

119TH

STREET

WEST

RESERVE "B"

RES "A"

CARR

CT.

CARR

CT.

MILSTEAD

DORA

ATCHISON, TOPEKA AND SANTA FE RAILROAD

APPROVED  
DRAINAGE PLAN

NOTE:  
1. All elevations shown on this plan are in feet above mean sea level unless otherwise indicated.

NOTE:  
2. All spot elevations shown on this plan are for the top of work (finished grade) unless otherwise indicated.

NOTE:  
3. Contour elevations shown on this plan are for the top of work (finished grade) unless otherwise indicated. Spot elevations shall take precedence over contour lines.

SEE SHEET TWO

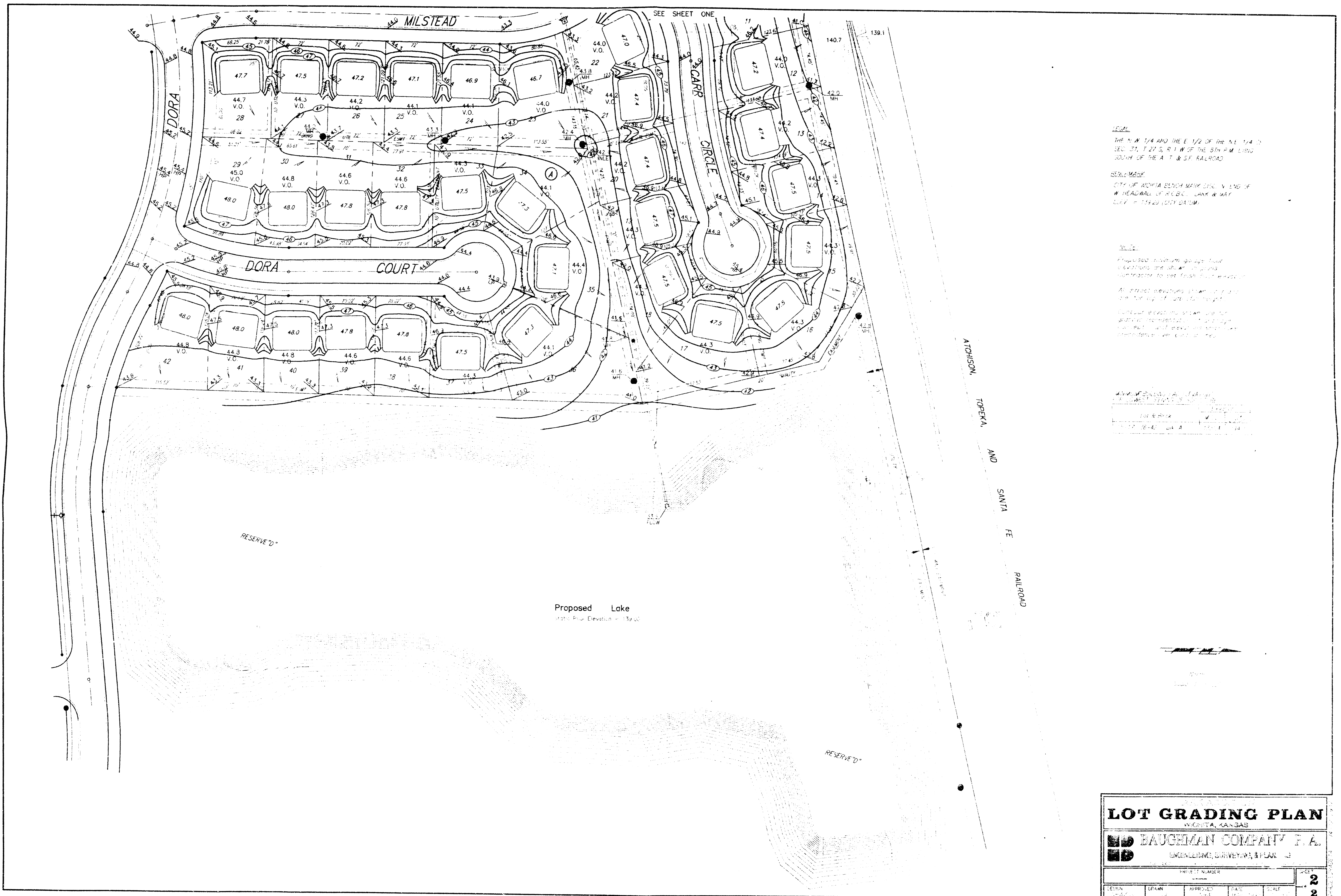
SEE SHEET TWO

LARK ADDN ON  
**LOT GRADING PLAN**  
WICHITA, KANSAS

**BAUGHMAN COMPANY P.A.**  
ENGINEERING, SURVEYING, & PLANNING

DESIGN	DRAWN	APPROVED	DATE	SCALE	SHEET
NBA/LA	JL	UPH	MAY 1995	1"=50'	1
					2

LARK ADDN.  
ON Plat CARD 16 MAY 1995



THE N.W. 1/4 AND THE E. 1/2 OF THE N.E. 1/4 OF  
 SEC. 31, T. 27 S., R. 1 W. OF THE 8TH P.M. LING  
 SOUTH OF THE A. T. & S.F. RAILROAD

CITY OF WICHITA BENCH MARK DISC. V. END OF  
 W. HEADWALL OF A.T. & S.F. RAILROAD  
 C.S.P. = 1122.0 CITY DATUM

PROPOSED minimum grade for  
 excavations and for  
 contractors to set finish floor elevations  
 All street elevations shown are for  
 the top of the curb or gutter  
 Contour marks are shown for  
 water to be retained in the  
 proposed lake. All elevations are  
 in feet above city datum.

DATE	BY
1924	J. A. BAUGHMAN

Proposed Lake  
 Note: Elev. Elevation = 139.0

<b>LOT GRADING PLAN</b>				
IN WICHITA, KANSAS				
J. A. BAUGHMAN COMPANY P. A.				
ENGINEERING, SURVEYING, & PLANNING				
PROJECT NUMBER				
DATE	BY	APPROVED	DATE	SCALE
				2
				2