

- BENCHMARKS:**
- BM #1** "□" On Top of Curb Located on the East Side of Shefford 12.5' South of the North Line of Pawnee Mesa Addition. Elevation = 143.56 (City Datum)
 - BM #2** R.R. Spike in East Side of P.P. Located 112.5' North of the North 67'W of Dora and 41.5' East of the C. of 119th Street West. Elevation = 145.26 (City Datum)
 - BM #3** City of Wichita Benchmark Disc. North end of West Headwall of R.C.B.C., Lark and Max. Elevation = 139.20 (City Datum)

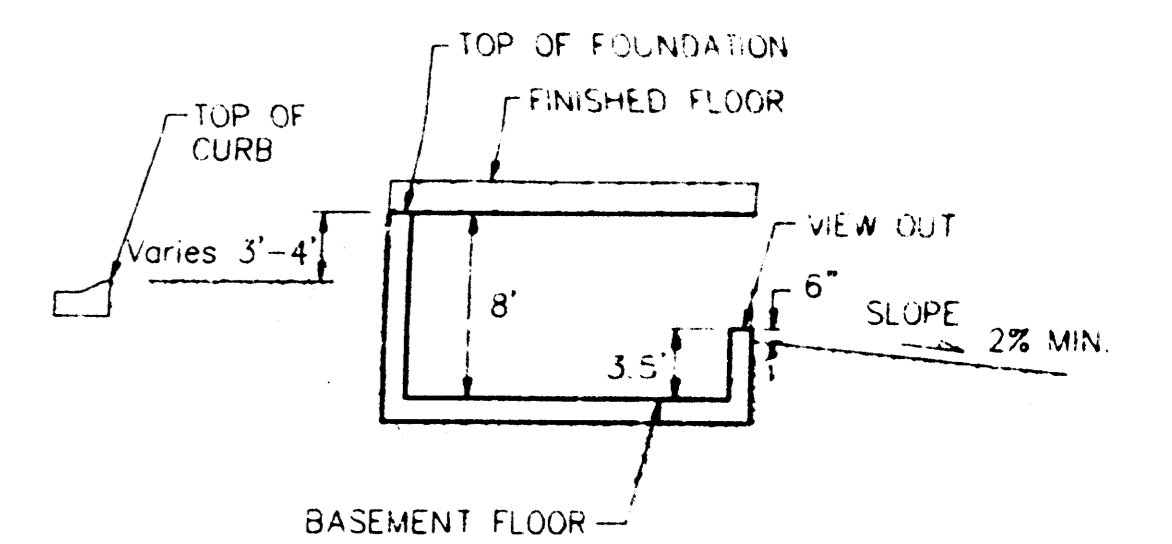
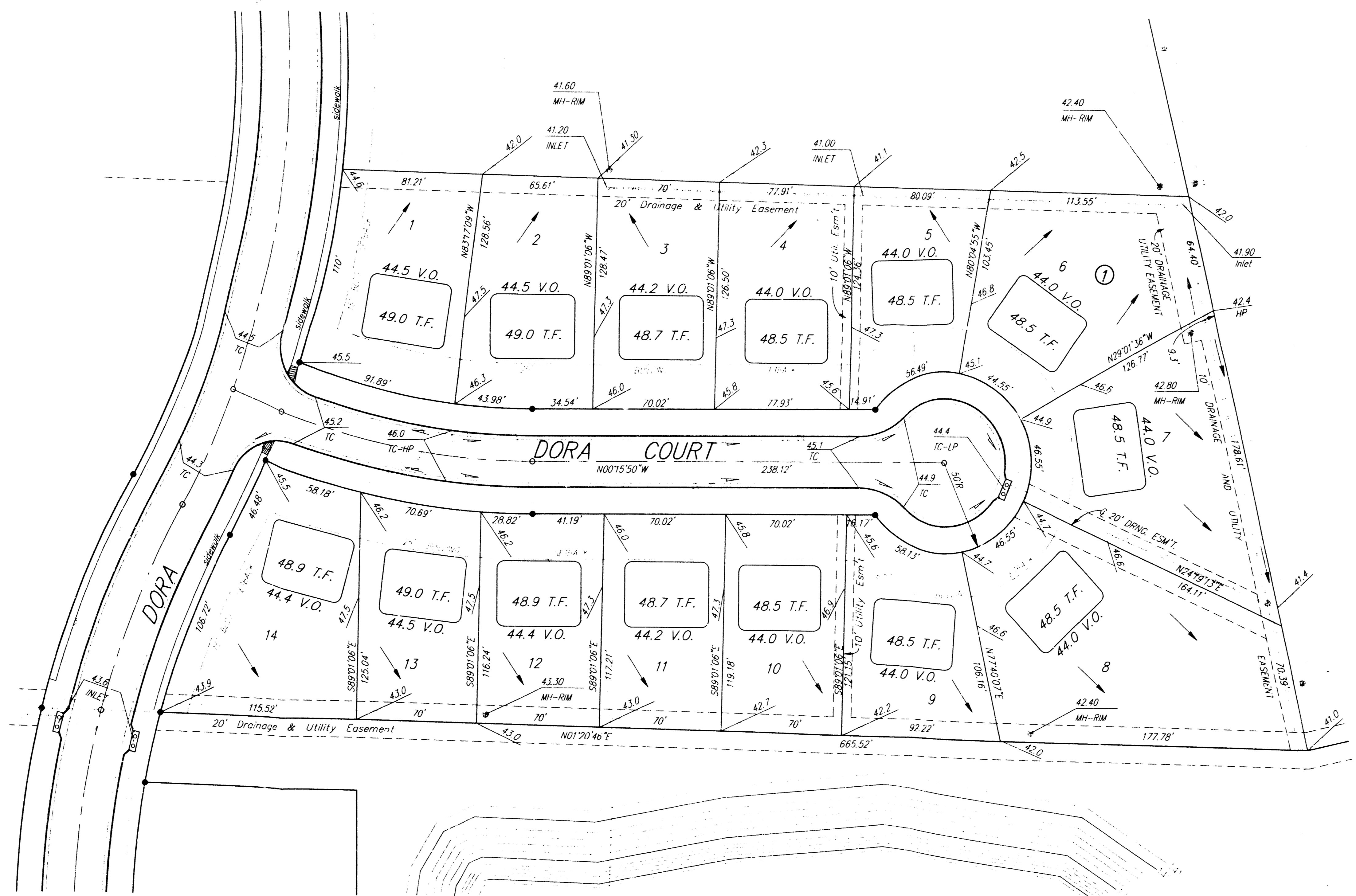


Scale: 1" = 40'

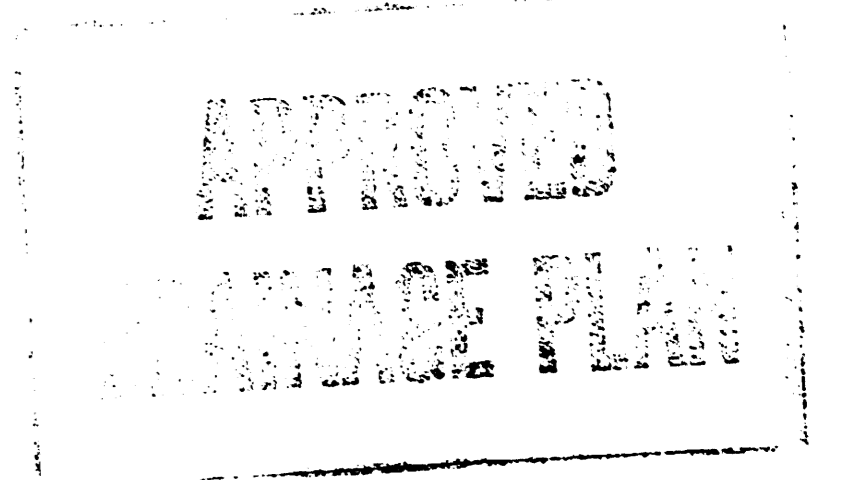
• = Iron

NOTE:
 Proposed top of foundation elevations are shown on plans. Contractor to set finish floor elevation.
 All street elevations shown on plans are for top of curb (full height).
 View-out elevations are denoted as XXX V.O.
 Walk-out elevations are denoted as XXX W.O.

LOT	BLOCK	ELEVATION	
		CITY DATUM	M.S.L.
8-14	1	144.0	132.4



TYPICAL VIEW OUT
NO SCALE



LARK 4th

Revised 4-97 JL/BP
 Revised 3-97 NBW

LEARNER ADDITION
LOT GRADING PLAN
 DORA COURT

BAUGHMAN COMPANY P.A.
 ENGINEERING, SURVEYING, & PLANNING

PROJECT NUMBER: _____ SHEET 1 OF 1

DESIGN: HP	DRAWN: TMC	APPROVED: [Signature]	DATE: APR 1997	SCALE: 1" = 40'
------------	------------	-----------------------	----------------	-----------------

PLATT ROAD MARKED