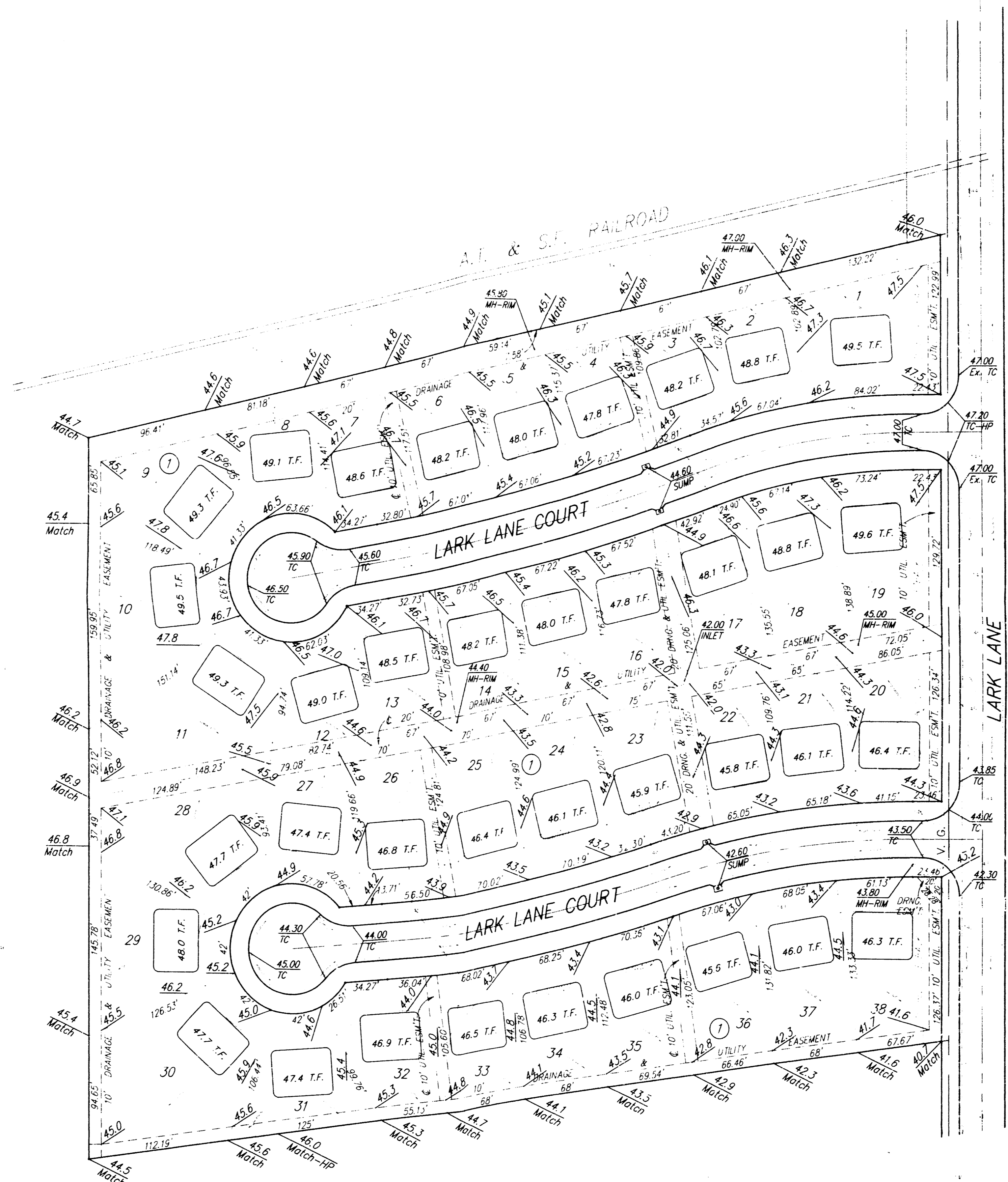


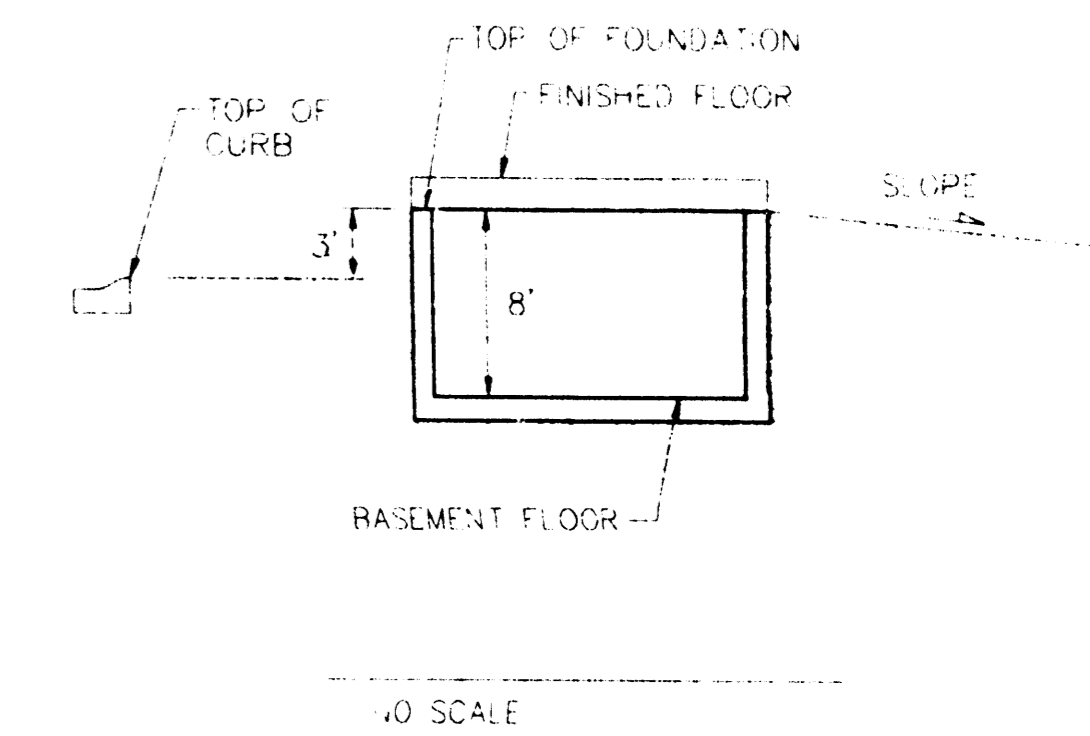
**BENCHMARKS:**  
 BM #1 City of Wichita Bench Mark Disc, N.  
 End W. Headwall of R.C.B.C., Lark  
 & Moy.  
 Elev. = 139.20 (City Datum)  
 BM #2 "□" Top of Curb Located  
 on the East Side of Shefford  
 12.5' South of the North Line  
 of Pawnee Mesa Addition  
 Elev. = 143.56 (City Datum)

KELLOGG (US-54)

Scale: 1" = 60'  
 = Iron



**NOTE:**  
 Proposed top of foundation elevations  
 are shown on plans.  
 Contractor to set finish floor elevation.  
 All street elevations shown on plans  
 are for top of curb (for height).



**APPROVED  
 DRAINAGE PLAN**

**LARK 5<sup>TH</sup>**

**GRADING PLAN**

**BAUGHMAN COMPANY P. A.**  
 CIVIL ENGINEERS, ARCHITECTS, & LANDSCAPE ARCHITECTS

PROJECT NUMBER					SHEET <b>1</b> OF <b>1</b>
DESIGN	DRAWN	APPROVED	DATE	SCALE	