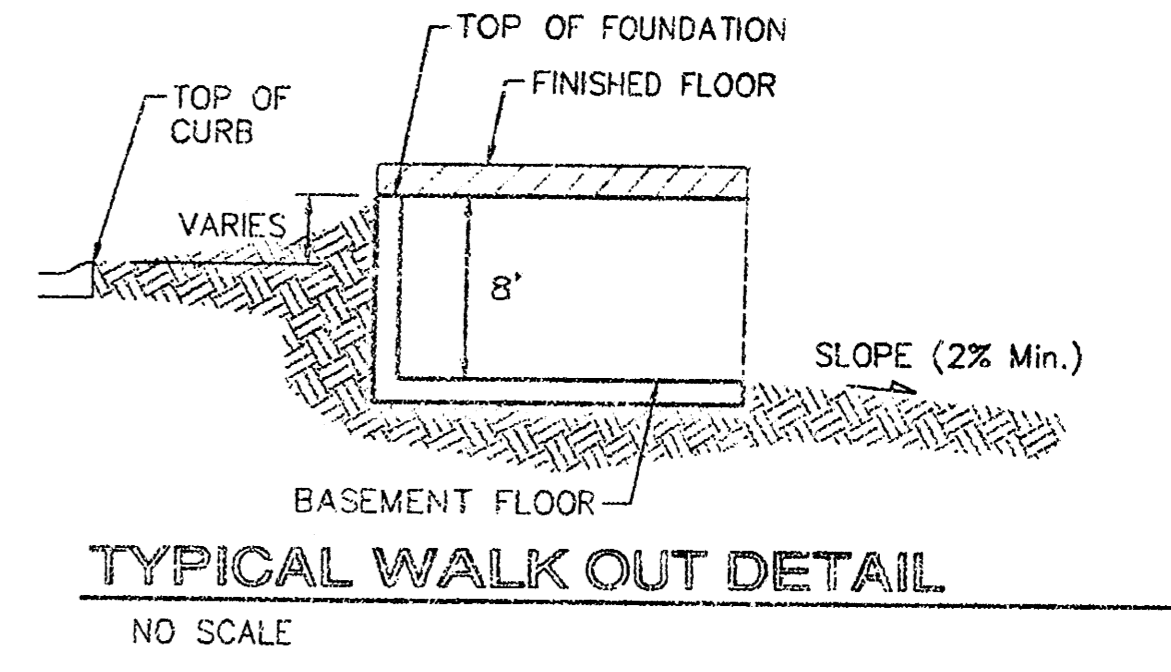
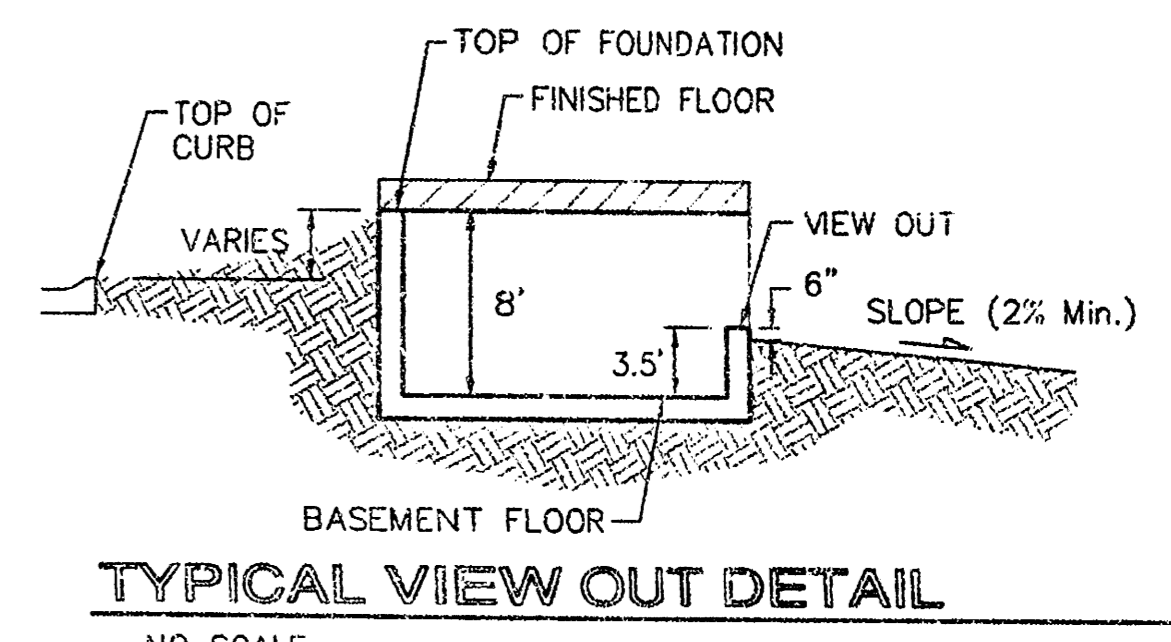
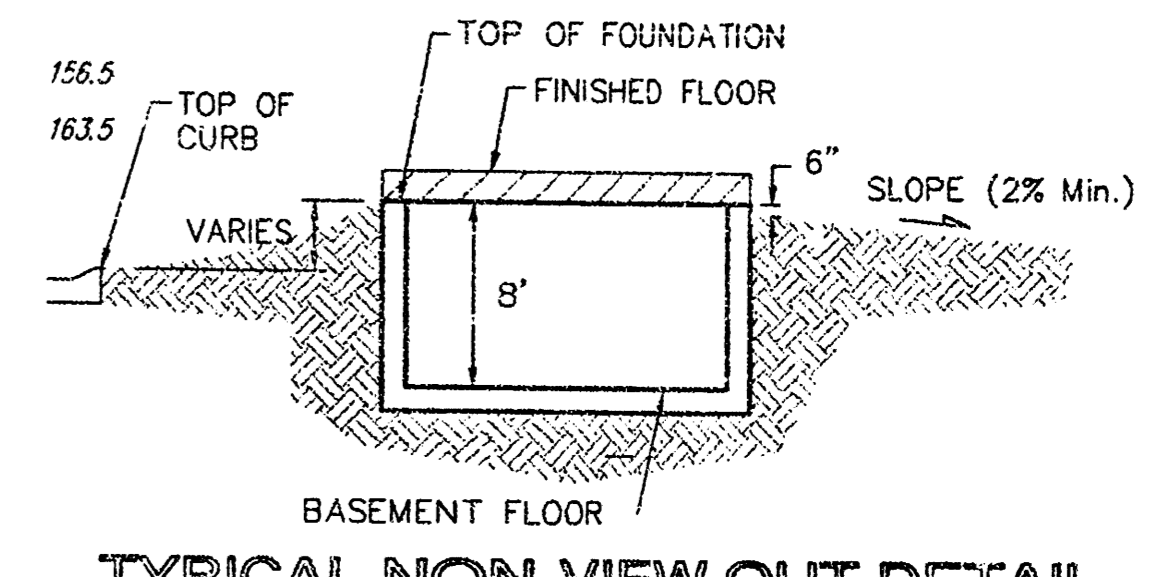
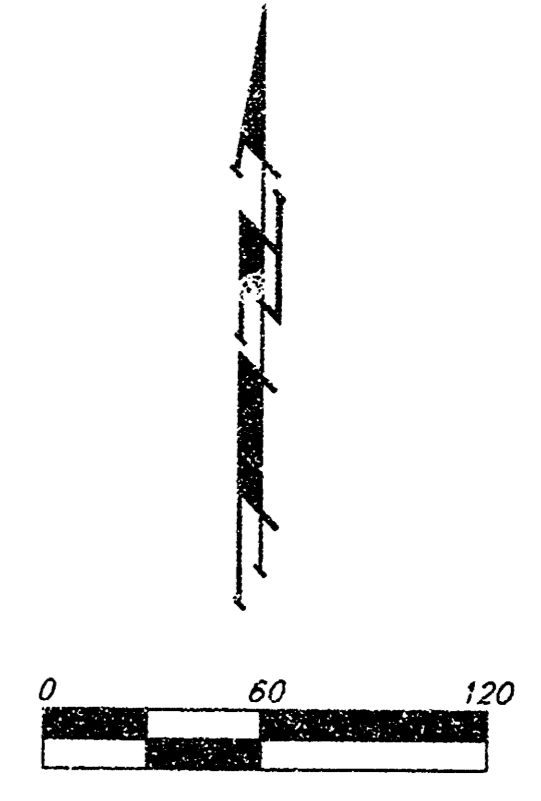


BENCHMARK:
County 500' nail in H.L.P. 800' west & 31' north of the NE cor. NW 1/4, Sec. 21, Twp. 27-S, R. 2-W of the 6th P.M. Elev = 162.88 City Datum 4350.09 A.S.V.O.29

MINIMUM BUILDING PAD ELEVATIONS FOR LOWEST OPENING TO THE STRUCTURES		
LOT	BLOCK	ELEVATION CITY DATUM
1-19	B	
6-22, 33-36	D	



NOTES:
Proposed Top of Foundation Elevations Are Shown On Plans. Contractor to Set Finished Floor Elevations.
All Street Elevations Shown on Plans are for Top of Curb (Full-Height).
This Grading Plan is Designed with View-Outs. Elevations Shown at Rear of House (XX.X V.O.).
Lot dimensions have been omitted on this plan, refer to the recorded plat for this information.

APPROVED DRAINAGE PLAN

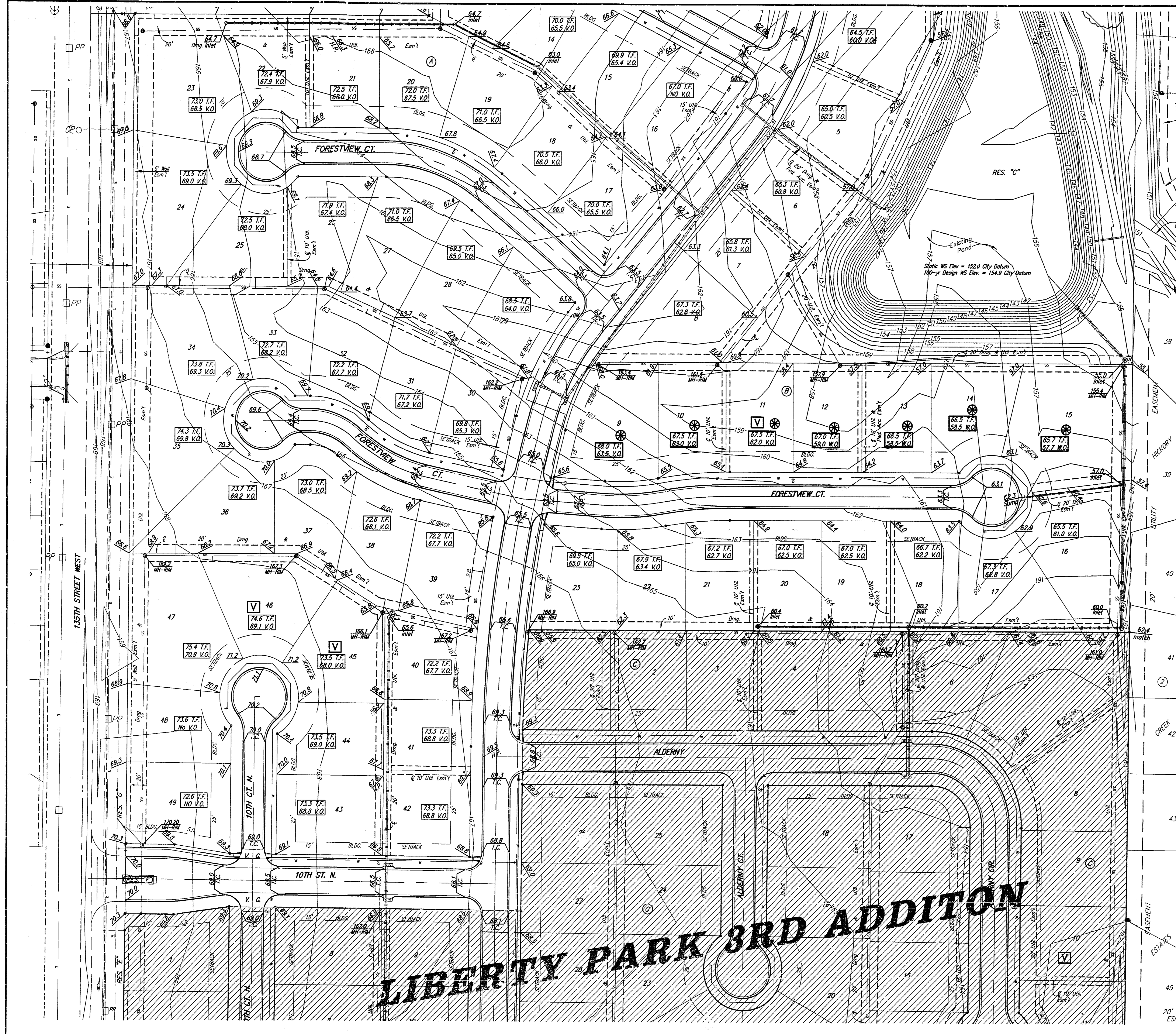
25 June 03 revised house elev by SMD per NBW
Blk A: Lots 2, 17-21, 28, 34, 38-39
Blk B: Lots 5-9

LIBERTY PARK 2nd ADDITION GRADING PLAN
WICHITA, KANSAS

BAUGHMAN COMPANY P.A.
ENGINEERING, SURVEYING, & PLANNING
318-262-7371 • 315 ELLIS • WICHITA, KANSAS 67211

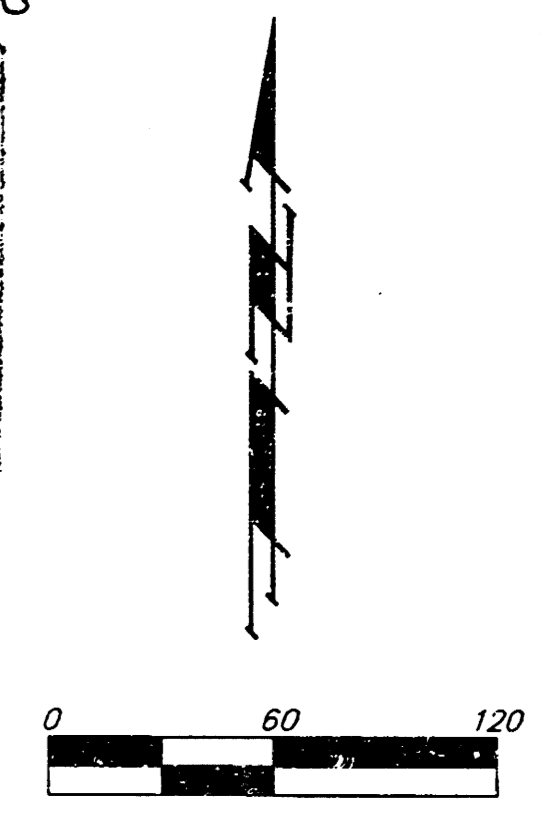
DESIGN	DRAWN	APPROVED	DATE	SCALE
BLG	BLG		03/24/03	NOTED

PRC. CT NUMBER: _____ SHEET **1** OF **3**



submitted 11/14/06

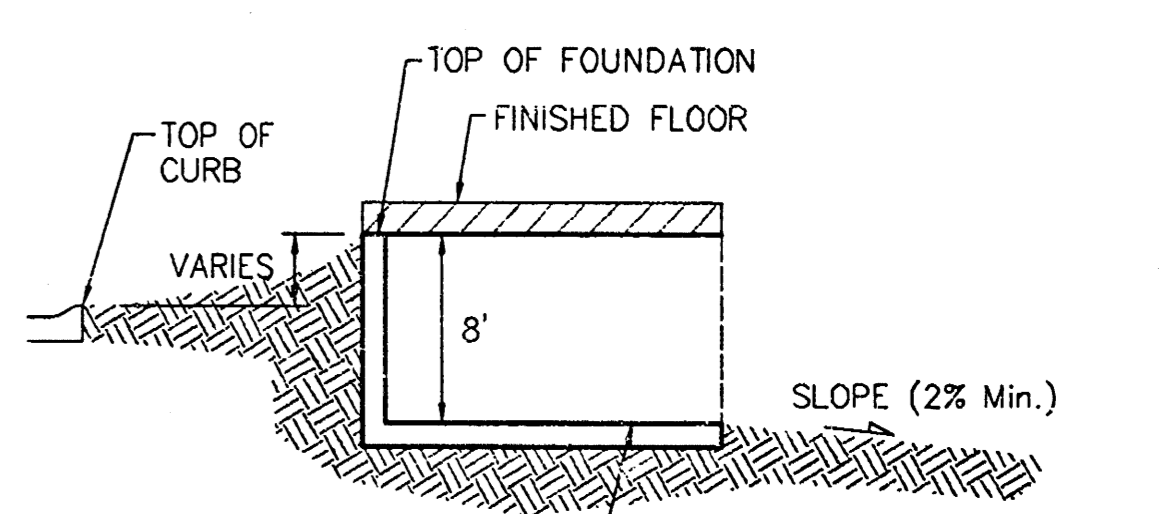
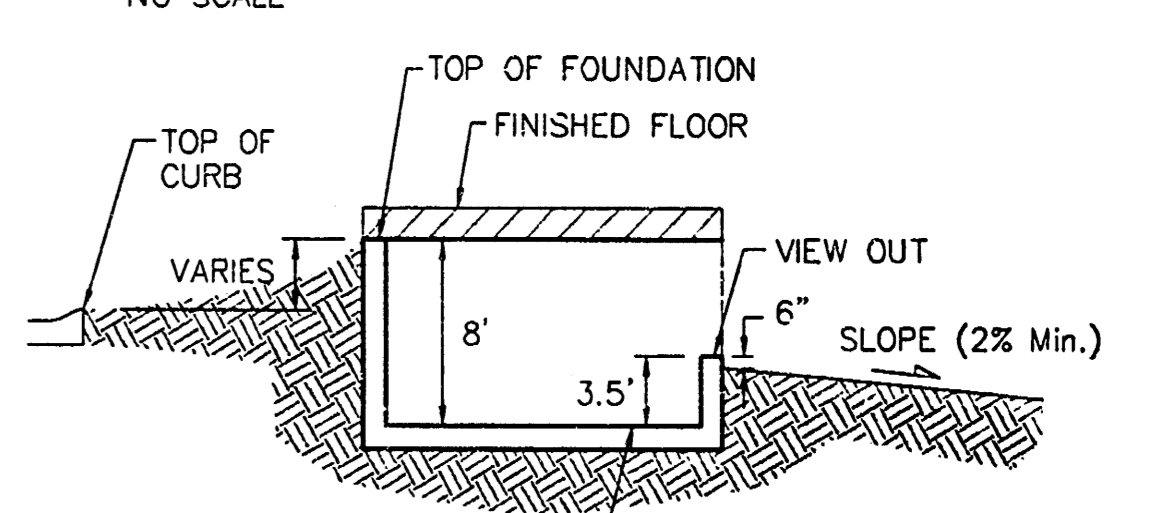
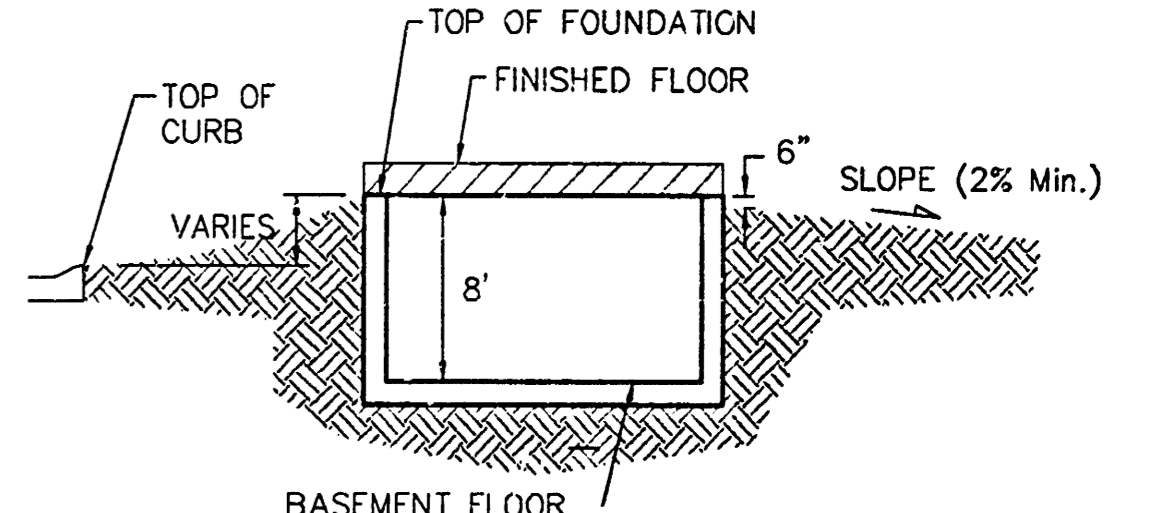
APPROVED DRAINAGE PLAN



BENCHMARK:
County 604 nail in H.L.P. 800' west & 31' north of the NE cor., NW 1/4, Sec. 13, Twp. 27-S, R-2-W of the 6th P.M.
Elev. = 162.83 City Datum
1350.08 N.G.V.D. 29

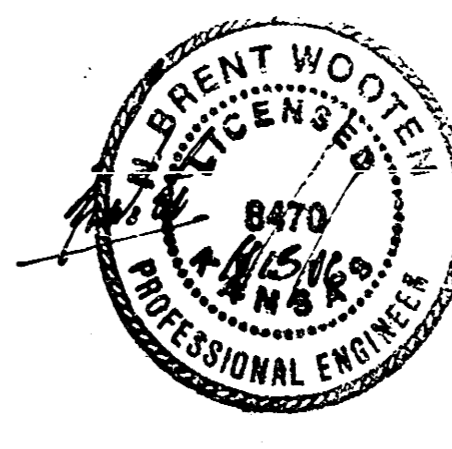
MINIMUM BUILDING PAD ELEVATIONS FOR LOWEST OPENING TO THE STRUCTURES

LOT	BLOCK	ELEVATION CITY DATUM
1-19	B	156.5
6-22, 33-36	D	163.5



NOTES:
Proposed Top of Foundation Elevations Are Shown On Plans. Contractor to Set Finished Floor Elevations.
All Street Elevations Shown on Plans Are for Top of Curb (Full-Height).
This Grading Plan is Designed with View-Outs. Elevations Shown at Rear of House (XX' V.O.)
Lot dimensions have been omitted on this plan, refer to the recorded plat for this information.
⊗ Indicates extra deep foundation may be required

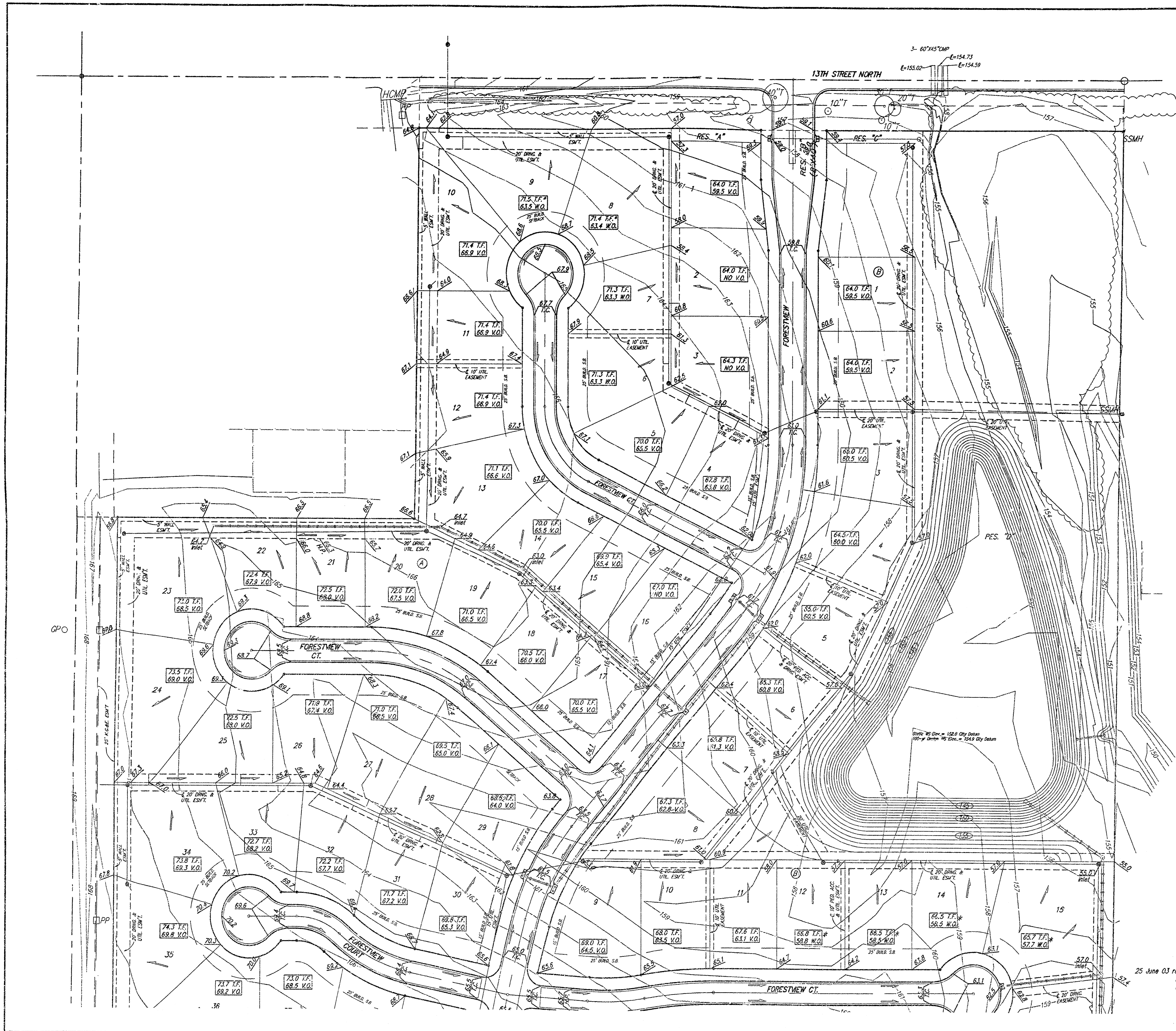
LIBERTY PARK 3RD ADDITION



**Liberty Park 2nd Addition
Grading Plan**
Baughman Wichita, Kansas

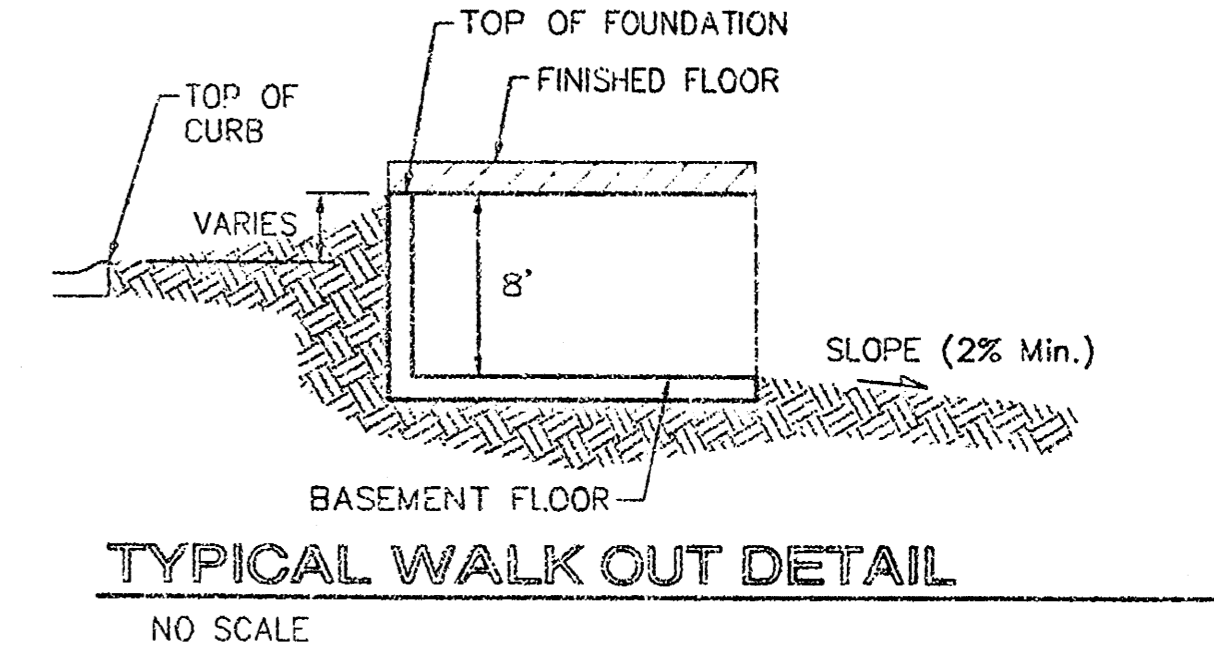
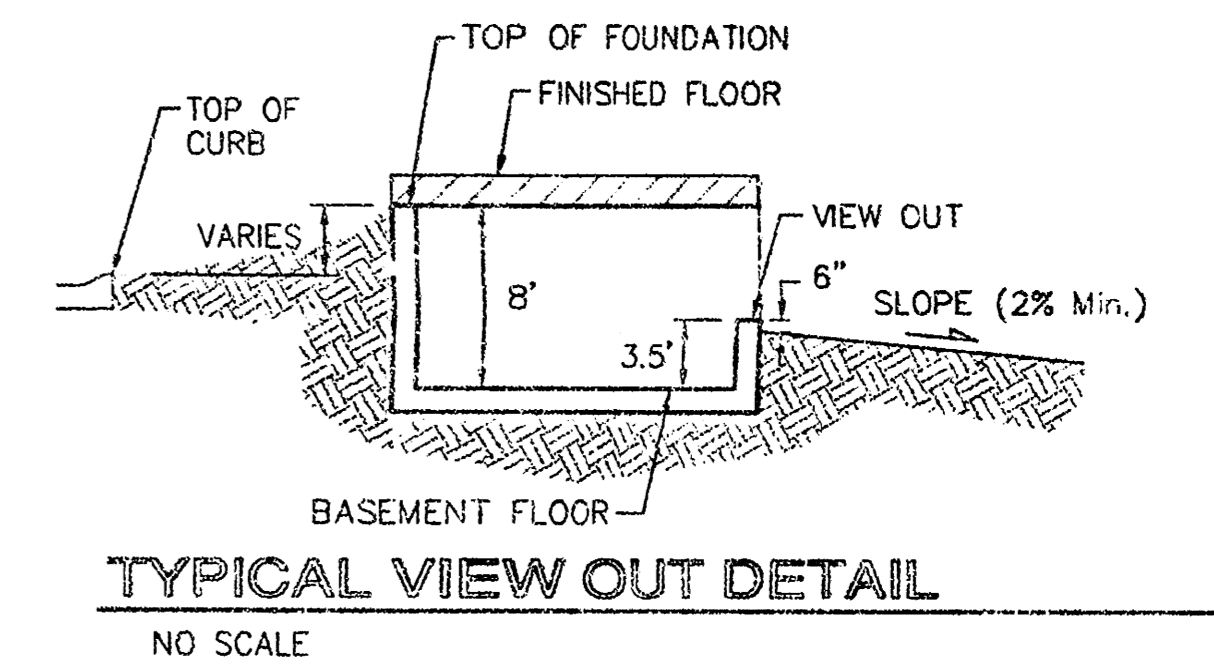
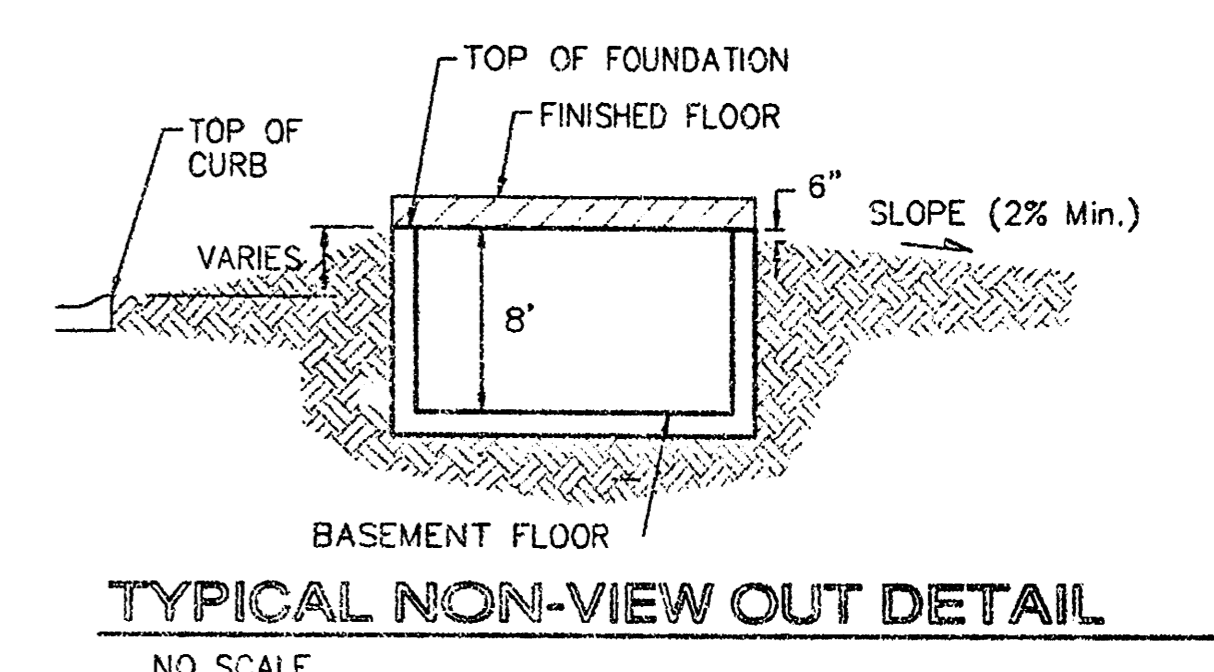
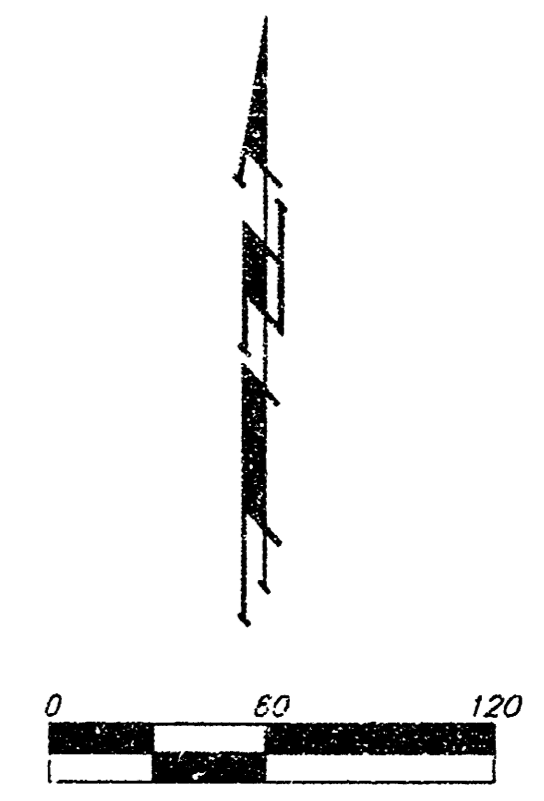
Baughman Company, P.A. 315 Ellis St. Wichita, KS 67211 F 316-262-1271 F 316-262-0149
ENGINEERING, SURVEYING, PLANNING, LANDSCAPE ARCHITECTURE

PROJECT NUMBER	DESIGN	DRAWN
	BLG	BLG
REVISIONS:	APPROVED	DATE
6/25/03	SMD/NBW	03/24/03
11/15/06	JAK	
SCALE		SHEET
1" = 60'		2 OF 3



BENCHMARK:
 County 800 nail in N.L.R. 800' west &
 31' north of the NE cor. NW 1/4, Sec.
 13, Twp. 27-S, R-2-W of the 6th
 P.M.
 Elev = 162.88 City Datum
 1350.08 N.G. V.O. 29

MINIMUM BUILDING PAD ELEVATIONS FOR LOWEST OPENING TO THE STRUCTURES		ELEVATION
LOT	BLOCK	CITY DATUM
1-19	B	156.5
6-22, 33-36	D	163.5



NOTES:
 Proposed Top of Foundation Elevations Are Shown On
 Plans. Contractor to Set Finished Floor Elevations.
 All Street Elevations Shown on Plans Are for Top of
 Curb (Full-Haught).
 This Grading Plan is Designed with View-Outs.
 Elevations Shown at Rear of House (XX.X V.O.)
 Lot dimensions have been omitted on this plan,
 refer to the recorded plot for this information.

LIBERTY PARK 2nd ADDITION
GRADING PLAN
 WICHITA, KANSAS

BAUGHMAN COMPANY P.A.
 ENGINEERING, SURVEYING, & PLANNING
 316-262-7271 • 315 ELLIS • WICHITA, KANSAS 67211

PROJECT NUMBER _____ SHEET **3**
 OF **3**

DESIGN	DRAWN	APPROVED	DATE	SCALE
BLG	BLG/SMD		06/25/03	NOTED

25 June 03 revised house elev by SMD per NBW
 Blk A: lots 2, 17-21, 29, 34, 38-39
 Blk B: lots 5-9