

Scale: 1" = 60'

Benchmarks

BM #1: C.O.W. benchmark disk, 56' E and 55' N of CL 135th St. W. & 13th St. N. Elev. = 167.83 (City Datum)

BM #2: C.O.W. benchmark disk, 1/2 mile south of 13th St. 39' east of CL 135th St. 18' south of hedge east. Elev. = 159.71 (City Datum)

NOTES:
Proposed Top of Foundation Elevations Are Shown On Plans. Contractor to Set Finished Floor Elevations.

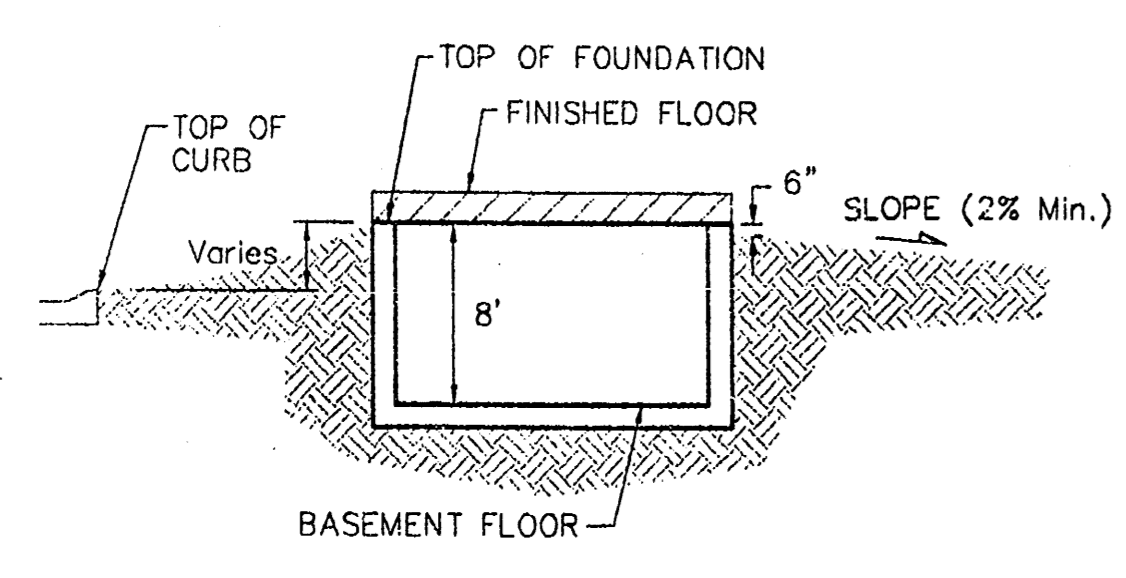
All Street Elevations Shown on Plans Are for Top of Curb (Full-Height).

This Grading Plan is Designed with Walk-out & View-Out Basements. Elevations Shown as (X.X X V.O. or X.X X W.O.)

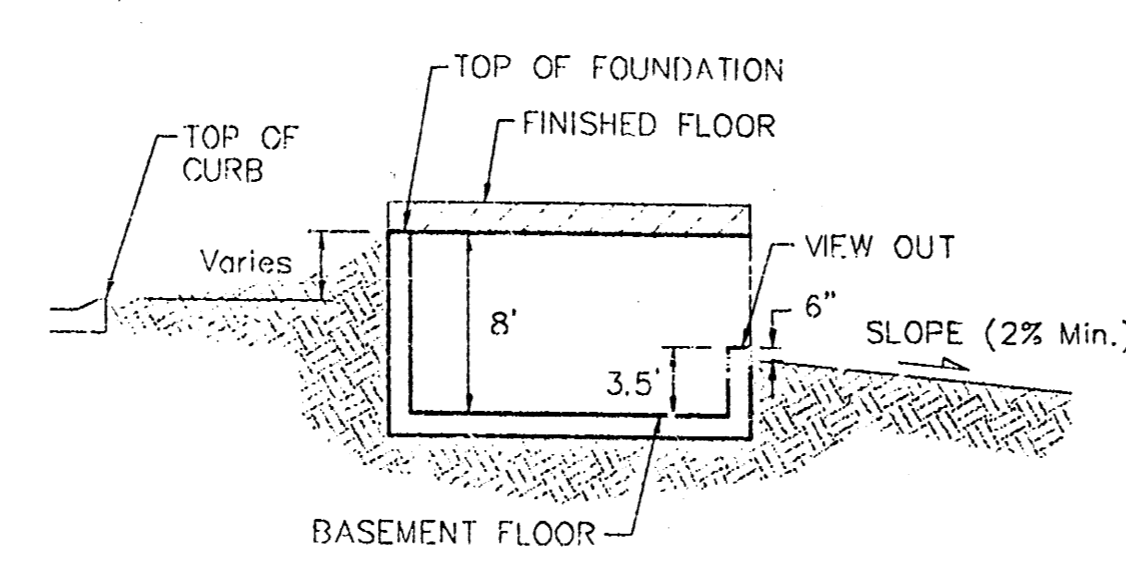
Lot dimensions have been omitted from this plan, refer to the recorded plat for this information.

Ⓜ Indicates Non-Typical View-Out (Use 5.5' From T.F. to V.O.)

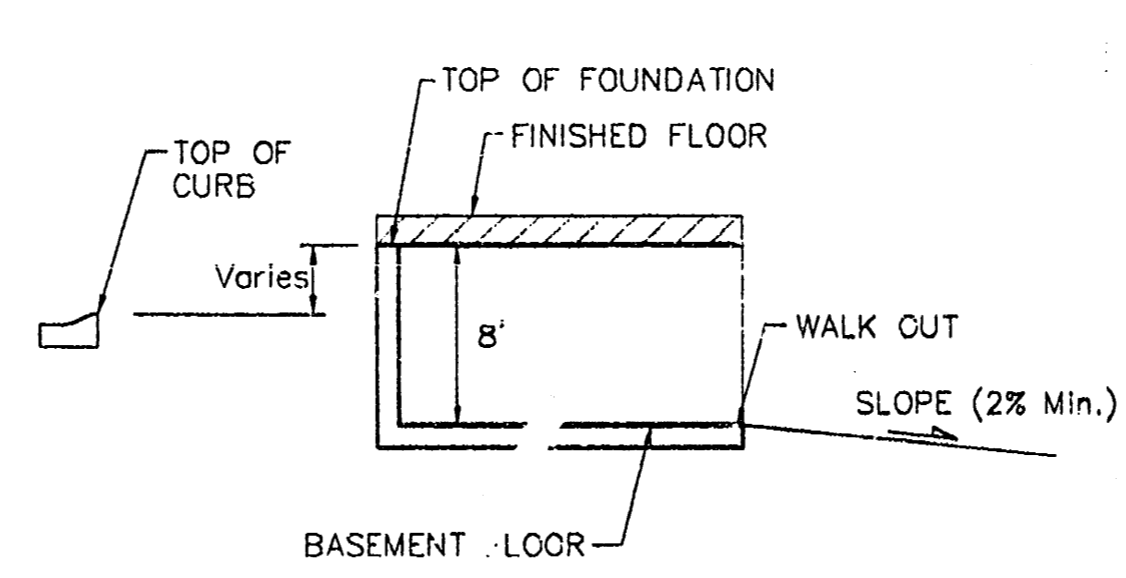
**APPROVED
DRAINAGE PLAN**



TYPICAL NON-VIEW OUT DETAIL
NO SCALE

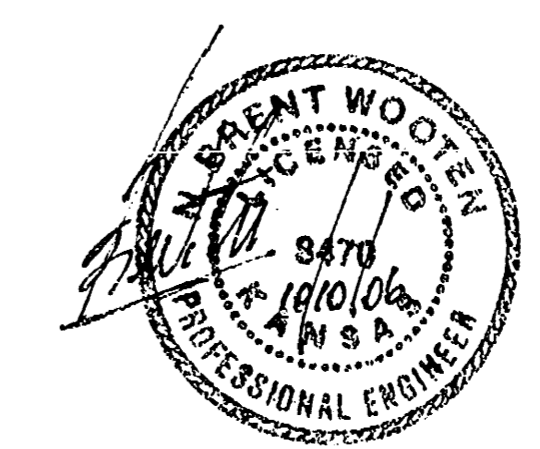


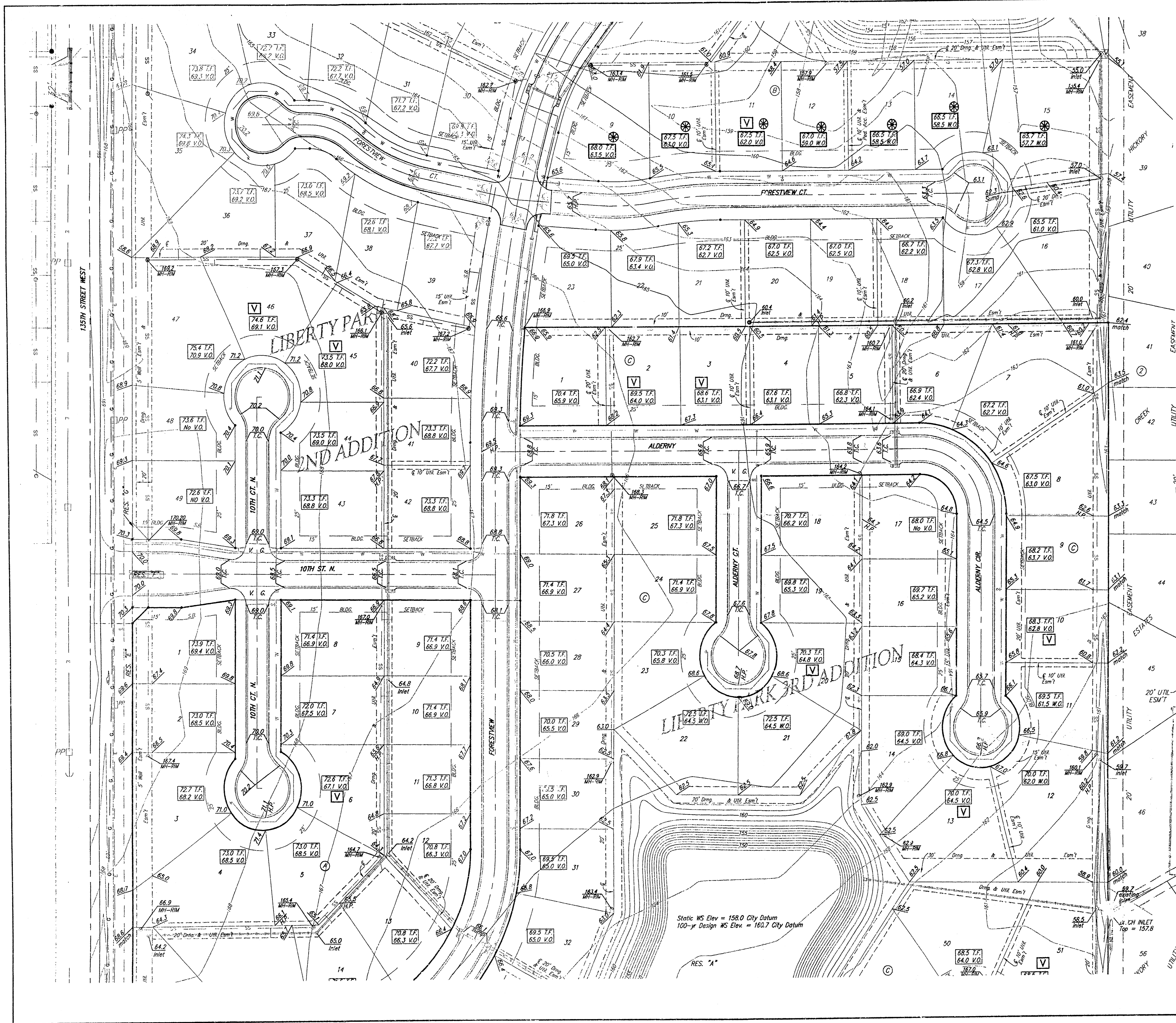
TYPICAL VIEW OUT DETAIL
NO SCALE



TYPICAL WALK OUT DETAIL
NO SCALE

		Liberty Park 3rd Addition Grading Plan	
<small>Baughman Company, P.A. 315 Elm St. Wichita, KS 67211 P 316-262-0100 F 316-262-0109 ENGINEERING SURVEYING PLANNING LANDSCAPE ARCHITECTURE</small>			
PROJECT NUMBER	DESIGN	DRAWN	
7/31/06	RLG/JAK	RLG/JAK	
Phase 1 Street Grading	JAK	DATE	11/04/05
		SCALE	1" = 60'
		SHEET	1 OF 2





Benchmarks

BM #1: C.O.W. benchmark disk.
56' E and 55' N of CL 135th St.
St. W. & 13th St. N.
Elev. = 167.83 (City Datum)

BM #2: C.O.W. benchmark disk.
1/2 mile south of 13th St.
39' east of CL 135th St. 18'
south of hedge east.
Elev. = 159.71 (City Datum)

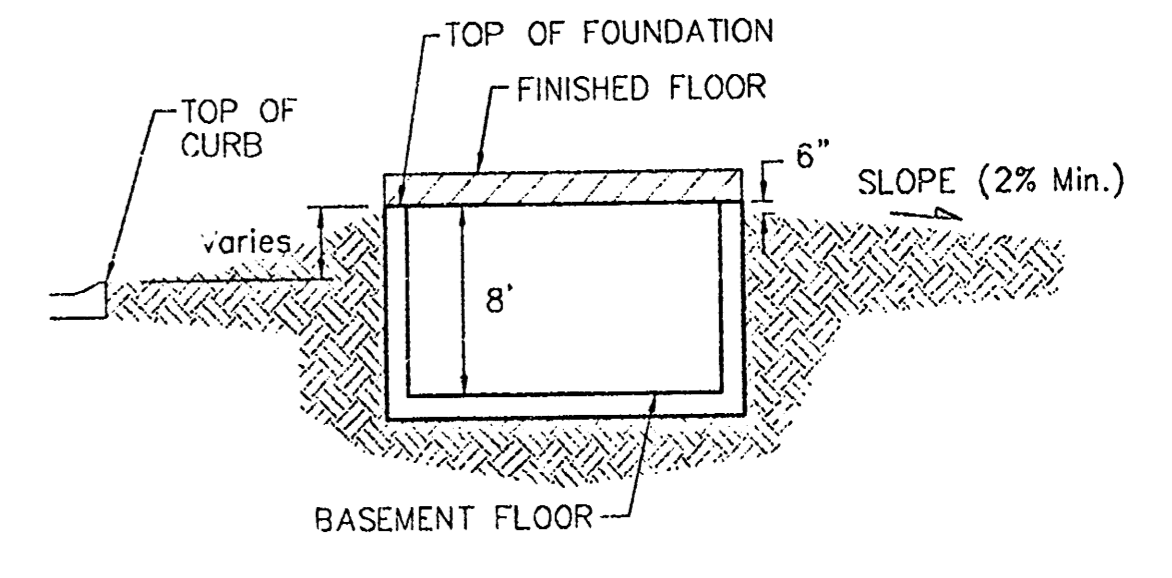
Scale: 1" = 60'

NOTES:
Proposed Top of Foundation Elevations Are
Shown On Plans. Contractor to Set Finished
Floor Elevations.

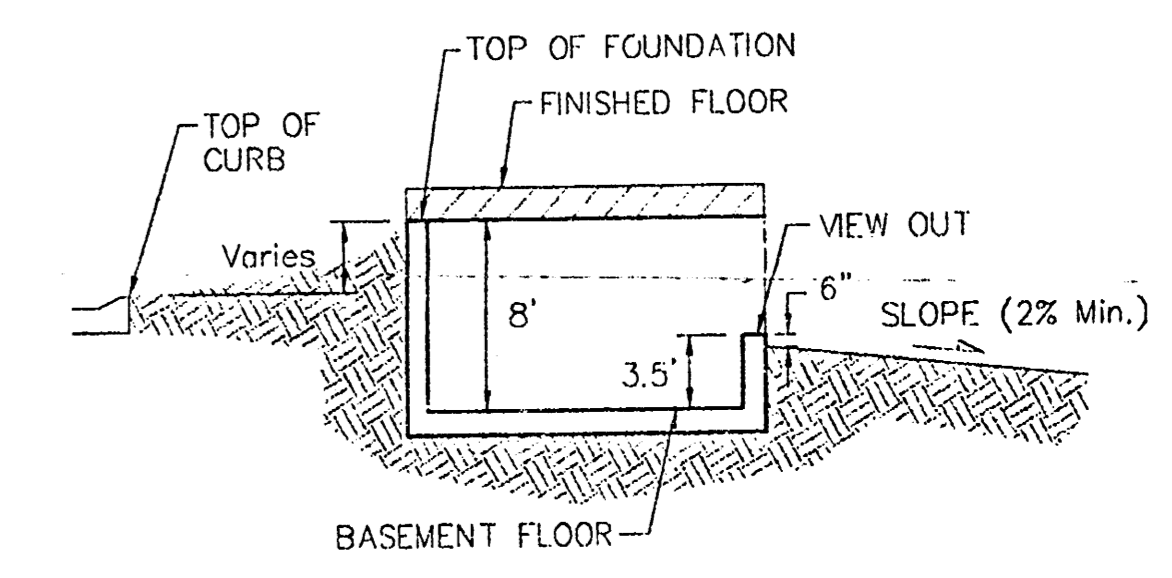
All Street Elevations Shown on Plans Are for
Top of Curb (Full-Height).

This Grading Plan is Designed with Walk-out &
View-Out Basements. Elevations Shown as
(XX.X V.O. or XX.X V.O.)

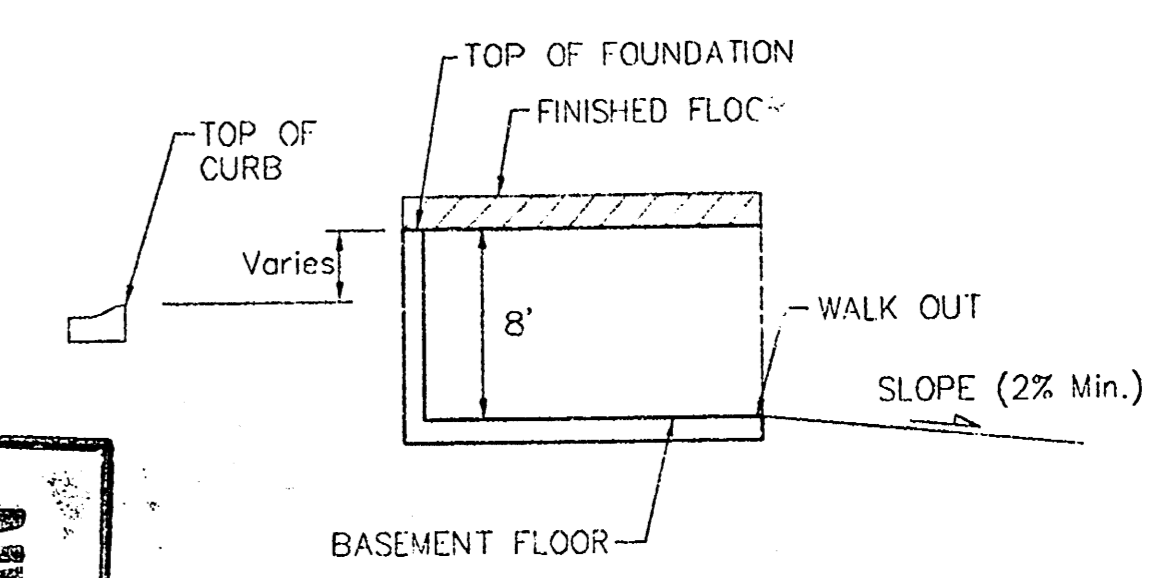
Lot dimensions have been omitted on this
plan, refer to the recorded plat for this
information.



TYPICAL NON-VIEW OUT DETAIL
NO SCALE



TYPICAL VIEW OUT DETAIL
NO SCALE

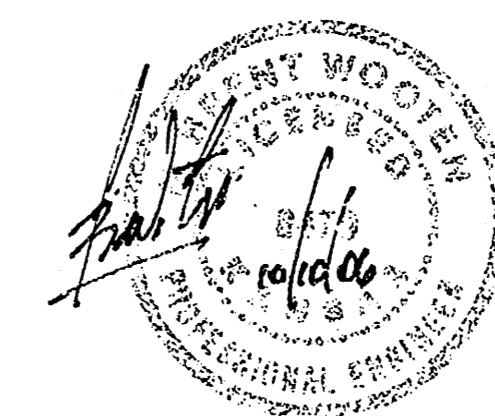


TYPICAL WALK OUT DETAIL
NO SCALE

Lots shown with "⊗" symbol indicates that
extra deep foundations may be required.

Ⓜ Indicates Non-Typical View-Out
(Use 5.5' From T.F. to V.O.)

Baughman		Liberty Park 3rd Addition Grading Plan	
Baughman Company, P.A. 11130 N. Wabash, KS 67111 P 316-252-1721 F 316-252-0149 ENGINEERING SURVEYING PLANNING LANDSCAPE ARCHITECTURE			
PROJECT NUMBER	DESIGN	DRAWN	
	BLG	JAK	
REVISIONS	DATE	APPROVED	DATE
7/31/06	JAK		11/04/05
Scale: 1" = 60'		SHEET	
		2 OF 2	



Static WS Elev = 158.0 City Datum
100-yr Design WS Elev. = 160.7 City Datum

RES. "A"