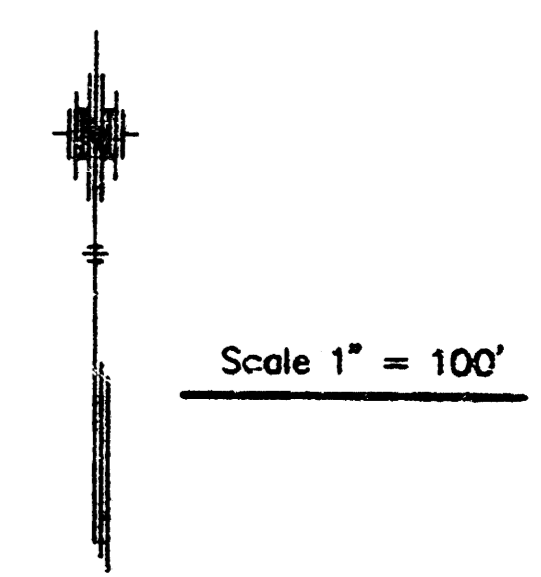
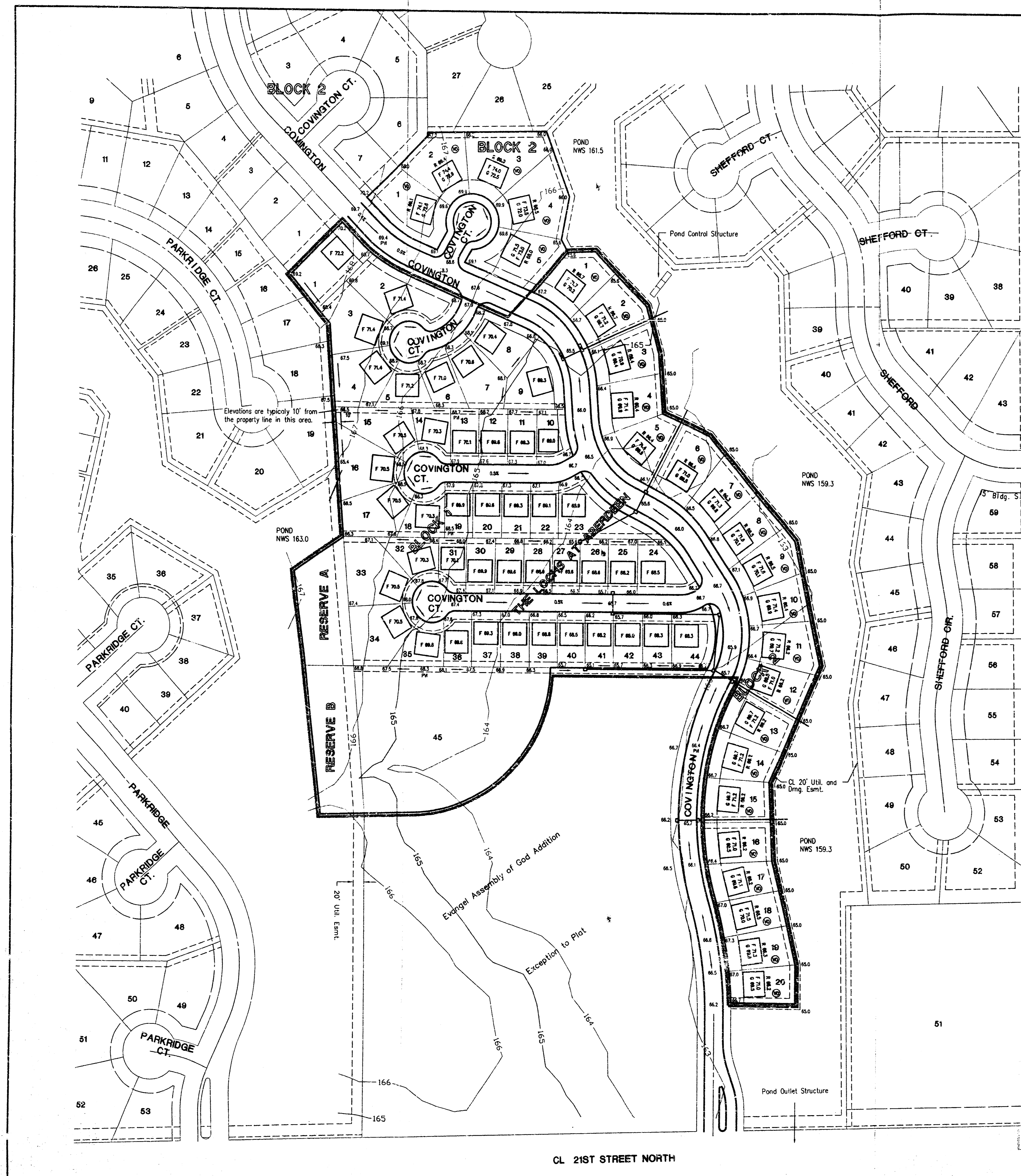


LOT GRADING PLAN

# THE LOCHS AT ABERDEEN

AN ADDITION TO WICHITA, SEDGWICK COUNTY, KANSAS  
DATE: JAN. 26, 2001



**NOTES**

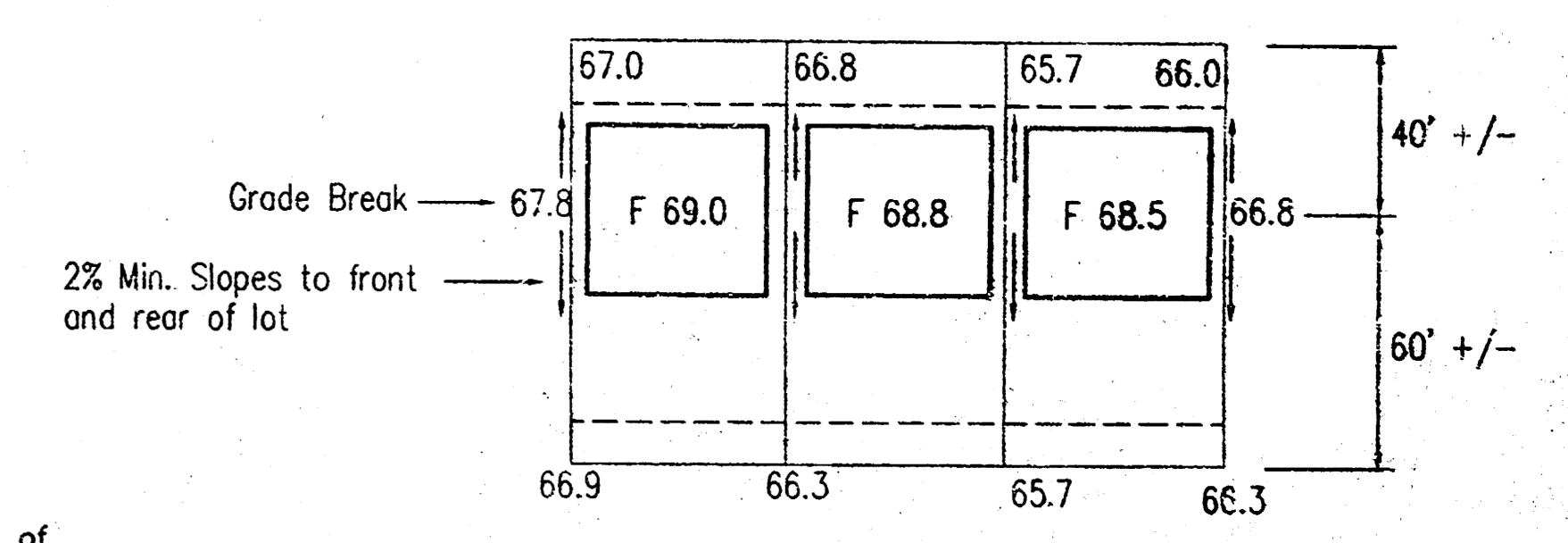
1. The Lochs at Aberdeen is a re-plot of Lots 1 through 35, Block 1 and Lots 6 through 23, Block 2 in Aberdeen 3rd Addition.
2. Lots 1 through 20, Block 2 adjoin Reserve B in Aberdeen 3rd Addition. Reserve B is reserved for ponds, drainage and recreation facilities.
3. Lot 45, Block 1 shall become part of the Evangel Assembly of God Addition as provided by a covenant which will be filed with this plat.
4. 24 lots in Block 1 have less than 6000 sq. ft. by a total of 13,684 sq. ft. This area is offset by the 42,088 sq. ft. provided in Reserves A and B.
5. Reserves A and B shall permit ponds, drainage, irrigation systems, walks, recreation facilities, parking and utilities confined to easements.
6. This Lot Grading Plan is subject to change after completion of the final street and utility plans.

**LEGEND**

- F - TOP OF FOUNDATION
- G - TOP OF GARAGE FLOOR
- R - TOP OF GROUND AT REAR WALL
- (V) - VIEW OUT BASEMENT

**BENCHMARKS**

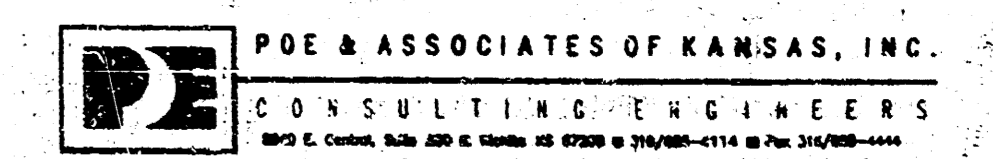
- (City of Wichita Datum)
1. City of Wichita Benchmark disc, 67' south of centerline 21st St. & 79' south of section line, and 46' east of centerline 119th St. Elev. 172.08
  2. 80d nail in power pole, 30' east and 50' south of Northwest Corner of Government Lot 6 in SW Quarter of Section 6, T27S, R1W. Elev. 172.08
  3. 80d nail in power pole 50' south of NE corner of Government Lot 3 in NW Quarter of Section 6, T27S, R1W. Elev. 179.98
  4. 80d nail in power pole 40' west and 40' north of the NW Corner of the NW Corner of Sec. 6, T27S, R1W. Elev. 175.05



**TYPICAL LOT GRADING**

(Lots 1-44, Block 1)

THE LOCHS  
@ ABERDEEN



G:\APPROVAL\655\aber-4th-jr-plan.dwg Fr1 Jan 26 14:16:03 2001 Kenny H111, Poe & Associates of Kansas

MICROFILM + CARD MARKED 12 APRIL 2001