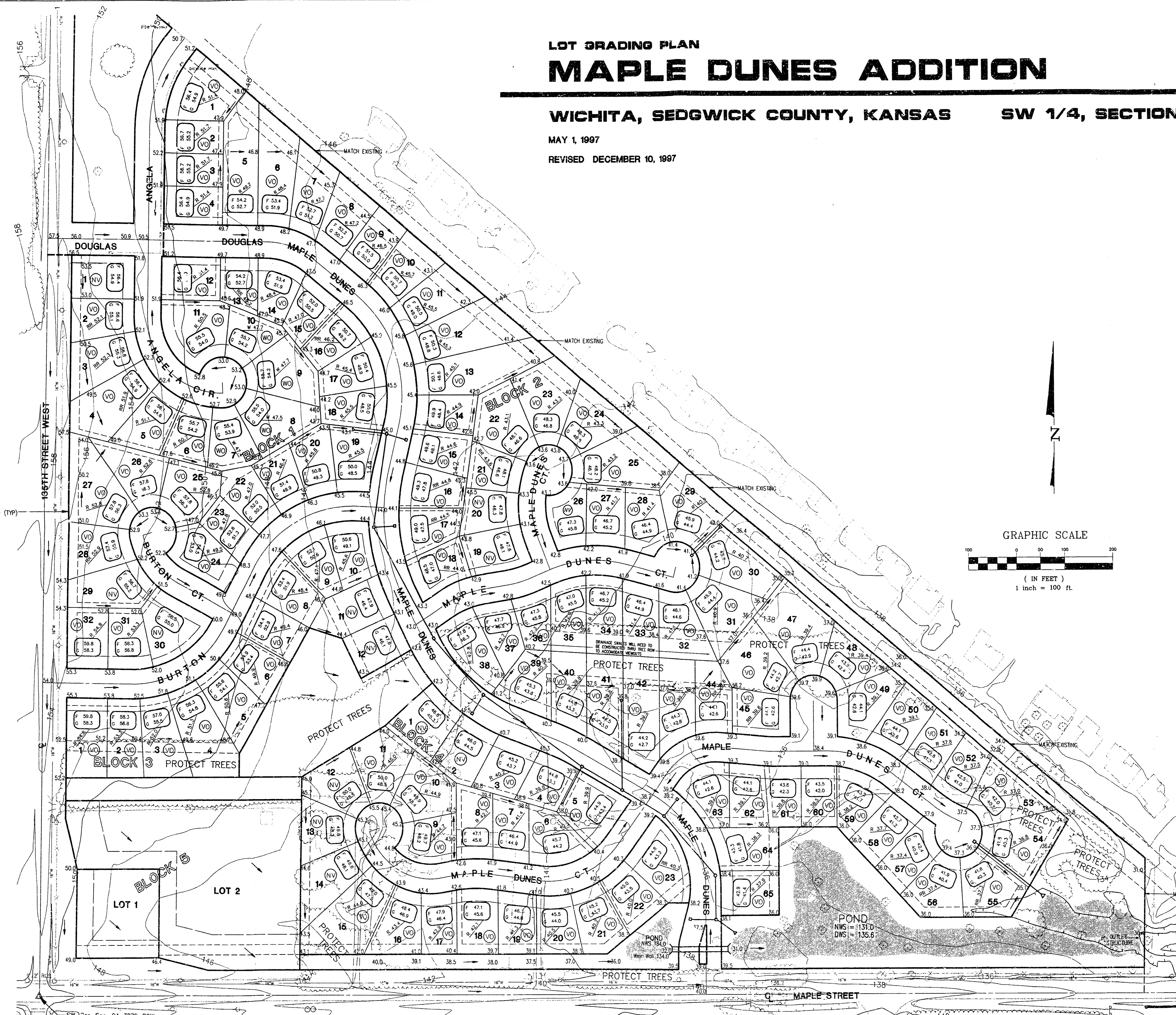


LOT GRADING PLAN MAPLE DUNES ADDITION

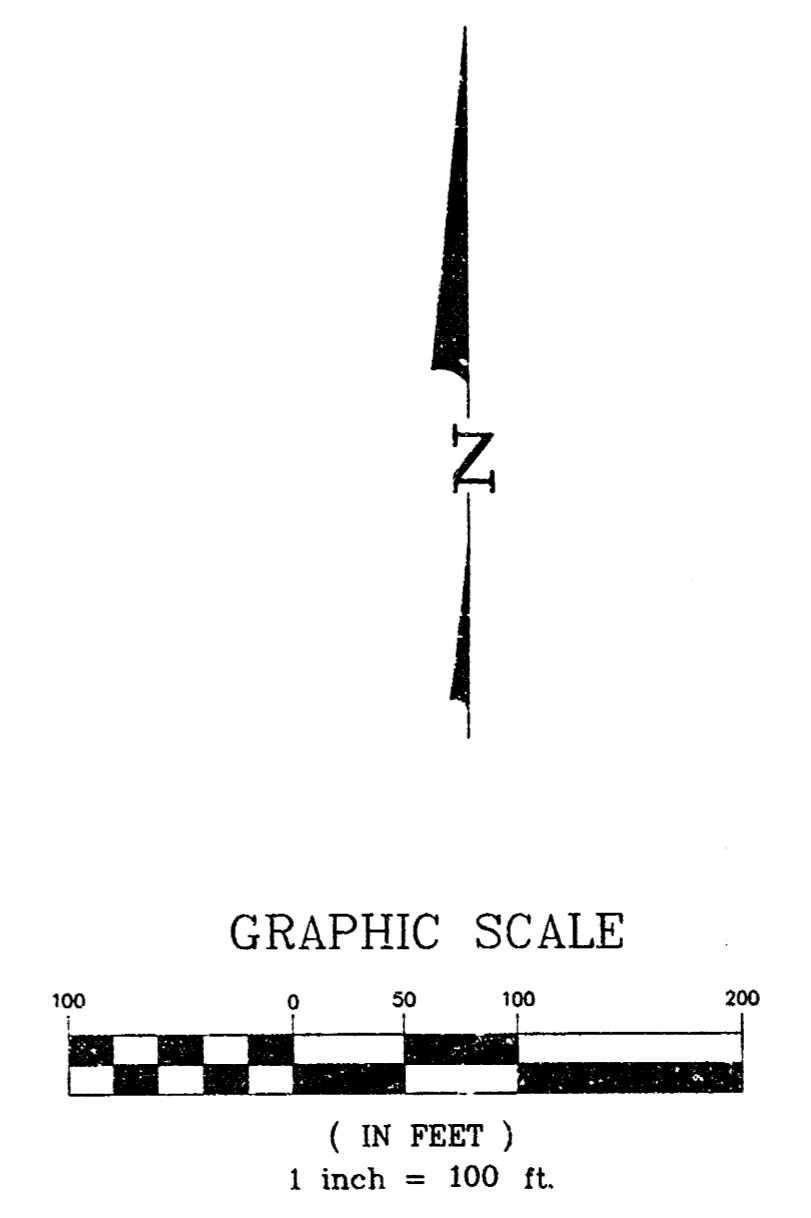
WICHITA, SEDGWICK COUNTY, KANSAS SW 1/4, SECTION 24, T27S, R2W

MAY 1, 1997
REVISED DECEMBER 10, 1997



- LEGEND**
- G = GARAGE FLOOR ELEVATION
 - F = TOP OF FOUNDATION WALL ELEVATION
 - R = REAR SOIL ELEVATION (VIEW OUT)
(REAR WALL 0.5' ABOVE SOIL & 3.5' ABOVE BASEMENT FLOOR)
 - RR = REAR SOIL ELEVATION (VIEW OUT)
(REAR WALL 0.5' ABOVE SOIL & 4' ABOVE BASEMENT FLOOR)
 - B = BASEMENT FLOOR ELEVATION (WALK OUT)
 - (V) = NO VIEW OUT
 - (V) = VIEW OUT
 - (W) = WALKOUT

- BENCHMARKS**
(City of Wichita Datum)
1. Bench Mark #1 City of Wichita std. disk on headwall at Northeast corner of 135th & Maple, 34' Northeast of Southwest corner of Section 24-T27S-R2W. Elevation 150.20
 2. Bench Mark #2 City of Wichita std. disk at Southwest corner of 135th and Rolling Hills Drive, 1/4 mile South of Central, 47' East of CL 135th, 31' South of CL Rolling Hills Drive, 14' South of South curb line. Elevation 161.88
 3. Bench Mark #3 City of Wichita std. disk on Southeast corner of East hubguard of RCB under Forestview, 86' North of CL Maple. Elevation 135.55



- NOTE:**
1. ONLY THOSE TREES WITHIN PROPOSED STREET RIGHT-OF-WAYS MAY BE REMOVED AT THE APPROVAL OF THE OWNER AND/OR THE ENGINEER
 2. THIS GRADING PLAN IS SUBJECT TO CHANGE TO MATCH FINAL PAVING AND DRAINAGE PLANS.
 3. FRONT LOT CORNER ELEVATIONS ARE 0.5 FEET ABOVE THE TOP OF CURB ELEVATION.
 4. GARAGE FLOOR ELEVATIONS ARE SET 3' ABOVE HIGHEST FRONT LOT CORNER ELEVATION (TYPICAL).

PE POE & ASSOCIATES OF KANSAS, INC.
CONSULTING ENGINEERS
2940 E. Central, Suite 200 • Wichita, KS 67208 • 316/265-4114 • Fax 316/265-4444

James M. Liberty
Professional Engineer
14698
12-10-97

APPROVED
DRAINAGE PLAN

REVISED 10 Dec 1997
MAPLE DUNES ADDITION

P:\DUNES\DWG\B\AL\Lot.dwg Thu Dec 11 14:17:59 1997 James Liberty - POE & ASSOCIATES OF KANSAS, INC.