

LOT GRADING PLAN

MAPLE DUNES ADDITION

WICHITA, SEDGWICK COUNTY, KANSAS

SW 1/4, SECTION 24, T27S, R2W

MAY 1, 1997

BENCHMARKS

(City of Wichita Datum)

- Bench Mark #1 City of Wichita std. disk on headwall at Northeast corner of 135th & Maple, 34' Northeast of Southwest corner of Section 24-T27S-R2W. Elevation 150.20
- Bench Mark #2 City of Wichita std. disk at Southwest corner of 135th and Rolling Hills Drive, 1/4 mile South of Central, 47' East of CL 135th, 31' South of CL Rolling Hills Drive, 14' South of South curb line. Elevation 161.88
- Bench Mark #3 City of Wichita std. disk on Southeast corner of East hubguard of RCB under Forestview, 86' North of CL Maple. Elevation 135.58

LEGEND

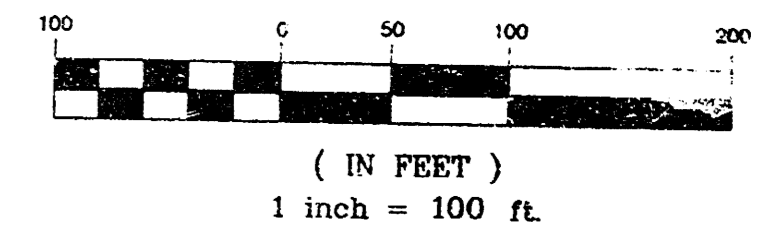
- G = GARAGE FLOOR ELEVATION
- F = TOP OF FOUNDATION WALL ELEVATION
- R = TOP OF REAR WALL ELEVATION (VIEW OUT)
- B = BASEMENT FLOOR ELEVATION (WALK OUT)
- (NV) = NO VIEW OUT
- (VO) = VIEW OUT
- (WO) = WALK OUT

NOTE:

- ONLY THOSE TREES WITHIN PROPOSED STREET RIGHT-OF-WAYS MAY BE REMOVED AT THE APPROVAL OF THE OWNER AND/OR THE ENGINEER
- THIS GRADING PLAN IS SUBJECT TO CHANGE TO MATCH FINAL PAVING AND DRAINAGE PLANS.
- FRONT LOT CORNER ELEVATIONS ARE 0.5 FEET ABOVE THE TOP OF CURB ELEVATION.



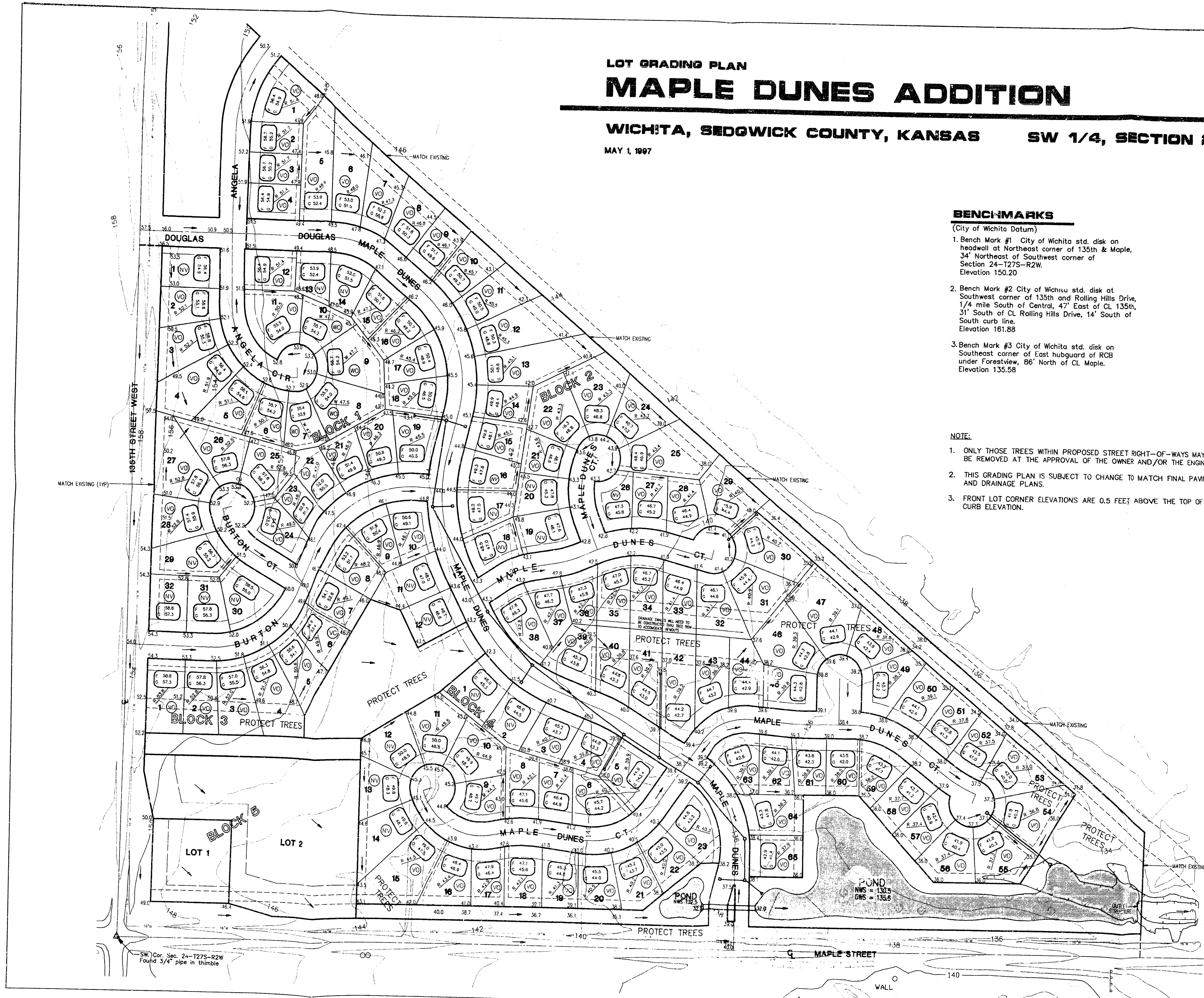
GRAPHIC SCALE



APPROVED
DRAINAGE PLAN

MAPLE
DUNES
ADD'N.

X:\VPPS\DATA\PROJECTS\160\ALTBRO Fr1 May 2 07:53:34 1997 dcm hsk:tlrs



SW Cor. Sec. 24-T27S-R2W
Found 3/4" pipe in thimble