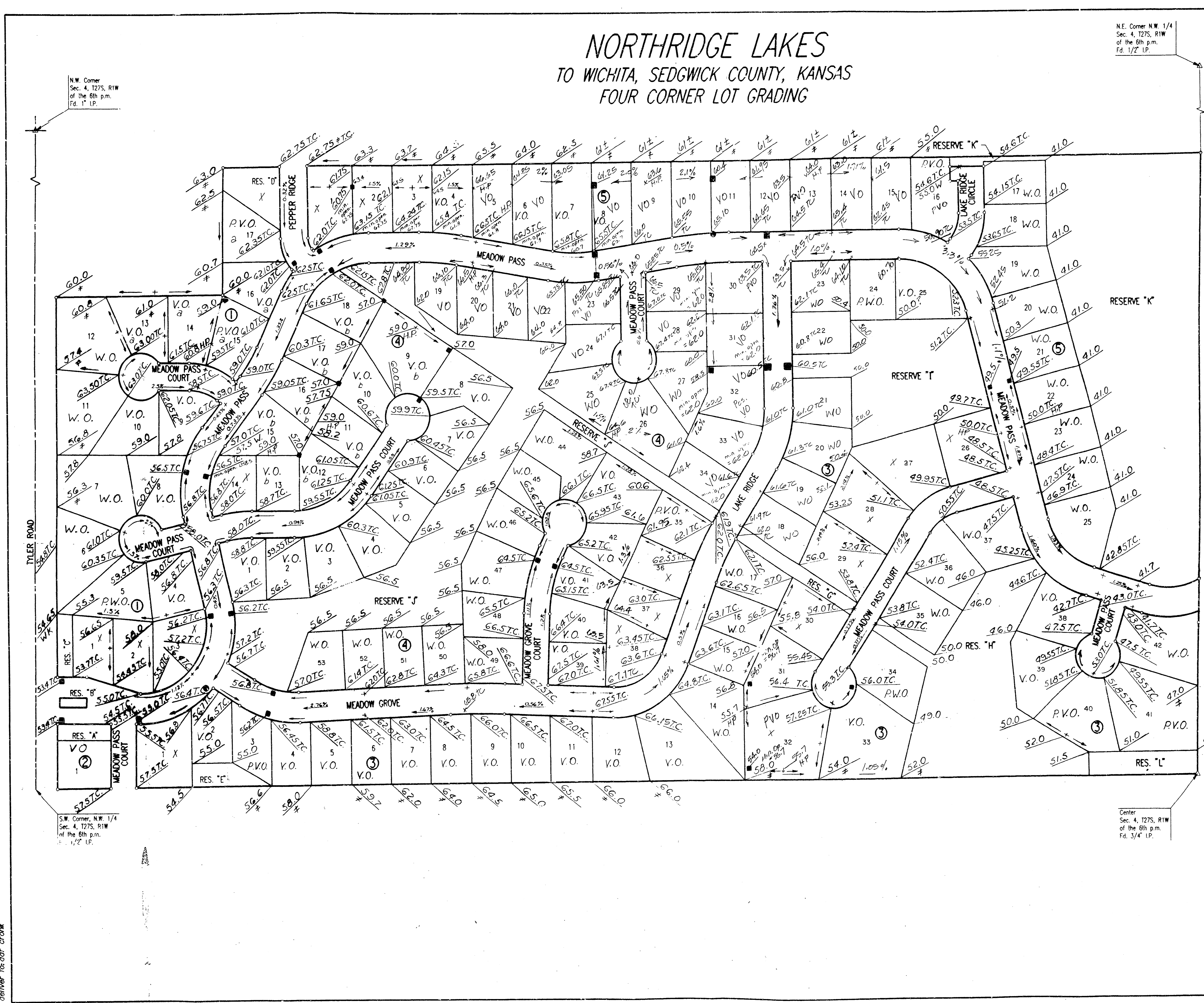


NORTHRIDGE LAKES TO WICHITA, SEDGWICK COUNTY, KANSAS FOUR CORNER LOT GRADING

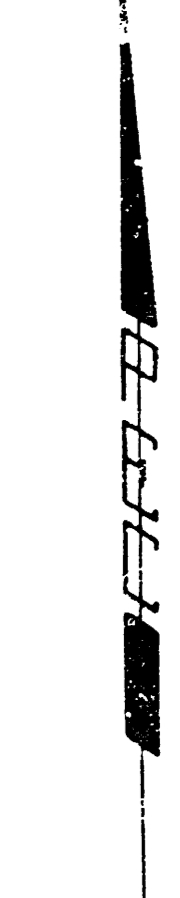


N.E. Corner N.W. 1/4
Sec. 4, T27S, R1W
of the 6th p.m.
Fd. 1/2 LP.

N.W. Corner
Sec. 4, T27S, R1W
of the 6th p.m.
Fd. 1/2 LP.

S.W. Corner N.W. 1/4
Sec. 4, T27S, R1W
of the 6th p.m.
Fd. 1/2 LP.

Center
Sec. 4, T27S, R1W
of the 6th p.m.
Fd. 3/4 LP.



SCALE: 1"=100'
○ = IRON SET
BSL = BUILDING SETBACK LINE
CAC = COMPLETE ACCESS CONTROL

B.M. - CITY OF WICHITA BENCH MARK DISC. 38 FEET WEST AND 90 FEET SOUTH OF THE INTERSECTION OF THE CENTERLINES OF TYLER ROAD AND 21ST STREET NORTH.
ELEV. 1357.349 M.S.L. = 169.949 CITY DATUM

B.M. - RAILROAD SPIKE IN SOUTHWEST SIDE OF POWER POLE LOCATED 75' NORTH AND 58' EAST OF THE INTERSECTION OF THE CENTERLINES OF RIDGE ROAD AND 21ST STREET NORTH.
ELEV. 1330.70 M.S.L. = 143.30 CITY DATUM

MINIMUM PAD ELEVATION (LOWEST OPENING) AS FOLLOWS:

BLOCK 3
LOTS 20 THROUGH 29 ELEV. 1349.5 M.S.L. = 162.1 CITY DATUM
LOTS 34 AND 35 ELEV. 1350.5 M.S.L. = 163.1 CITY DATUM
LOTS 36 THROUGH 41 ELEV. 1344.6 M.S.L. = 157.2 CITY DATUM

BLOCK 4
LOTS 1 THROUGH 9, LOTS 19 THROUGH 25 AND LOTS 45 THROUGH 54 ELEV. 1357.0 M.S.L. = 169.6 CITY DATUM

BLOCK 5
LOTS 17 THROUGH 25 ELEV. 1338.4 M.S.L. = 151.0 CITY DATUM

Note: Add 1300 to all Elevations to obtain M.S.L.
City Datum = M.S.L. - 1187.4

- LEGEND**
- H.P. High Point
 - # Match Existing
 - T.C. Top of Curb Elevation
 - W Walk Grade Elevation
 - V.O. View Out Basement Lot
 - P.V.O. Possible View Out Basement Lot
 - N.V.O. No View Out Basement Lot
 - W.O. Walk Out Basement Lot
 - P.W.O. Possible Walk Out Basement Lot
 - V.G. Valley Gutter
 - o Min. Opening for View Out or Walk Out Basement ≥ 1361.8
 - b Min. Opening for View Out or Walk Out Basement ≥ 1360.0
 - c Min. Opening for View Out or Walk Out Basement ≥ 1358.5

**APPROVED
DRAINAGE PLAN**

usr/ustm/dgm: 95054/northridge
date plotted: 4/25/95
delivered to: dar cronk