

OAK CLIFF ESTATES 5TH ADDITION TO WICHITA, SEDGWICK COUNTY, KANSAS

N.W. CORNER S.E. 1/4
SEC. 19, T27S, R1W
OF THE 6TH P.M.

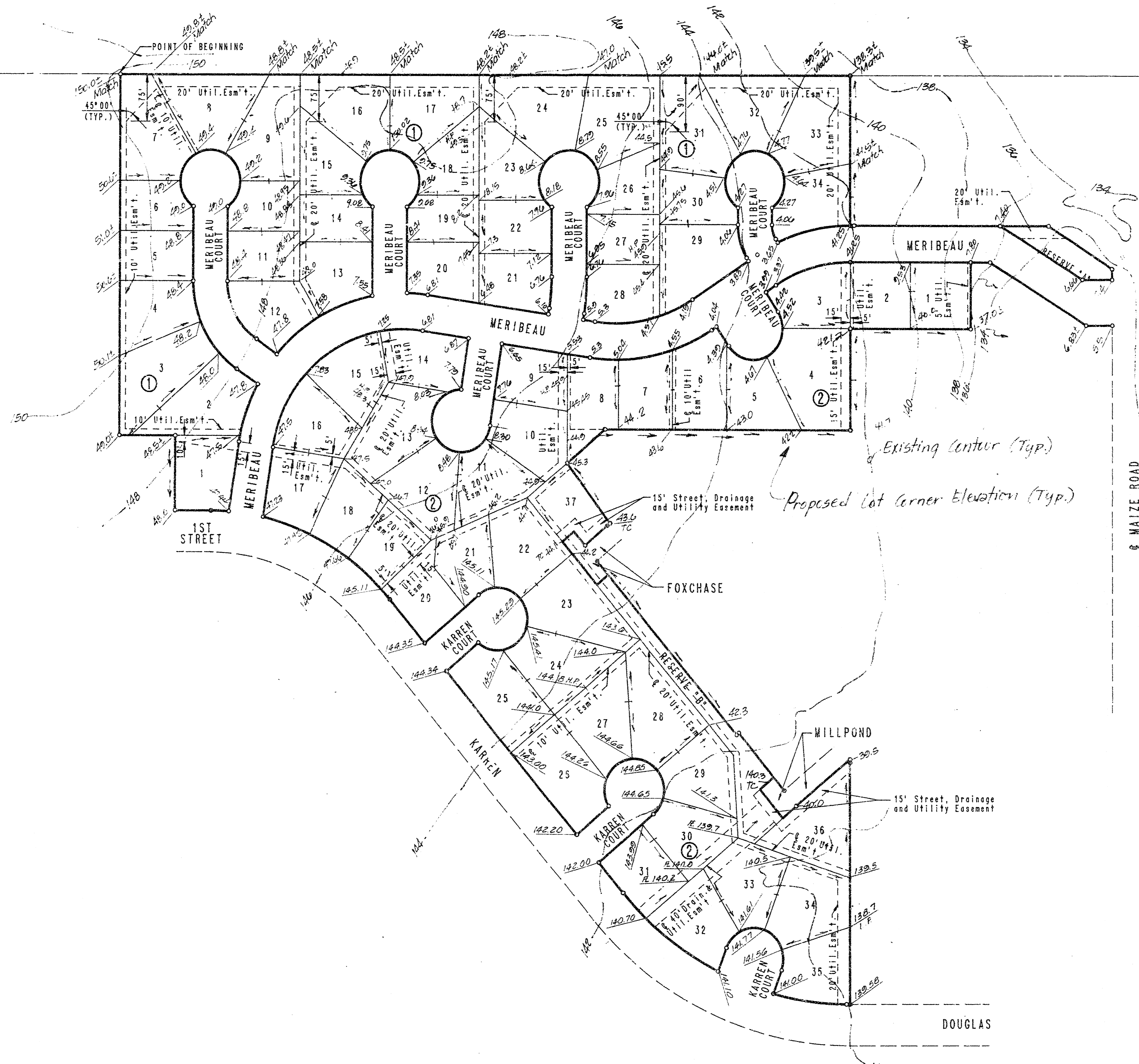
N.E. CORNER S.E. 1/4
SEC. 19, T27S, R1W
OF THE 6TH P.M.

SCALE: 1"=100'
 ○ = IRON SET
 ● = IRON FOUND
 B.S.L. = BUILDING SETBACK LINE

B.M. - INTERSECTION OF MAIZE ROAD AND MAPLE.
 CITY OF WICHITA BENCH MARK DISC 43.5 FT.
 SOUTH AND 52.7 FT. EAST OF INTERSECTION
 CENTERLINE OF BOTH.
 ELEV. +133.195 CITY DATUM
 ELEV. +1320.595 W.S.L.

MINIMUM PAD ELEVATION (LOWEST OPENING) FOR LOTS 1
 AND 2, BLOCK 2 = ELEV. 1324.0 W.S.L.

FOR ADDITIONAL SETBACKS SEE C.U.P. DP-175 ON FILE
 WITH THE METROPOLITAN AREA PLANNING DEPARTMENT.



**APPROVED
DRAINAGE PLAN**

OAK CLIFF
 Estates 5th
 → Revised 22 Sept '92
 V.R.H. 10/3/92
 Rev. Sept 22, 1992
 Rev. Nov. 19, 1991
 DETAILED DRAINAGE PLAN April, 1991

FILMED FROM THE BEST
AVAILABLE COPY....