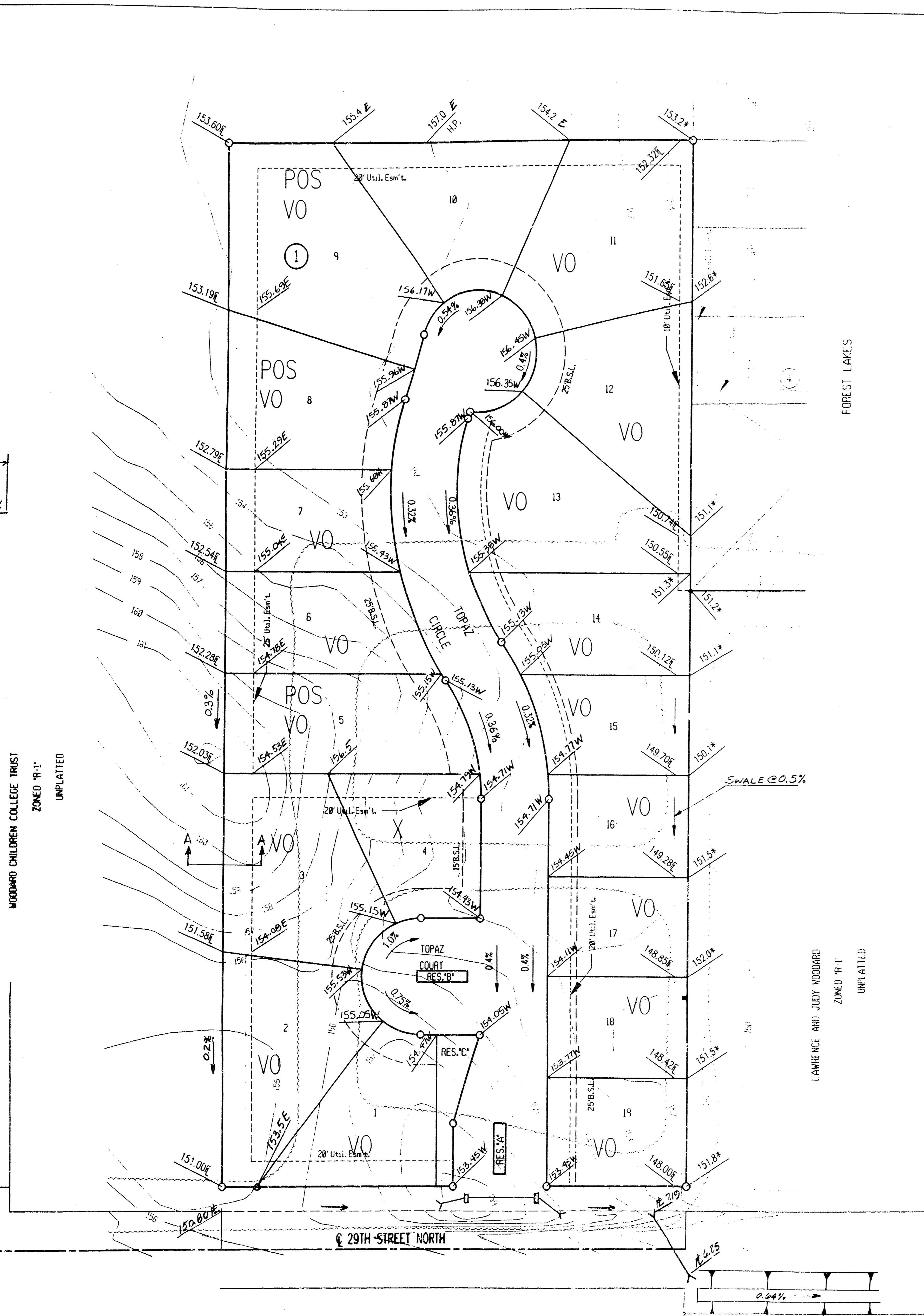
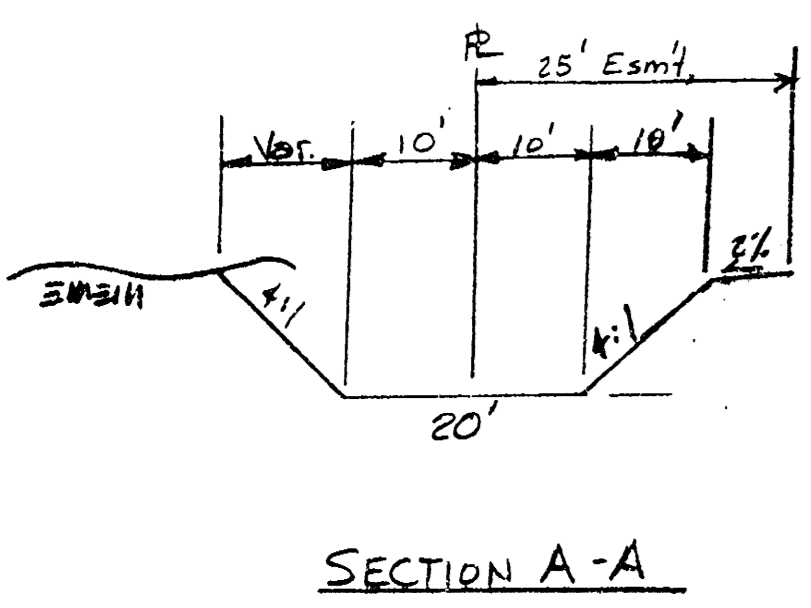


**APPROVED  
DRAINAGE PLAN**

**FOUR-CORNER  
DRAINAGE PLAN**  
**OAK RIDGE ADDITION**

**OWNER: J.V. VAN ALLEN**  
**R.R. 2 BOX 108**  
**BELLE PLAINE, KANSAS 67013**

**ENGINEER: PROFESSIONAL ENGINEERING CONSULTANTS, P.A.**  
**303 S. TOPEKA**  
**WICHITA, KANSAS 67202**



SCALE: 1"=50'  
REVISED 9 FEB 96 MWS  
11-1-95

TOPOGRAPHY DATE: JUNE, 1995

**LEGEND**  
X - MATCH  
E - EASEMENT GRADE  
R - FLOW LINE

DATUM B.M. - CHISELED 'C' ON N.E. CORNER OF EAST HEADWALL OF HCB UNDER RIDGE ROAD AT 200'± NORTH OF EAST 1/4 CORNER, SEC. 4, T27S, R1W.  
ELEV. 138.46 CITY DATUM  
ELEV. 1325.64 M.S.L.

RESERVES 'A', 'B' AND 'C' SHALL PERMIT LANDSCAPING, LIGHTNING AND UTILITIES CONFINED TO EASEMENTS.

UTILITY NOTES  
POWER: OVERHEAD ELECTRIC 3 PHASE, 4 WIRE, EAST-WEST ON 29TH STREET APPROX. 25' NORTH OF CENTERLINE.

TELEPHONE: BURIED TELEPHONE EAST-WEST ON 29TH STREET APPROX. 21' SOUTH OF CENTERLINE.

NATURAL GAS: 4" PLASTIC PEOPLES GAS MAIN ON 29TH STREET; WEST END = 117' WEST OF WEST LINE OF FOREST LAKES.

SANITARY SEWER: 8" SANITARY SEWER AVAILABLE 480' EAST OF SOUTHEAST CORNER OF PROPOSED PLAT.

OAK RIDGE ADDITION

Plat Over map K 27 29 Feb 1996