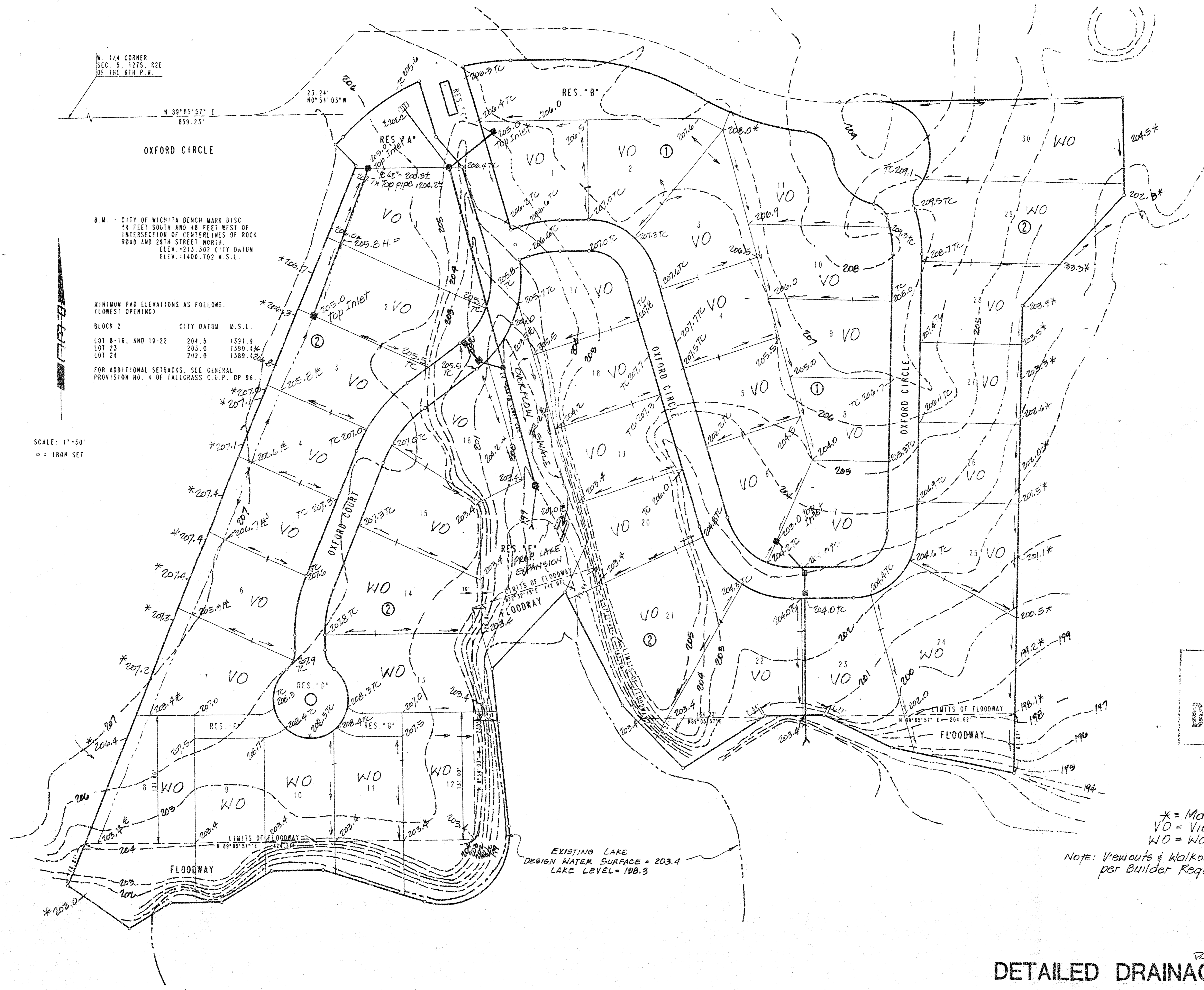


OXFORD ADDITION

TO WICHITA, SEDGWICK COUNTY, KANSAS



W. 1/4 CORNER
SEC. 5, 127S, R2E
OF THE 6TH P.M.

N 89°05'57" E
859.23'

OXFORD CIRCLE

B.M. - CITY OF WICHITA BENCH MARK DISC
44 FEET SOUTH AND 48 FEET WEST OF
INTERSECTION OF CENTERLINES OF ROCK
ROAD AND 29TH STREET NORTH
ELEV. +215.302 CITY DATUM
ELEV. +1400.702 M.S.L.

MINIMUM PAD ELEVATIONS AS FOLLOWS:
(LOWEST OPENING)

BLOCK 2	CITY DATUM	M.S.L.
LOT 8-16, AND 19-22	204.5	1391.9
LOT 23	203.0	1390.4
LOT 24	202.0	1389.4

FOR ADDITIONAL SETBACKS, SEE GENERAL
PROVISION NO. 4 OF TALLGRASS C.V.P. DP 86.

SCALE: 1"=50'
○ = IRON SET

**APPROVED
DRAINAGE PLAN**

x = Match Existing
VO = View-Out
WO = Walk-Cut
Note: Viewouts & Walkouts May vary
per Builder Requirements.

EXISTING LAKE
DESIGN WATER SURFACE = 203.4
LAKE LEVEL = 198.3

OXFORD ADDITION
PLAT CARD MARKED
DETAILED DRAINAGE PLAN 3-20-92