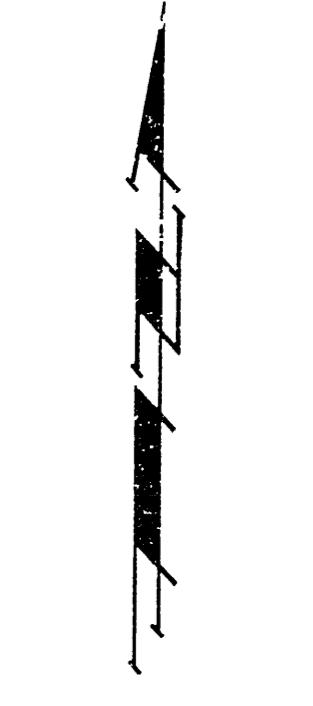
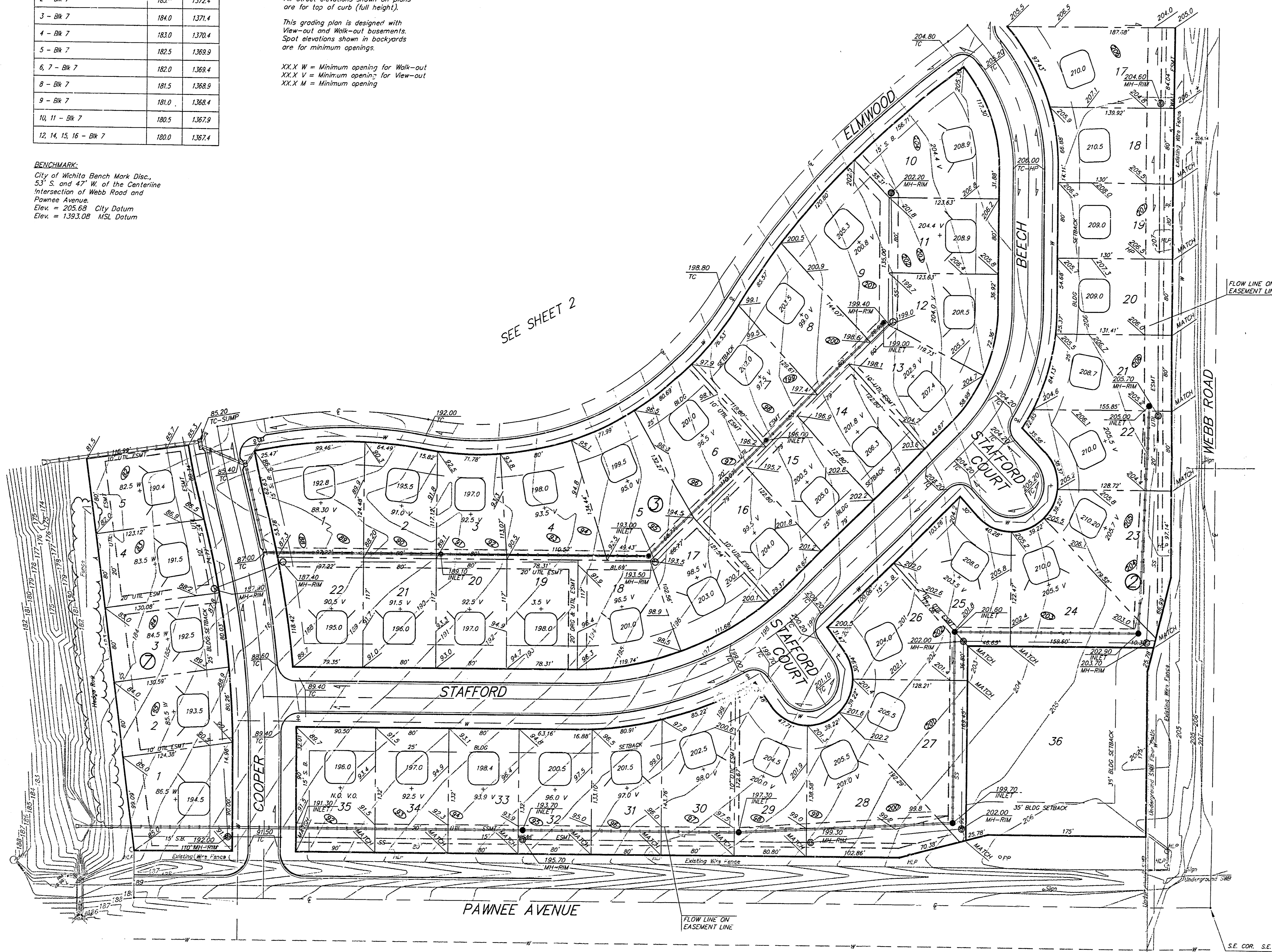


MINIMUM BUILDING PAD ELEVATIONS FOR LOWEST OPENING OF STRUCTURE

Lot & Block	City Datum	M.S.L.
1 - Blk 7	186.0	1371.4
2 - Blk 7	185.0	1372.4
3 - Blk 7	184.0	1371.4
4 - Blk 7	183.0	1370.4
5 - Blk 7	182.5	1369.9
6, 7 - Blk 7	182.0	1368.4
8 - Blk 7	181.5	1368.9
9 - Blk 7	181.0	1368.4
10, 11 - Blk 7	180.5	1367.9
12, 14, 15, 16 - Blk 7	180.0	1367.4

NOTE:
 Proposed minimum finish floor elevations are shown on plans. Contractor to set garage floor elevation.
 All street elevations shown on plans are for top of curb (full height).
 This grading plan is designed with View-out and Walk-out basements. Spot elevations shown in backyards are for minimum openings.
 XX.X W = Minimum opening for Walk-out
 XX.X V = Minimum opening for View-out
 XX.X M = Minimum opening

BENCHMARK:
 City of Wichita Bench Mark Disc.,
 53' S. and 47' W. of the Centerline
 Intersection of Webb Road and
 Pawnee Avenue.
 Elev. = 205.88 City Datum
 Elev. = 1393.08 M.S.L. Datum



1" = 60'-0"
 • = 1/2" Rebar

**APPROVED
 DRAINAGE PLAN**

Revised 11/17/99
 Revised 6/24/98
 Revised 5/18/97

**PEBBLEBROOK ADDITION
 LOT GRADING PLAN**

BAUGHMAN COMPANY P.A.
 ENGINEERING, SURVEYING, & PLANNING
 315-262-7271 • 315 ELLIS • WICHITA, KANSAS 67211

DESIGN B.A.M.	DRAWN	APPROVED	DATE 4-5-93	SCALE 1"=60'
------------------	-------	----------	----------------	-----------------

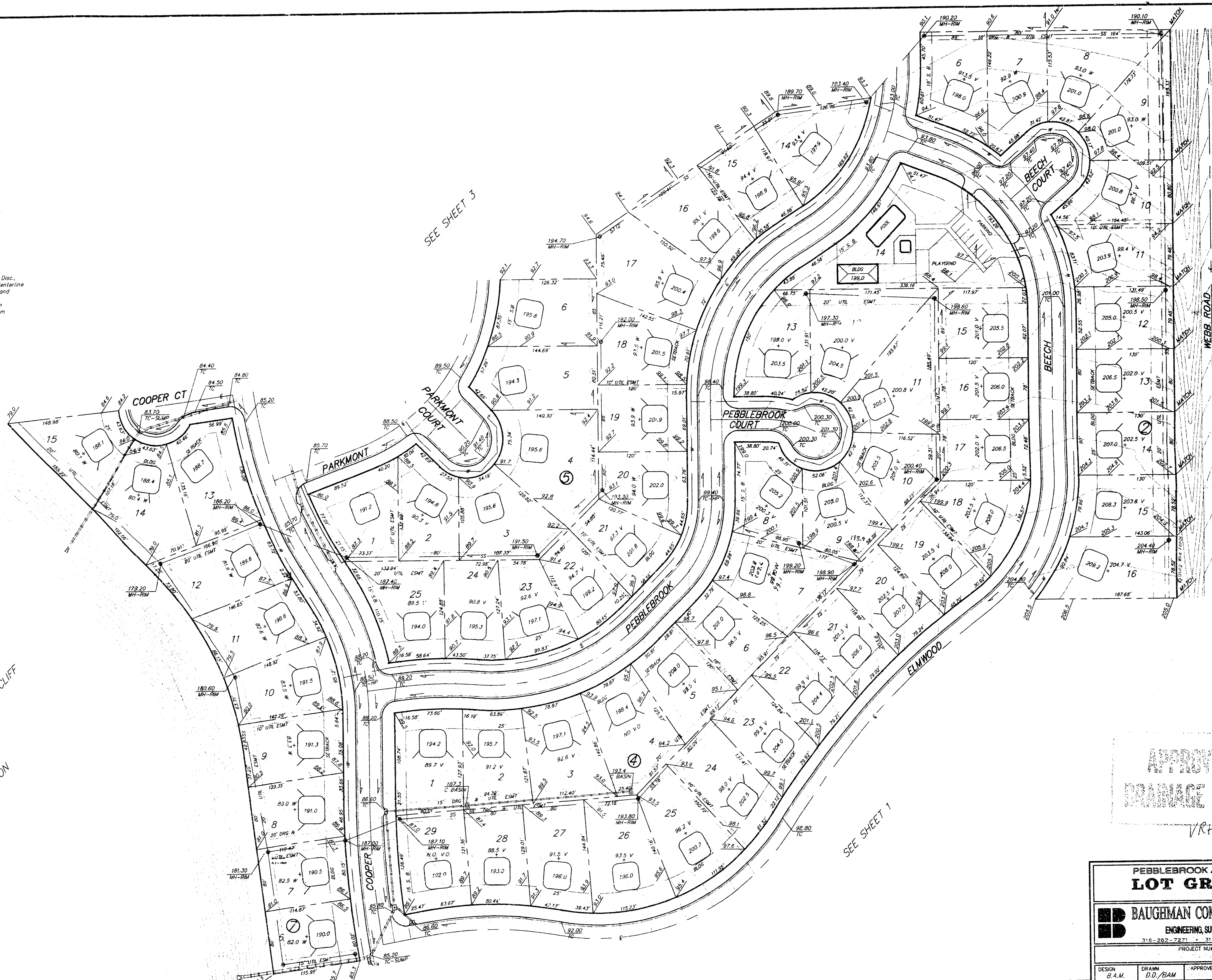
PROJECT NUMBER
 SHEET 1
 3

HEDGECLIFF
 2ND
 ADDITION

S.E. COR. SE 1/4
 SEC. 32-27S-2E

BENCHMARK:
 City of Wichita Bench Mark Disc.
 53' S. and 47' W. of the Centerline
 Intersection of Webb Road and
 Pownee Avenue
 Elev. = 205.63 City Datum
 Elev. = 1393.08 MSL Datum

HEDGECLIFF
 2ND
 ADDITION



1" = 60'-0"
 • = 1/2" Rebar

XX.X W = Min. of Walkway
 XX.X V = Min. of V.I.A.M.T.
 XX.X M = Min. of M.
 Min. Fin. Elev. of Sluice
 (Cont. set on Plat.)

APPROVED
 [Signature]

VR# 10/2/98

Note
 Revised 10/12/98
 Revised 6/24/99
 Revised 4/1/00

PEBBLEBROOK ADDITION			
LOT GRADING PLAN			
BAUGHMAN COMPANY P. A.			
ENGINEERING, SURVEYING, & PLANNING			
316-262-7271 • 315 ELLIS • WICHITA, KANSAS 67211			
PROJECT NUMBER			
DESIGN	DRAWN	APPROVED	DATE
B.A.M.	D.D./BAM	[Signature]	4-7-93
			SCALE
			1"=60'
			SHEET
			2
			OF
			3