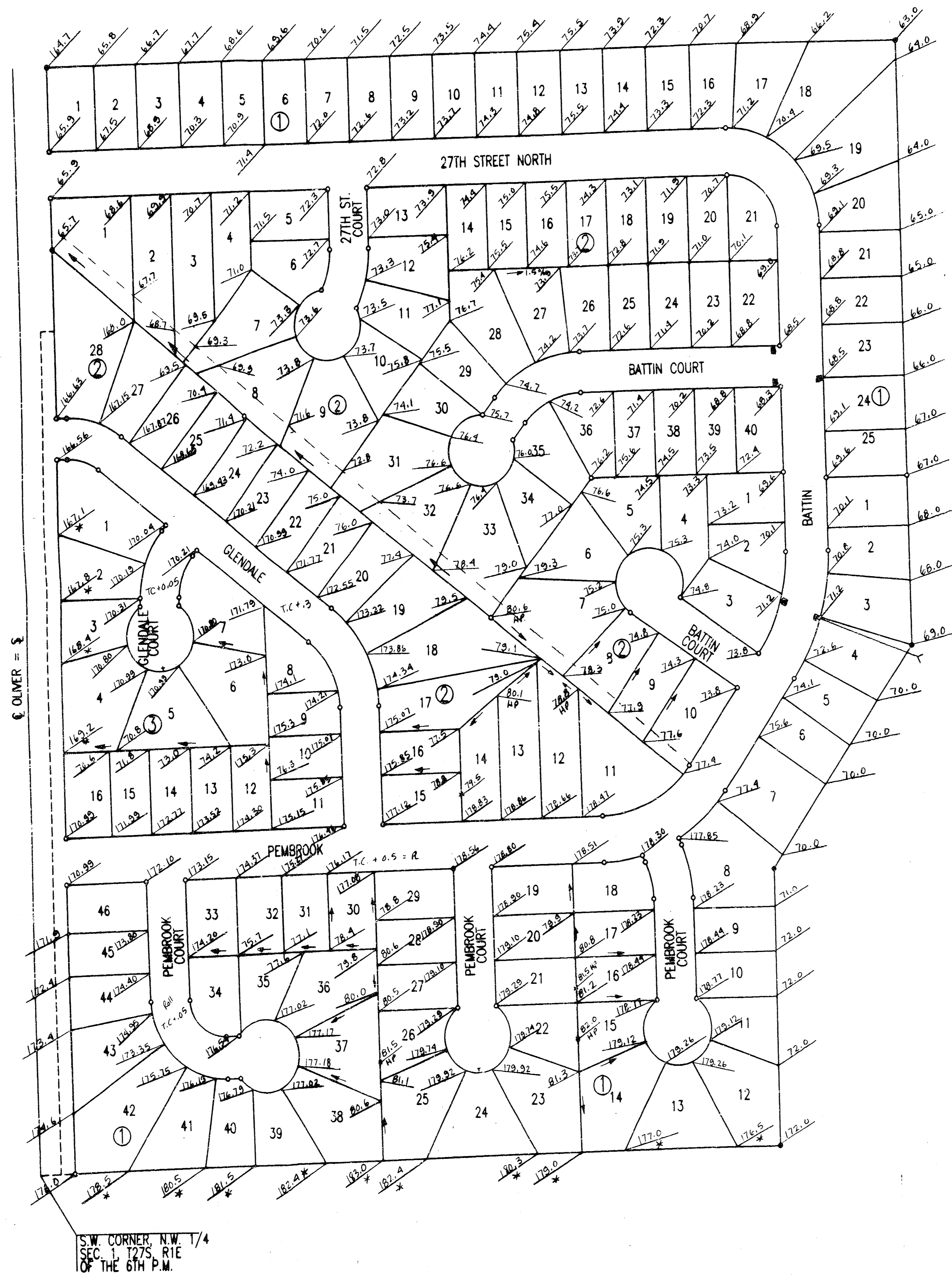


PEMBROOK

AN ADDITION, TO WICHITA, SEDGWICK COUNTY, KANSAS



SCALE: 1"=100'

○ = IRON SET
 ● = IRON FOUND

CALC. MEAS. = CALCULATED FROM MEASUREMENT
 MEAS. = MEASURED

S.S. = SANITARY SEWER
 B.S.L. = BUILDING SETBACK LINE

B.M. - DISC 29' NORTH AND 33' EAST OF CENTERLINE OLIVER AND 29TH STREET NORTH.
 ELEV.=159.68 CITY DATUM

B.M. - RAILROAD SPIKE IN S.W. FACE OF POWER POLE 26.5' NORTH OF 1/16 CORNER, 1/4 MILE EAST OF 29TH STREET NORTH AND OLIVER.
 ELEV.=161.18 CITY DATUM

MINIMUM PAD ELEVATION (LOWEST OPENING) AS FOLLOWS:

BLOCK 1	ELEV. 167.00	CITY DATUM
LOT 1	ELEV. 168.00	CITY DATUM
LOT 2	ELEV. 168.00	CITY DATUM
LOTS 3 AND 4	ELEV. 169.00	CITY DATUM
LOTS 5 THROUGH 7	ELEV. 170.00	CITY DATUM
LOTS 8 AND 9	ELEV. 171.00	CITY DATUM
LOTS 10 THROUGH 12	ELEV. 172.00	CITY DATUM

THIS ADDITION IS SUBJECT TO THE REQUIREMENTS OF THE BEACON HILL, C.U.P., DP-147 ON FILE WITH THE METROPOLITAN AREA PLANNING DEPARTMENT.

* Match Existing Elevation

Pembroke & Pembroke 2nd

**APPROVED
 DRAINAGE PLAN**

S.W. CORNER, N.W. 1/4
 SEC. 1, T27S, R1E
 OF THE 6TH P.M.