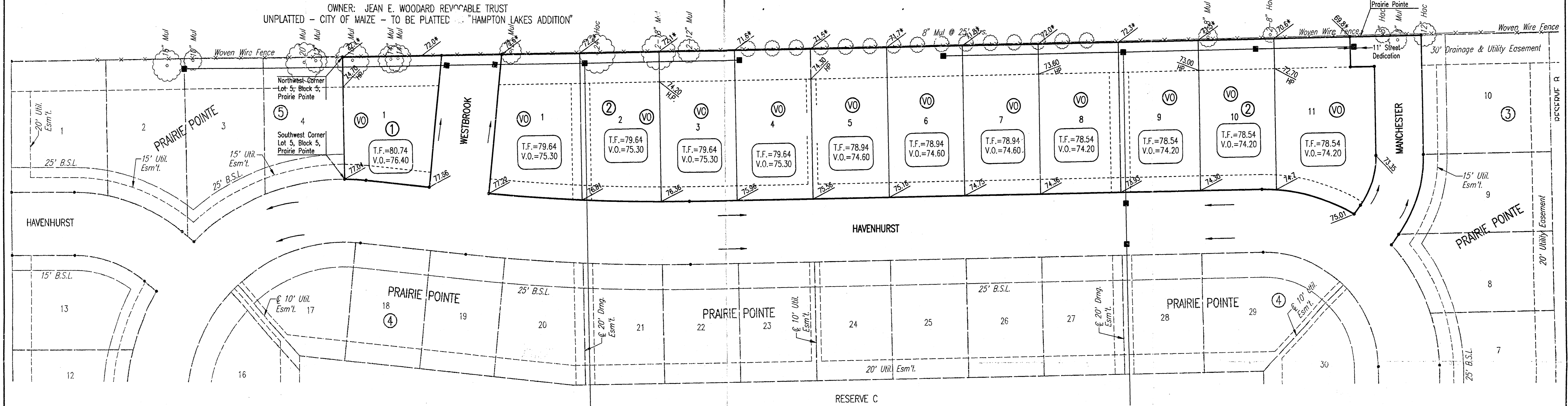


**FOUR-CORNER PLAN  
PRAIRIE POINTE 2ND**  
AN ADDITION TO WICHITA, SEDGWICK COUNTY, KANSAS

OWNER: JEAN E. WOODARD REVOCABLE TRUST  
UNPLATTED - CITY OF MAIZE - TO BE PLATTED AS "HAMPTON LAKES ADDITION"



SCALE: 1" = 50'  
• = 1/2" REBAR WITH PEC CAP UNLESS OTHERWISE NOTED

- BENCHMARKS:**
- BM 21-A CHISELED SQUARE ON NORTH END 30"x18" RCP ON WEST SIDE OF TRIPLE PIPE AT THE NORTHWEST CORNER OF 37TH ST. NORTH AND MAIZE ROAD. ELEV. = 1354.18 N.G.V.D. (166.78 CITY DATUM)
  - BM 21-C STEP NAILS ON NORTH FACE OF CORNER POST ON SOUTH SIDE OF 37TH ST. NORTH 950'± WEST OF 37TH ST. NORTH AND MAIZE ROAD. ELEV. = 1356.24 N.G.V.D. (168.84 CITY DATUM)
  - BM 21-D CHISELED SQUARE ON CONCRETE BASE OF BRICK FENCE POST ON SOUTH SIDE OF 37TH ST. NORTH 1070'± EAST OF 1/2 MILE LINE. ELEV. = 1355.58 N.G.V.D. (168.18 CITY DATUM)
  - BM 21-E CHISELED SQUARE ON CONCRETE BASE OF BRICK FENCE POST ON SOUTH SIDE OF 37TH ST. NORTH 440'± EAST OF 1/2 MILE LINE. ELEV. = 1357.01 N.G.V.D. (169.61 CITY DATUM)

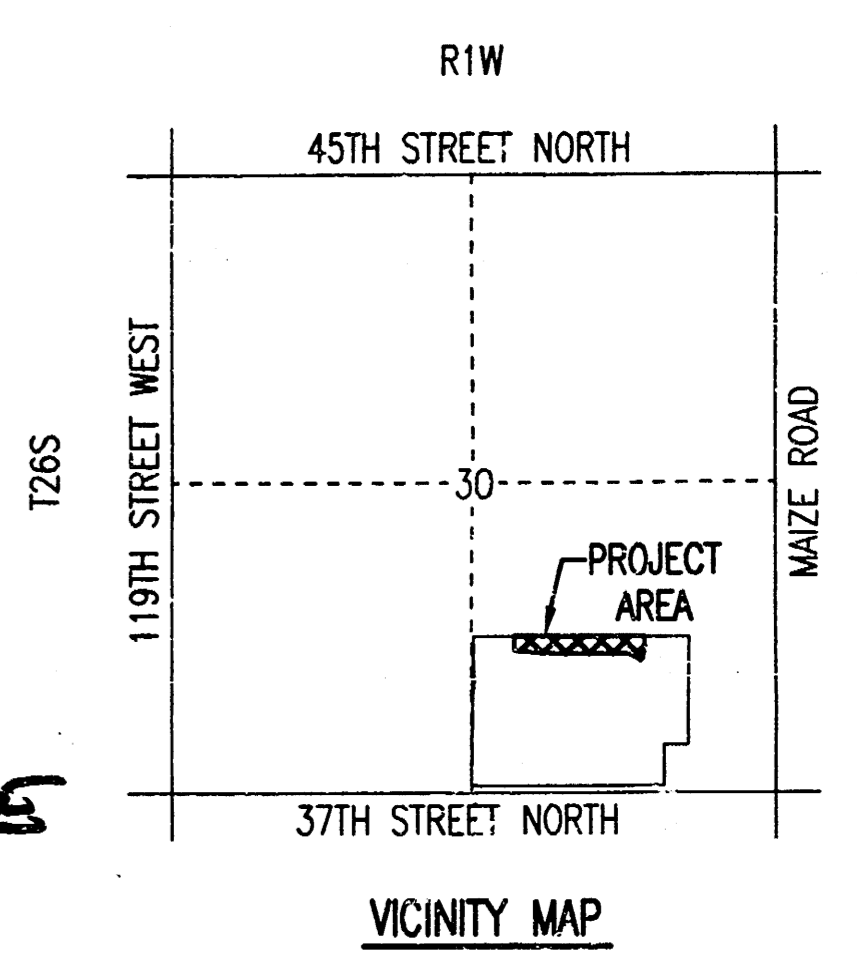
**MINIMUM PAD ELEVATIONS (LOWEST OPENING) SHALL BE AS FOLLOWS:**

BLOCK	ELEVATION (N.G.V.D.)	City Datum
BLOCK 1		
LOT 1	1363.8	176.4
BLOCK 2		
LOTS 1-4	1362.7	175.3
LOTS 5-7	1362.0	174.6
LOTS 8-11	1361.6	174.2

- LEGEND**
- VIEW-OUT BASEMENT
  - STORM WATER FLOW
  - SPOT ELEVATION
  - V.O. VIEW-OUT
  - T.F. TOP OF FOUNDATION

VO OR WO WAS CONSIDERED ACCEPTABLE IF THE TOP OF FOUNDATION WAS 5' OR LESS ABOVE THE PROPERTY LINE.

**APPROVED  
DRAINAGE PLAN**



**PRAIRIE POINTE  
2ND**  
RECEIVED OCT 04 5 - 2006

Plot Scale 1/8" = 20'-22'-2006 8:56:08 AM by SMM  
L:\PROJECTS\2006\10228\10228-01.dwg