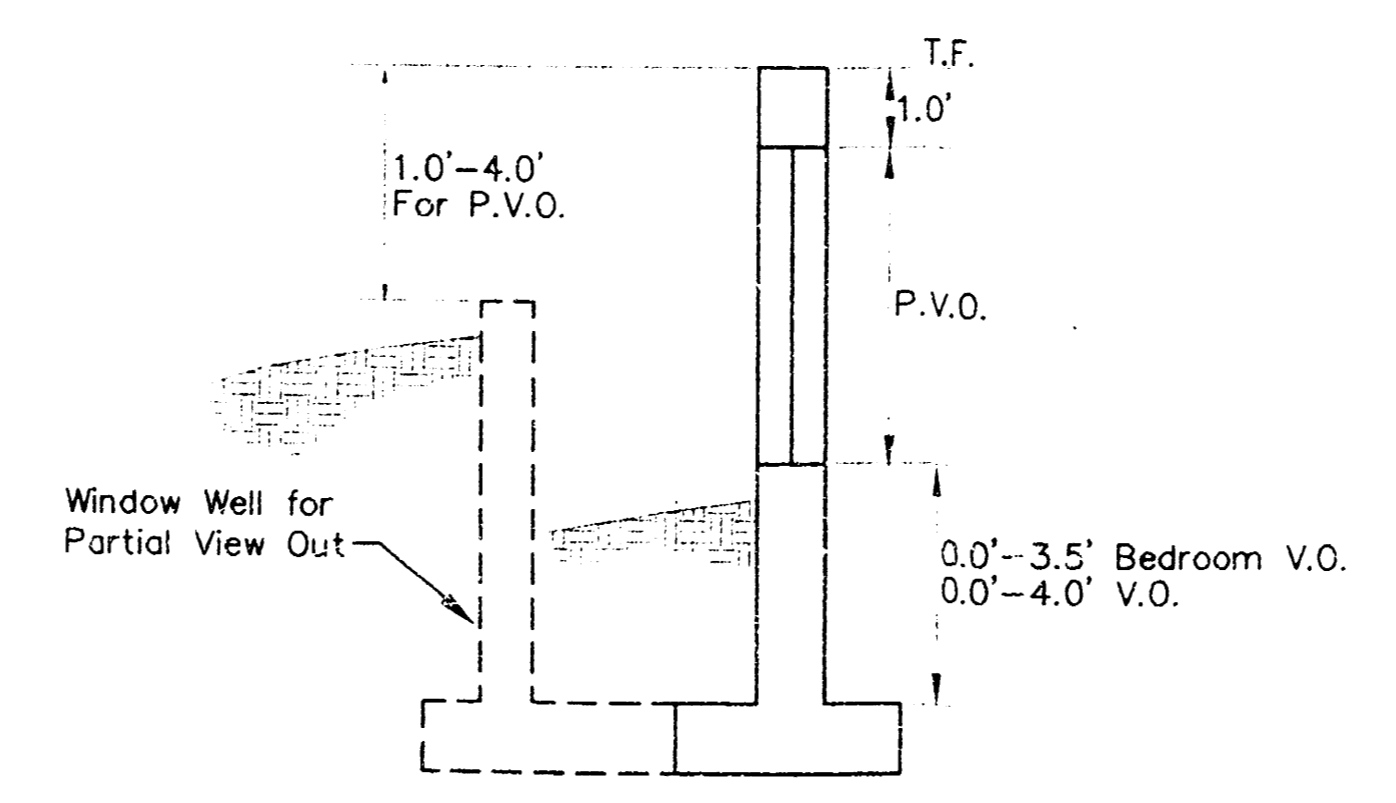


**LEGEND**

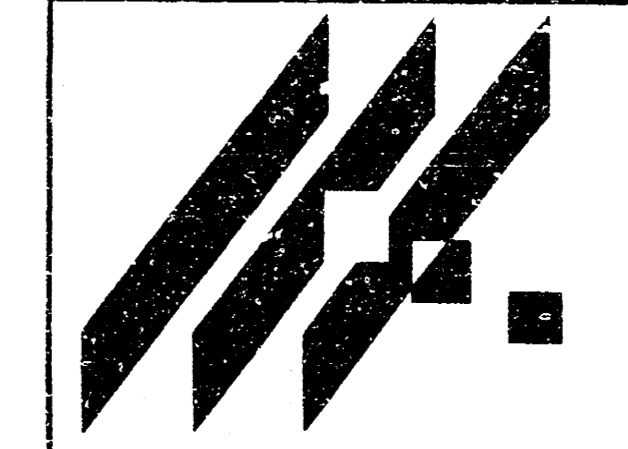
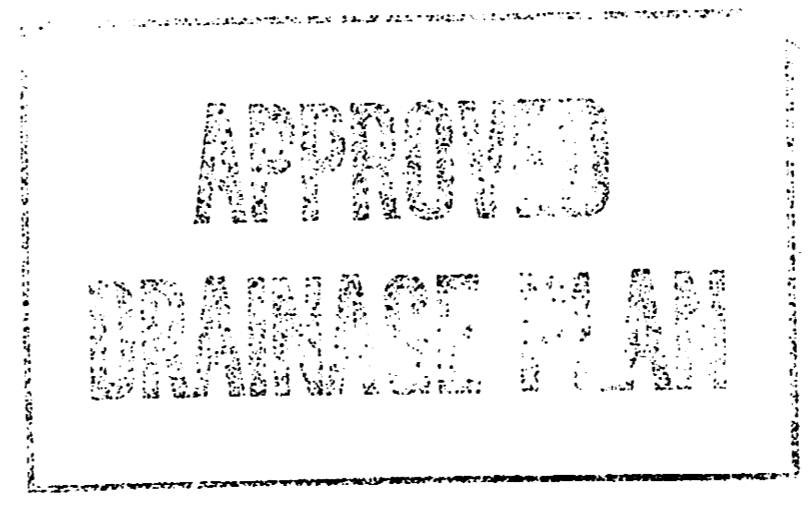
135.0	Proposed Elevations
135.0	Proposed Elevations
V.O.	Top of View Wall Elevation
T.F.	Top of Foundation
Pad	Elevation @ Garage Door Elevation
P.V.O. (See Note)	Partial View Wall Elevation
—140—	Proposed Contour
→	Flow Arrow

Note: P.V.O.'s may be V.O.'s depending on the number of steps added.

Builders shall drop siding or brick ledges or build a retaining wall to transition between properties.



**VIEW OUT & PARTIAL VIEW OUT DETAIL**

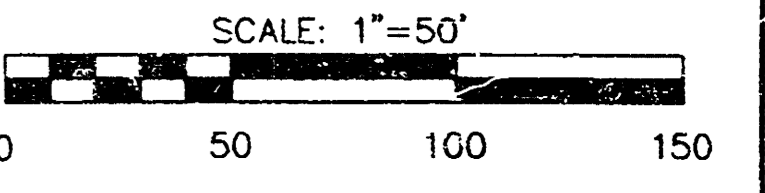


**PRAIRIE WOODS**  
PROJECT NAME

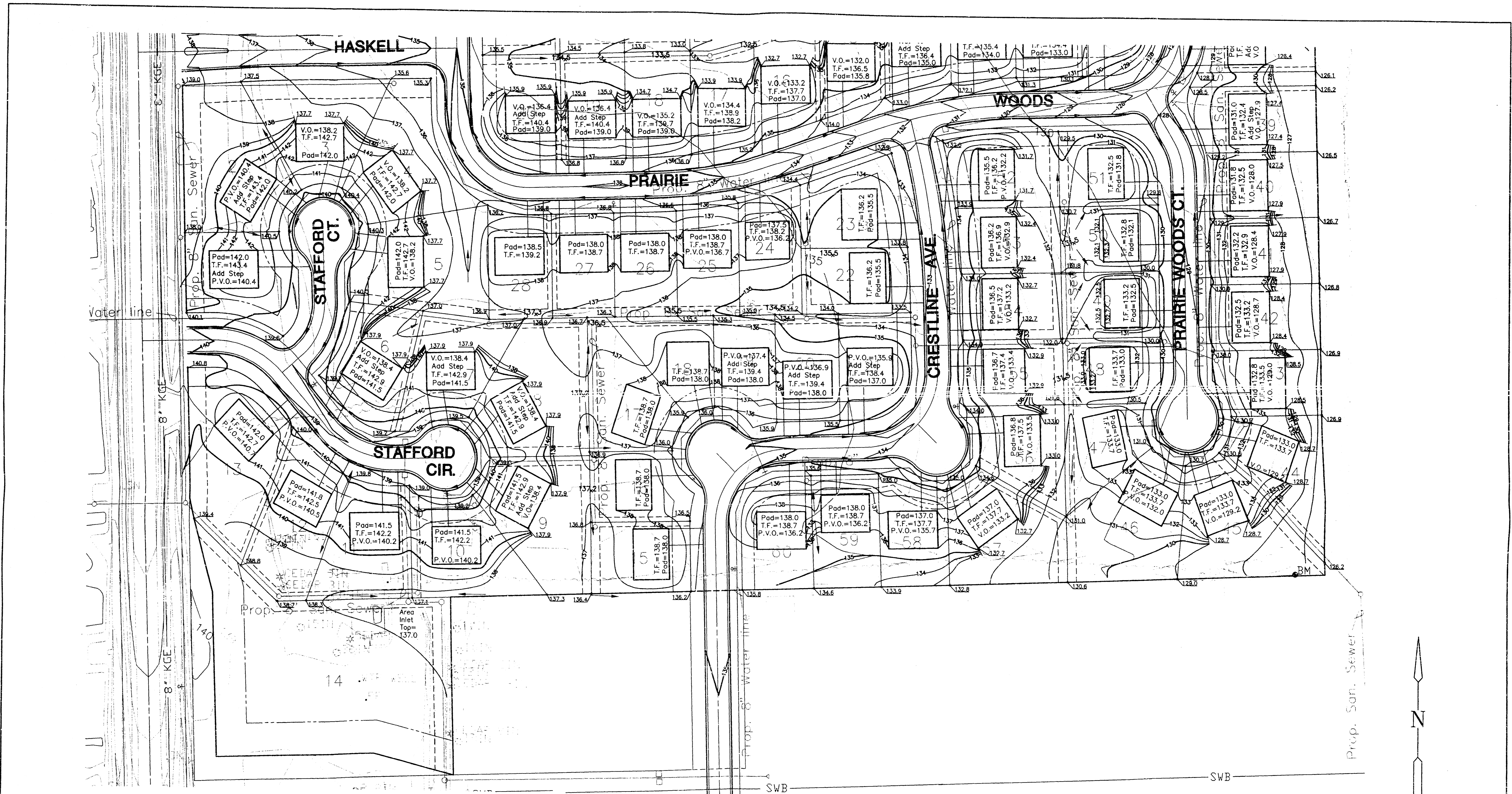
**GRADING PLAN**  
SHEET TITLE

MID-KANSAS ENGINEERING CONSULTANTS, INC.  
411 N. WEBB ROAD  
WICHITA, KS. 67206  
316-684-9600

G.J.A./P.A.F. DESIGN BY  
P.A.F./B.D.M. DRAWN BY  
G.J.A. CHECKED BY  
3/95 DATE  
940880R1 JOB NO.  
1 / 2 SHEET OF



ON PLAT CARD 16 MAY 1995

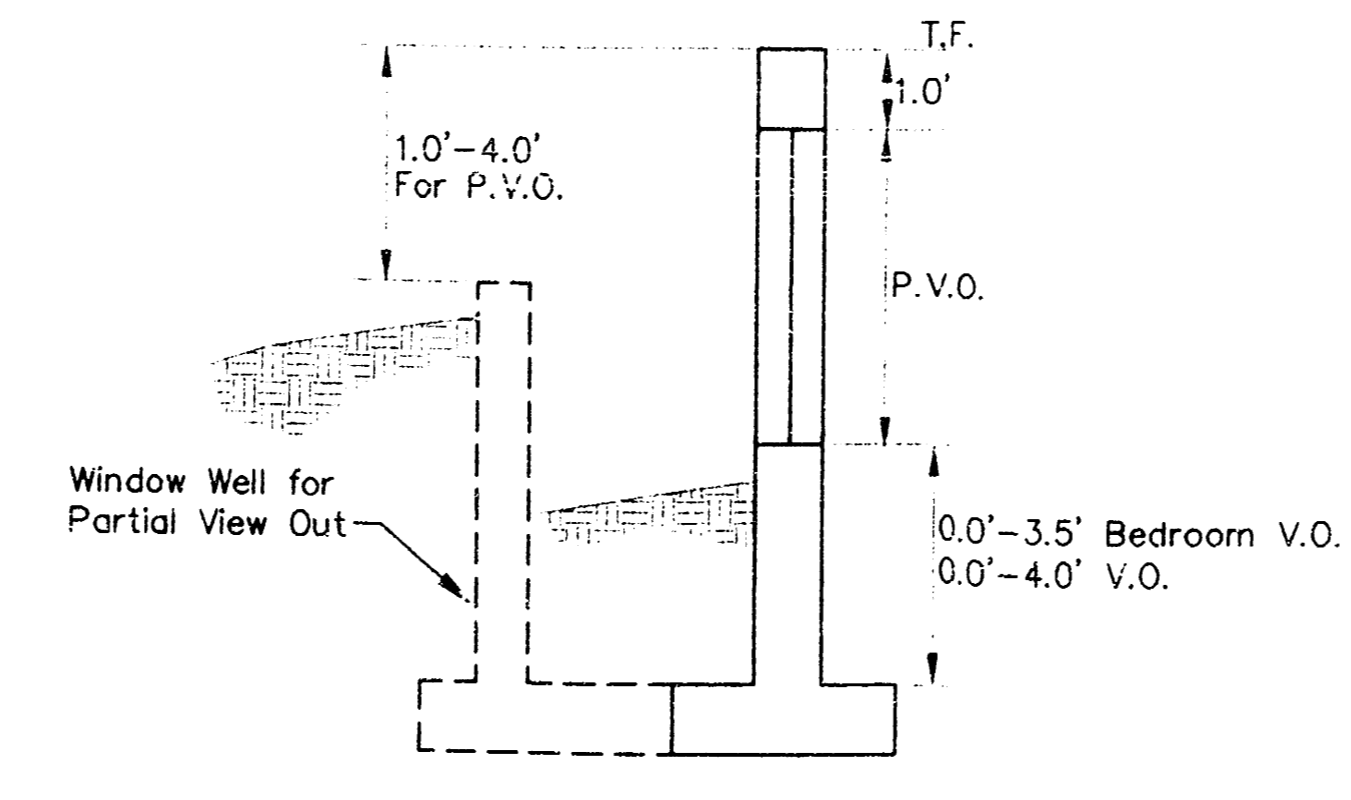


**LEGEND**

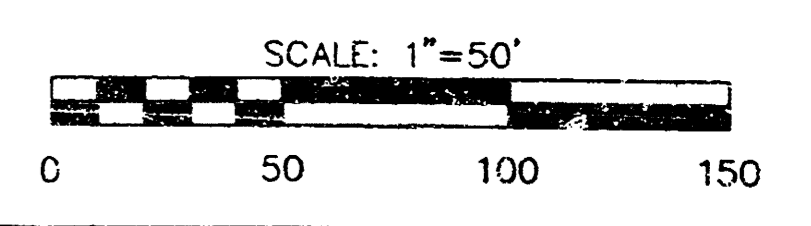
135.0	Proposed Elevations
135.0	Proposed Elevations
V.O.	Top of View Wall Elevation
T.F.	Top of Foundation
Pad	Elevation @ Garage Door Elevation
P.V.O. (See Note)	Partial View Wall Elevation
-140-	Proposed Contour
→	Flow Arrow

Note: P.V.O.'s may be V.O.'s depending on the number of steps added.

Builders shall drop siding or brick ledges or build a retaining wall to transition between properties.



**VIEW OUT & PARTIAL VIEW OUT DETAIL**



**MID-KANSAS ENGINEERING CONSULTANTS, INC.**  
411 N. WEBB ROAD  
WICHITA, KS 67206  
316-684-9600

**PRAIRIE WOODS**  
PROJECT NAME

**GRADING PLAN**  
SHEET TITLE

G.J.A./P.A.F. DESIGN BY:	P.A.F./B.D.M. DRAWN BY:	G.J.A. CHECKED BY:
3/95 DATE	94088GR2 JOB NO.	2 / 2 SHEET OF