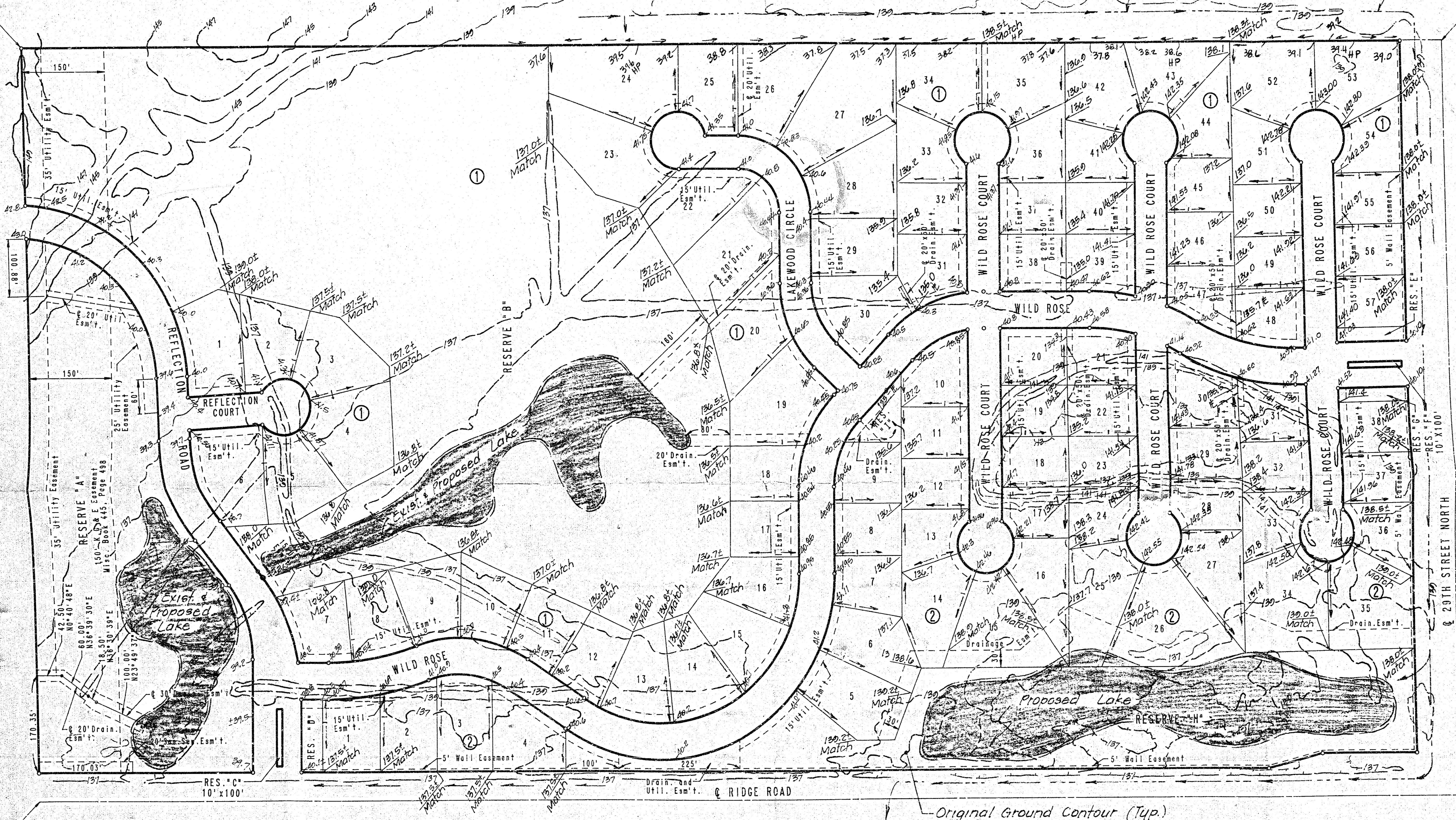


# REFLECTION RIDGE 6TH ADDITION TO WICHITA, SEDGWICK COUNTY, KANSAS

Proposed Temporary "V" Ditch

S.W. COR. E. 1/2, N.E. 1/4  
SEC. 4, T27S, R1W  
OF THE 6TH P.M.

N.W. COR. E. 1/2, N.E. 1/4  
SEC. 4, T27S, R1W  
OF THE 6TH P.M.



SCALE: 1" = 100'  
 ○ = IRON SET  
 U.E. = UTILITY EASEMENT  
 B.S.L. = BUILDING SETBACK LINE  
 C.A.C. = COMPLETE ACCESS CONTROL  
 B.W. - CHISELED "0" N.E. COR. 3-7'X3' RIB  
 BRIDGE ON RIDGE ROAD 175' NORTH OF  
 S.E. COR. N.E. 1/4 SEC. 4, T27S, R1W  
 ELEV. = 1325.64 M.S.L.  
 ELEV. = 1328.52 CITY DATUM  
 MINIMUM PAD ELEVATIONS (LOWEST OPENING)  
 ALL LOTS = 1377.5' S.S.L.  
 = 140.38' City Datum.

Note: Elevations and contours  
 shown are based on  
 City of Wichita Datum.

S.E. COR. N.E. 1/4  
SEC. 4, T27S, R1W  
OF THE 6TH P.M.

N.E. COR. N.E. 1/4  
SEC. 4, T27S, R1W  
OF THE 6TH P.M.

**APPROVED  
DRAINAGE PLAN**

REFLECTION RIDGE 6<sup>th</sup> 170 "H"  
 REVISED 3-15-94

**DETAILED DRAINAGE PLAN**

Revised 3/15/94  
 Revised 11/18/91  
 5/17/91