

# REFLECTION RIDGE 7TH ADDITION TO WICHITA, SEDGWICK COUNTY, KANSAS

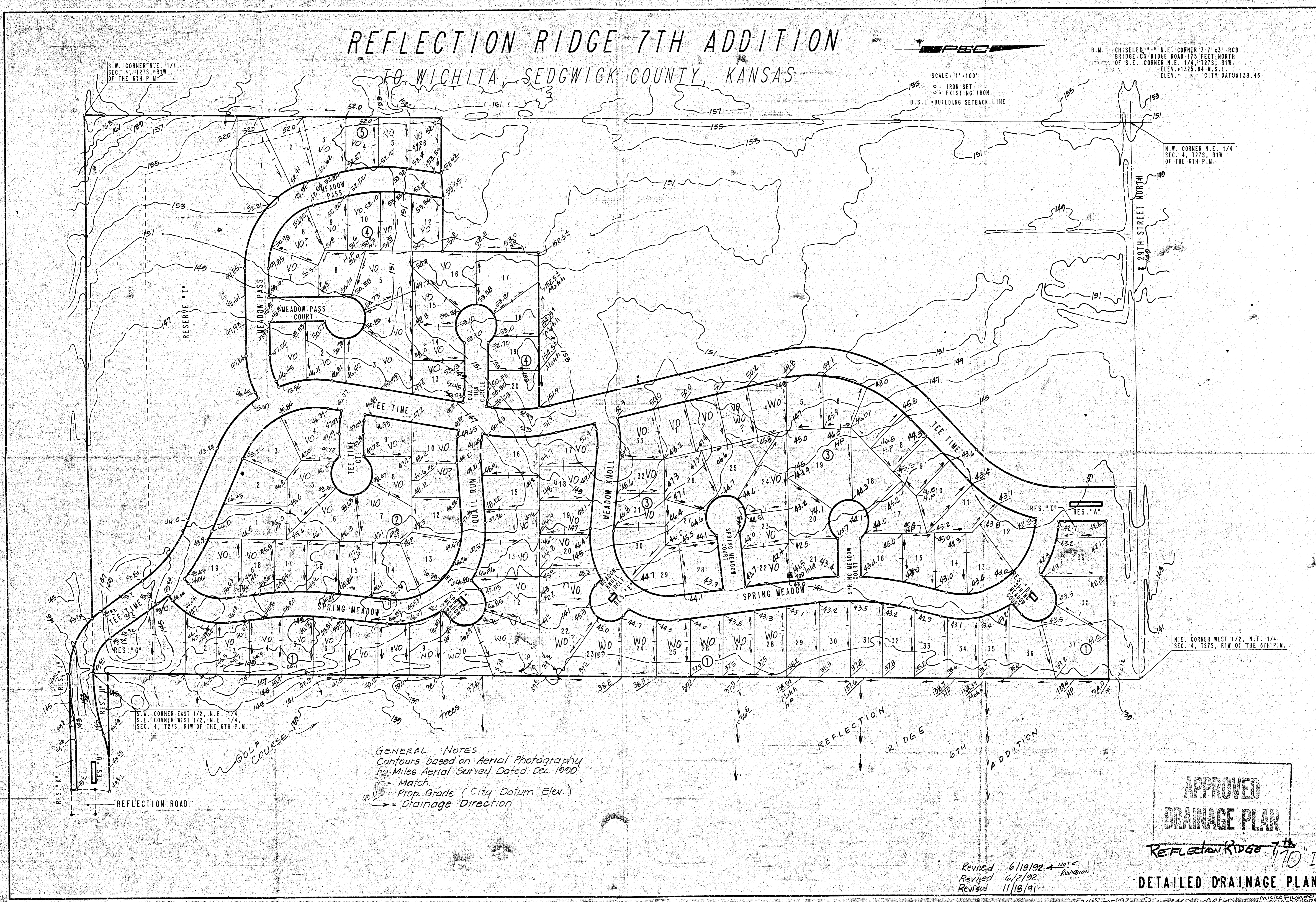
SCALE: 1"=100'  
 ○ = IRON SET  
 ⊙ = EXISTING IRON  
 B.S.L. = BUILDING SETBACK LINE

B.M. CHISELED 5'x7'x3' RCD  
 BRIDGE ON RIDGE ROAD 175 FEET NORTH  
 OF S.E. CORNER N.E. 1/4, T27S, R1W  
 ELEV. 1325.64 M.S.L.  
 CITY DATUM 138.46

S.W. CORNER N.E. 1/4  
 SEC. 4, T27S, R1W  
 OF THE 6TH P.M.

N.W. CORNER N.E. 1/4  
 SEC. 4, T27S, R1W  
 OF THE 6TH P.M.

N.E. CORNER WEST 1/2, N.E. 1/4  
 SEC. 4, T27S, R1W OF THE 6TH P.M.



**GENERAL NOTES**  
 Contours based on Aerial Photography  
 by Miles Aerial Survey Dated Dec. 1900  
 - Match  
 - Prop. Grade (City Datum Elev.)  
 - Drainage Direction

**APPROVED  
 DRAINAGE PLAN**

REFLECTION RIDGE 7TH  
 ADDITION 170' I

**DETAILED DRAINAGE PLAN**

Revised 6/19/92  
 Revised 6/2/92  
 Revised 11/18/91

24 SEPT '92 PLAT CAD WAREHO MICR OFIC 24 SEPT '92