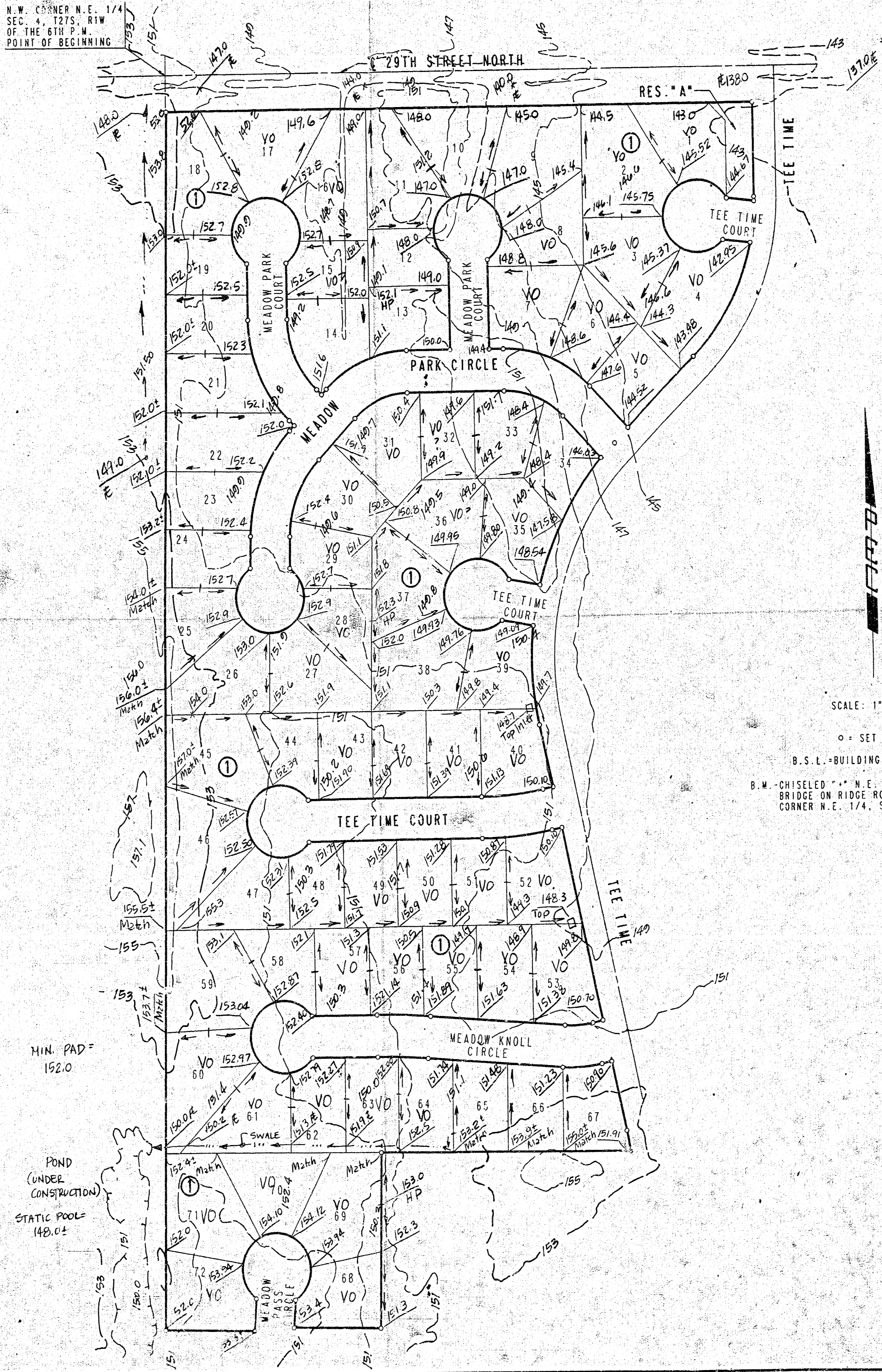


# REFLECTION RIDGE 8TH ADDITION TO WICHITA SEDGWICK, COUNTY, KANSAS

N.W. CORNER N.E. 1/4  
SEC. 4, T27S, R1W  
OF THE 6TH P.M.  
POINT OF BEGINNING



SCALE: 1" = 100'  
 ○ - SET IRON  
 B.S.L. - BUILDING SETBACK LINE  
 B.M. CHISELED "X" N.E. CORNER 3-7' X 3' RCB  
 BRIDGE ON RIDGE ROAD 175 FEET NORTH OF S.E.  
 CORNER N.E. 1/4, SEC. 4, T27S, R1W  
 ELEV. +1325.64 M.S.L.  
 ELEV. +138.46 CITY DATUM

APPROVED  
DRAINAGE PLAN

Reflection Ridge 8th

170 "J"

DETAILED DRAINAGE PLAN

6/22/92

24 SEPT 1992 RENT CARO M/L/D MICROFILMED 24 SEPT 1992