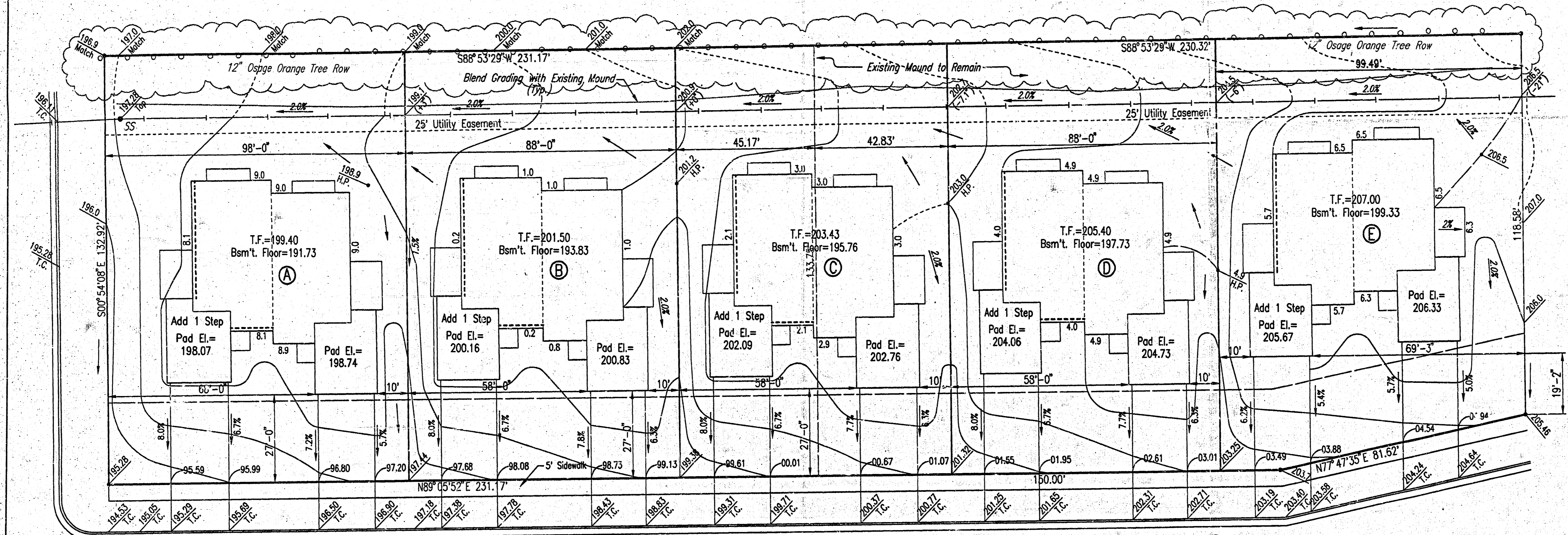


LOT 17 AND 18, BLOCK 1  
REMINGTON PLACE



LEGAL DESCRIPTIONS:

- (A) THE WEST 98 FEET OF LOT 18, BLOCK 1, REMINGTON PLACE, AN ADDITION TO WICHITA, SEDGWICK COUNTY, KANSAS.
- (B) THE EAST 88 FEET OF THE WEST 186 FEET OF LOT 18, BLOCK 1, REMINGTON PLACE, AN ADDITION TO WICHITA, SEDGWICK COUNTY, KANSAS.
- (C) LOT 18 EXCEPT THE WEST 186 FEET THEREOF, TOGETHER WITH THE WEST 42.83 FEET OF LOT 17 ALL IN REMINGTON PLACE, AN ADDITION TO WICHITA, SEDGWICK COUNTY, KANSAS.
- (D) THE EAST 88 FEET OF THE WEST 130.83 FEET OF LOT 17, BLOCK 1, REMINGTON PLACE, AN ADDITION TO WICHITA, SEDGWICK COUNTY, KANSAS.
- (E) LOT 17 EXCEPT THE WEST 130.83 FEET THEREOF, BLOCK 1, REMINGTON PLACE, AN ADDITION TO WICHITA, SEDGWICK COUNTY, KANSAS.

19TH STREET NORTH

**APPROVED  
DRAINAGE PLAN**  
sumitted 3/7/10 *set*



- LEGEND
- T.F. = TOP FOUNDATION
  - PAD = ELEVATION AT GARAGE
  - DOOR OPENING
  - STEP BRICK LEDGE
  - S.S. = SANITARY SEWER
  - WTR. = WATER LINE
  - = FLOW ARROW
  - X O.D. = POINT ELEVATION
  - O.O.T.C. = TOP CURB

SCALE: 1"=20'  
REVISED 3-7-06

*Lots 17 & 18  
Block 1  
Remington Place*

Surveyed 03-07-2006 3:07:10 PM by SW  
 Plot Scale 1/20 03-07-2006 3:08:25 PM by SW  
 25' Utility Easement, 50' Utility Easement