

FOUR-CORNER PLAN  
**REMINGTON PLACE**  
 AN ADDITION TO WICHITA, SEDGWICK COUNTY, KANSAS

AERIAL MAPPING BY M.J. HARDEN  
 DATE OF PHOTOGRAPHY 4/18/97  
 B.M. - CITY OF WICHITA TABLET 39 FEET NORTH OF NORTH 1/4 CORNER  
 SECTION 9, T27S, R2E.  
 ELEV. = 196.23 (City Datum)  
 ELEV. = 1383.63 N.G.V.D.

Center  
 Sec. 9, T27S, R2E  
 of the 6th P.M.  
 Found 1/2" Iron Pipe

N. 1/4 Corner  
 Sec. 9, T27S, R2E  
 of the 6th P.M.  
 Found 1/2" Rebar

SCALE: 1" = 100'  
 3/4" IRON PIPE W/PEC CAP UNLESS OTHERWISE NOTED  
 CM = CALCULATED FROM MEASUREMENT  
 D = DEED DIMENSION

- LEGEND**
- STORM SEWER AND INLET
  - STORM SEWER AND MANHOLE
  - SPOT ELEVATION
  - HIGH POINT ELEVATION
  - MATCH EXISTING ELEVATION

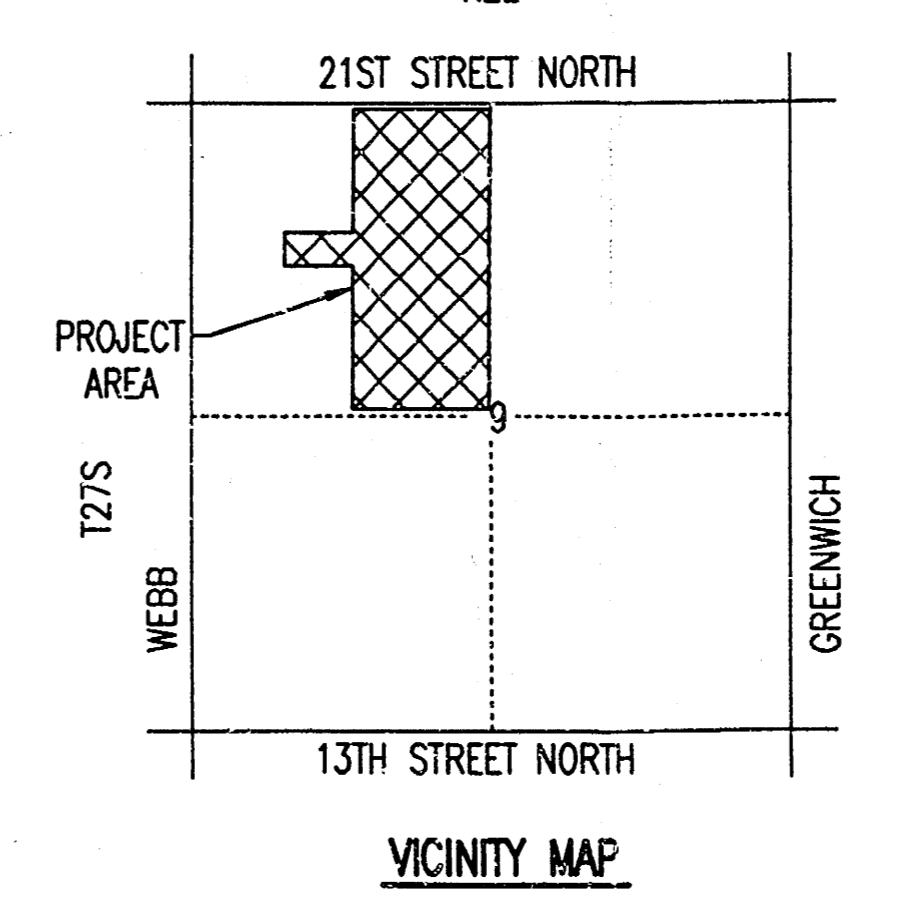
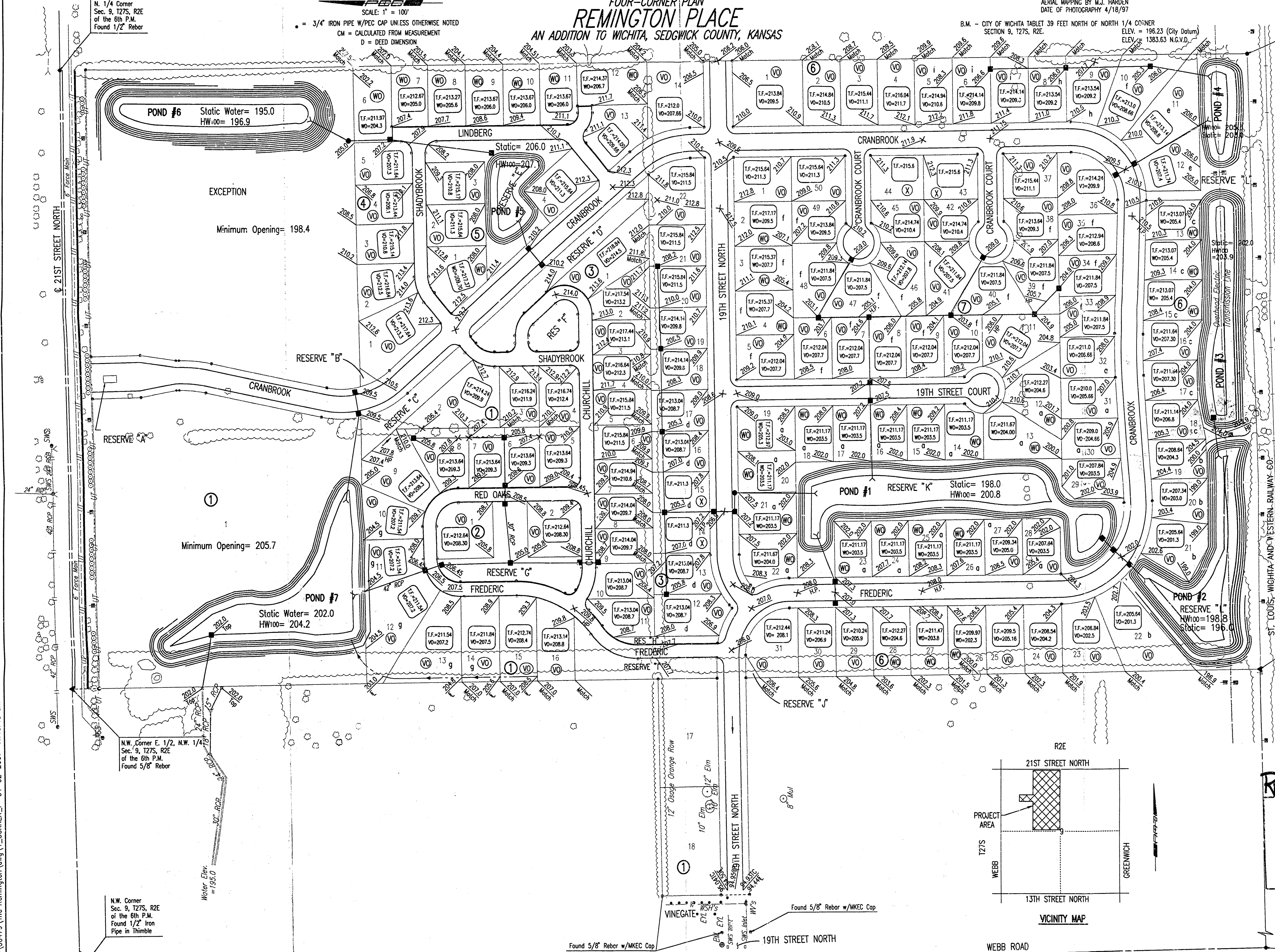
- a MINIMUM OPENING= 203.5
- b MINIMUM OPENING= 201.3
- c MINIMUM OPENING= 205.4
- d MINIMUM OPENING= 208.7
- e MINIMUM OPENING= 207.0
- f MINIMUM OPENING= 207.5
- g MINIMUM OPENING= 205.7
- h MINIMUM OPENING= 209.2
- i MINIMUM OPENING= 209.8

- Ⓢ STD. BASEMENT
- Ⓥ VIEW-OUT BASEMENT
- Ⓦ WALK-OUT BASEMENT

VO OR WO WAS CONSIDERED ACCEPTABLE  
 IF THE TOP OF FOUNDATION WAS 5' OR  
 LESS ABOVE THE PROPERTY LINE.

TOP OF FOUNDATION AND MINIMUM OPENING  
 ELEVATIONS SHOWN ARE THE MINIMUM  
 ELEVATIONS ALLOWED BASED ON OVERFLOW  
 ELEVATIONS. HIGHER ELEVATIONS MAY BE  
 REQUIRED TO ACHIEVE ADEQUATE DRAINAGE  
 AWAY FROM THE HOME.

S.W. Corner E. 1/2, N.W. 1/4  
 Sec. 9, T27S, R2E  
 of the 6th P.M.  
 Set 3/4" Iron Pipe



**REMINGTON PLACE**  
**APPROVED**  
**DRAINAGE PLAN**

West 1/4 Corner  
 Sec. 9, T27S, R2E  
 of the 6th P.M.  
 Found 1" Bar  
 in Thimble

Professional Engineering Consultants, P.A.  
 303 S. TOPERA • WICHITA, KANSAS 67202  
 316-262-2691 • FAX 316-262-3003



DSMR: SAD OPER: SAD SCALE: 1"=100.00  
 Q: 2000\0479 The Remington\ang\_v4\_CORNER\_7 04-02-2001 11:10:48 am

Revised Remington Horizontal  
 NEW DRAINAGE RULES!  
 MICCO Flumed 16 Oct 2001