

FOUR-CORNER PLAN
REMINGTON PLACE 3RD
 AN ADDITION TO WICHITA, SEDGWICK COUNTY, KANSAS

NW Corner,
 Sec. 9, T27S, R2E
 of the 6th P.M.
 Found 1/2" Iron
 Pipe in Thimble

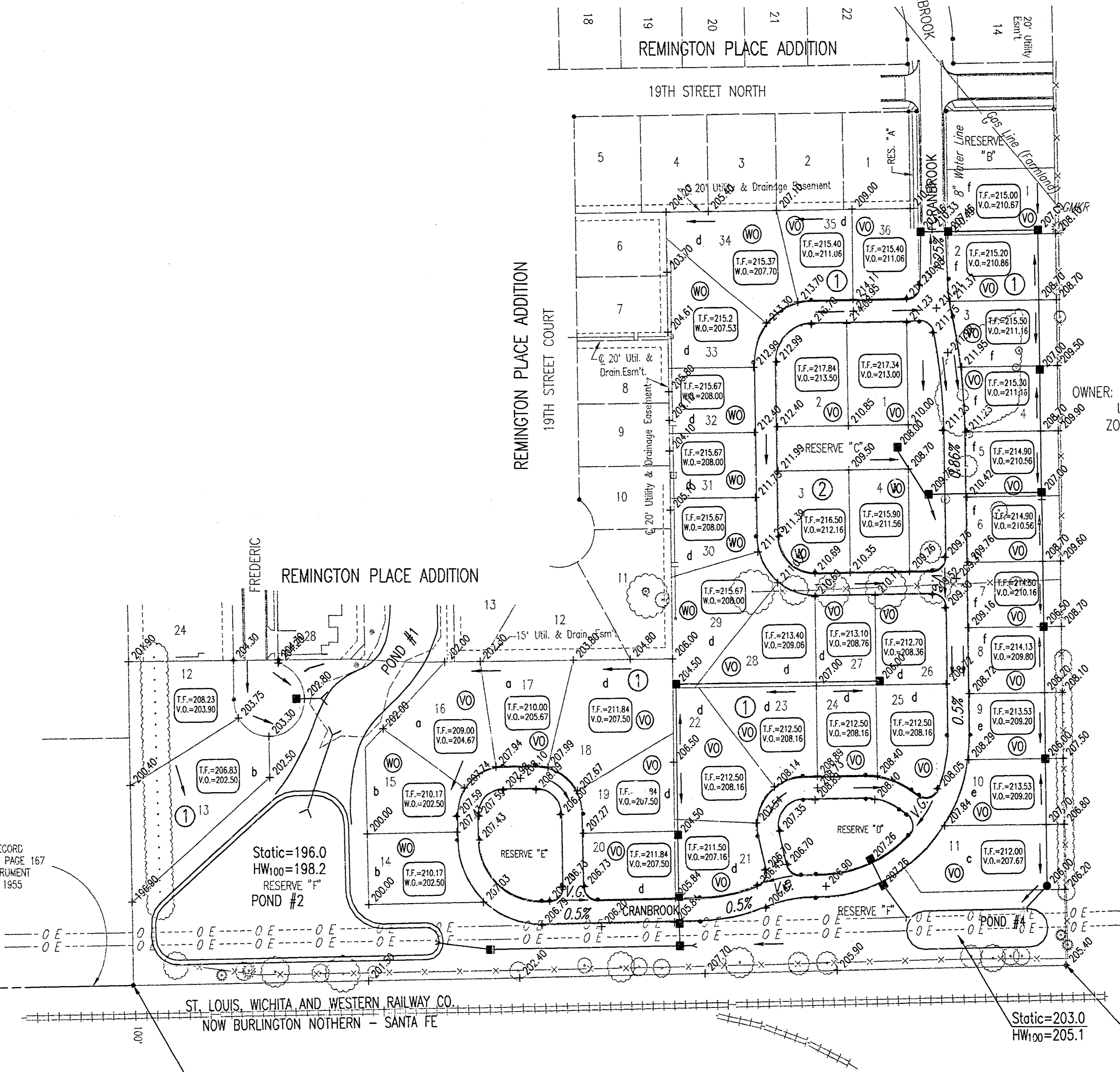
21ST STREET NORTH

WEBB ROAD

REMINGTON PLACE ADDITION

REMINGTON PLACE ADDITION

19TH STREET NORTH



ORIGINAL RECORD
 DEED BOOK 997, PAGE 167
 DATE OF INSTRUMENT
 MARCH 30, 1955

Static=196.0
 HW₁₀₀=198.2
 RESERVE "f"
 POND #2

Static=203.0
 HW₁₀₀=205.1

West 1/4 Corner,
 Sec. 9, T27S, R2E
 of the 6th P.M.
 Found 1" Bar
 in Thimble

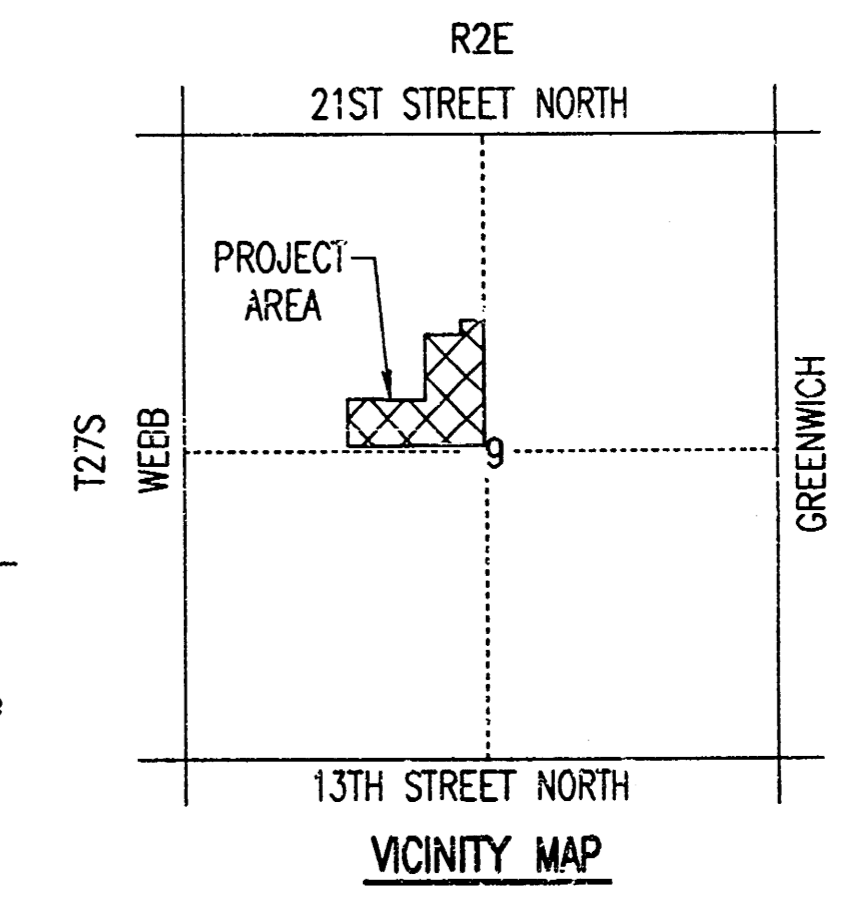
SW Corner, East 1/2, NW 1/4,
 Sec. 9, T27S, R2E
 of the 6th P.M.
 Found 3/4" Iron Pipe

SCALE: 1" = 100'
 CM = CALCULATED FROM MEASUREMENT
 D = DEED DIMENSION
 B.M. - CITY OF WICHITA TABLET 39 FEET NORTH OF NORTH 1/4 CORNER
 SECTION 9, T27S, R2E. ELEV. = 196.23 (City Datum)
 ELEV. = 1363.63 N.G.V.D.

- STORM WATER FLOW
- ⊙ VIEW-OUT BASEMENT
- ⊙ WALK-OUT BASEMENT
- STORM SEWER AND INLET
- STORM SEWER AND MANHOLE
- × SPOT ELEVATION
- HIGH POINT ELEVATION
- a MINIMUM OPENING=203.5
- b MINIMUM OPENING=201.3
- c MINIMUM OPENING=207.0
- d MINIMUM OPENING=207.5
- e MINIMUM OPENING=209.2
- f MINIMUM OPENING=209.8

OWNER: KITCH PARTNERS
 UNPLATTED
 ZONED: SF-20

**APPROVED
 DRAINAGE PLAN**



→ REVISED 3/23/05 SAW
 REVISED 1/15/04

ATTACHMENT B

Professional Engineering Consultants, P.A.
 303 S. TOPEKA • WICHITA, KANSAS 67202
 316-262-2691 • FAX 316-262-3003

*Remington Place 3rd
 Revised 3-23-05*

DSNR, SAW OPER, SCALE: 1"=100.00
 O:\2003\03341\dwg\4CORNER 03-30-2005 04:37:24 pm