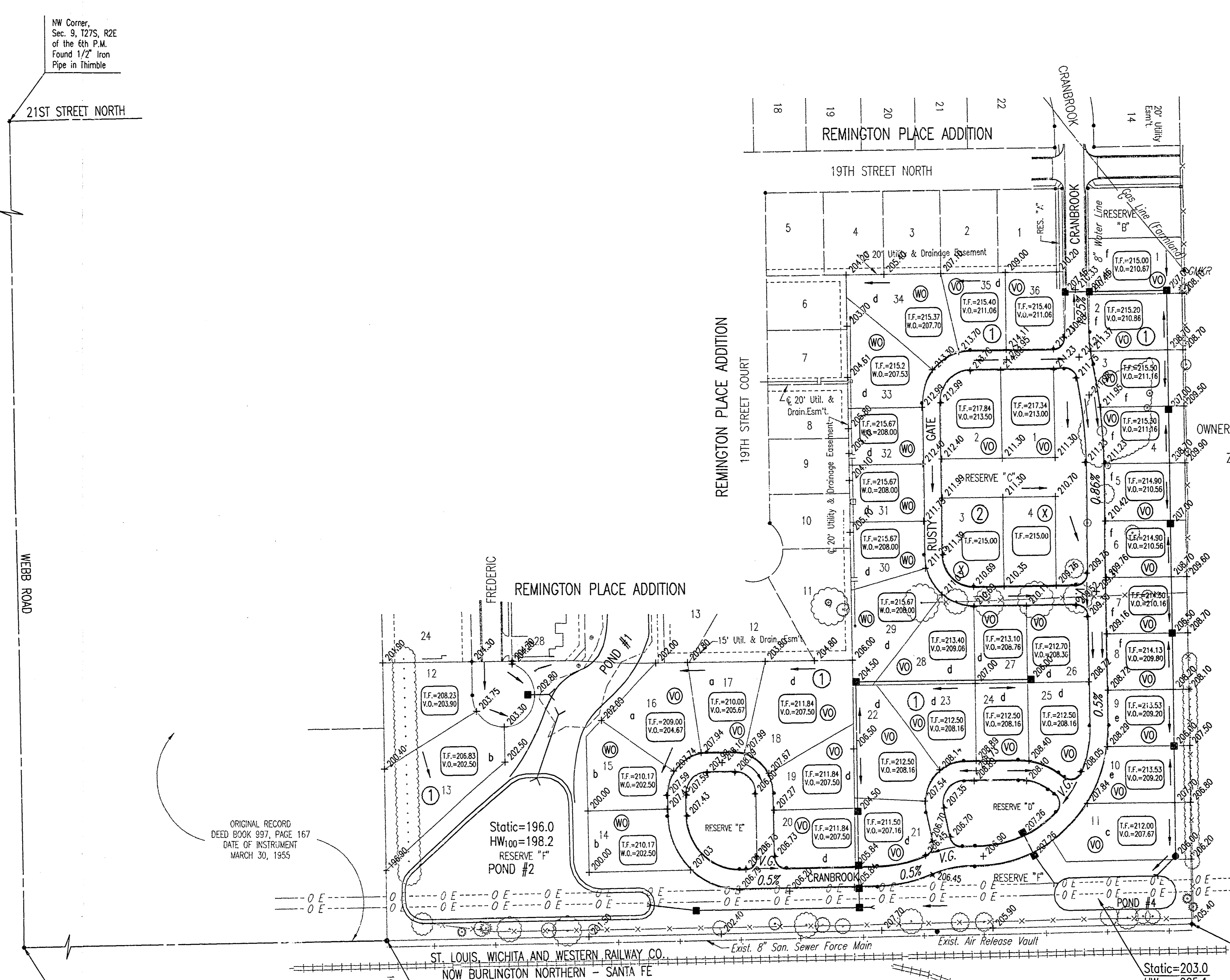


FOUR-CORNER PLAN  
**REMINGTON PLACE 3RD**  
 AN ADDITION TO WICHITA, SEDGWICK COUNTY, KANSAS

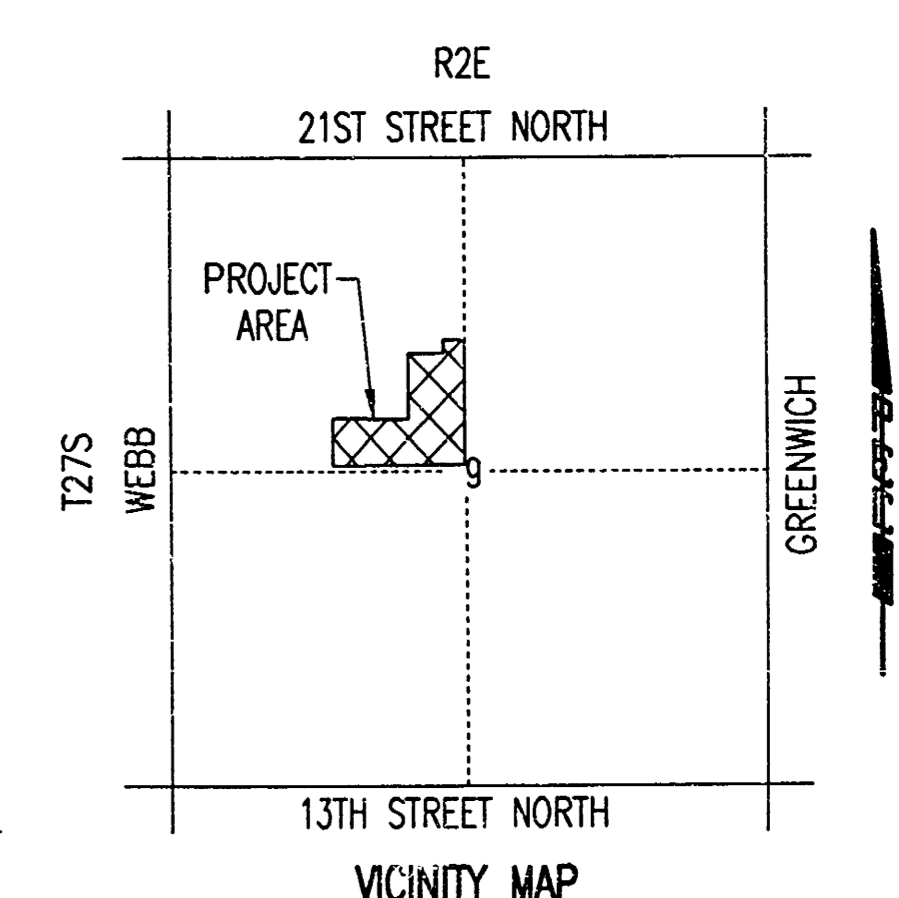


SCALE: 1" = 100'

CM = CALCULATED FROM MEASUREMENT  
 D = DEED DIMENSION  
 B.M. - CITY OF WICHITA TABLET 39 FEET NORTH OF NORTH 1/4 CORNER SECTION 9, T27S, R2E. ELEV. = 196.23 (City Datum)  
 ELEV. = 1383.63 N.G.V.D.

- STORM WATER FLOW
- VO VIEW-OUT BASEMENT
- WO WALK-OUT BASEMENT
- STORM SEWER AND INLET
- STORM SEWER AND MANHOLE
- SPOT ELEVATION
- HIGH POINT ELEVATION
- a MINIMUM OPENING=203.5
- b MINIMUM OPENING=201.3
- c MINIMUM OPENING=207.0
- d MINIMUM OPENING=207.5
- e MINIMUM OPENING=209.2
- f MINIMUM OPENING=209.8

OWNER: KITCH PARTNERS  
 UNPLATTED  
 ZONED: SF-20



ORIGINAL RECORD  
 DEED BOOK 897, PAGE 167  
 DATE OF INSTRUMENT  
 MARCH 30, 1955

Static=196.0  
 HW<sub>100</sub>=198.2  
 RESERVE "F"  
 POND #2

Static=203.0  
 HW<sub>100</sub>=205.1

Center Sec. 9,  
 T27S, R2E  
 of the 6th P.M.  
 Found 1/2" Iron Pipe

**APPROVED  
 DRAINAGE PLAN**

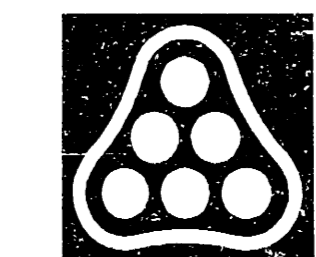
REVISED 1/15/04

DSNR: BDB OPER. SCALE: 1"=100.00  
 G:\2003\03583\000\4CORNER 11-08-2004 01:11:54 pm

West 1/4 Corner,  
 Sec. 9, T27S, R2E  
 of the 6th P.M.  
 Found 1" Bar  
 in Thimble

SW Corner, East 1/2, NW 1/4,  
 Sec. 9, T27S, R2E  
 of the 6th P.M.  
 Found 3/4" Iron Pipe

No.	Revision	By	Date
REMINGTON PLACE 3RD			
<b>4-CORNER LOT GRADING PLAN</b> (FOR INFORMATION ONLY)			
JAMES L. ARMOUR, P.E. - ACTING CITY ENGINEER CITY OF WICHITA PROJECT NO. 472-83943			
<b>Professional Engineering Consultants, P.A.</b> 303 S. TOPKA • WICHITA, KANSAS 67202 316-262-2491 • FAX 316-262-3003			
Designed by	BDB	Job No.	35-03583-000
Drawn by	BJS	Date	AUGUST 2003
			Sheet 4 of 58



PLATT CARD NO. 11000 9/1000 2003