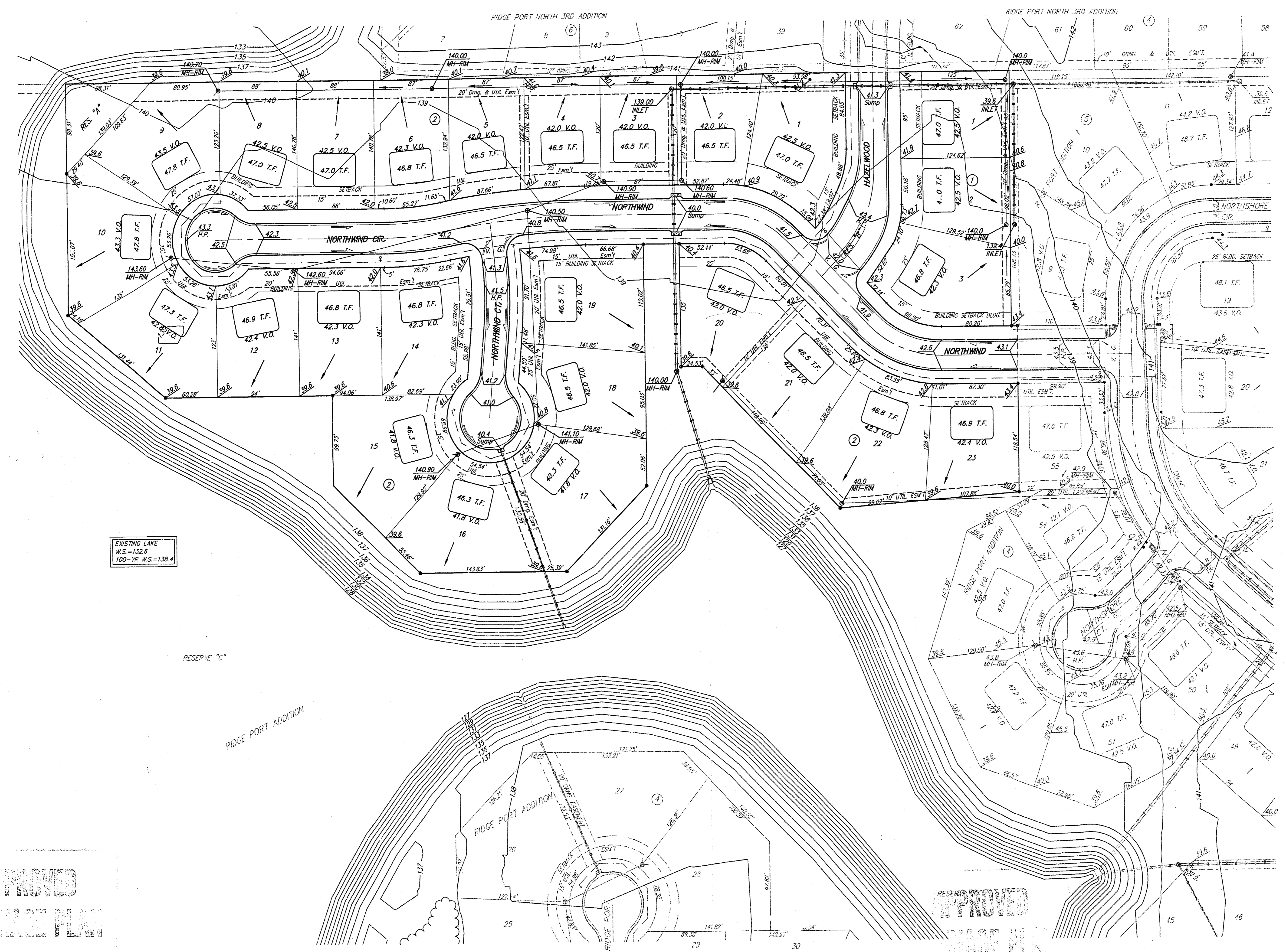


SCALE: 1" = 60'
 • = Iron



EXISTING LAKE
 W.S. = 132.6
 100-YR W.S. = 138.4

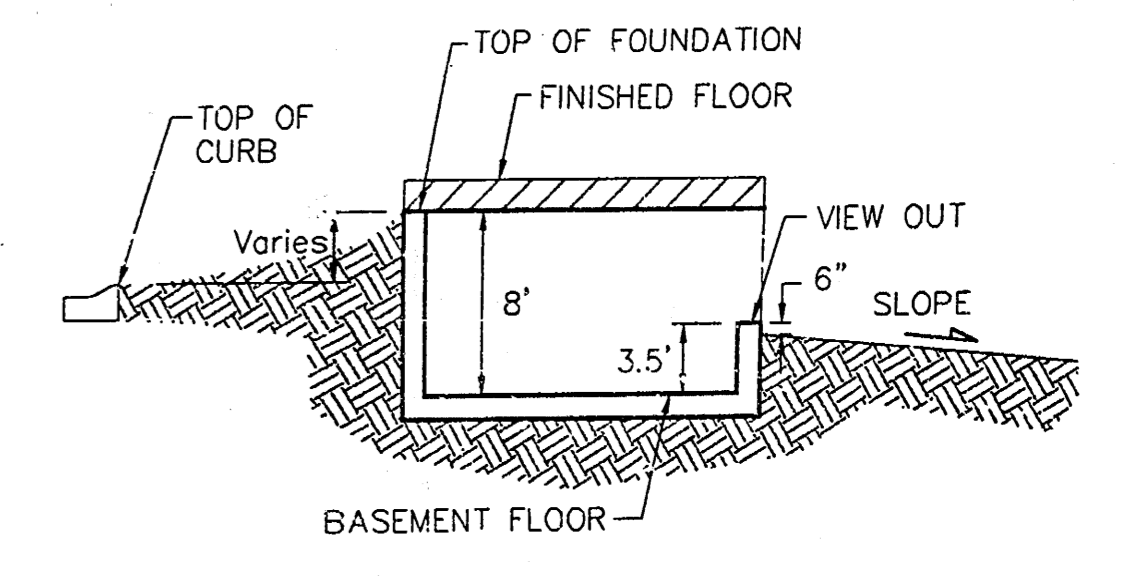
RESERVE "C"

APPROVED
 GRADING PLAN

RESERVE
 APPROVED
 GRADING PLAN

NOTES:
 Proposed Top of Foundation Elevations Are Shown On Plans. Contractor to Set Finished Floor Elevations.
 All Street Elevations Shown on Plans Are for Top of Curb (Full-Height). Typically Roll-Type Curbs are Constructed. Deduct 0.25' From Top of Curb (Full-Height).
 This Grading Plan is Designed with View-Out Basements. Elevations Shown at Rear of House (XXX.V.O.) Are for Minimum Opening.

BENCHMARKS:
 City Disc 45' North of 1/4 Corner,
 1/2 Mile East of Ridge Road on
 29th St. North.
 Elev. = 141.07 City Datum
 City Disc at S.W. Corner of R.C.B.C.
 for Big Slough at Ridge Road
 Elev. = 144.22 City Datum



TYPICAL VIEW OUT
 NO SCALE

MINIMUM BUILDING PAD ELEVATION FOR LOWEST OPENING TO THE STRUCTURES		ELEVATION	
BLOCK	LOT(S)	CITY DATUM	MSL
B	9-23	138.6	1327.0

NOTES:
 A MASTER GRADING PLAN FOR DRAINAGE HAS BEEN DEVELOPED FOR THIS SUBDIVISION AND IS ON FILE WITH THE CITY OF WICHITA, KANSAS. CONSTRUCT OF RESIDENTIAL STRUCTURES MUST FOLLOW THE MASTER SITE GRADING PLAN ELEVATIONS WHICH ARE HIGHER THAN THE MINIMUM PAD REQUIREMENT.
 ALL DRAINAGE EASEMENTS, RIGHTS-OF-WAY, OR RESERVES SHALL REMAIN AT ESTABLISHED GRADES OR AS MODIFIED WITH THE APPROVAL OF THE CITY ENGINEER OF THE CITY OF WICHITA, KANSAS. NO OBSTRUCTIONS WHICH IMPEDE THE FLOW OF THIS DRAINAGE SYSTEM SHALL BE ALLOWED.

RIDGE PORT 3RD ADDITION GRADING PLAN
 WICHITA, KANSAS

BAUGHMAN COMPANY P.A.
 ENGINEERING, SURVEYING, & PLANNING
 318-262-7271 • 315 ELLIS • WICHITA, KANSAS 67211

DESIGN	NEW	DRAWN	JAK	APPROVED	DATE	11/14/00	SCALE	1" = 60'
PROJECT NUMBER								SHEET
								1
								OF
								1

Ridgeport 3rd