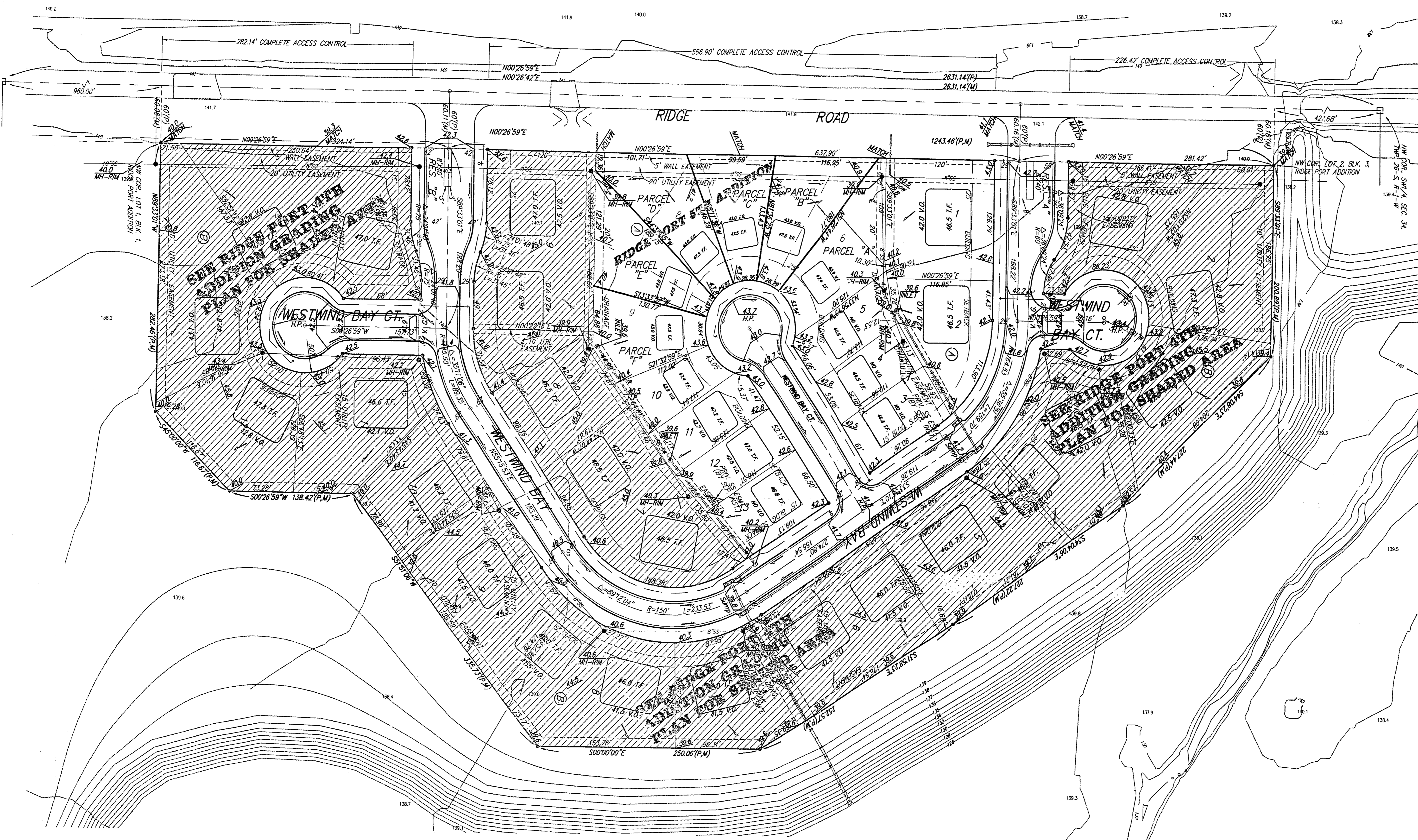




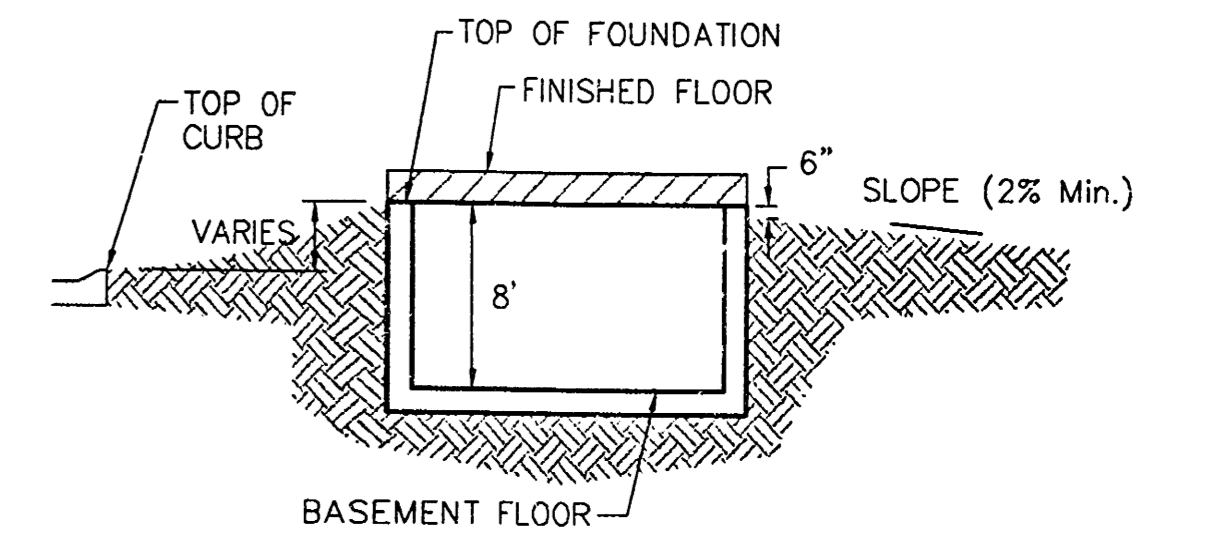
SCALE: 1" = 60'
• = Iron



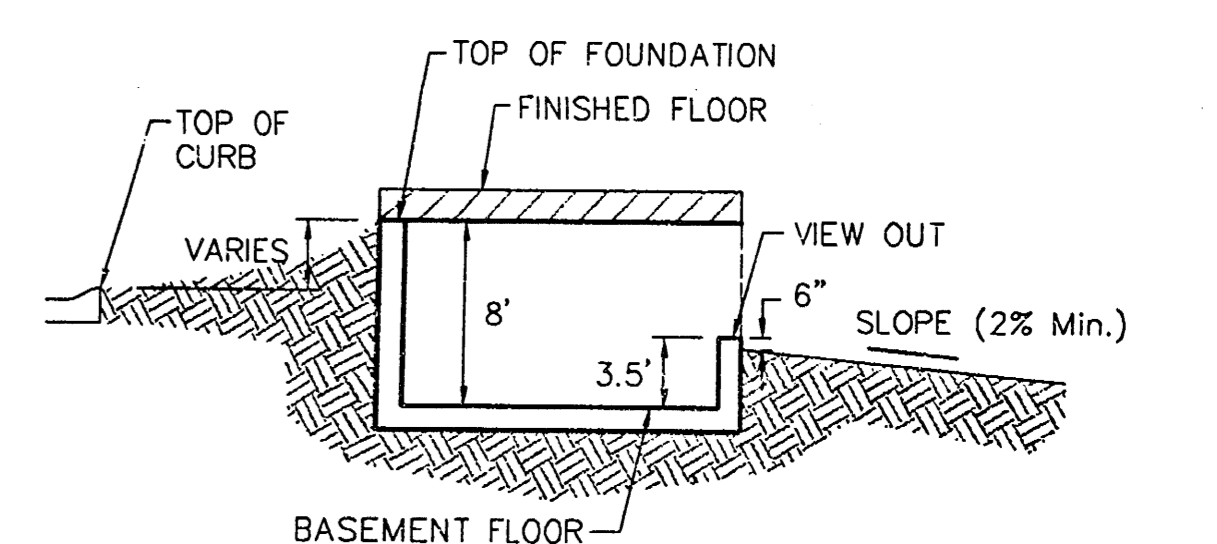
NOTES:

Proposed Top of Foundation Elevations Are Shown On Plans. Contractor to Set Finished Floor Elevations.
All Street Elevations Shown on Plans Are for Top of Curb (Full-Height).
This Grading Plan is Designed with View-Out & Walk Basements. Elevations Shown at Rear of House (XX.X V.O. or XX.X H.O.) Are for Minimum Opening.

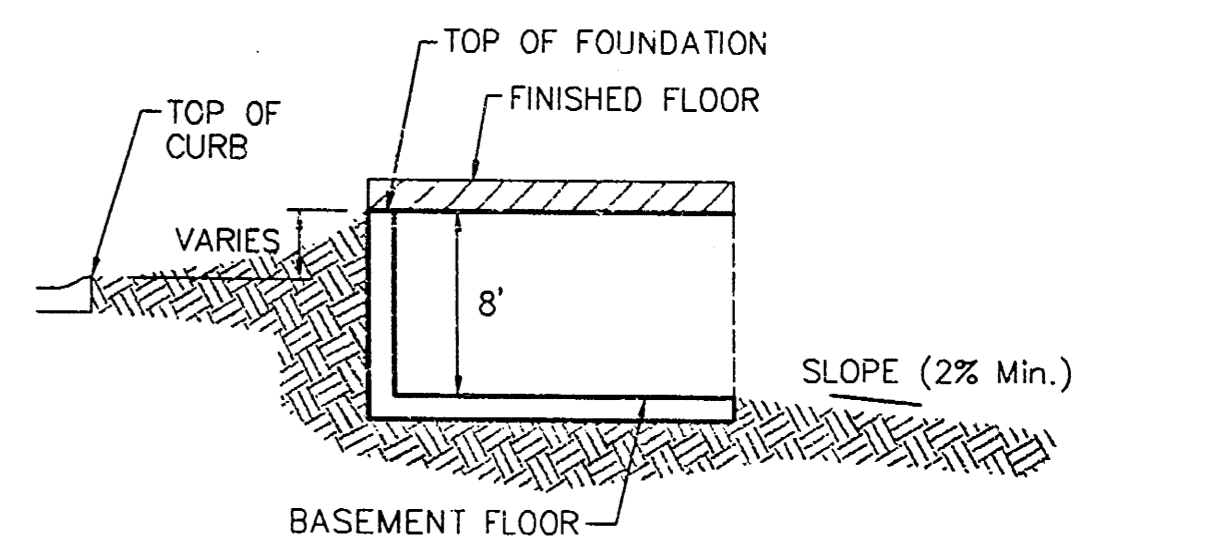
* Denotes Extra-Deep Foundation May be Required to Reach Existing Grade.



TYPICAL NON-VIEW OUT DETAIL
NO SCALE



TYPICAL VIEW OUT DETAIL
NO SCALE



TYPICAL WALK OUT DETAIL
NO SCALE

APPROVED
DRAINAGE PLAN

MINIMUM BUILDING PAD ELEVATIONS FOR LOWEST OPENING TO THE STRUCTURES

LOT	BLOCK	ELEVATION
9-23	B	CITY DATUM 139.6 NGVD 1327.00

REVISED REAR YARD GRADES, PARCELS "A" - "D" 5/11/05 BY AEG

RIDGE PORT 5TH ADD.
GRADING PLAN
WICHITA, KANSAS

BAUGHMAN COMPANY P.A.
ENGINEERING, SURVEYING, & PLANNING
318-262-7271 • 315 ELLIS • WICHITA, KANSAS 67211

PROJECT NUMBER: _____ SHEET **1** OF **1**

DESIGN: NEW DRAWN: AEG APPROVED: _____ DATE: 3/04 SCALE: 1"=60'