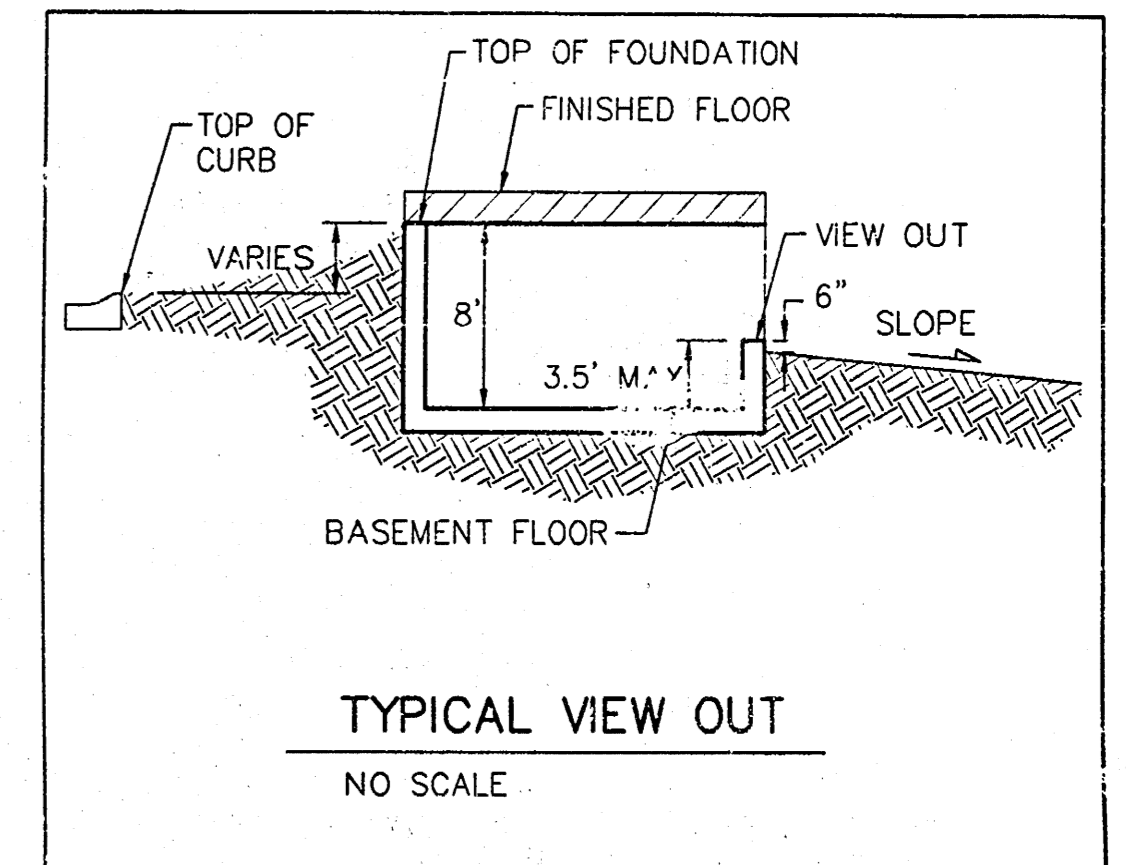


SCALE: 1" = 60'  
 • = Iron



**NOTE:**  
 Proposed top of foundation elevations are shown on plans.  
 Contractor to set finish floor elevation.  
 All street elevations shown on plans are for top of curb (full height).  
 View-out elevations are denoted as XX.X' V.O.  
 Additional fill or deep footings may be required for pad elevations denoted with an asterisk (\*).

**BENCHMARK:**  
 City Disc at the SW Corner of R.C.B. for Big Slough AR  
 Ridge Road  
 Elev. = 144.22 City Datum (1331.62 NGVD)

**APPROVED  
 DRAINAGE PLAN**

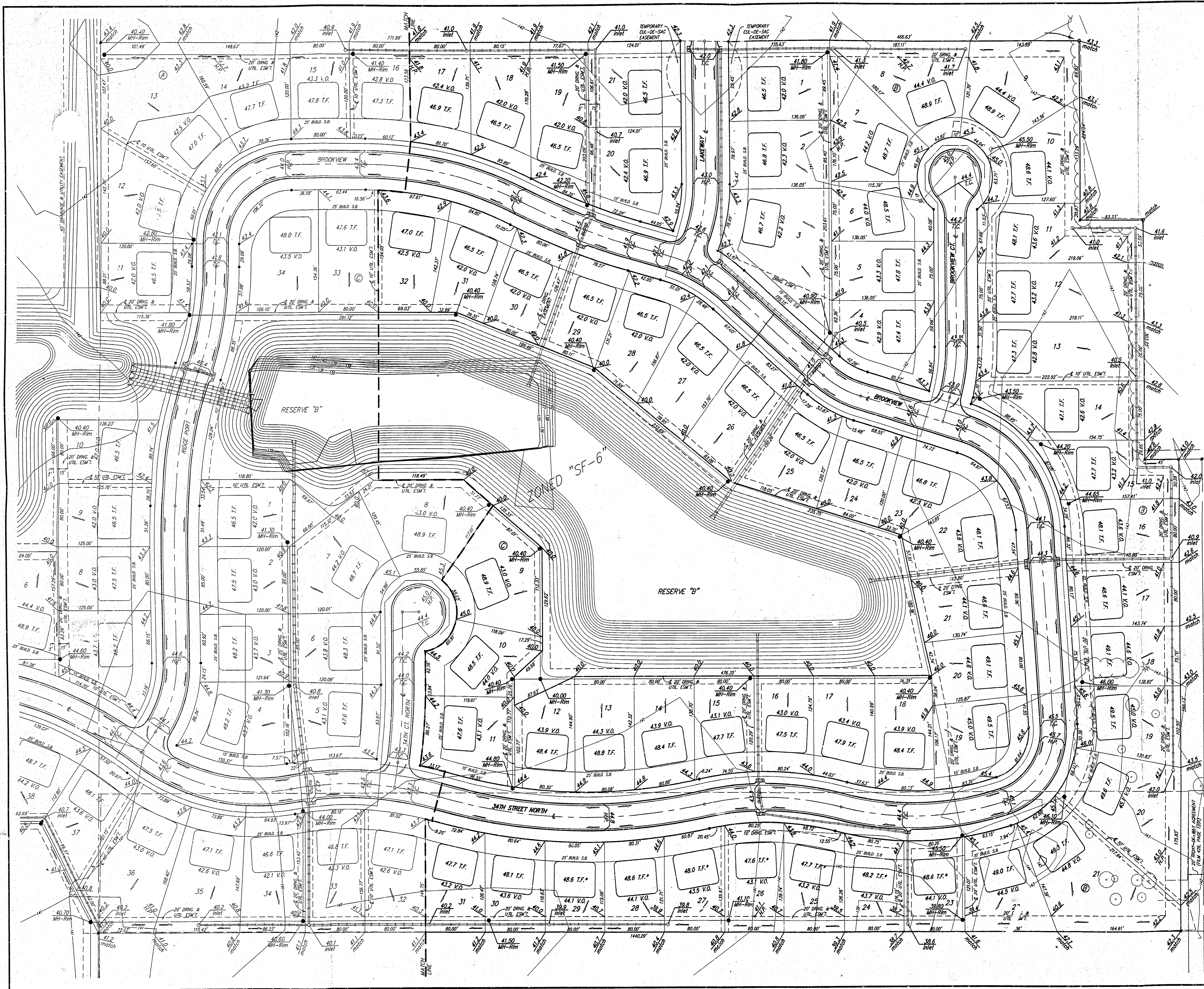
**NOTE:**  
 A master grading plan for drainage has been developed for this subdivision and is on file with the City of Wichita, Kansas. All drainage easements, rights-of-way, or reserves shall remain at established grades or as modified with the approval of the city engineer of the City of Wichita, Kansas. No obstructions which impede the flow of this drainage system shall be allowed.

**RIDGE PORT NORTH 4TH ADDITION  
 GRADING PLAN  
 WICHITA, KANSAS**

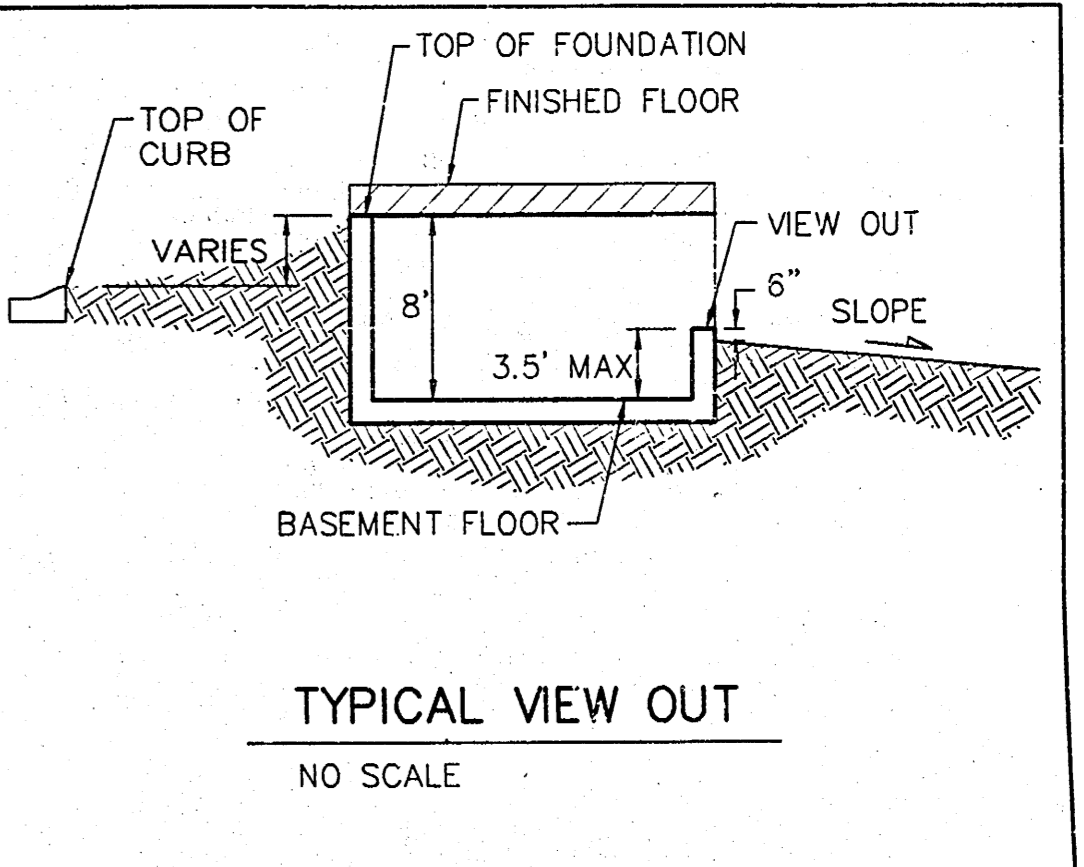
**BAUGHMAN COMPANY P.A.**  
 ENGINEERING, SURVEYING, & PLANNING  
 318-282-7271 • 315 ELLIS • WICHITA, KANSAS 67211

DESIGN	DRAWN	APPROVED	DATE	SCALE	SHEET
	BLC		3/12/2001	NOTED	1 OF 2

NEW DRAWING RULES!



SCALE: 1" = 60'  
 • = Iron



**NOTE:**  
 Proposed top of foundation elevations are shown on plans.  
 Contractor to set finish floor elevation.  
 All street elevations shown on plans are for top of curb (full height).  
 View-out elevations are denoted as XX.X V.O.  
 Additional fill or deep footings may be required for pad elevations denoted with an asterisk (\*).

**BENCHMARK:**  
 City Disc at the SW Corner of R.C.B.C. for Big Slough AR  
 Ridge Road  
 Elev. = 144.22 City Datum (1331.62 NGVD)

**NOTE:**  
 A master grading plan for drainage has been developed for this subdivision and is on file with the City of Wichita, Kansas.  
 All drainage easements, rights-of-way, or reserves shall remain at established grades or as modified with the approval of the city engineer of the City of Wichita, Kansas. No obstructions which impede the flow of this drainage system shall be allowed.

**RIDGE PORT NORTH 4TH ADDITION**  
**GRADING PLAN**  
 WICHITA, KANSAS

**BAUGHMAN COMPANY P.A.**  
 ENGINEERING, SURVEYING, & PLANNING  
 316-262-7271 • 315 ELLIS • WICHITA, KANSAS 67211

PROJECT NUMBER		SHEET	
		<b>2</b>	
DESIGN	DRAWN	APPROVED	DATE
	BLC		3/12/2001
		SCALE	NOTED
			<b>2</b>

PROPORTION: GRADING