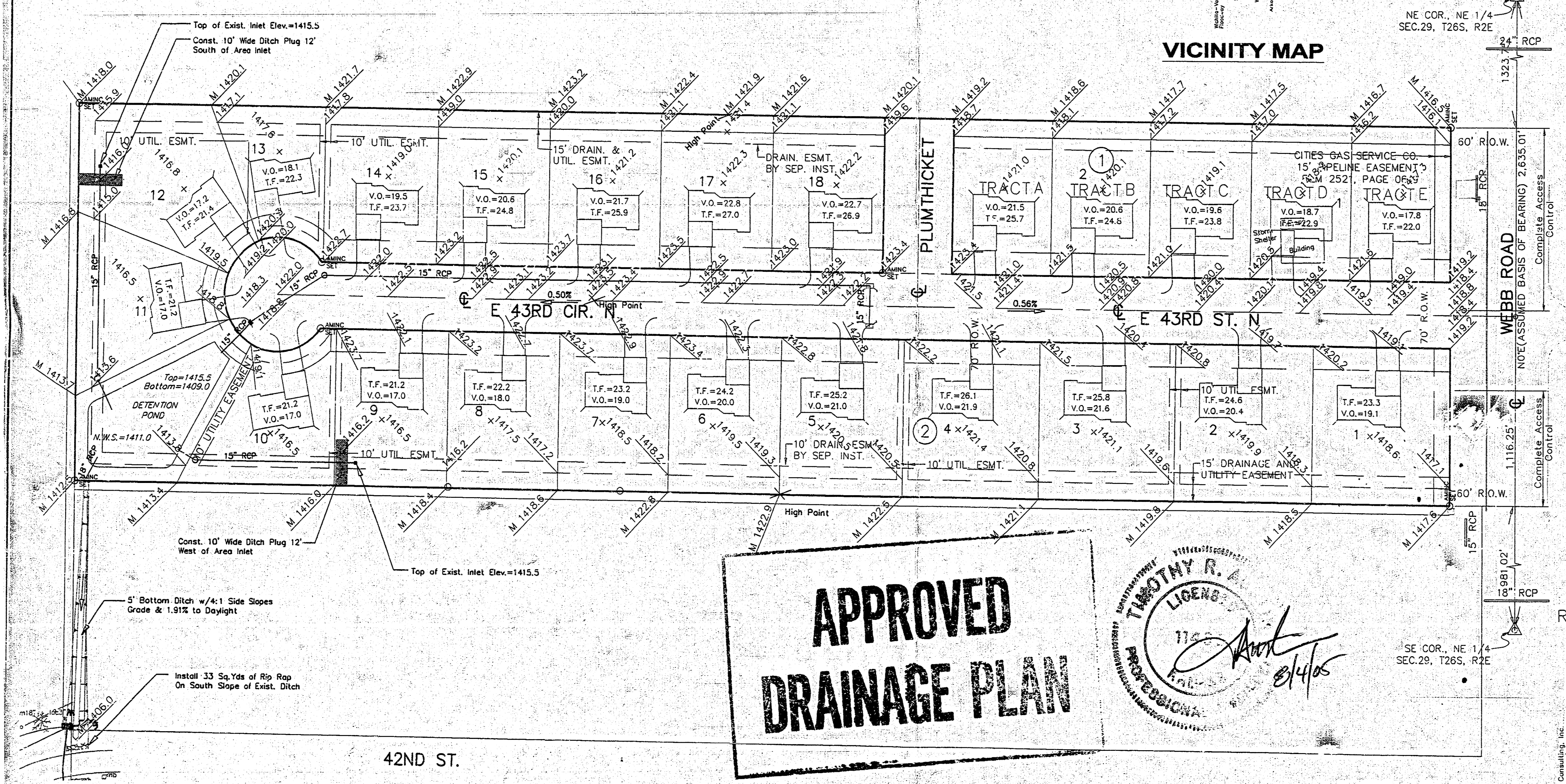
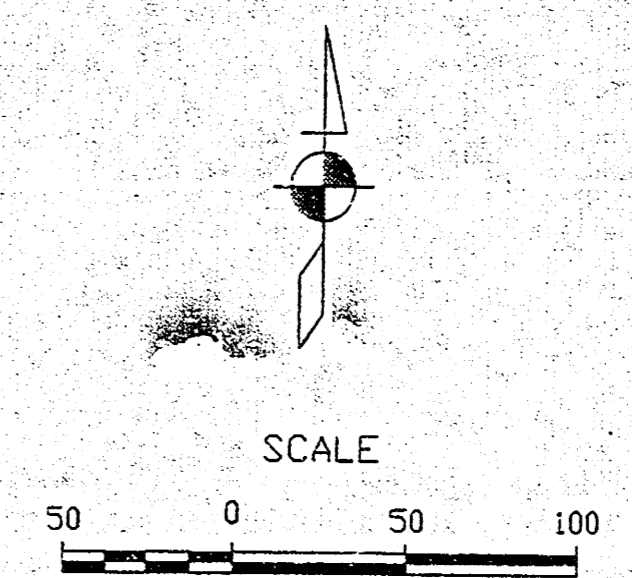
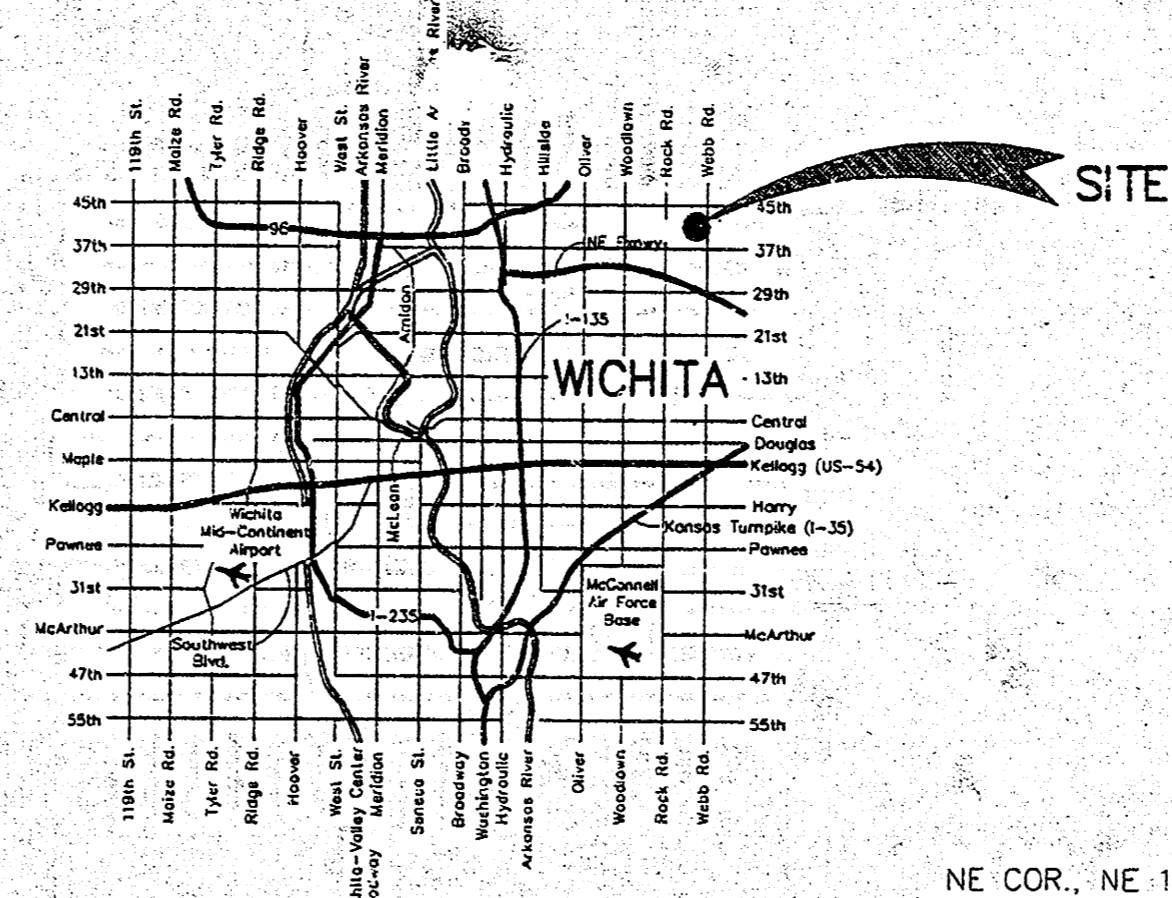


# SAND PLUM ADDITION DRAINAGE PLAN WICHITA, SEDGWICK COUNTY, KANSAS

## LEGEND

- = Section Corner
  - = 5/8" Rebar (found)
  - = Bell Pedestal
  - = Cedar
  - = Contour Elevation
  - = Fire Hydrant
  - = Fence
  - = Gas
  - = Guy Anchor
  - = Mailbox
  - = Power Pole
  - = Sign
  - = Tree
  - = Match Existing Grade
  - = Proposed Grade
  - V.O. = 21.6 = Proposed View Out Elevation
  - T.F. = 25.8 = Proposed Top of Foundation Elevation
- All Lots are View Out



**APPROVED  
DRAINAGE PLAN**

THOMAS R. A.  
LICENSED PROFESSIONAL ENGINEER  
KANSAS  
11/25/05  
8/4/05

SAND  
PLUM  
ADDN

REVISED-8/04/05

FILENAME: 02153-02/grading-rwd.dwg

**ENGINEERING SERVICES**  
142 N. Crossland - Wichita, KS 67202  
316/265-2870 Fax 316/265-2839