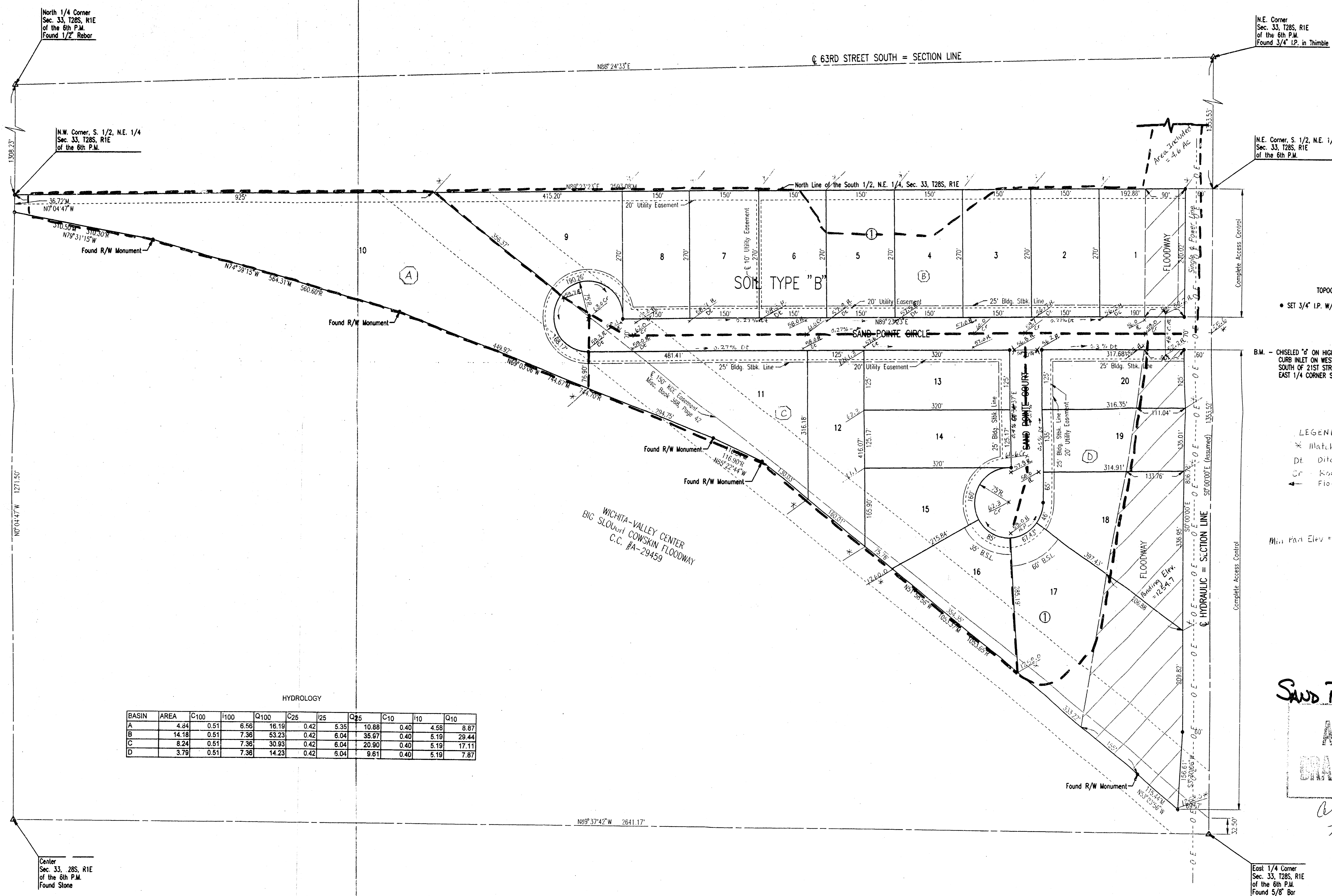


# SAND POINTE ADDITION TO SEDGWICK COUNTY, KANSAS DRAINAGE PLAN



HYDROLOGY

BASIN	AREA	C100	I100	Q100	C25	I25	Q25	C10	I10	Q10
A	4.84	0.51	6.56	16.19	0.42	5.35	10.88	0.40	4.58	8.87
B	14.18	0.51	7.36	53.23	0.42	6.04	35.97	0.40	5.19	29.44
C	8.24	0.51	7.36	30.83	0.42	6.04	20.80	0.40	5.19	17.11
D	3.79	0.51	7.36	14.23	0.42	6.04	9.61	0.40	5.18	7.87

SCALE: 1"=100'  
TOPOGRAPHY - APRIL 1998  
• SET 3/4" I.P. W/ CAP, UNLESS NOTED OTHERWISE  
M = MEASURED  
R = RECORD

B.M. - CHISELED "d" ON HIGH EDGE OF CURB AT S.E. CORNER OF CURB INLET ON WEST SIDE OF MAZE ROAD, 0.44 MILES SOUTH OF 21ST STREET NORTH, 900E FEET NORTH OF EAST 1/4 CORNER SEC. 7, T27S, R1W OF THE 6TH P.M. ELEV.=161.10 CITY DATUM

LEGEND  
X Match Existing Elevation  
Dt Ditch  
CR Road  
→ Flow Direction

Min. Pan Elev = 1256.7

**SAND POINTE ADDN**  
**APPROVED**  
**DRAINAGE PLAN**  
*Approved by  
the County*

DSNP: BEB OPER: KER SCALE: 1"=100' 00  
01/1997/87025/grading 07-23-1998 01:21:55 pm