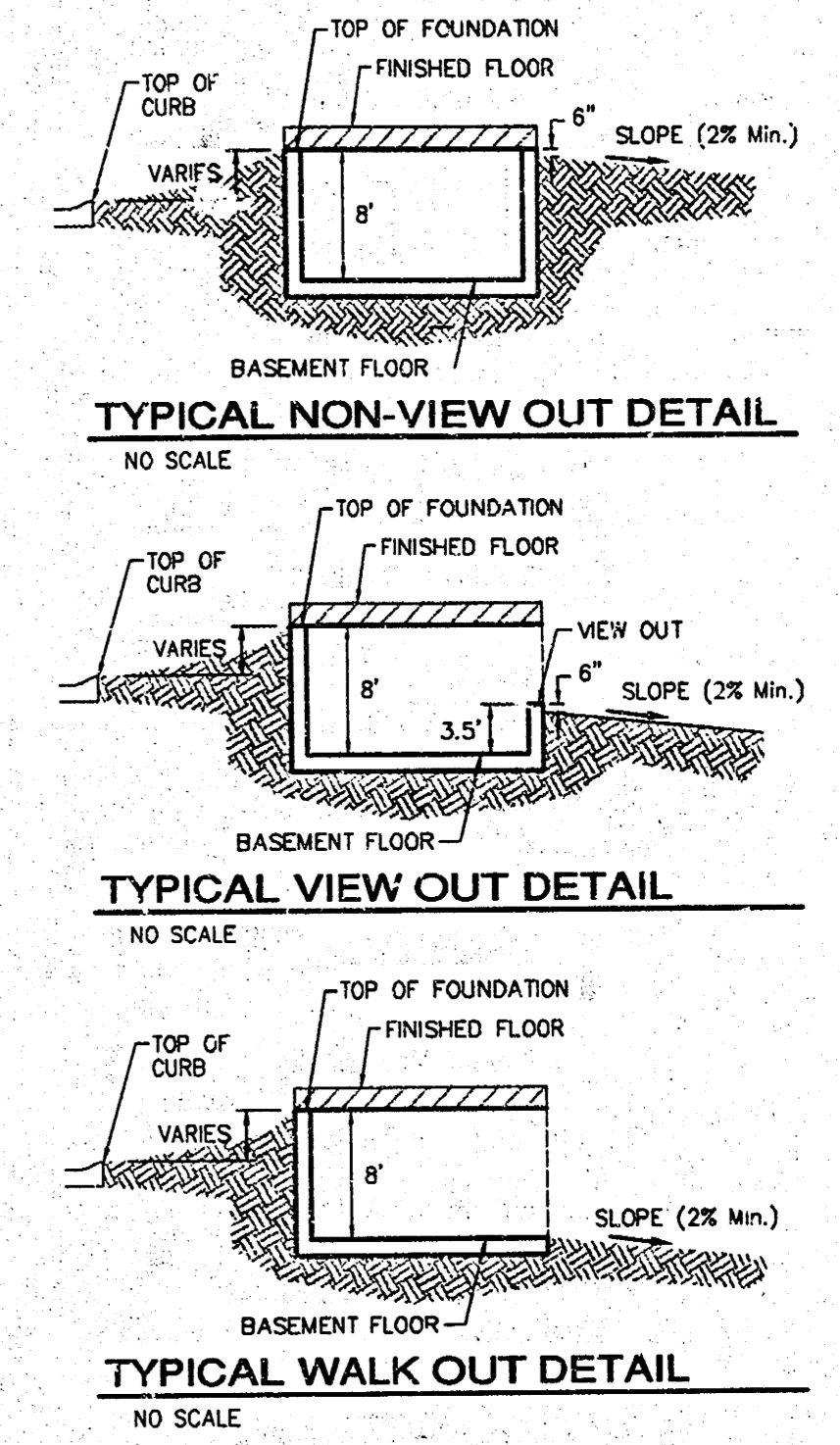


BENCHMARKS:
 RP Spike in N. Face of FP in N. R/W of Maple H. of Nineiron. Elev. = 177.01 (City Datum)
 "C" Cut center of north Headwall of RCBC in N. R/W of Maple 570' East of centerline of City View. Elev. = 187.91 (City Datum)

Scale: 1" = 60'

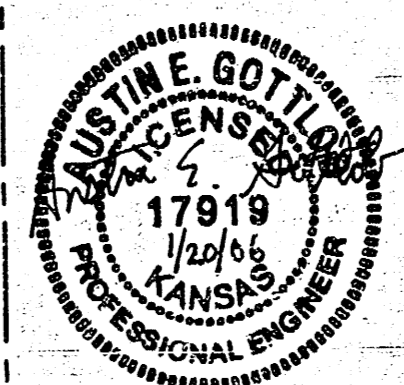


- NOTES:**
1. PROPOSED TOP OF FOUNDATION ELEVATIONS ARE SHOWN ON PLANS. CONTRACTOR TO SET FINISHED FLOOR AND GARAGE FLOOR ELEVATIONS. ALL STREET ELEVATIONS SHOWN ON PLANS ARE FOR TOP OF CURB (FULL-HEIGHT).
 2. THIS GRADING PLAN IS DESIGNED WITH VEE-CUTS AND WALK-OUTS. ELEVATIONS SHOWN AS XXX.X V.O. DEPICT VEE-CUT STRUCTURES. ELEVATIONS SHOWN AS XXX.X W.O. DEPICT WALK-OUT STRUCTURES.
 3. ALL LOTS SHALL MEET MINIMUM PAD REQUIREMENT AS SHOWN ON THE RECORDED PLAT.

| MINIMUM BUILDING PAD ELEVATIONS FOR LOWEST OPENING TO THE STRUCTURES | | | |
|--|-------|------------|---------|
| LOT | BLOCK | ELEVATION | |
| | | CITY DATUM | NGVD29 |
| 1-24 | D | 177.20 | 1364.60 |
| 1-7 | E | 180.50 | 1347.90 |

4. LOT DIMENSIONS HAVE BEEN OMITTED ON THIS PLAN. REFER TO THE RECORDED PLAT FOR FINAL DIMENSION, EASEMENT, & BUILDING SETBACK INFORMATION.
5. HOUSE PAD ELEVATIONS DEPICTED WITH BOLD OUTLINES WITH TOP OF FOUNDATIONS SHOWN AS XXX.X V.O. INDICATE THAT DEEP FOOTINGS OR DEEP FOUNDATIONS MAY BE REQUIRED.
6. A DRAINAGE PLAN HAS BEEN DEVELOPED FOR THIS SUBDIVISION AND IS ON FILE WITH THE CITY OF WICHITA, KANSAS. DRAINAGE INTENT SHALL REMAIN AS DEPICTED OR AS MODIFIED WITH THE APPROVAL OF THE CITY ENGINEER OF THE CITY OF WICHITA, KANSAS. NO OBSTRUCTIONS WHICH IMPEDE THE FLOW OF THIS DRAINAGE PLAN SHALL BE ALLOWED.
7. ALL ELEVATIONS SHOWN ARE CITY OF WICHITA DATUM.

APPROVED DRAINAGE PLAN



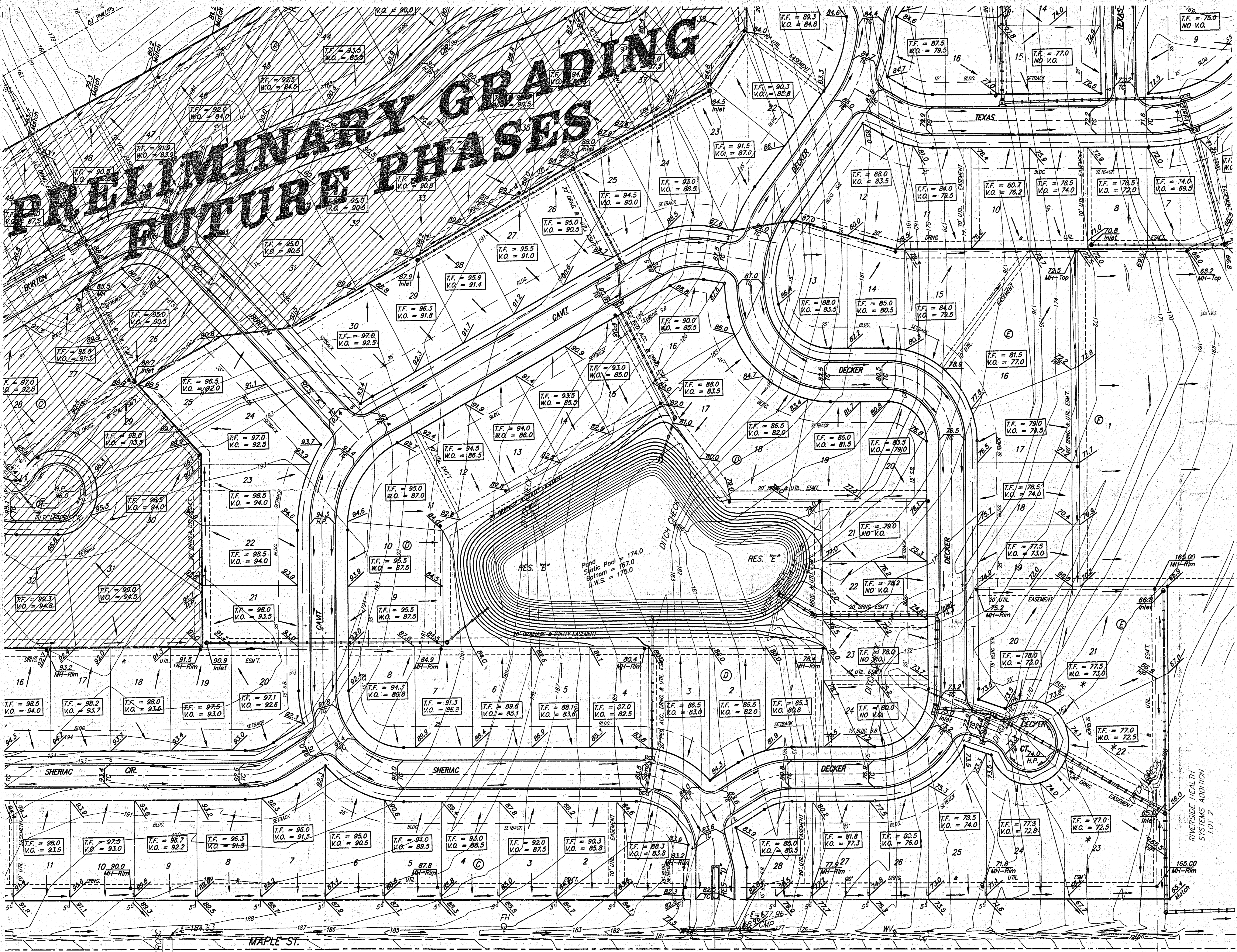
SHADOW WOODS ADDITION
MASTER GRADING PLAN
 WICHITA, KANSAS
ED BAUGHMAN COMPANY P.A.
 ENGINEERING, SURVEYING, & PLANNING
 316-292-2271 • 315 ELLIS • WICHITA, KANSAS 67211

REVISED Ph. 3 Grades As-Built 1/8/06 by AEG
 REVISED SE Corner GRADE LOT 17, D BY MAW PER AG 12-14-05

REVISED Ph. 3 GRADES LOTS 1-18, A; 1-9, E
 10/19/05 BY AEG
 REVISED Ph. 3 GRADES FINALIZED 9/18/05 BY AEG
 REVISED Ph. 2 GRADES FINALIZED 12/14/04 BY AEG

REVISED Ph. 4 GRADES FINALIZED 10/15/04 BY AEG
 REVISED Ph. 1 GRADES 10/9/03 BY AEG PER NEW
 REVISED NORTH P.L. & ESMY GRADES 7/15/03 BY SMD PER NEW
 REVISED SOUTH R/W GRADES 6/2, 33 BY AEG

| | | | | | |
|--------|-------|----------|----------|-------|--------|
| DESIGN | DRAWN | APPROVED | DATE | SCALE | SHEET |
| | SCL | | 03/13/03 | NOTE | 1 OF 4 |

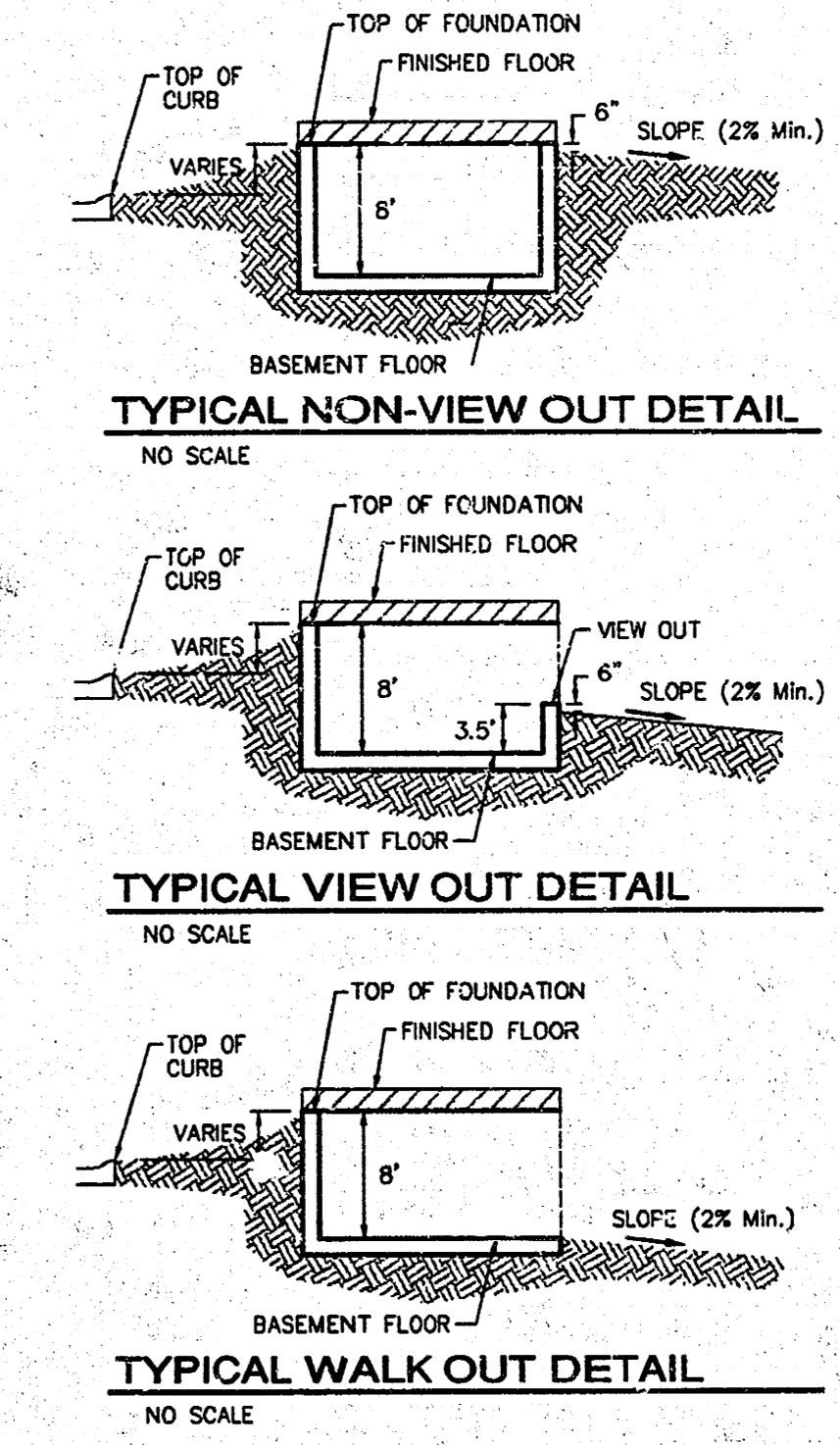


PRELIMINARY GRADING FUTURE PHASES

BENCHMARKS:
RR Spike in N. Face of PP in N.
R/W of Maple N. of Nineiron.
Elev. = 177.01 (City Datum)

* "C" Out center of north Headwall
of R/CB in N. R/W of Maple 570'
East of centerline of City View.
Elev. = 187.91 (City Datum)

Scale: 1" = 60'



- NOTES:**
1. PROPOSED TOP OF FOUNDATION ELEVATIONS ARE SHOWN ON PLANS. CONTRACTOR TO SET FINISHED FLOOR AND GARAGE FLOOR ELEVATIONS. ALL STREET ELEVATIONS SHOWN ON PLANS ARE FOR TOP OF CURB (FULL-HEIGHT).
 2. THIS GRADING PLAN IS DESIGNED WITH VIEW-OUTS AND NON-VIEW-OUTS. ELEVATIONS SHOWN AS XXX V.O. DEPICT WALK-OUT STRUCTURE. ELEVATIONS SHOWN AS XXX V.O. DEPICT WALK-OUT STRUCTURE.
 3. ALL LOTS SHALL MEET MINIMUM PAD REQUIREMENT AS SHOWN ON THE RECORDED PLAT.

| LOT | | MINIMUM BUILDING PAD ELEVATIONS FOR LOWEST OPENING TO THE STRUCTURES | |
|------|-------|--|-----------|
| LOT | BLOCK | CITY DATUM | ELEVATION |
| 1-24 | D | 177.20 | 1364.60 |
| 1-7 | E | 160.50 | 1147.90 |

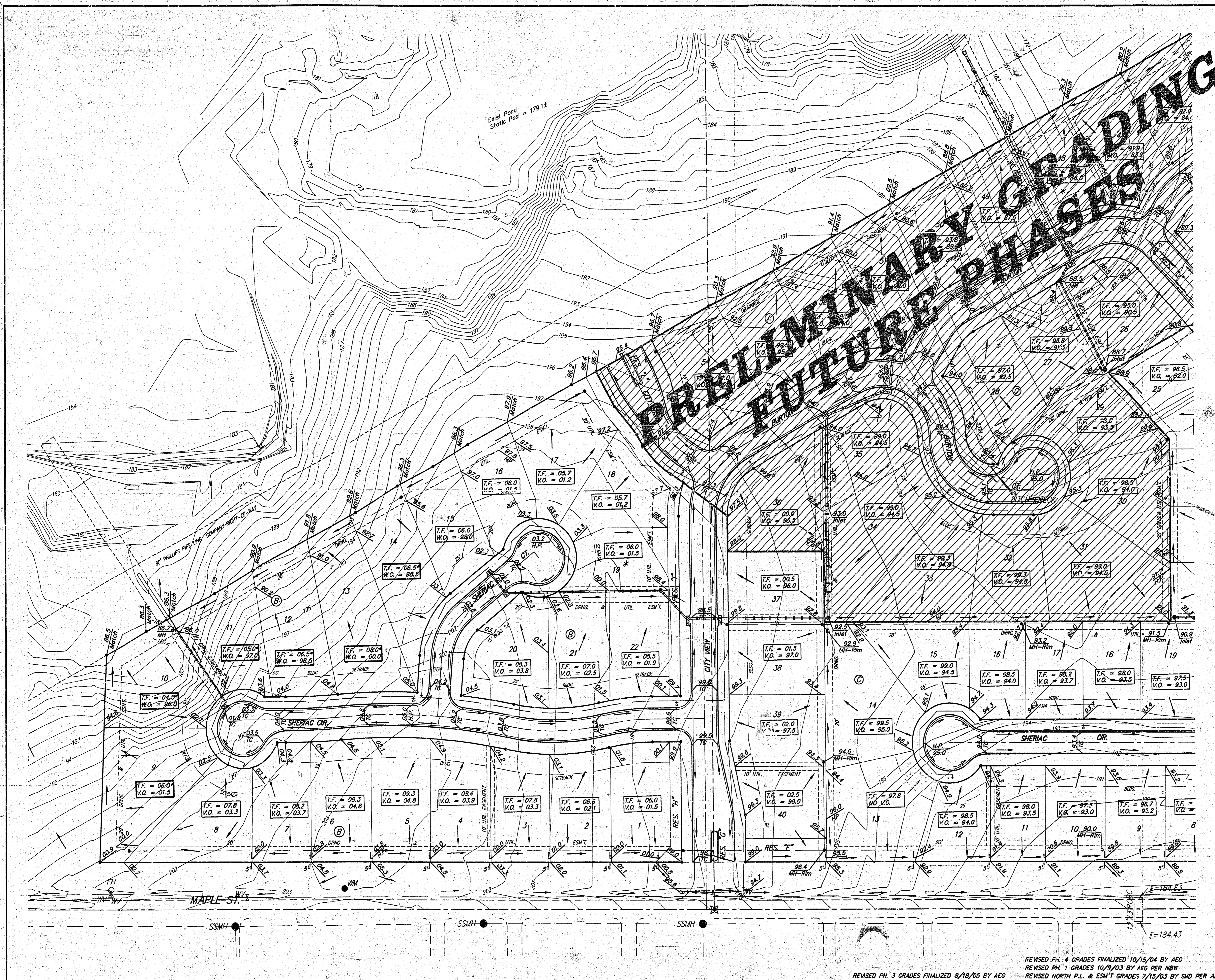
4. LOT DIMENSIONS HAVE BEEN OMITTED ON THIS PLAN. REFER TO THE RECORDED PLAT FOR FINAL DIMENSION, EASEMENT, & BUILDING SETBACK INFORMATION.
5. HOUSE PAD ELEVATIONS DEPICTED WITH BOLD OUTLINES WITH TOP OF FOUNDATIONS SHOWN AS XXX V.O. * INDICATE THAT DEEP FOOTINGS OR DEEP FOUNDATIONS MAY BE REQUIRED.
6. A DRAINAGE PLAN HAS BEEN DEVELOPED FOR THIS SUBDIVISION AND IS ON FILE WITH THE CITY OF WICHITA, KANSAS. DRAINAGE INTENT SHALL REMAIN AS DEPICTED OR AS MODIFIED WITH THE APPROVAL OF THE CITY ENGINEER OF THE CITY OF WICHITA, KANSAS. NO OBSTRUCTIONS WHICH IMPEDE THE FLOW OF THIS DRAINAGE PLAN SHALL BE ALLOWED.
7. ALL ELEVATIONS SHOWN ARE CITY OF WICHITA DATUM.

**SHADOW WOODS ADDITION
MASTER GRADING PLAN
WICHITA, KANSAS**

BAUGHMAN COMPANY P.A.
ENGINEERING, SURVEYING, & PLANNING
318-282-7271 • 315 ELLIS • WICHITA, KANSAS 67211

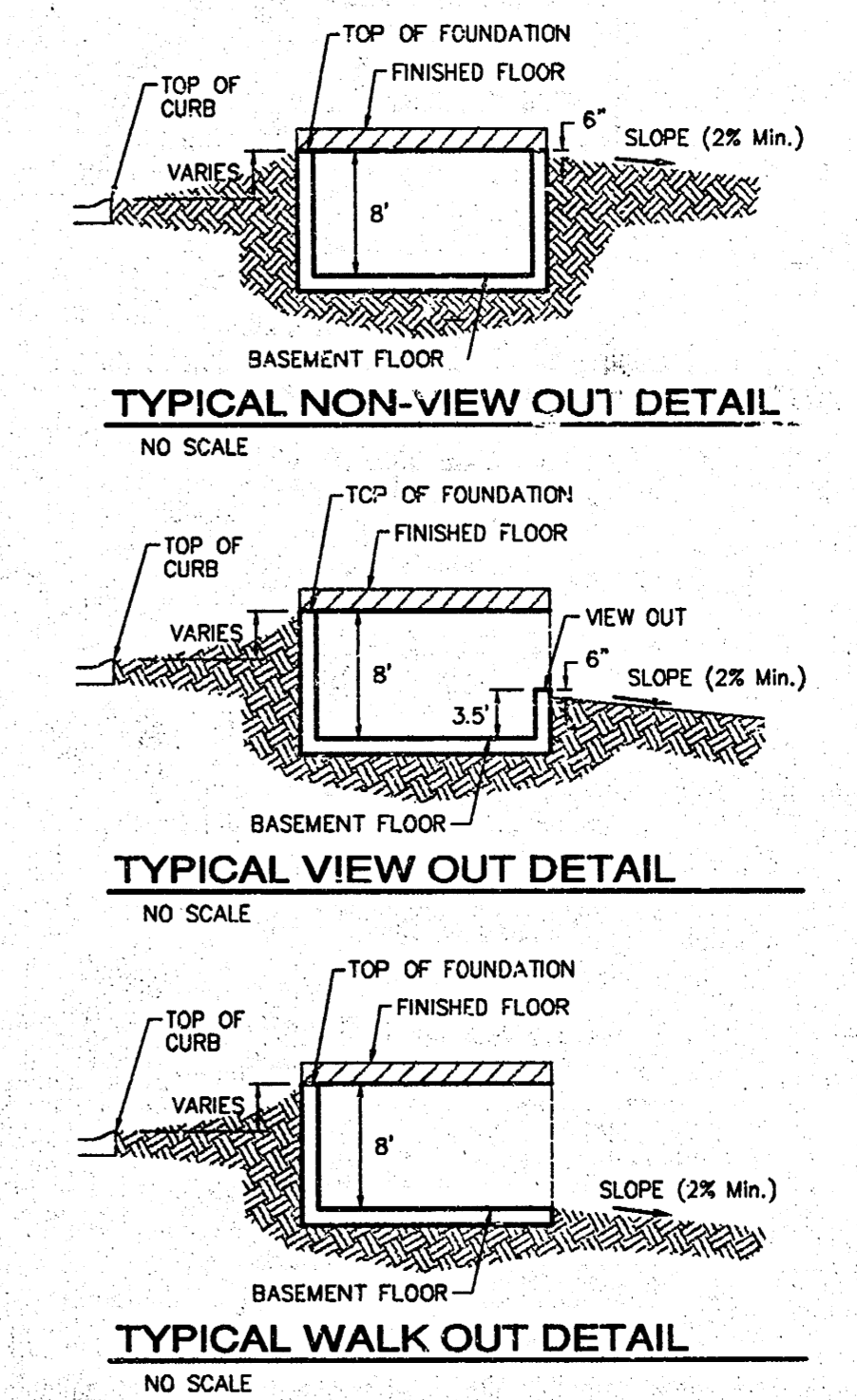
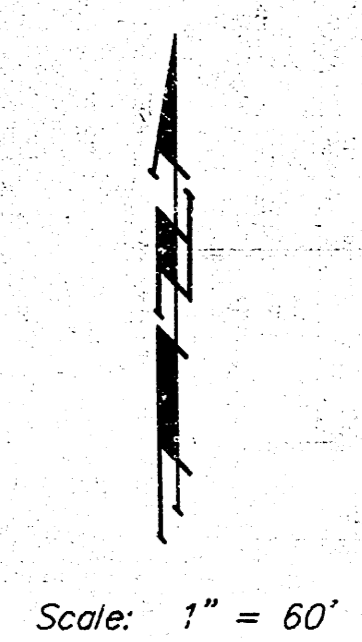
| | | | | | |
|--------|-------|----------|----------|-------|--------|
| DESIGN | DRAWN | APPROVED | DATE | SCALE | SHEET |
| SCJ | SCJ | SCJ | 03/13/03 | NOTE | 2 OF 4 |

REVISED PH. 4 GRADES FINALIZED 10/15/04 BY AEG
REVISED PH. 1 GRADES 10/9/03 BY AEG PER NBW
REVISED NORTH P.L. & ESM/T GRADES 7/15/03 BY SMD PER AEG
REVISED PH. 2 GRADES FINALIZED 12/14/04 BY AEG
REVISED SOUTH R/W GRADES 6/25/03 BY AEG



BENCHMARKS:
 RR Spike in N. Face of PP in N.
 R/W of Maple N. of Nineiron.
 Elev. = 177.01 (City Datum)

* "C" Cut center of north Headwall
 of RCPC in N. R/W of Maple 570'
 East of centerline of City View.
 Elev. = 187.91 (City Datum)



- NOTES:**
1. PROPOSED TOP OF FOUNDATION ELEVATIONS ARE SHOWN ON PLANS. CONTRACTOR TO SET FINISHED FLOOR AND GARAGE FLOOR ELEVATIONS. ALL STREET ELEVATIONS SHOWN ON PLANS ARE FOR TOP OF CURB (FULL-HEIGHT).
 2. THIS GRADING PLAN IS DESIGNED WITH VIEW-OUTS AND WALK-OUTS. ELEVATIONS SHOWN AS XX.X V.O. DEPICT VIEW-OUT STRUCTURES. ELEVATIONS SHOWN AS XXX.X V.O. DEPICT WALK-OUT STRUCTURES.
 3. ALL LOTS SHALL MEET MINIMUM PAD REQUIREMENT AS SHOWN ON THE RECORDED PLAT.

| MINIMUM BUILDING PAD ELEVATIONS FOR LOWEST OPENING TO THE STRUCTURES | | | |
|--|-------|------------|---------|
| LOT | BLOCK | ELEVATION | |
| | | CITY DATUM | NGVD29 |
| 1-24 | D | 177.20 | 1364.60 |
| 1-7 | E | 186.50 | 1347.90 |

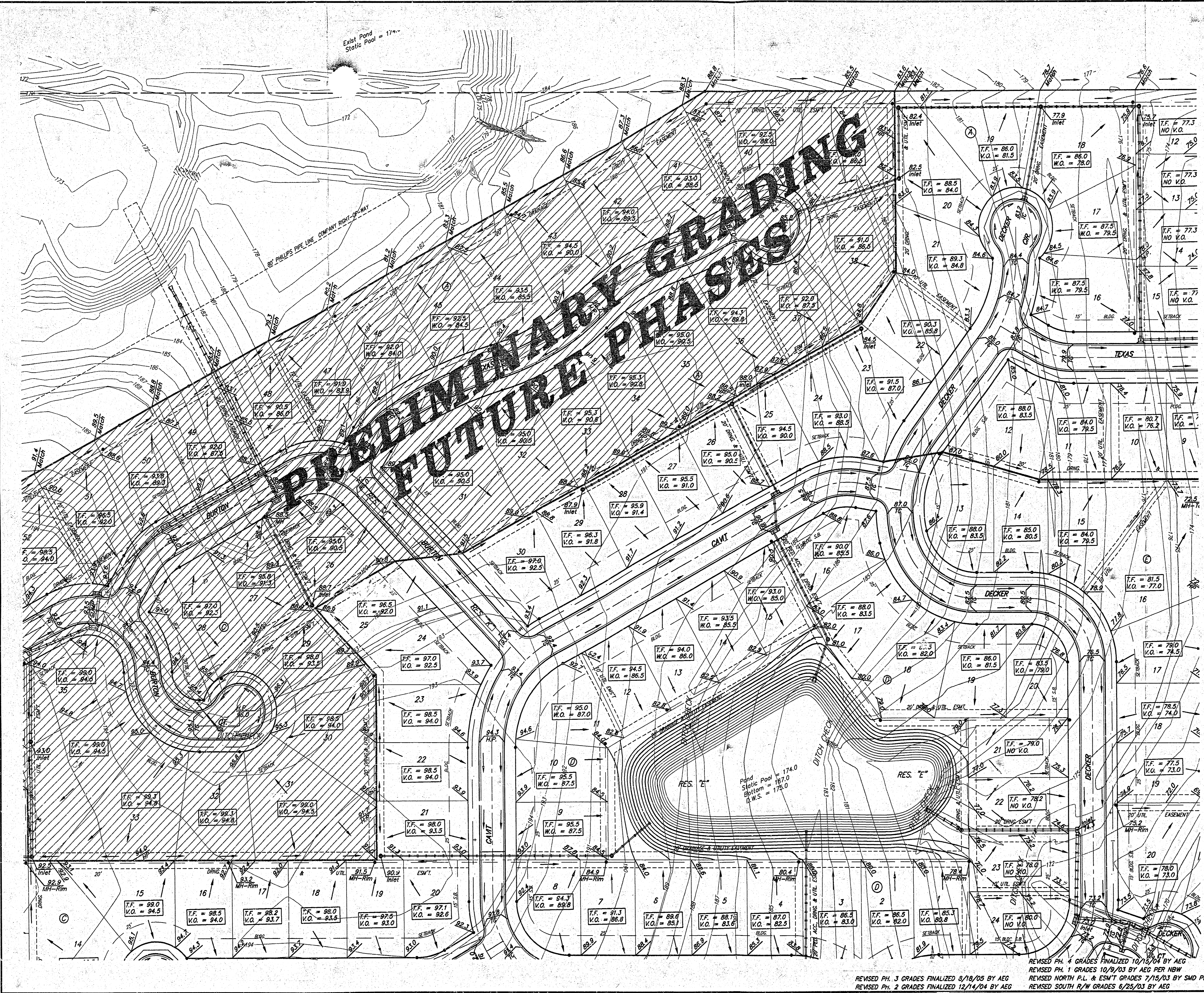
4. LOT DIMENSIONS HAVE BEEN OMITTED ON THIS PLAN. REFER TO THE RECORDED PLAT FOR FINAL DIMENSION, EASEMENT, & BUILDING SETBACK INFORMATION.
5. HOUSE PAD ELEVATIONS DEPICTED WITH BOLD OUTLINES WITH TOP OF FOUNDATIONS SHOWN AS XX.X T.F. * INDICATE THAT DEEP FOOTINGS OR DEEP FOUNDATIONS MAY BE REQUIRED.
6. A DRAINAGE PLAN HAS BEEN DEVELOPED FOR THIS SUBDIVISION AND IS ON FILE WITH THE CITY OF WICHITA, KANSAS. DRAINAGE INTENT SHALL REMAIN AS DEPICTED OR AS MODIFIED WITH THE APPROVAL OF THE CITY ENGINEER OF THE CITY OF WICHITA, KANSAS. NO OBSTRUCTIONS WHICH IMPEDE THE FLOW OF THIS DRAINAGE PLAN SHALL BE ALLOWED.
7. ALL ELEVATIONS SHOWN ARE CITY OF WICHITA DATUM.

**SHADOW WOODS ADDITION
 MASTER GRADING PLAN
 WICHITA, KANSAS**

BAUGHMAN COMPANY P.A.
 ENGINEERING, SURVEYING, & PLANNING
 318-262-7271 • 318 ELLIS • WICHITA, KANSAS 67211

| | | | | | |
|--------|-------|----------|----------|-------|--------|
| DESIGN | DRAWN | APPROVED | DATE | SCALE | SHEET |
| | SCL | | 03/13/03 | NOTE | 3 OF 4 |

REVISED PH. 4 GRADES FINALIZED 10/15/04 BY AEG
 REVISED PH. 1 GRADES 10/9/03 BY AEG PER MBW
 REVISED NORTH P.L. & ESM/T GRADES 7/15/03 BY SMO PER AEG
 REVISED PH. 2 GRADES FINALIZED 12/14/04 BY AEG
 REVISED SOUTH R/W GRADES 6/25/03 BY AEG

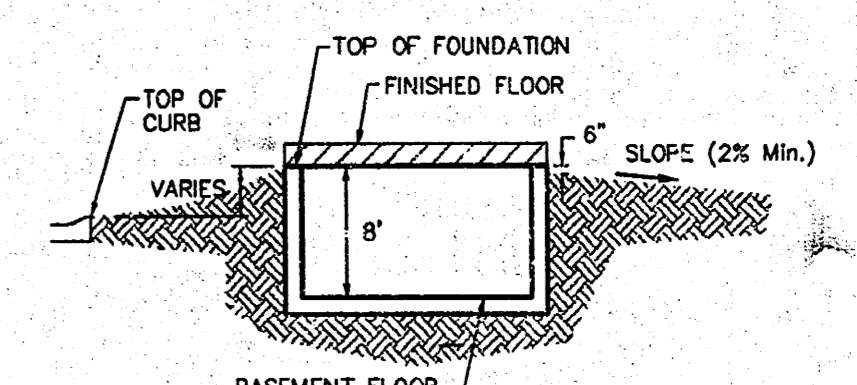


PRELIMINARY FUTURE PHASES

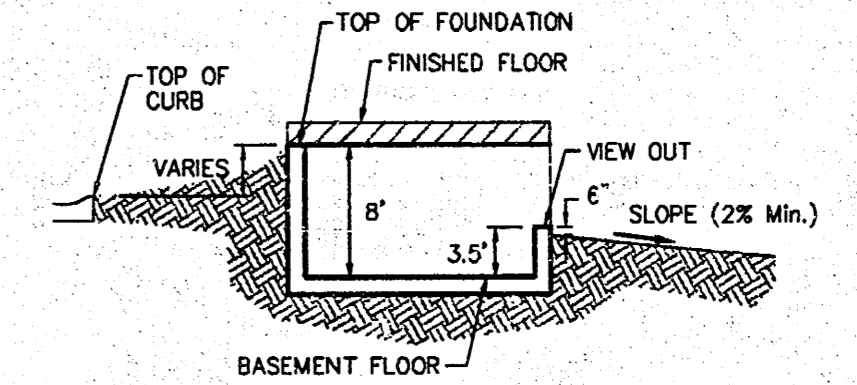
BENCHMARKS:
 RR Spike in N. Face of PP in N.
 R/W of Maple N. of Nineiron.
 Elev. = 177.01 (City Datum)

□ Cut center of north Headwall
 of RCB in N. R/W of Maple 570
 East of centerline of City View.
 Elev. = 187.91 (City Datum)

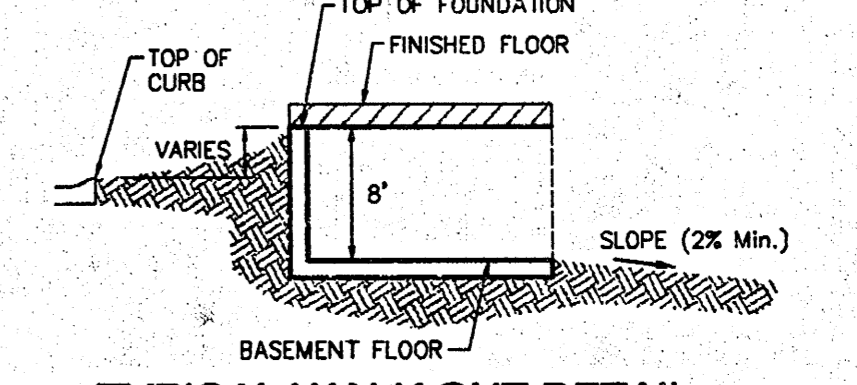
Scale: 1" = 60'



TYPICAL NON-VIEW OUT DETAIL
 NO SCALE



TYPICAL VIEW OUT DETAIL
 NO SCALE



TYPICAL WALK OUT DETAIL
 NO SCALE

- NOTES:**
1. PROPOSED TOP OF FOUNDATION ELEVATIONS ARE SHOWN ON PLANS. CONTRACTOR TO SET FINISHED FLOOR AND GARAGE FLOOR ELEVATIONS. ALL STREET ELEVATIONS SHOWN ON PLANS ARE FOR TOP OF CURB (FULL-HEIGHT).
 2. THIS GRADING PLAN IS DESIGNED WITH VIEW-OUTS AND WALK-OUTS. ELEVATIONS SHOWN AS XX.X V.O. DEPICT VIEW-OUT STRUCTURES. ELEVATIONS SHOWN AS XX.X W.O. DEPICT WALK-OUT STRUCTURES.
 3. ALL LOTS SHALL MEET MINIMUM PAD REQUIREMENT AS SHOWN ON THE RECORDED PLAT.

| MINIMUM BUILDING PAD ELEVATIONS FOR LOWEST OPENING TO THE STRUCTURES | | | |
|--|-------|------------|----------|
| LOT | BLOCK | ELEVATION | |
| | | CITY DATUM | NGVD29 |
| 1-24 | D | 177.20 | 1,184.60 |
| 1-7 | E | 180.50 | 1,347.80 |

4. LOT DIMENSIONS HAVE BEEN OMITTED ON THIS PLAN. REFER TO THE RECORDED PLAT FOR FINAL DIMENSION, EASEMENT, & BUILDING SETBACK INFORMATION.
5. HOUSE PAD ELEVATIONS DEPICTED WITH BOLD OUTLINES WITH TOP OF FOUNDATIONS SHOWN AS XX.X T.F. INDICATE THAT DEEP FOOTINGS OR DEEP FOUNDATIONS MAY BE REQUIRED.
6. A DRAINAGE PLAN HAS BEEN DEVELOPED FOR THIS SUBDIVISION AND IS ON FILE WITH THE CITY OF WICHITA, KANSAS. DRAINAGE INTENT SHALL REMAIN AS DEPICTED OR AS MODIFIED WITH THE APPROVAL OF THE CITY ENGINEER OF THE CITY OF WICHITA, KANSAS. NO OBSTRUCTIONS WHICH IMPEDE THE FLOW OF THIS DRAINAGE PLAN SHALL BE ALLOWED.
7. ALL ELEVATIONS SHOWN ARE CITY OF WICHITA DATUM.

SHADOW WOODS ADDITION
MASTER GRADING PLAN
 WICHITA, KANSAS

BAUGHMAN COMPANY P.A.
 ENGINEERING, SURVEYING, & PLANNING
 318-262-7273 • 318 ELLIS • WICHITA, KANSAS 67201

PROJECT NUMBER _____ SHEET **4** OF **4**

| | | | | |
|--------|-------|----------|----------|-------|
| DESIGN | DRAWN | APPROVED | DATE | SCALE |
| | SCL | | 03/13/03 | NOTE |

REVISED PH. 3 GRADES FINALIZED 8/18/05 BY AEG
 REVISED PH. 1 GRADES FINALIZED 10/15/04 BY AEG
 REVISED PH. 2 GRADES FINALIZED 12/14/04 BY AEG
 REVISED NORTH R/W GRADES 7/15/03 BY SHD PER AEG
 REVISED SOUTH R/W GRADES 6/25/03 BY AEG