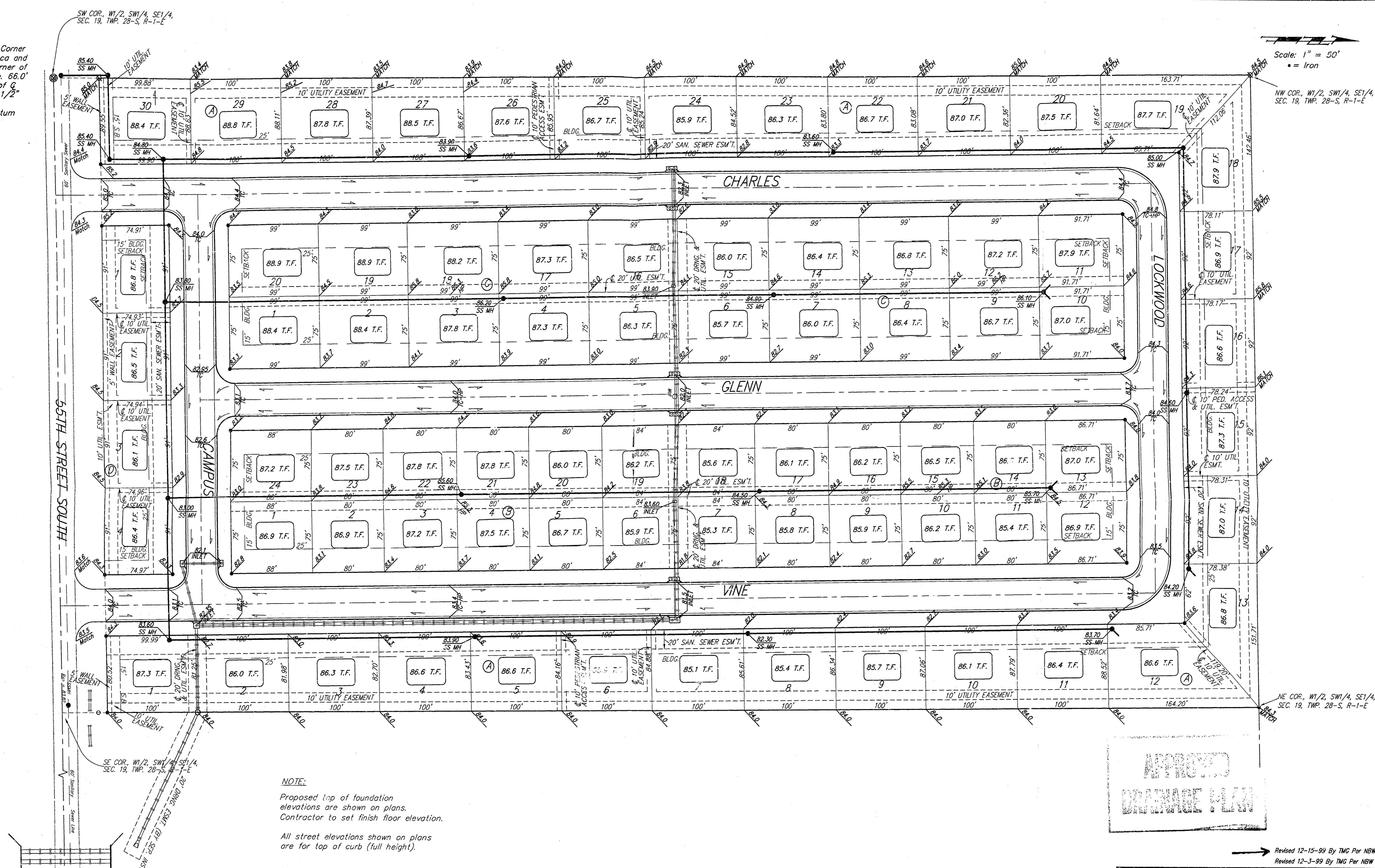
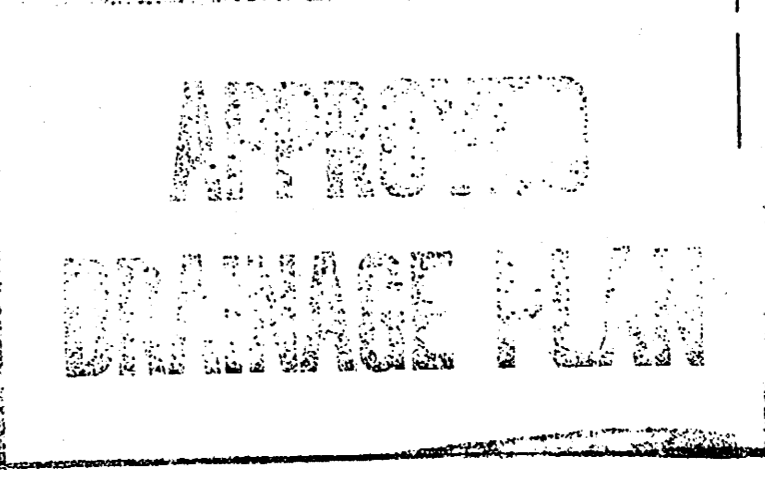


BENCHMARK:  
C.O.W. Benchmark-NW Corner of intersection of Seneca and 55th St. South; SE Corner of traffic signal light base, 66.0' West and 49.4' North of G of both, 86.03' NW of 1/2" iron @ Sec. Cor. Elev. = 83.56 City Datum

Scale: 1" = 50'  
• = Iron



NOTE:  
Proposed top of foundation elevations are shown on plans.  
Contractor to set finish floor elevation.  
All street elevations shown on plans are for top of curb (full height).



Revised 12-15-99 By TMG Per NBW  
Revised 12-3-99 By TMG Per NBW

**SIMMONS PARK ADDITION**  
**GRADING PLAN**  
WICHITA, KANSAS

**BAUGHMAN COMPANY P.A.**  
ENGINEERING, SURVEYING, & PLANNING  
316-262-7271 • 315 ELLIS • WICHITA, KANSAS 67211

DESIGN NBW	DRAWN TMG	APPROVED	DATE 3-99
PROJECT NUMBER		SCALE NOTED	
1		1	

SE COR. SE 1/4, SEC. 19,  
TWP. 28-S, R-1-E