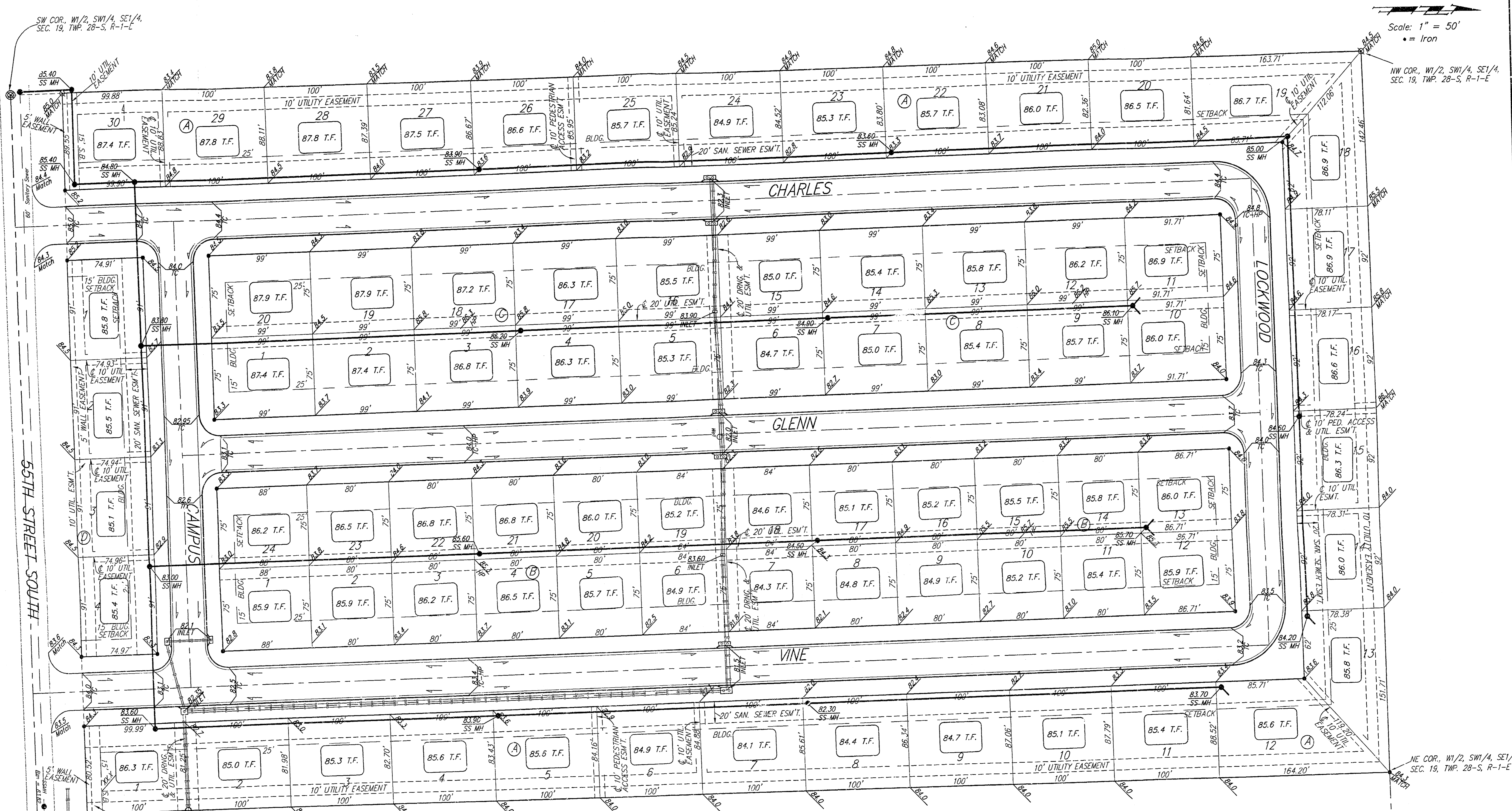


BENCHMARK:
 C.O.W. Benchmark-NW Corner
 of intersection of Seneca and
 55th St. South; SE Corner of
 traffic signal light base. 66.0'
 West and 49.4' North of C
 of both. 86.03' NW of 1/2"
 iron @ Sec. Cor.
 Elev. = 83.56 City Datum

Scale: 1" = 50'
 • = Iron



NOTE:
 Proposed top of foundation
 elevations are shown on plans.
 Contractor to set finish floor elevation.
 All street elevations shown on plans
 are for top of curb (full height).

**APPROVED
 DRAINAGE PLAN**

**SIMMONS PARK ADDITION
 GRADING PLAN**
 WICHITA, KANSAS

BAUGHMAN COMPANY P.A.
 ENGINEERING, SURVEYING, & PLANNING
 318-262-7271 • 3.5 ELLIS • WICHITA, KANSAS 67211

PROJECT NUMBER: _____ SHEET: **1** OF **1**

DESIGN: NBW DRAWN: TMC APPROVED: _____ DATE: 5-99 SCALE: NOTED

RAT CARD MARKED 17 NOV 1999

SE COR., SE 1/4, SEC. 19,
 TWP. 28-S, R-1-E

NE COR., W 1/2, SW 1/4, SE 1/4,
 SEC. 19, TWP. 28-S, R-1-E

SW COR., W 1/2, SW 1/4, SE 1/4,
 SEC. 19, TWP. 28-S, R-1-E