

SCALE : 1" = 50'

Legal Description

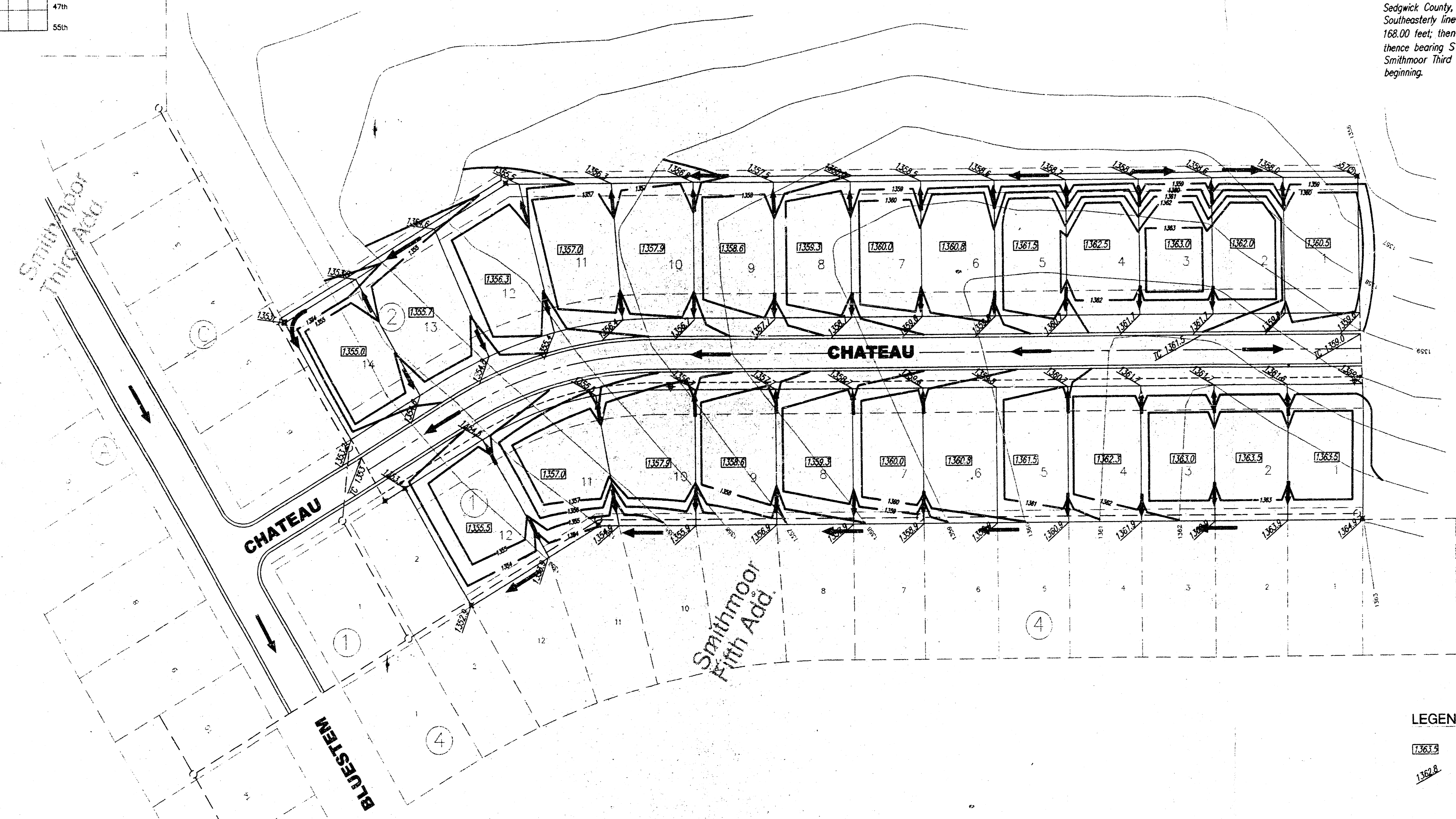
Beginning at the Northeast corner of Lot 12, Block 4, Smithmoor Fifth Addition to Wichita, Sedgwick County, Kansas; thence bearing S 30°17'40" E, along the easterly line of said Smithmoor Fifth Addition, a distance of 127.50 feet; thence continuing along the East line of said Smithmoor Fifth Addition at a bearing of S 00°00'00" W, a distance of 654.81 feet to the Southeast corner of said Smithmoor Fifth Addition; thence bearing N 90°00'00" E, a distance of 278.00 feet; thence bearing N 30°17'40" W, a distance of 221.00 feet to a point on the Southeastery line of Smithmoor Third Addition to Wichita, Sedgwick County, Kansas; thence bearing S 59°42'20" W along the Southeastery line of said Smithmoor Third Addition, a distance of 168.00 feet; thence bearing S 30°17'40" E a distance of 20.00 feet; thence bearing S 59°42'20" E, along the Southeastery line of said Smithmoor Third Addition, a distance of 111.03 feet to the point of beginning.

Subdivider
 Smith & Company
 P.O. Box 780595
 Wichita, Kansas 67278

Surveyor/Engineer
 Babar M. Khan P.E., L.S.
 Municipal Engineers, P.A.
 254-Laura, Suite 201
 Wichita, Kansas 67211

**APPROVED
 DRAINAGE PLAN**

SITE LOCATION MAP
 N.T.S.

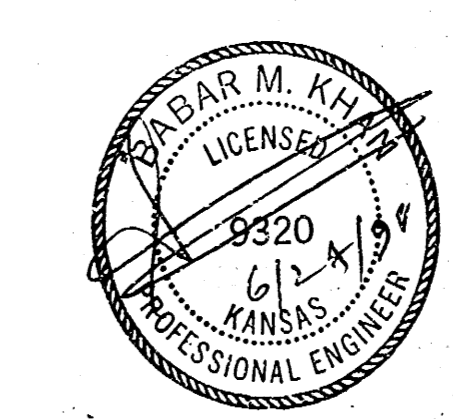


LEGEND

- 1363.3 Finished Ground Elevation (Bottom of Finished Floor)
- 1362.8 Spot Elevation (Finished)

BENCHMARK:

BM #1. S. Rim of MH # 43-13-3, Located at SE corner of Lot 1, Block 4, Smithmoor Fifth Addition Wichita, Sedgwick County, Kansas. Elevation = 1364.64



**LOT GRADING PLAN
 SMITHMOOR EIGHT ADDITION
 TO
 WICHITA, SEDGWICK COUNTY, KANSAS**

SMITHMOOR 8TH ADDN

ME MUNICIPAL ENGINEERS, P.A.
 254-LAURA, SUITE 201
 WICHITA, KANSAS 67211
 316-282-3842