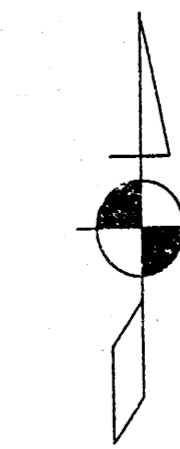


# SMITHMOOR 10TH ADDITION LOT GRADING PLAN

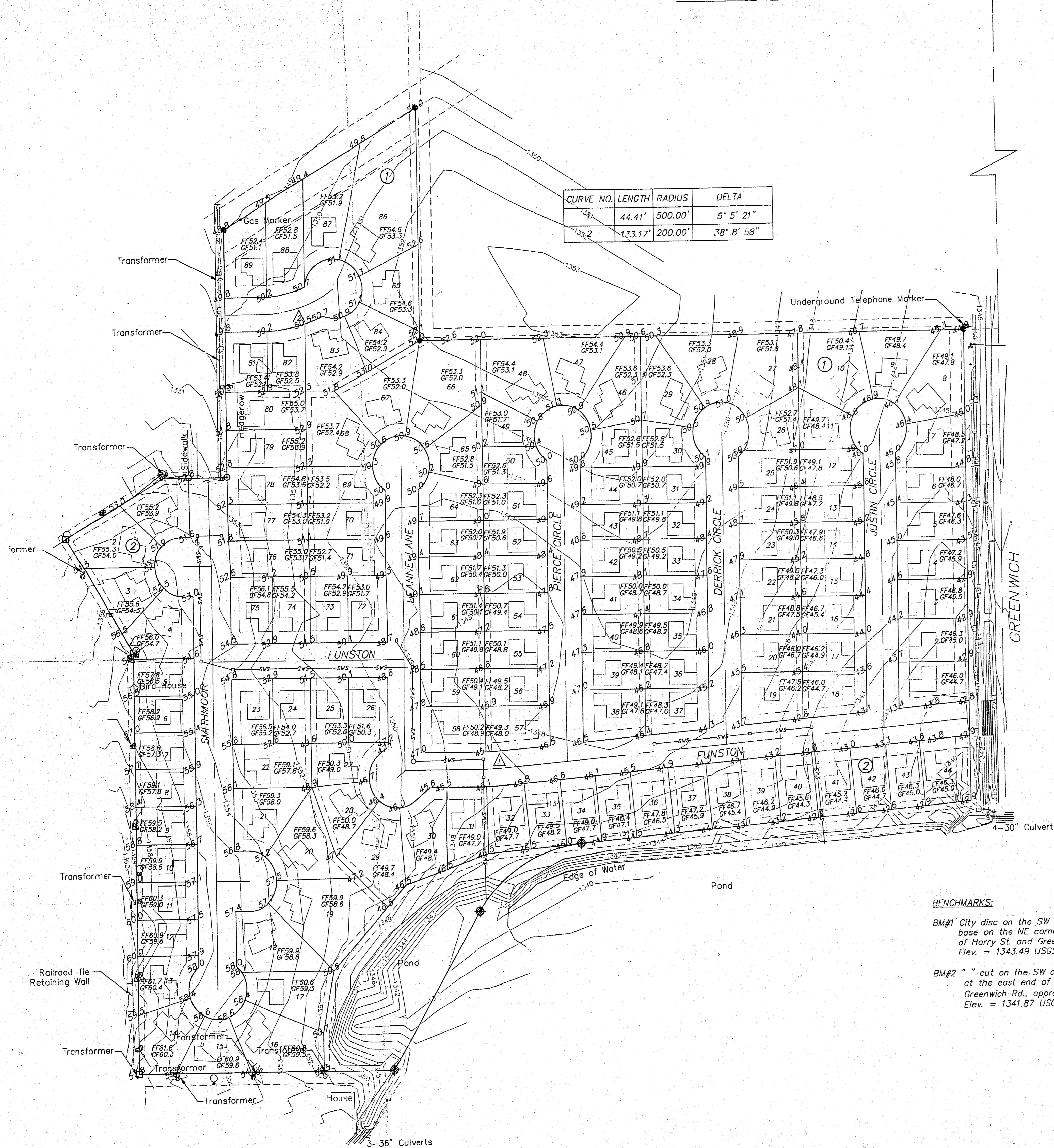
NE Cor. NE 1/4  
Sec. 33-27S-2E

HARRY

CURVE NO.	LENGTH	RADIUS	DELTA
54	44.41'	500.00'	5° 5' 21"
38-2	133.17'	200.00'	38° 8' 58"



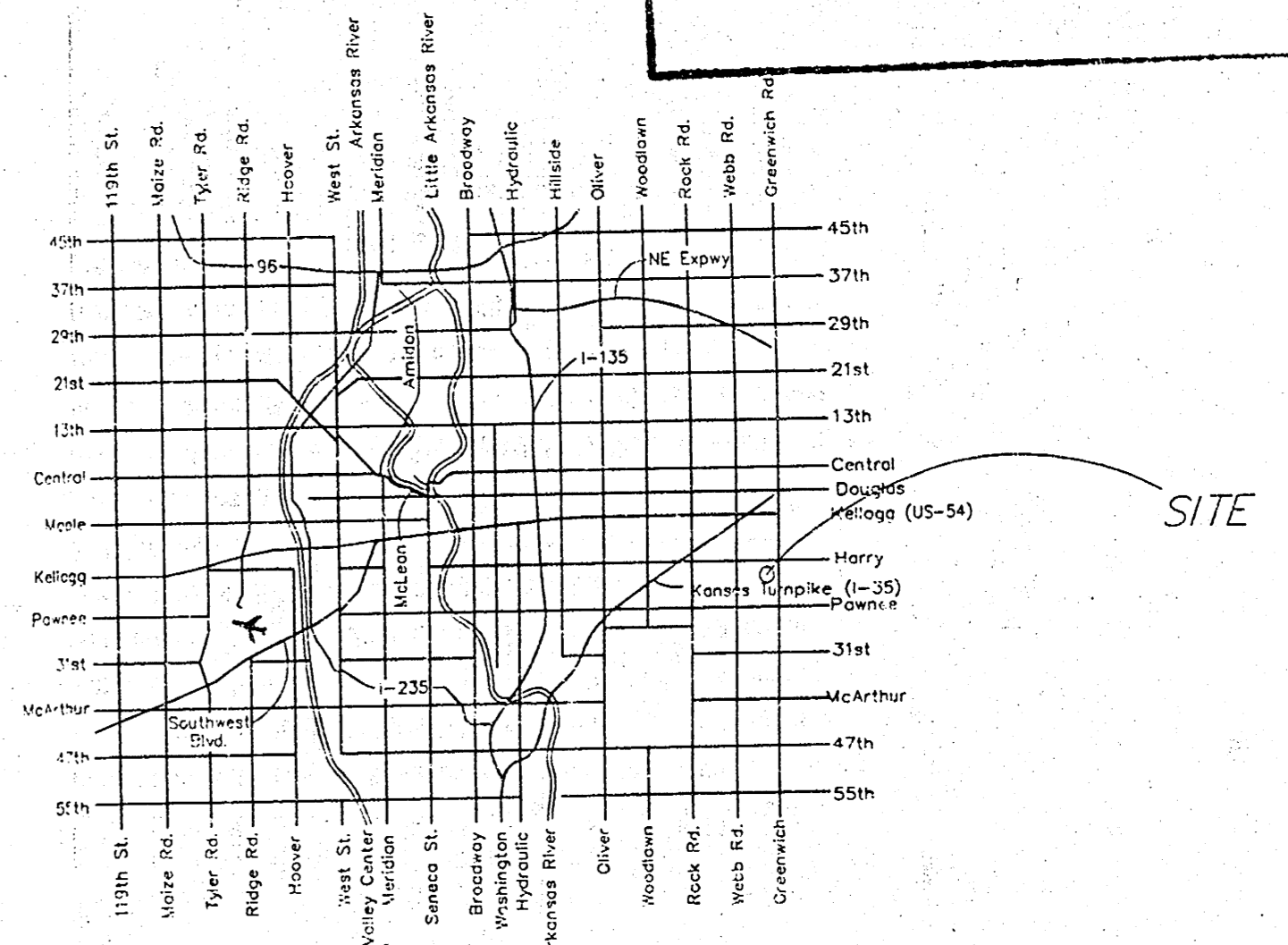
SCALE



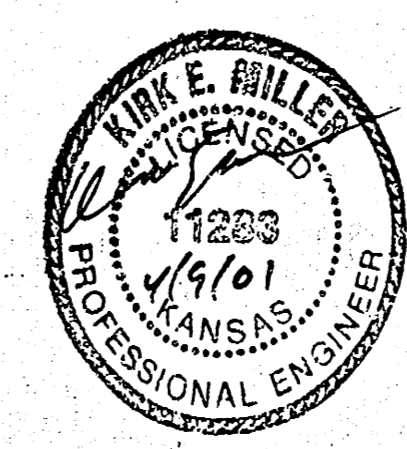
- LEGEND**
- Manhole
  - Sign
  - Telephone Pedestal
  - Cable TV Pedestal
  - Tree
  - Power Pole
  - Guy Wire
  - Fire Hydrant
  - Waterline
  - Underground Electric
  - Overhead Electric
  - Gas Line
  - CATV
  - Underground Cable TV
  - 5/8" Rebar (found) AMPA
  - 5/8" Rebar (found) MEPA
  - 40d Nail (found)
  - 5/8" Rebar (set) B.WARD
  - FF Finished Floor
  - GF Garage Floor
  - 42.9 Proposed Grade

**APPROVED  
DRAINAGE PLAN**

**BENCHMARKS:**  
 BM#1 City disc on the SW corner traffic signal base on the NE corner of the intersection of Harry St. and Greenwich Rd. Elev. = 1343.49 USGS  
 BM#2 " " cut on the SW corner of the N. Headwall at the east end of pond on the W. side of Greenwich Rd., approx. 1000' S. of Harry St. Elev. = 1341.87 USGS



LOCATION MAP



Filename: 01001/preplot1 Date Plot Prepared: 4/29/01

**kemiller**  
engineering

516 S. Market, Wichita, KS 67202 316/264-0242

**SMITHMOOR 10th**  
New Drainage Rules!