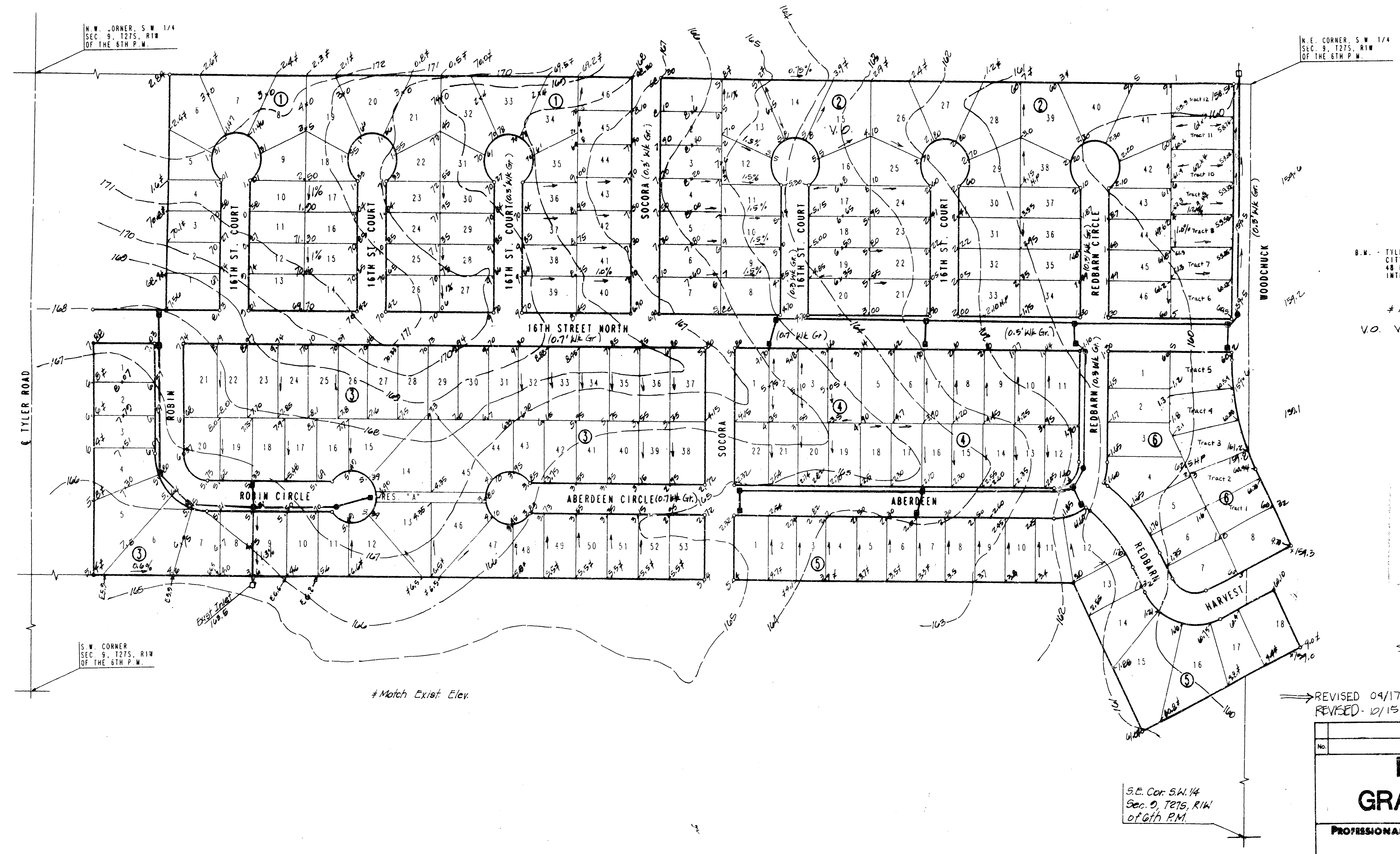


# SOCORA VILLAGE

## AN ADDITION TO WICHITA, SEDGWICK COUNTY, KANSAS



N  
↑  
S

SCALE: 1" = 100'

○ = IRON SET  
● = IRON FOUND

B.M. = TYLER AND 13TH STREET NORTH  
CITY OF WICHITA BENCH MARK DISC.  
48 FT. EAST AND 48 FT. NORTH OF  
INTERSECTION OF CENTERLINE BOTH.  
ELEV. 1167.829 CITY DATUM

# Match Exist Elev.  
V.O. VIEW-OUT LOT

APPROVED  
DRAINAGE PLAN

VRH 8/1/98

SOCORA VILLAGE  
REVISIONS FOR LOT SPLITS  
IN BLOCKS 2 & 6

→ REVISED 09/17/98 KER  
REVISED 10/13/97 RHH

No.	Revision	By	Date
<b>DETAILED GRADING PLAN</b>			
<b>PROFESSIONAL ENGINEERING CONSULTANTS, P.A.</b>			
<small>ENGINEERS WICHITA, KANSAS</small>			
Designed by	M.W.B.	Job No.	98200
Drawn by	E.B.	Date	10-29-98
		Sht. /	of /