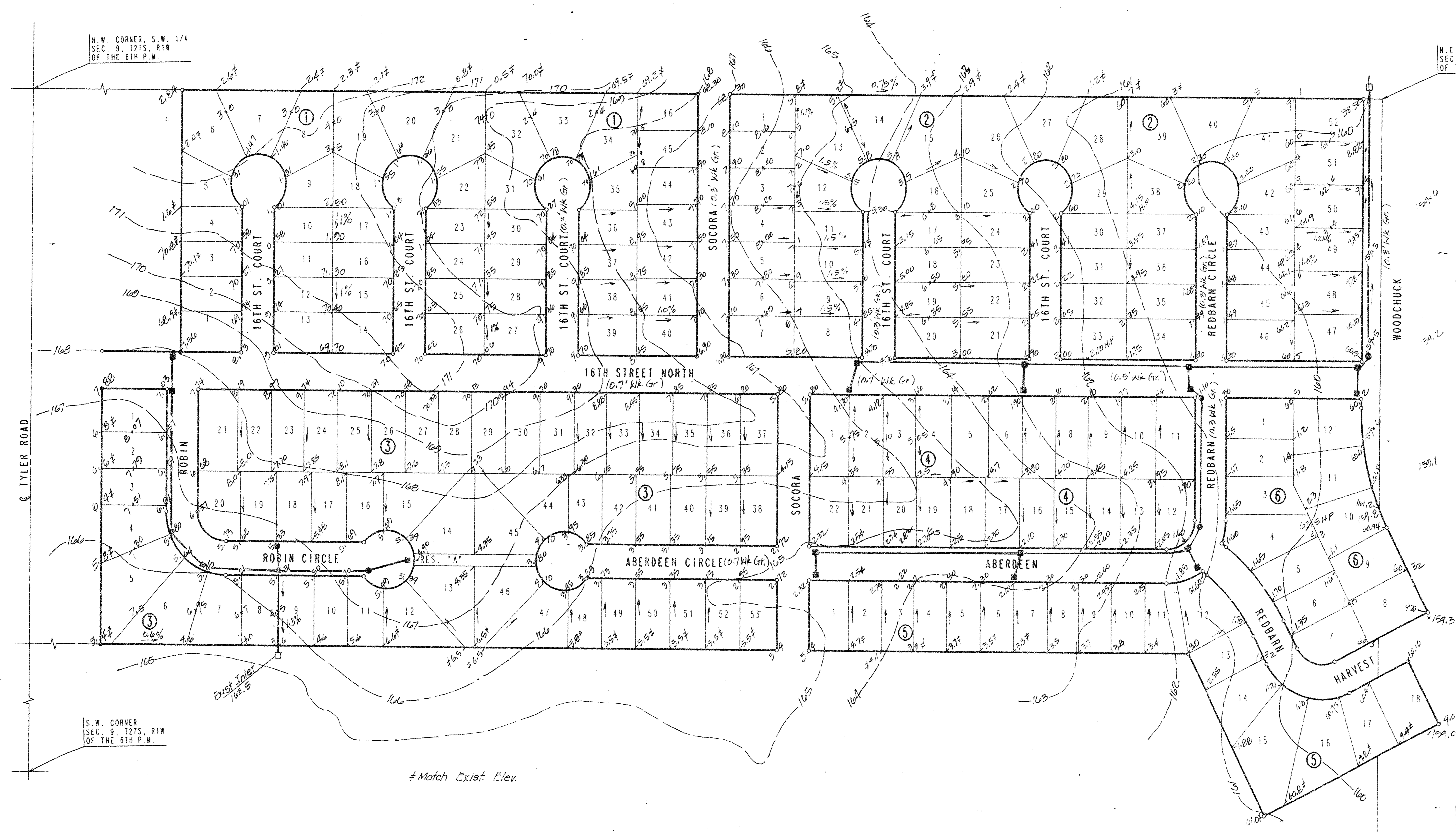


SOCORA VILLAGE

AN ADDITION TO WICHITA, SEDGWICK COUNTY, KANSAS



N.E. CORNER, S.W. 1/4
SEC. 9, T27S, R1W
OF THE 5TH P.M.

N.W. CORNER, S.W. 1/4
SEC. 9, T27S, R1W
OF THE 5TH P.M.

S.W. CORNER
SEC. 9, T27S, R1W
OF THE 6TH P.M.

S.E. Cor. S.W. 1/4
Sec. 9, T27S, R1W
of 6th P.M.

SCALE: 1" = 100'
● IRON SET
● IRON FOUND

9.W. - TYLER AND 13TH STREET NORTH
CITY OF WICHITA BENCH MARK DISC.
48 FT. EAST AND 48 FT. NORTH OF
INTERSECTION OF CENTERLINE BOTH.
ELEV. = 167.929 CITY DATUM
Match Exist. Elev.

VRH 10/31/92

**APPROVED
DRAINAGE PLAN**



SOCORA VILLAGE			
No.	Revision	By	Date
DETAILED GRADING PLAN			
PROFESSIONAL ENGINEERING CONSULTANTS, P.A.			
ENGINEERS WICHITA, KANSAS			
Designed by	M.W.B.	Job No.	56-92209
Drawn by	E.S.	Date	10-29-92
		Sht. /	of /

**FILMED FROM THE BEST
AVAILABLE COPY....**