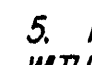


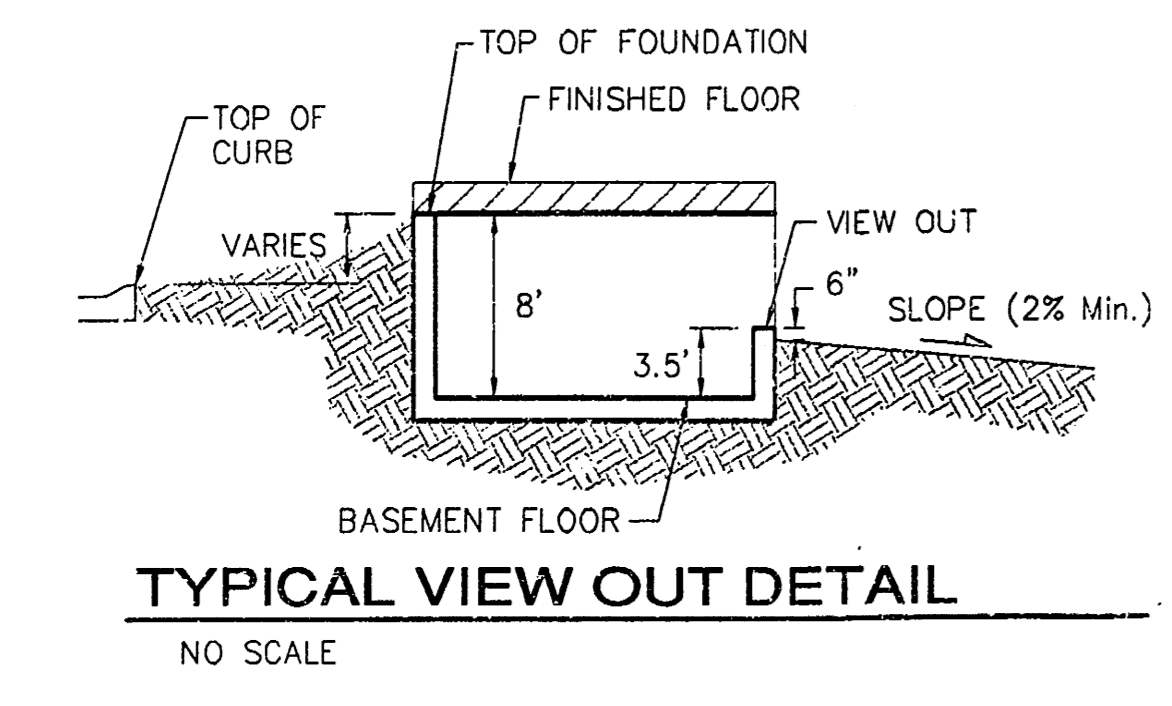
0 50 100

BENCHMARK:  
R.R. Spike in H.P., 42' SE of the SW Cor., NW/4,  
Sec. 28, Twp. 27-S-R-2-W.  
Elev. = 1430.95 NGVD29

NOTES:

1. PROPOSED TOP OF FOUNDATION ELEVATIONS ARE SHOWN ON PLANS. CONTRACTOR TO SET FINISHED FLOOR AND GARAGE FLOOR ELEVATIONS. ALL STREET ELEVATIONS SHOWN ON PLANS ARE FOR TOP OF CURB (FULL-HEIGHT).
2. THIS GRADING PLAN IS DESIGNED WITH VIEW-OUTS AND WALK-OUTS. ELEVATIONS SHOWN AS X.X V.O. DEPICT VIEW-OUT STRUCTURES. ELEVATIONS SHOWN AS X.X V.O. DEPICT WALK-OUT STRUCTURES.
3. LOT DIMENSIONS HAVE BEEN OMITTED ON THIS PLAN. REFER TO THE RECORDED PLAT FOR FINAL DIMENSION, EASEMENT, & BUILDING SETBACK INFORMATION.
4. HOUSE PAD ELEVATIONS DEPICTED WITH BOLD OUTLINES AND NOTED WITH THIS SYMBOL  INDICATE THAT DEEP FOOTINGS OR DEEP FOUNDATIONS MAY BE REQUIRED.
5. A DRAINAGE PLAN HAS BEEN DEVELOPED FOR THIS SUBDIVISION AND IS ON FILE WITH THE CITY OF WICHITA, KANSAS. DRAINAGE INTENT SHALL REMAIN AS DEPICTED OR AS MODIFIED WITH THE APPROVAL OF THE CITY ENGINEER OF THE CITY OF WICHITA, KANSAS. NO OBSTRUCTIONS WHICH IMPEDS THE FLOW OF THIS DRAINAGE PLAN SHALL BE ALLOWED.
6. ALL ELEVATIONS SHOWN ARE CITY OF WICHITA DATUM.
7. THE FOLLOWING LOTS LISTED HAVE SHALLOW SANITARY SEWER SERVICE. CONTRACTOR SHALL BE RESPONSIBLE TO USE CAUTION IN SANITARY SEWER SERVICE LINE INSTALLATION TO ENSURE ADEQUATE DEPTH FOR BASEMENT SERVICE.

LOT	BLOCK
8-11,16-18	B
1-2	D



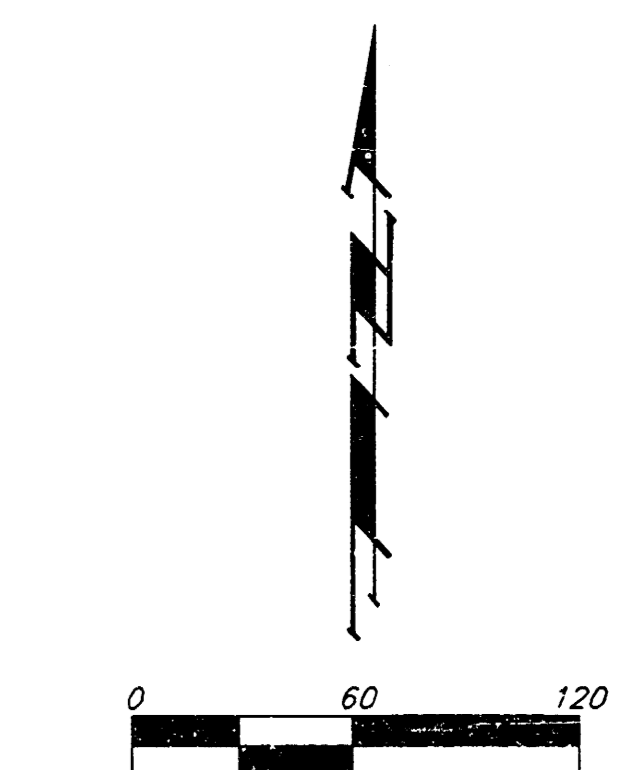
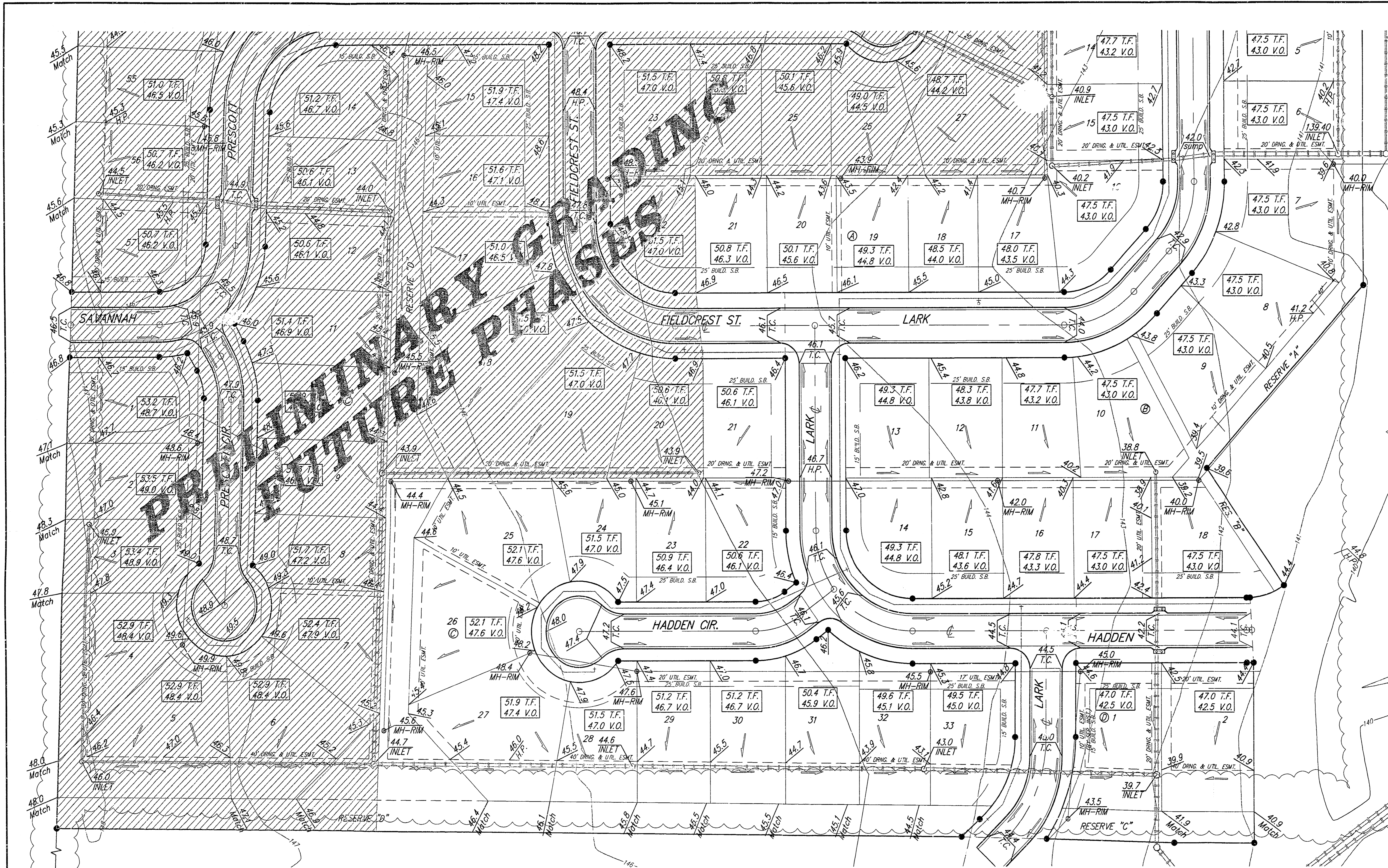
APPROVED  
DRAINAGE PLAN

**Baughman** SOUTHERN RIDGE 2ND ADDITION  
SUBDIVISION GRADING PLAN

Baughman Company, P.A. 315 Elm St., Wichita, KS 67211 P:316.262.7771 F:316.262.0149  
ENGINEERING | SURVEYING | PLANNING | LANDSCAPE ARCHITECTURE

PROJECT NUMBER	DESIGN	DRAWN
	BLG	BLG
REVISIONS	APPROVED	DATE
6/23/05	AEJ	06-30-04
UPDATE PLAN FOR P.L. CONST. & FOR FINAL	SCALE	
	noted	
	SHEET	
		<b>1 OF 2</b>

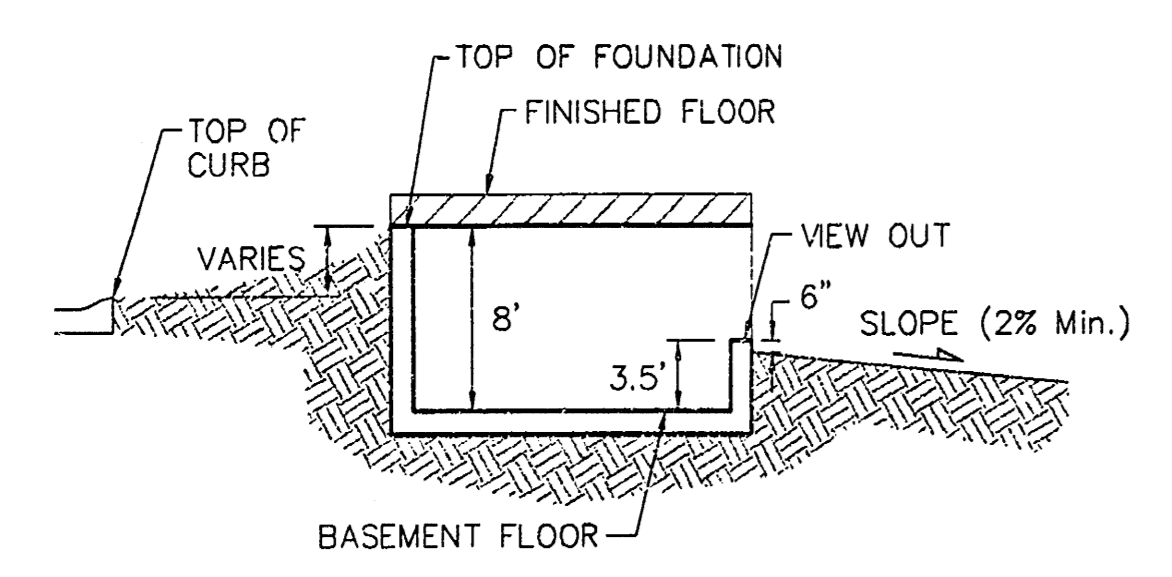
F:\HYDRO\PROJECTS\SOUTHERN RIDGE 2ND ADD\DWG\PREGRADE.DWG



BENCHMARK:  
 R.R. Spike in H.P., 42' SE of the SW Cor., NW 1/4,  
 Sec. 28, Twp. 27-S, R-2-W  
 Elev. = 1430.95 NGVD29

- NOTES:**
1. PROPOSED TOP OF FOUNDATION ELEVATIONS ARE SHOWN ON PLANS. CONTRACTOR TO SET FINISHED FLOOR AND GARAGE FLOOR ELEVATIONS. ALL STREET ELEVATIONS SHOWN ON PLANS ARE FOR TOP OF CURB (FULL-HEIGHT).
  2. THIS GRADING PLAN IS DESIGNED WITH VIEW-OUTS AND WALK-OUTS. ELEVATIONS SHOWN AS XXX V.O. DEPICT VIEW-OUT STRUCTURES. ELEVATIONS SHOWN AS XXX V.O. DEPICT WALK-OUT STRUCTURES.
  3. LOT DIMENSIONS HAVE BEEN OMITTED ON THIS PLAN. REFER TO THE RECORDED PLAT FOR FINAL DIMENSION, EASEMENT, & BUILDING SETBACK INFORMATION.
  4. HOUSE PAD ELEVATIONS DEPICTED WITH BOLD OUTLINES AND NOTED WITH THIS SYMBOL  $\bullet$  INDICATE THAT DEEP FOOTINGS OR DEEP FOUNDATIONS MAY BE REQUIRED.
  5. A DRAINAGE PLAN HAS BEEN DEVELOPED FOR THIS SUBDIVISION AND IS ON FILE WITH THE CITY OF WICHITA, KANSAS. DRAINAGE INTENT SHALL REMAIN AS DEPICTED OR AS MODIFIED WITH THE APPROVAL OF THE CITY ENGINEER OF THE CITY OF WICHITA, KANSAS. NO OBSTRUCTIONS WHICH IMPEDE THE FLOW OF THIS DRAINAGE PLAN SHALL BE ALLOWED.
  6. ALL ELEVATIONS SHOWN ARE CITY OF WICHITA DATUM.
  7. THE FOLLOWING LOTS LISTED HAVE SHALLOW SANITARY SEWER SERVICE. CONTRACTOR SHALL BE RESPONSIBLE TO USE CAUTION IN SANITARY SEWER SERVICE LINE INSTALLATION TO ENSURE ADEQUATE DEPTH FOR BASEMENT SERVICE.

LOT	BLOCK
8-11,16-19	B
1-2	D



**Baughman** SOUTHERN RIDGE 2ND ADDITION  
**SUBDIVISION GRADING PLAN**

Baughman Company, P.A. 315 Elm St., Wichita, KS 67211 P 316-263-2211 F 316-263-0149  
 ENGINEERING | SURVEYING | PLANNING | LANDSCAPE ARCHITECTURE

PROJECT NUMBER	DESIGN	DRAWN
	BLO	BLO
REVISIONS:	APPROVED	DATE
		06-30-04
	SCALE	noted
	SHEET	

**2 OF 2**

\\HYDRO\PROJECTS\SOUTHERN RIDGE 2ND\DWG\PREGRADE.DWG