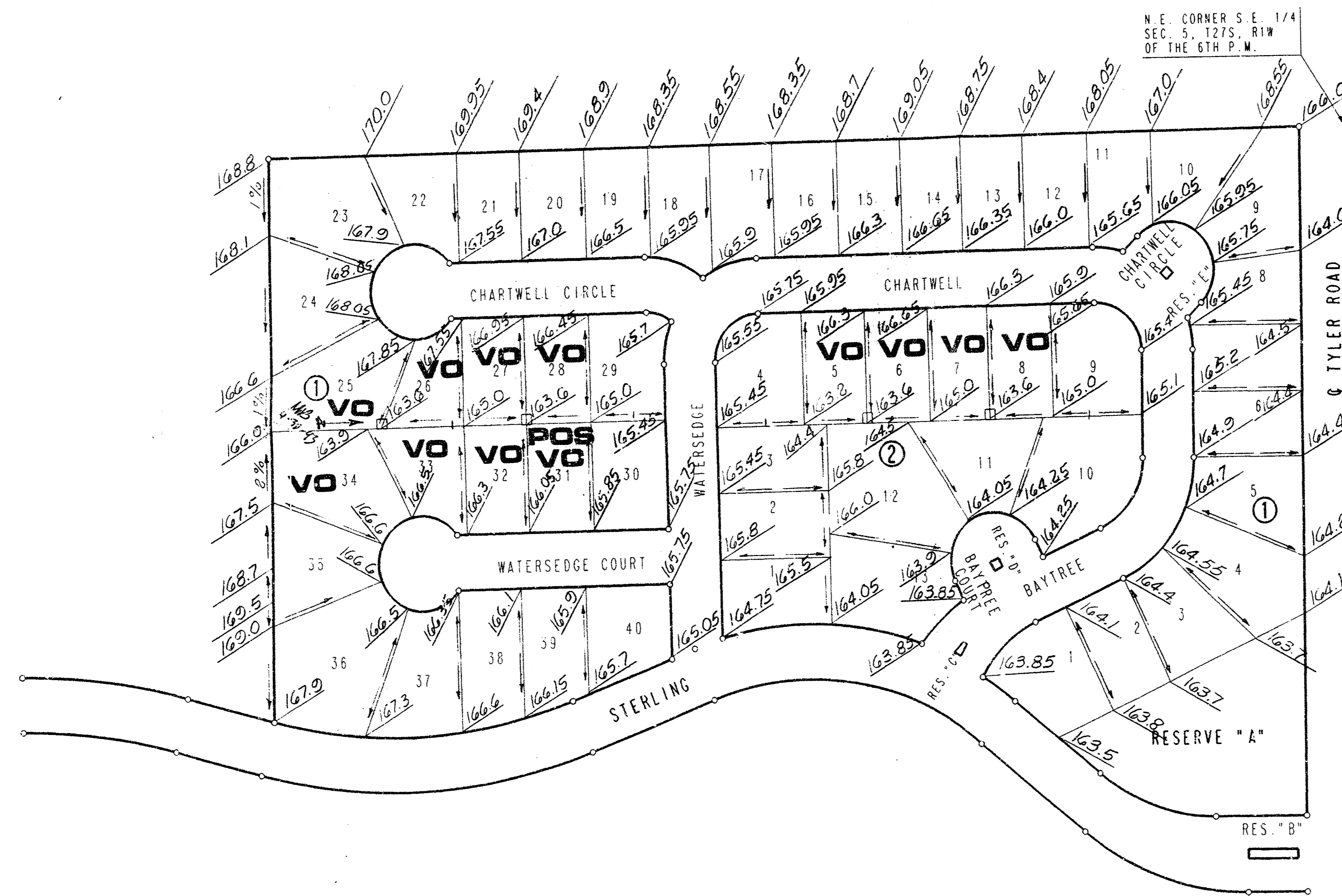


# STERLING FARMS 2ND ADDITION TO WICHITA, SEDGWICK COUNTY, KANSAS



SCALE: 1" = 100'  
0" = IRON SET

B.M. - STANDARD CITY B.M. (DISC) 10' WEST AND 90' FT. SOUTH OF CENTERLINE INTERSECTION OF 21ST STREET NORTH AND TYLER ROAD  
ELEV. = 161.95 CITY DATUM

ALL BUILDING SETBACK LINES ARE 20'  
UNLESS NOTED OTHERWISE.

FOR ADDITIONAL SETBACKS SEE U.P. DP-178

MINIMUM PAD ELEVATION (LOWEST OPENING) FOR LOTS 1 THROUGH 4, BLOCK SHALL BE ELEVATION 155.0 M.S.L. OR ELEVATION 164.6 CITY DATUM

VO - Viewout

POS VO - Possibly Viewout

**APPROVED  
DRAINAGE PLAN**

PRELIMINARY  
4/28/1993

STERLING FARMS 2ND  
PLAT CARD MARKED 15 NOV 93  
DETAILED DRAINAGE PLAN

FILMED FROM THE BEST AVAILABLE COPY