

# STERLING FARMS 6TH ADDITION

## TO WICHITA, SEDGWICK COUNTY, KANSAS

### FOUR CORNER LOT GRADING



SCALE: 1"=100'

• = IRON FOUND  
o = 3/4" IRON SET

BSL = BUILDING SETBACK LINE  
CAC = COMPLETE ACCESS CONTROL

FOR ADDITIONAL BUILDING SETBACKS SEE C.U.P. DP-178

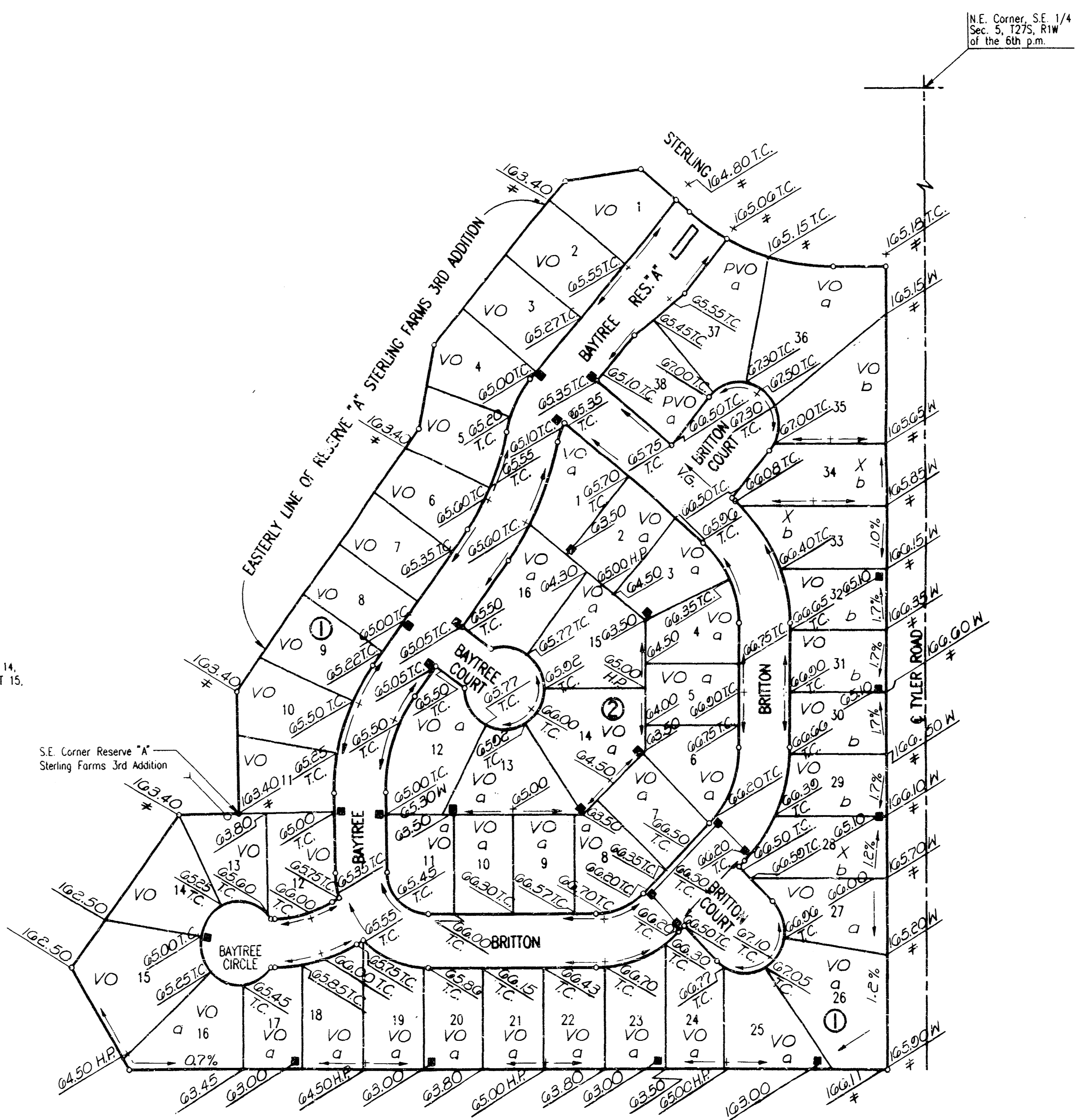
B.M. - STANDARD CITY B.M. DISC 38" WEST AND 90" SOUTH OF THE INTERSECTION OF THE CENTERLINES OF 21ST STREET NORTH AND TYLER ROAD.  
ELEV. = 169.95 CITY DATUM  
ELEV. = 1357.35 M.S.L.

CHISELED "d" AT S.W. CORNER TOP HEADWALL POB  
WEST OF KEITH.  
ELEV. = 161.28 CITY DATUM  
ELEV. = 1348.46 M.S.L.

MINIMUM PAD ELEVATION (LOWEST OPENING) FOR LOTS 1 THROUGH 14, BLOCK 1, SHALL BE ELEV. 1351 M.S.L.=163.6 CITY DATUM AND LOT 15, BLOCK 1, SHALL BE ELEV. 1350 M.S.L.=162.6 CITY DATUM

**LEGEND**

H.P. High Point  
# Match Existing  
T.C. Top of Curb Elevation  
W Walk Grade Elevation  
VO View Out Basement Lot  
PVO Possible View Out Basement Lot  
X No View Out Basement Lot  
V.G. Valley Gutter  
a Low Opening = 1G6.0  
b Low Opening = 1G7.0



**APPROVED  
DRAINAGE PLAN**

10/17/17  
 5/11/18  
 10/17/18