

STONEBOROUGH

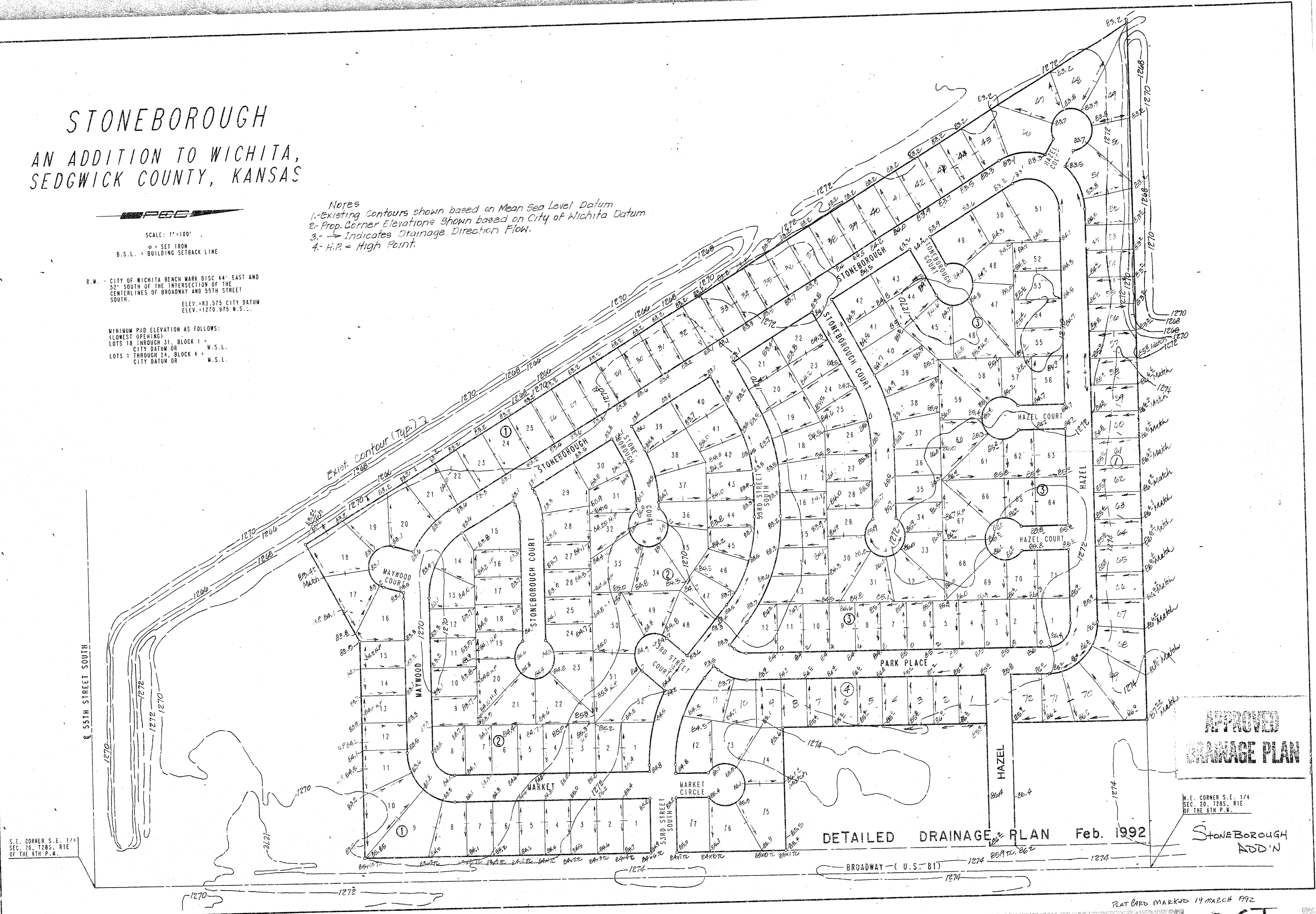
AN ADDITION TO WICHITA, SEDGWICK COUNTY, KANSAS

SCALE: 1" = 100'
 ○ = SET IRON
 B.S.L. = BUILDING SETBACK LINE

B.M. = CITY OF WICHITA BENCH MARK DISC 44' EAST AND 52' SOUTH OF THE INTERSECTION OF THE CENTER LINES OF BROADWAY AND 55TH STREET SOUTH.
 ELEV. +83.575 CITY DATUM
 ELEV. -1270.975 M.S.L.

MINIMUM PAD ELEVATION AS FOLLOWS:
 (LOWEST OPENING)
 LOTS 18 THROUGH 31, BLOCK 1 = CITY DATUM OR M.S.L.
 LOTS 1 THROUGH 24, BLOCK 4 = CITY DATUM OR M.S.L.

- Notes**
- 1- Existing Contours shown based on Mean Sea Level Datum
 - 2- Prop. Corner Elevations shown based on City of Wichita Datum
 - 3- → Indicates Drainage Direction Flow.
 - 4- H.P. = High Point.



S.E. CORNER S.E. 1/4
 SEC. 20, T28S, R1E
 OF THE 6TH P.M.

DETAILED DRAINAGE PLAN Feb. 1992

**APPROVED
 DRAINAGE PLAN**

N.E. CORNER S.E. 1/4
 SEC. 20, T28S, R1E
 OF THE 6TH P.M.
**STONEBOROUGH
 ADD'N**

PLAT CARD MARKED 19 MARCH 1992

OCI