

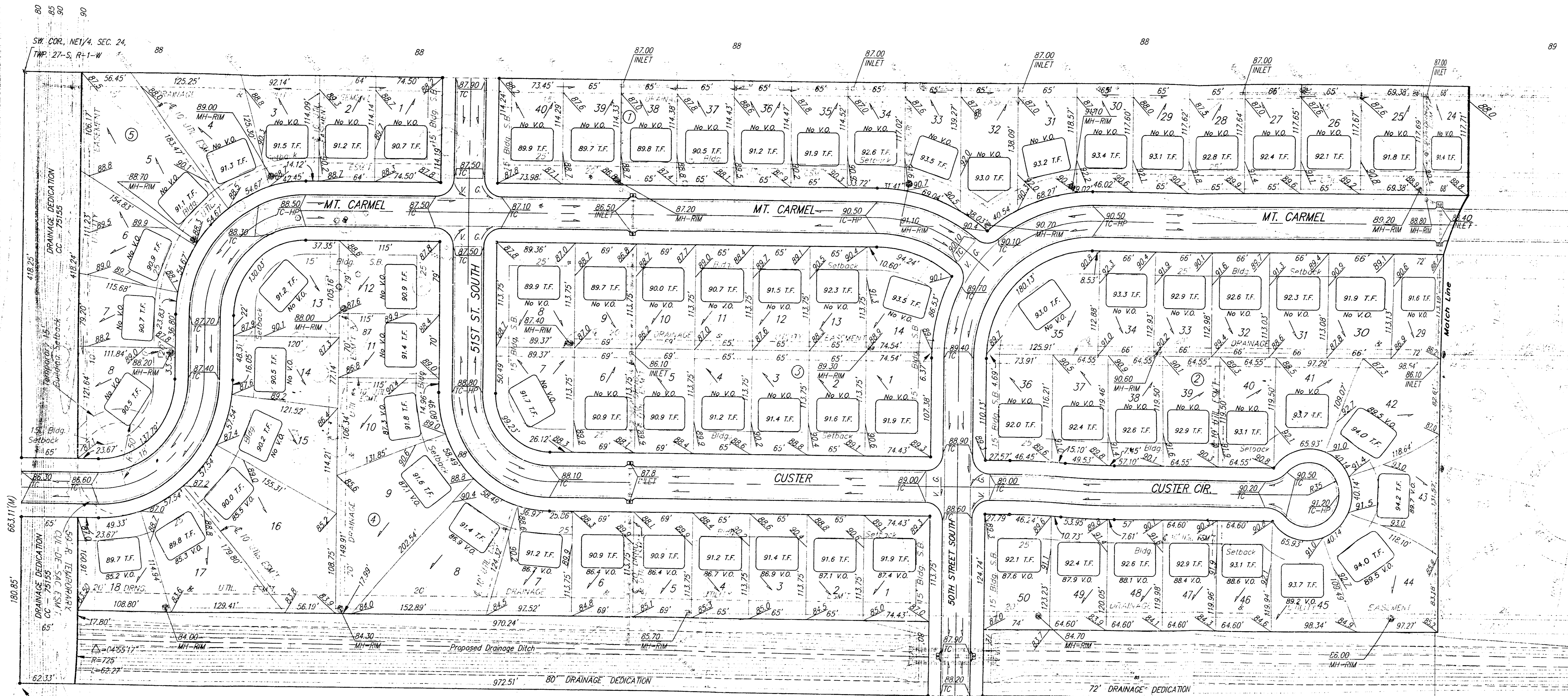
Railroad Spike in Power Pole
 Located 27' South and 402' East
 of the Northwest Corner of the
 NE 1/4, Section 24, TWP. 27-S,
 R-1-W.

Elevation = 92.98 City Datum

City of Wichita Disc Located
 44' North and 30' East of the
 Centerlines of 47th Street South
 and Meridian.

Elevation = 91.78 City Datum

Scale: 1" = 60'
 • = Iron



SE COR., W1/2, W1/2, NE1/4,
 SEC. 24, TWP. 27-S, R-1-W

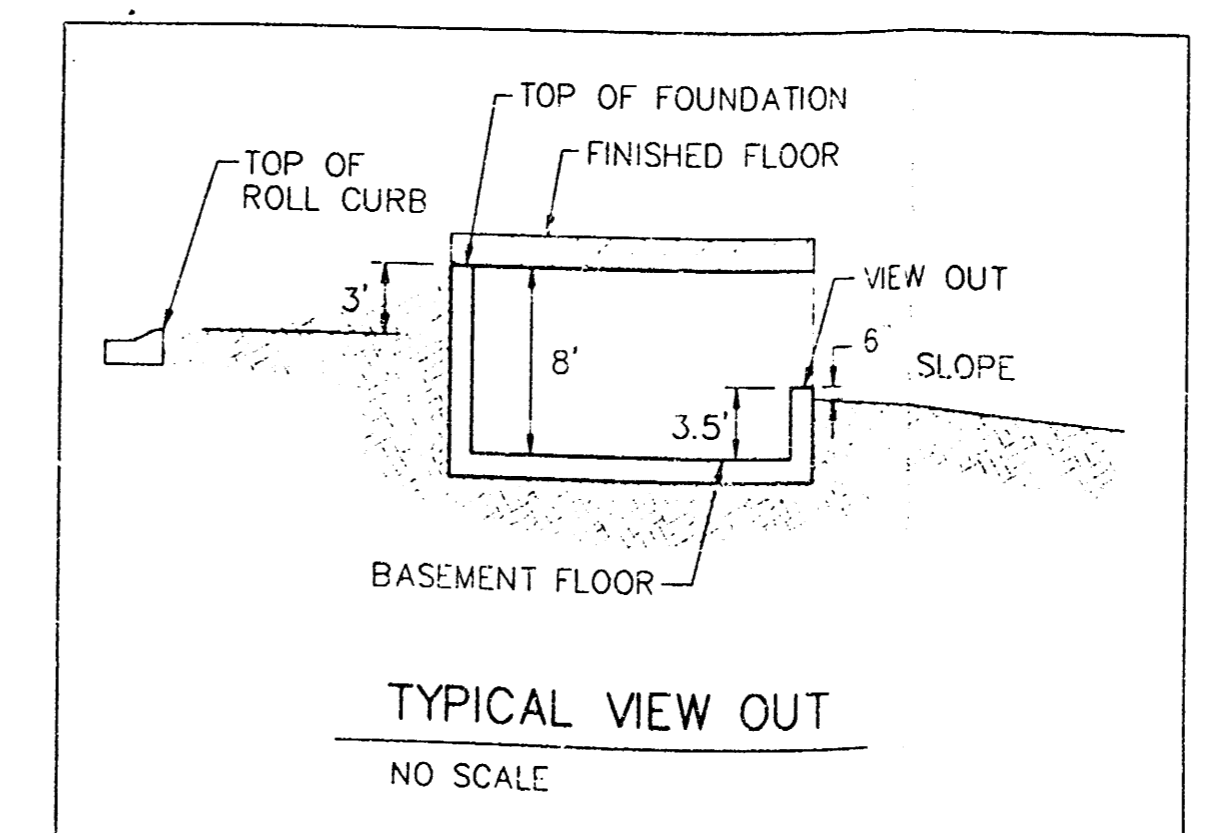
NOTE:
 Proposed top of foundation elevations are
 shown on plans. Contractor to set finished
 floor and garage floor elevations.

All street elevations shown on plans
 are for top of curb (full height).

View-out elevations are denoted as
 XXX.V.C.

MINIMUM BUILDING PAD ELEVATIONS FOR
 LOWEST OPENING TO THE STRUCTURES

LOT	BLOCK	BLOCK CITY DATUM	M.S.L.
6	2	89.0	1276.40
9-10	2	89.0	1276.40
11-14	2	88.0	1275.40
44	2	88.0	1275.40
45-50	2	87.0	1274.40
1-7	4	86.0	1273.40
8-9	4	85.0	1272.40
15-18	4	85.0	1272.40
5-8	5	86.0	1273.40



STONEBRIAR ADDITION
LOT GRADE PLAN
 WICHITA, KANSAS

BAUGHMAN COMPANY P.A.
 ENGINEERING, SURVEYING, & PLANNING

315-262-2271 • 315-262-2272 • WICHITA, KANSAS 67201

PROJECT NUMBER: _____ SHEET: **2** OF **2**

DESIGN: BP DATE: 10-04-96 SCALE: NOTED