

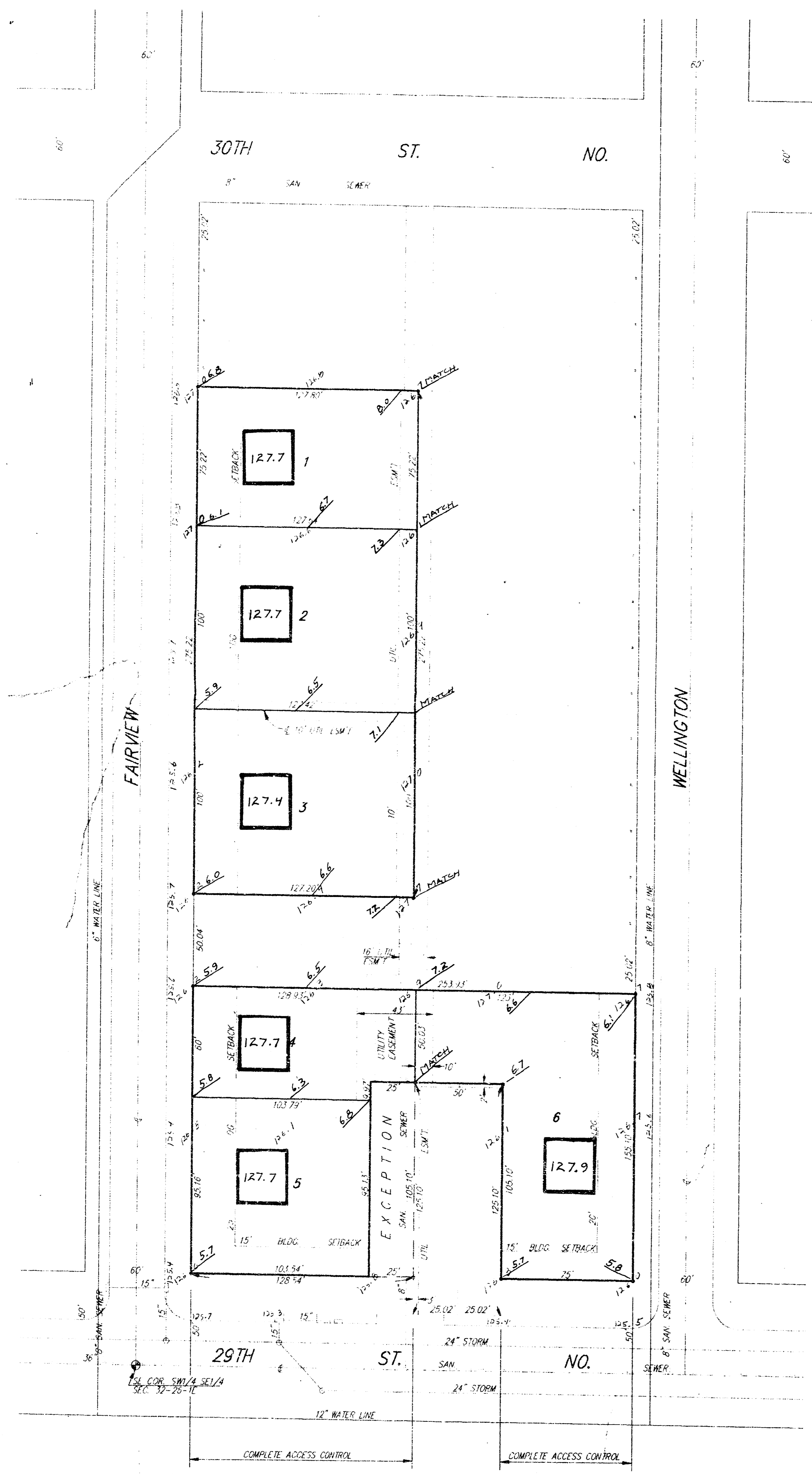
# SKETCH PLAT TRACHTMAN 2ND ADDITION

WICHITA, SEDGWICK COUNTY, KANSAS

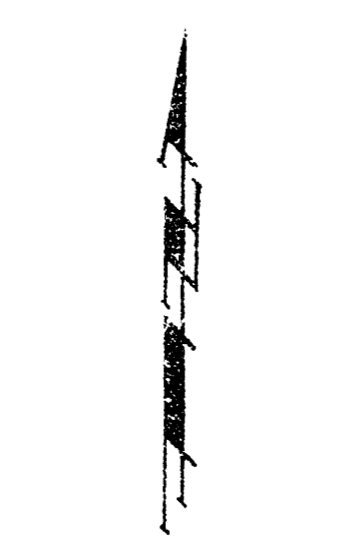
LOTS 2 AND 3, TRACHTMAN ADDITION  
BERNARD H. TRACHTMAN  
& FLORENCE TRACHTMAN

MINNONITE HOUSING REHABILITATION  
SERVICE, INC.

THOMAS A. BISHOP, PRESIDENT  
2145 N. 105TH  
WICHITA, KANSAS 67214  
PH: 265-7515



**Lot Grading Plan**  
Oct. 26. 93



Scale: 1" = 40'  
B.M. - Top corner  
Thumb - 4 29th &  
Fairview - El. 125.47

**APPROVED  
DRAINAGE PLAN**

TRACHTMAN 2<sup>ND</sup>

**BAUGHMAN COMPANY P. A.**  
ENGINEERING & SURVEYING  
316/262-7271 • 315 ELLIS • WICHITA, KANSAS 67211 17 NOV 1992

FILMED FROM THE BEST  
AVAILABLE COPY