

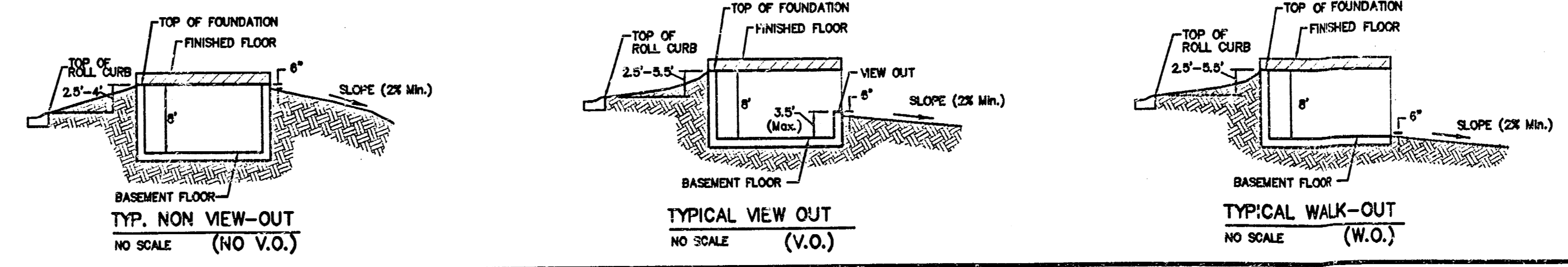
SCALE: 1" = 60'  
• = Iron

BENCHMARK:  
119TH ST. W. & PAWNEE  
CITY OF WICHITA BENCHMARK DISC  
NE. CORNER OF INTERSECTION  
40.00' E. OF E  
30.00' N. OF E  
59.50' N. OF P.P. AT SE. COR.  
OF INTERSECTION  
156.80' NNE. OF E. OF E. CONC.  
HL-DWALL ON CULVERT  
UNDER 119TH ST. W.  
ELEV. = 148.68 CITY DATUM  
(1336.08 NGVD29)  
(PER CITY RECORD)

LOT	BLOCK	ELEVATION CITY DATUM
5-12	B	140.7
13-19	B	140.9
23,21,34	B	141.0
35	B	142.0
36	B	142.5
37	B	143.0
38	B	143.5
39-41	B	144.0
42-44	B	144.2
45-47	B	144.7
48-50	B	145.0
51-53	B	145.2
54-57	B	145.5

**APPROVED DRAINAGE PLAN**

NOTE:  
Proposed top of foundation are shown on plans. Contractor to finish floor elevation.  
All street elevations shown on plans are for top of curb (full height).  
View-out elevations are denoted as XX.X V.O.  
Walk-out elevations are denoted as XX.X W.O.  
CONTOUR INTERVAL = 1 FT.  
● - Denotes the Possibility of Deep Foundations



**Baughman Grading Plan**  
City of Wichita, Kansas

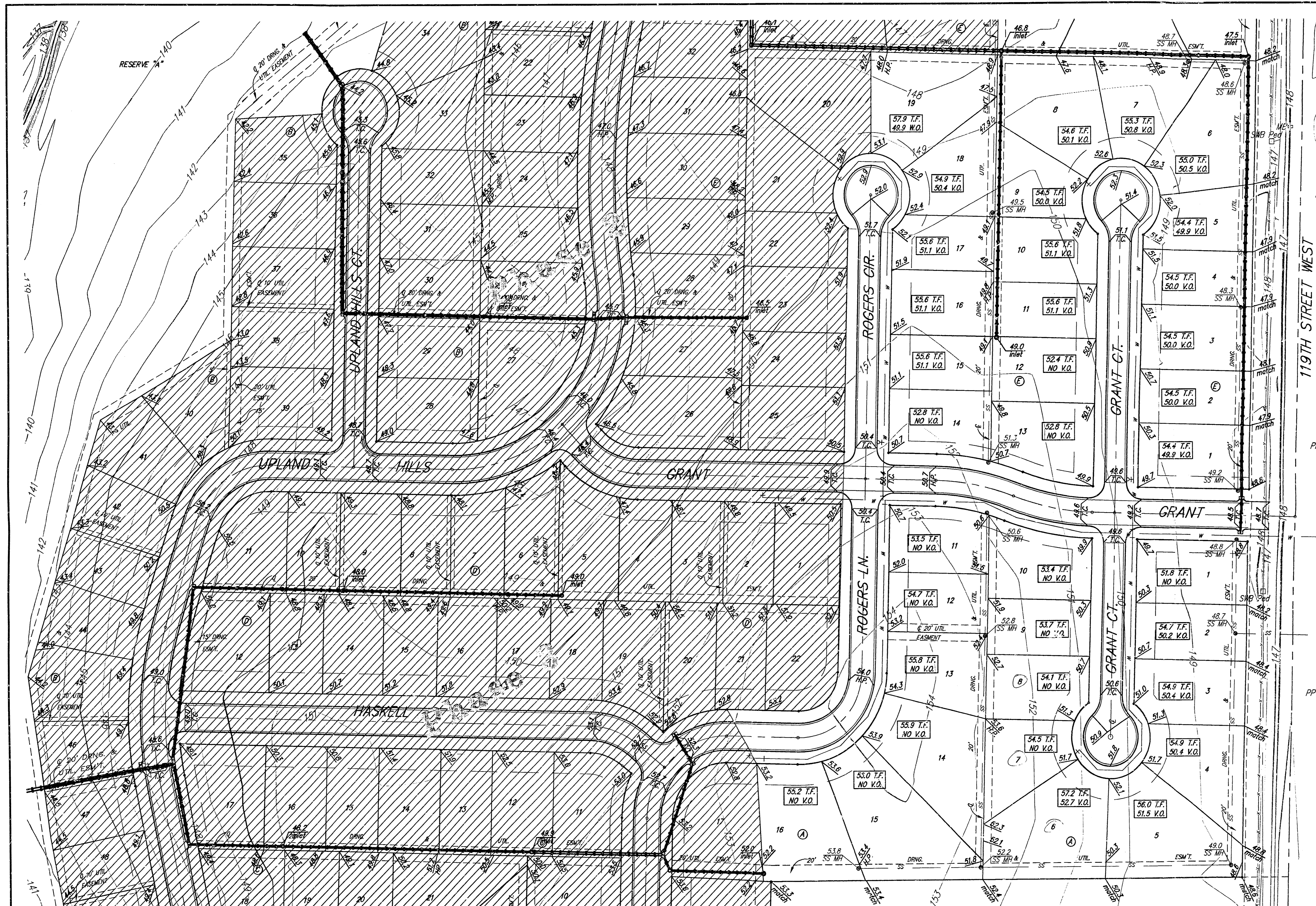
Project: Turkey Creek 2nd Addition

Revisions:  
April 22, 2004 MW'S  
June 3, 2005 MW'S

Scale: 1" = 60'

Sheet: 1 OF 3

FILED: Turkey Creek 2nd Addition  
PLAT CALD WALKED IN MAY 2005

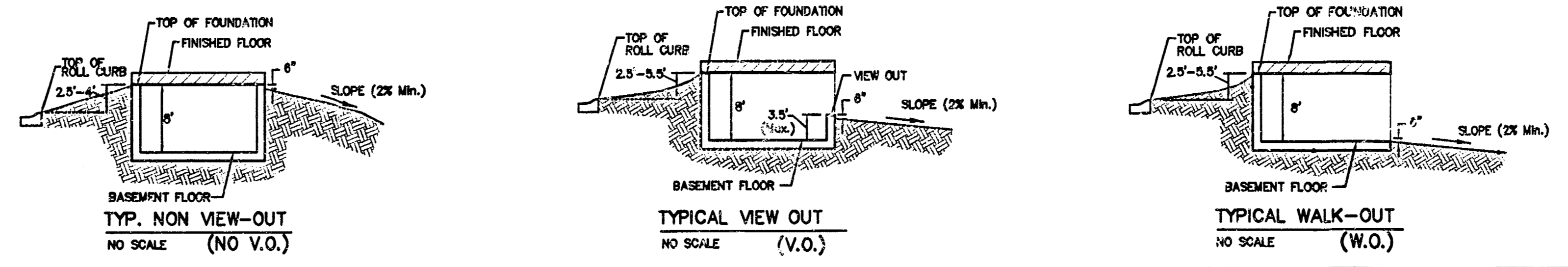


SCALE: 1" = 60'  
 • = Iron

BENCHMARK:  
 119TH ST. W. & PAWNEE  
 CITY OF WICHITA BENCHMARK DISC  
 NE CORNER OF INTERSECTION  
 40.00' E. OF E  
 30.00' N. OF E  
 53.50' N. OF P.P. AT SE COR.  
 OF INTERSECTION  
 156.80' NNE. OF E. OF E. CONC.  
 HEADWALL ON CULVERT  
 UNDER 119TH ST. W.  
 ELEV. = 148.68 CITY DATUM  
 (1336.08 NGVD29)  
 (PER CITY RECORD)

LOT	BLOCK	ELEVATION CITY DATUM
5-12	B	140.7
13-19	B	140.9
20,21,34	B	141.0
35	B	142.0
36	B	142.5
37	B	143.0
38	B	143.5
39-41	B	144.0
42-44	B	144.2
45-47	B	144.7
48-50	B	145.0
51-53	B	145.2
54-57	B	145.5

NOTE:  
 Proposed top of foundation are shown on plans. Contractor to set finish floor elevation.  
 All street elevations shown on plans are for top of curb (full height).  
 View-out elevations are denoted as XX.X V.O.  
 Walk-out elevations are denoted as XX.X W.O.  
 CONTOUR INTERVAL = 1 FT.  
 • - Denotes the Possibility of Deep Foundations



**Baughman** Turkey Creek 2nd Addition  
**Grading Plan**  
 City of Wichita, Kansas

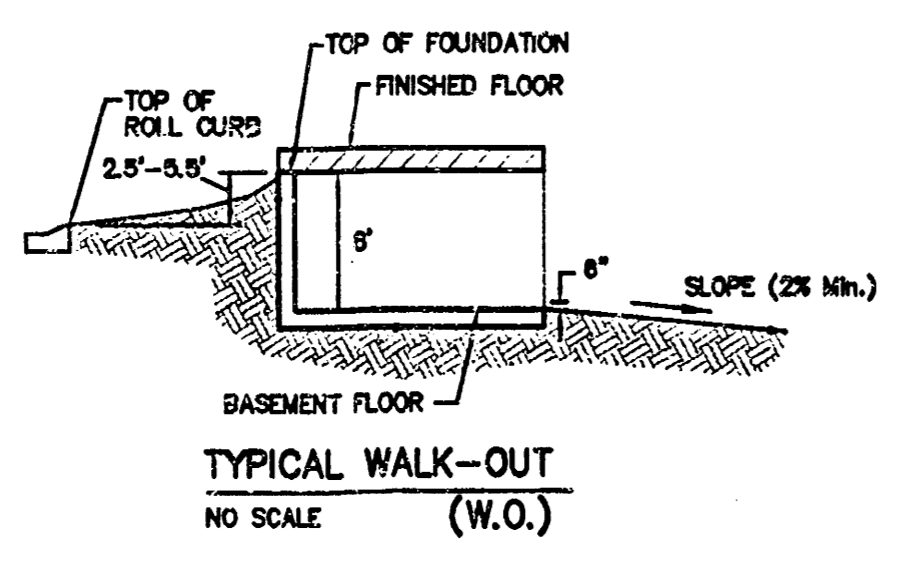
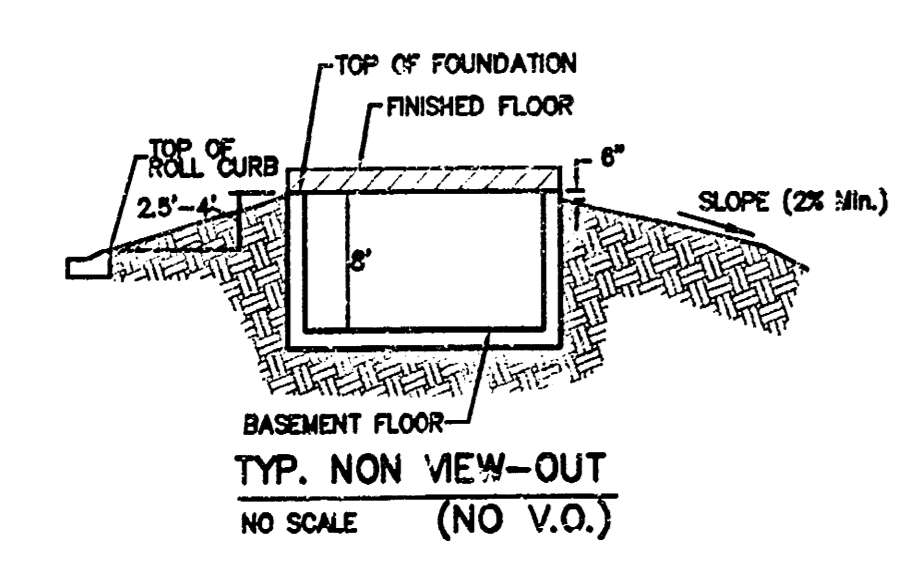
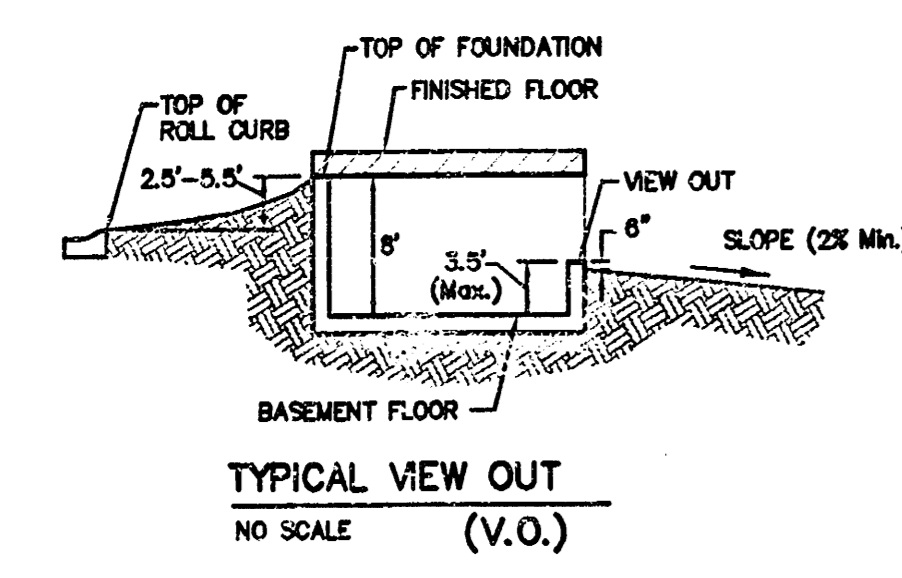
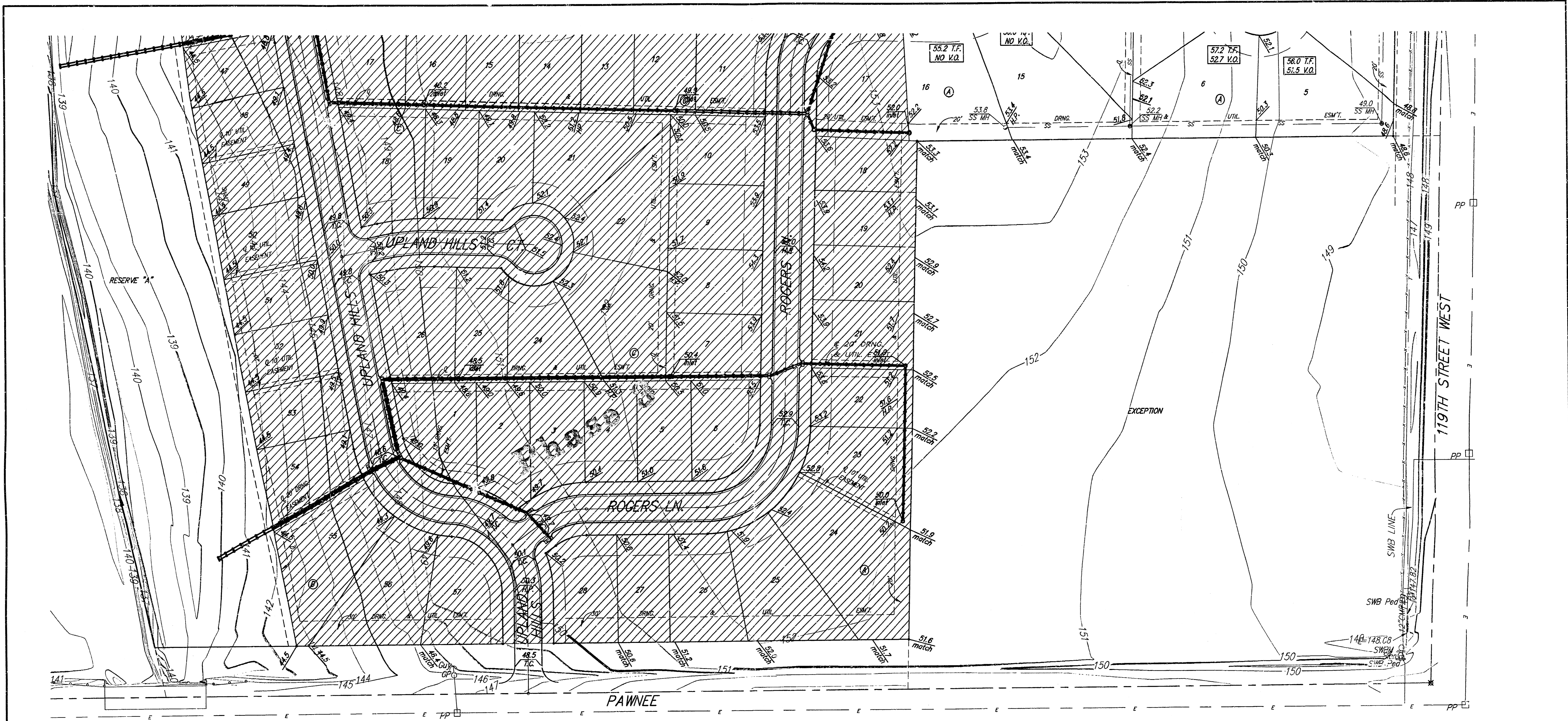
Baughman Company, P.A. 315 Ellis St. Wichita, KS 67211 P: 316-262-7271 F: 316-262-0149  
 ENGINEERING | SURVEYING | PLANNING | LANDSCAPE ARCHITECTURE

PROJECT NUMBER	DESIGN	DATE
	BLU/VA(MWS)	02/04

REVISIONS	DATE
April 22, 2004 MWS	
June 3, 2005 MWS	

SCALE: Noted  
 SHEET: 2 OF 3

F:\Grading\Turkey Creek\grade.dwg



**NOTE:**  
Proposed top of foundation are shown on plans. Contractor to set finish floor elevation.  
All street elevations shown on plans are for top of curb (full height).  
View-out elevations are denoted as XX.X V.O.  
Walk-out elevations are denoted as XX.X W.O.  
CONTOUR INTERVAL = 1 FT.  
● - Denotes the Possibility of Deep Foundations

**MINIMUM BUILDING PAD ELEVATIONS FOR LOWEST OPENING TO THE STRUCTURES**

LOT	BLOCK	ELEVATION CITY DATUM
5-12	B	140.7
15-19	B	140.9
20,21,34	B	141.0
35	2	142.0
36	B	142.5
37	B	143.0
38	B	143.5
39-41	B	144.0
42-44	B	144.2
45-47	B	144.7
48-50	B	145.0
51-53	B	145.2
54-57	B	145.5

**BENCHMARK:**  
119TH ST. W. & PAWNEE  
CITY OF WICHITA BENCHMARK DISC  
NE CORNER OF INTERSECTION  
40.00' E. OF &  
30.00' N. OF P.P. AT SE. COR.  
59.50' N. OF P.P. AT SE. COR.  
HEADWALL ON CULVERT  
UNDER 119TH ST. W.  
ELEV. = 148.68 CITY DATUM  
(1336.08 NGVD29)  
(PER CITY RECORD)

**SCALE: 1" = 60'**  
• = Iron

<b>Baughman</b> Grading Plan City of Wichita, Kansas		Turkey Creek 2nd Addition City of Wichita, Kansas	
		PROJECT NUMBER REVISIONS April 22, 2004 MWS June 3, 2005 MWS Revised T.F. and V.O. grades Revised T.F. and V.O. grades from 1 only	DESIGN BLG/MWS APPROVED DATE 02/04
		<b>3 OF 3</b>	