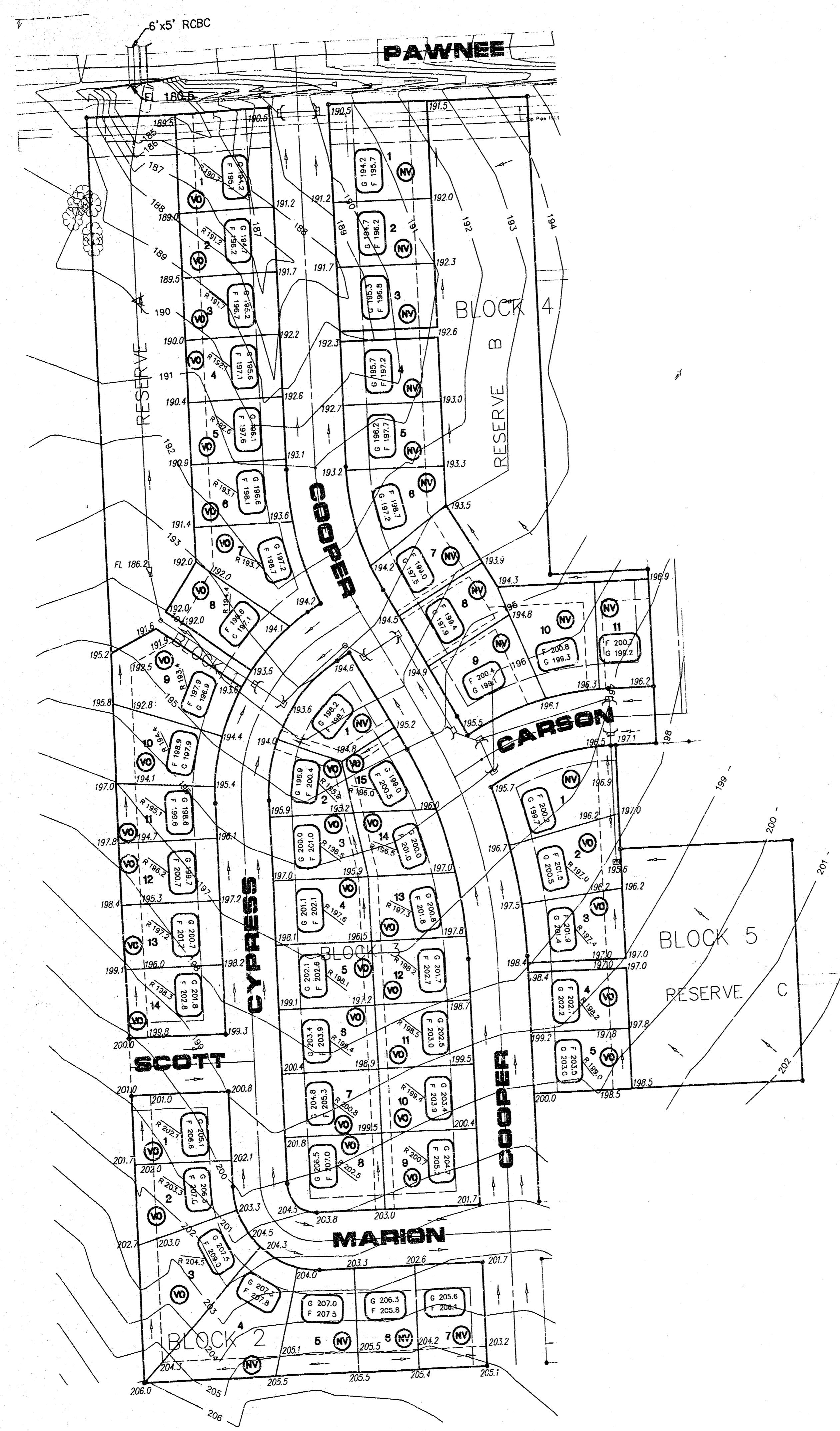


ELEVATIONS SHOWN AT STREET R/W ARE STREET R/W ELEVATIONS NOT TOP OF CURB. TOP OF CURB ELEVATIONS ARE 0.5' LOWER THAN STREET R/W.



NOTES

1. THIS GRADING PLAN IS SUBJECT TO CHANGE TO MATCH FINAL PAVING AND DRAINAGE PLANS.
2. FRONT LOT CORNER ELEVATIONS ARE SHOWN IN STREET. FRONT LOT CORNER ELEVATIONS ARE 0.5 FEET ABOVE TOP OF CURB ELEVATION. (TOP OF CURB ELEVATIONS ARE NOT SHOWN!!!)
3. GARAGE FLOOR ELEVATIONS ARE SET 3' ABOVE HIGHEST FRONT LOT CORNER ELEVATION (TYPICALLY).

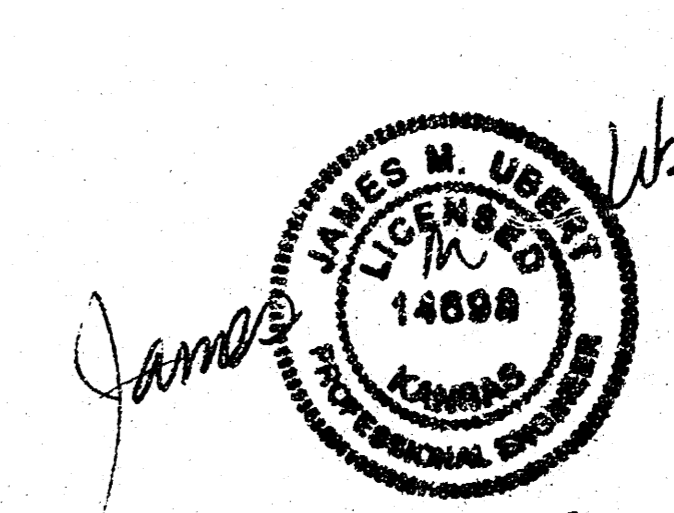
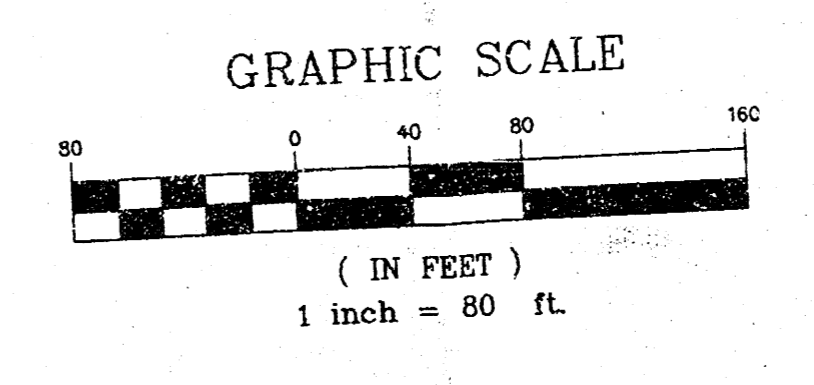
LEGEND

- G = GARAGE FLOOR ELEVATION
- F = TOP OF FOUNDATION WALL ELEVATION
- R = REAR WALL ELEVATION (VIEW OUT)
(REAR WALL IS 3.5' ABOVE BASEMENT FLOOR)
- ⊙ = NO VIEW OUT
- ⊗ = VIEW OUT

BENCHMARKS

- (City of Wichita Datum)
1. City of Wichita Std. BM disc at Webb & Pawnee, 53' S. & 47' W. centerline of both. Elev. 205.68
 2. "d" on headwall (SE corner South Headwall), 5' x 5' RCB under Pawnee approximately 1300' W. of NE Corner Sec. 5-285-2E. Elev. 186.94
 3. 40d nail in service pole approximately 1330' S. and 150' W. of NE Corner Sec. 5-285-R2E. Elev. 204.69

**APPROVED
DRAINAGE PLAN**



7-8-98

TURTLE RUN 3RD
REVISION 3RD
OF APRIL 1998

PE POE & ASSOCIATES OF KANSAS, INC.
CONSULTING ENGINEERS
1840 E. CENTRAL, SUITE 200 W. P.O. BOX 45, WICHITA, KS 67208-0045 • TEL: 316/685-1414 • FAX: 316/685-1444

**LOT GRADING PLAN
TURTLE RUN 3RD ADDITION
TO WICHITA, SEDGWICK COUNTY, KANSAS**

REVISED: APRIL 16, 1998
FEBRUARY 2, 1996

NE 1/4, SECTION, T28S, R2E

F:\APPROVALS\1998\19980416\19980416.dwg Plot Jul 08 10:35:16 1998 James M. Ubert, Poe & Associates of Kansas, Inc.