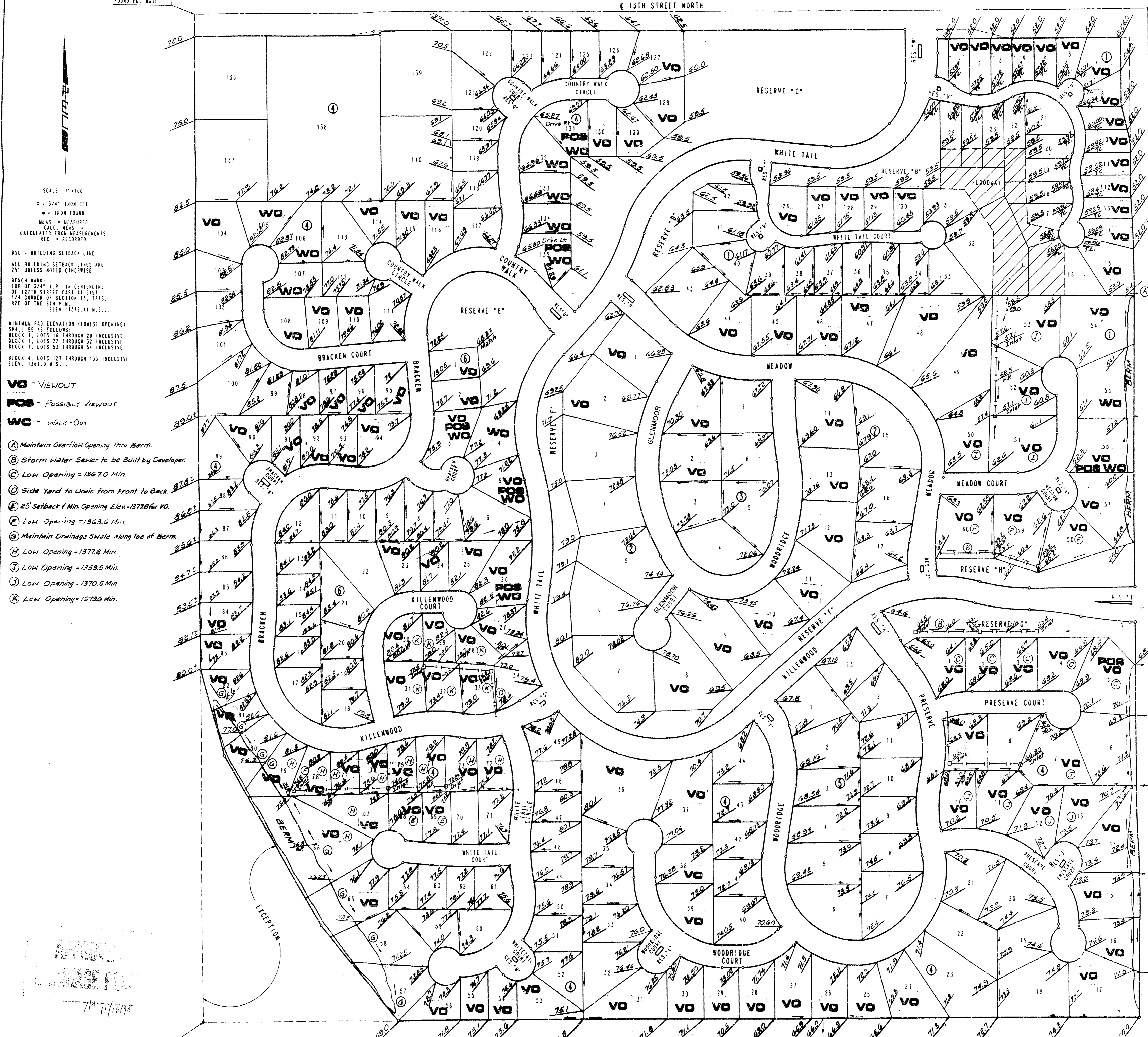


# FOUR CORNER LOT GRADING PLAN WHITE TAIL ADDITION TO SEDGWICK COUNTY, KANSAS

NW CORNER, NE 1/4  
SEC. 15, T27S, R2E  
OF THE 6TH P.M.  
FOUND P.M. WALK

NE CORNER, NE 1/4  
SEC. 15, T27S, R2E  
OF THE 6TH P.M.  
FOUND 1/2" I.P.



SCALE: 1"=100'  
 ○ 3/4" IRON SET  
 ● IRON FOUND  
 MEAS. - MEASURED  
 CALC. MEAS. - CALCULATED FROM MEASUREMENTS  
 REC. - RECORDED

BSL - BUILDING SETBACK LINE  
 ALL BUILDING SETBACK LINES ARE 25' UNLESS NOTED OTHERWISE

BENCH MARK:  
 TOP OF 3/4" I.P. IN CENTERLINE  
 OF 12TH STREET EAST AT EAST  
 1/4 CORNER OF SECTION 15, T27S,  
 R2E OF THE 6TH P.M.  
 ELEV. 1372.44 M.S.L.

MINIMUM PAD ELEVATION (LOWEST OPENING)  
 SHALL BE AS FOLLOWS:  
 BLOCK 1, LOTS 16 THROUGH 20 INCLUSIVE  
 BLOCK 2, LOTS 22 THROUGH 25 INCLUSIVE  
 BLOCK 3, LOTS 33 THROUGH 34 INCLUSIVE  
 BLOCK 4, LOTS 127 THROUGH 135 INCLUSIVE  
 ELEV. 1361.0 M.S.L.

- VO - VIEWOUT
  - POS - POSSIBLY VIEWOUT
  - WO - WALK-OUT
- Ⓐ Maintain Overflow Opening Thru Berm.
  - Ⓑ Storm Water Saver to be Built by Developer.
  - Ⓒ Low Opening = 1367.0 Min.
  - Ⓓ Side Yard to Drain from Front to Back
  - Ⓔ 25' Setback & Min. Opening Elev. = 1372.6 for VO.
  - Ⓕ Low Opening = 1363.6 Min.
  - Ⓖ Maintain Drainage Swale along Toe of Berm.
  - Ⓗ Low Opening = 1377.8 Min.
  - Ⓙ Low Opening = 1359.5 Min.
  - Ⓚ Low Opening = 1370.5 Min.
  - Ⓛ Low Opening = 1373.6 Min.

APPROVAL  
 LANDGRAB PLAN  
 JH 11/16/98

WH TAIL ADDITION  
 (ORIGINALLY STARTED IN COUNTY -  
 ANNEXED LATE 1977 TO FEB 1980)

SE CORNER, NE 1/4  
 SEC. 15, T27S, R2E  
 OF THE 6TH P.M.  
 FOUND 3/4" I.P.

Rev. 2/12/94  
 Rev. 2/12/95  
 Rev. 11/15/95  
 Rev. 3/7/95  
 Rev. 4/11/94  
 11/23/93