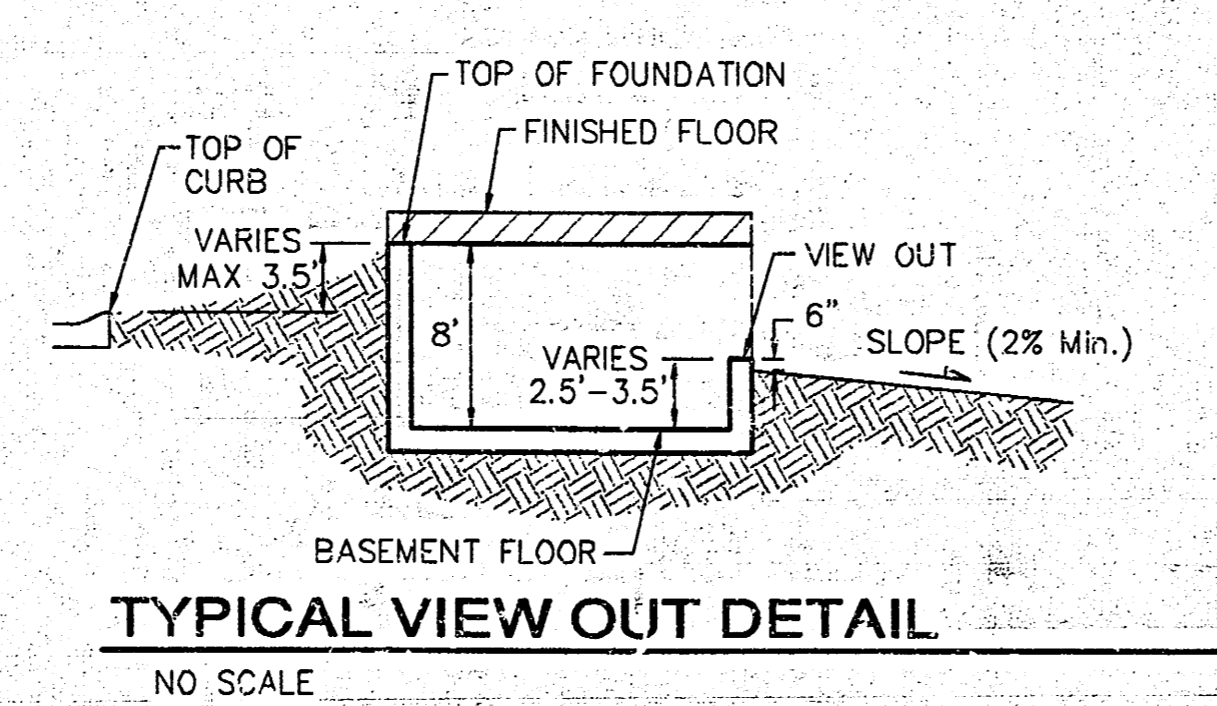
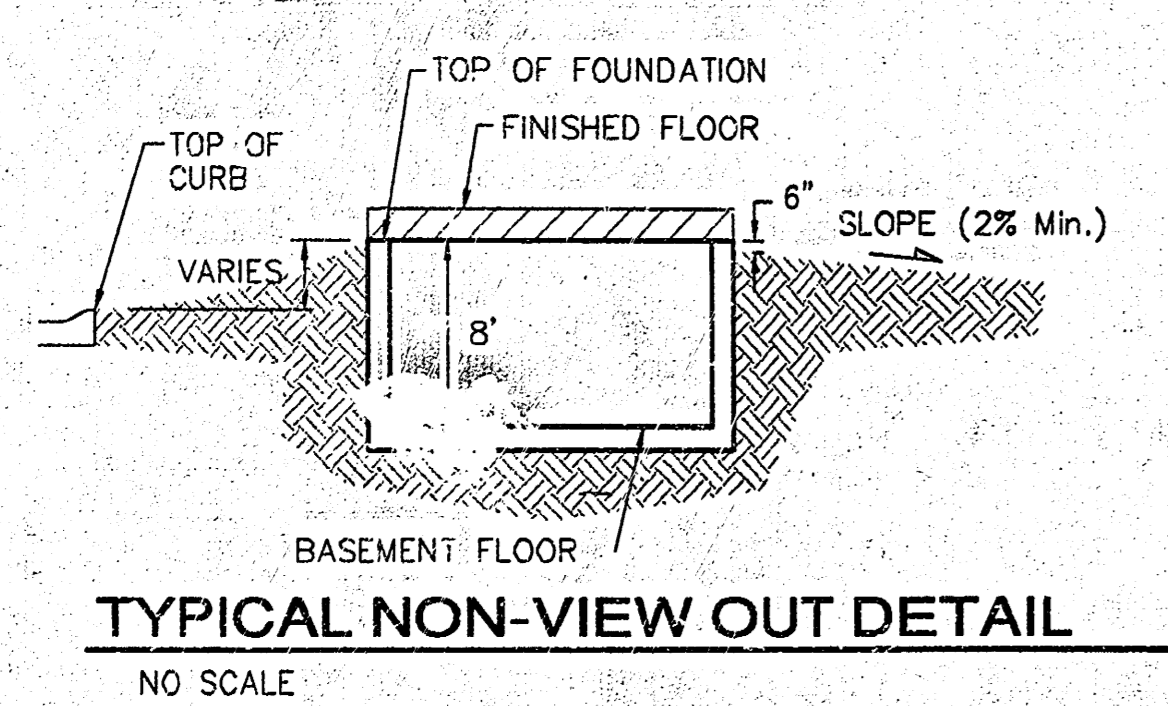
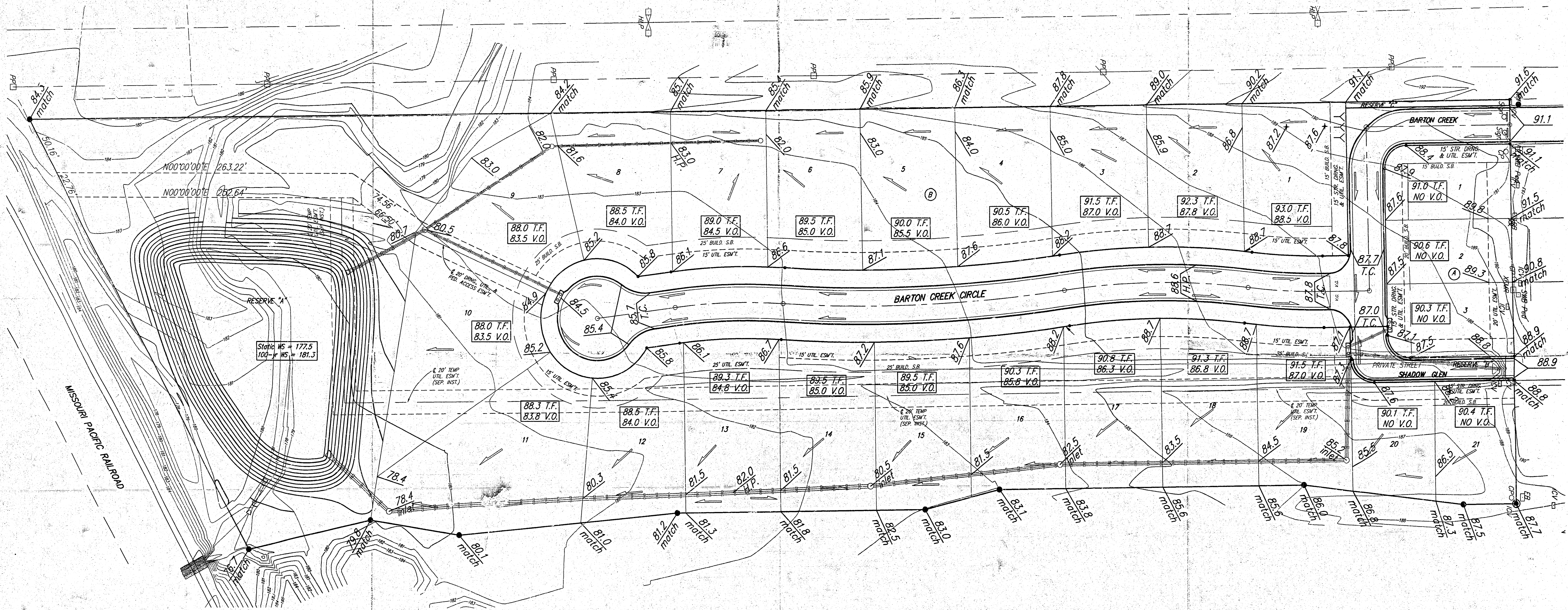
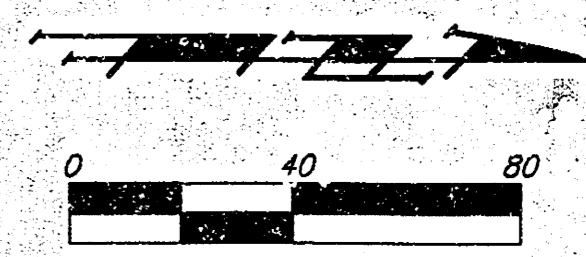


**BENCHMARK:**  
 □ Top of Curb, ENE Curb return,  
 Barton Creek & Castle Pines St.,  
 Lev. = 196.79 City Datum  
 (1384.19 NCVD29)



**NOTES:**  
 Proposed Top of Foundation Elevations Are Shown On Plans. Contractor to Set Finished Floor Elevations.  
 All Street Elevations Shown on Plans Are for Top of Curb (Full-Height).  
 This Grading Plan is Designed with View-Outs. Elevations Shown at Rear of House (XX.X V.O.)  
 Lot dimensions have been omitted on this plan, refer to the recorded plat for this information.

Submitted on 2/21/06  
**APPROVED DRAINAGE PLAN**  
 JCA

Revised V.O. Lot 1, Block B 02/08/05 by JAK  
 Revised V.O. Lot 2, Block B 04/13/04 by MWS  
 Revised T.F. Lots 2-3, Block A S, 2/29/03 by AEG

WILLOWBEND NORTH ESTATES 2ND ADD.  
**GRADING PLAN**  
 WICHITA, KANSAS  
**BAUGHMAN COMPANY P.A.**  
 ENGINEERING, SURVEYING, & PLANNING  
 316-262-7271 • 315 ELLIS • WICHITA, KANSAS 67211

DESIGN	DRAWN	APPROVED	DATE	SCALE
BLG/MW	BLG/SMD		04-21-03	NOTED

PROJECT NUMBER: \_\_\_\_\_ SHEET 1 OF 1  
 GRADE