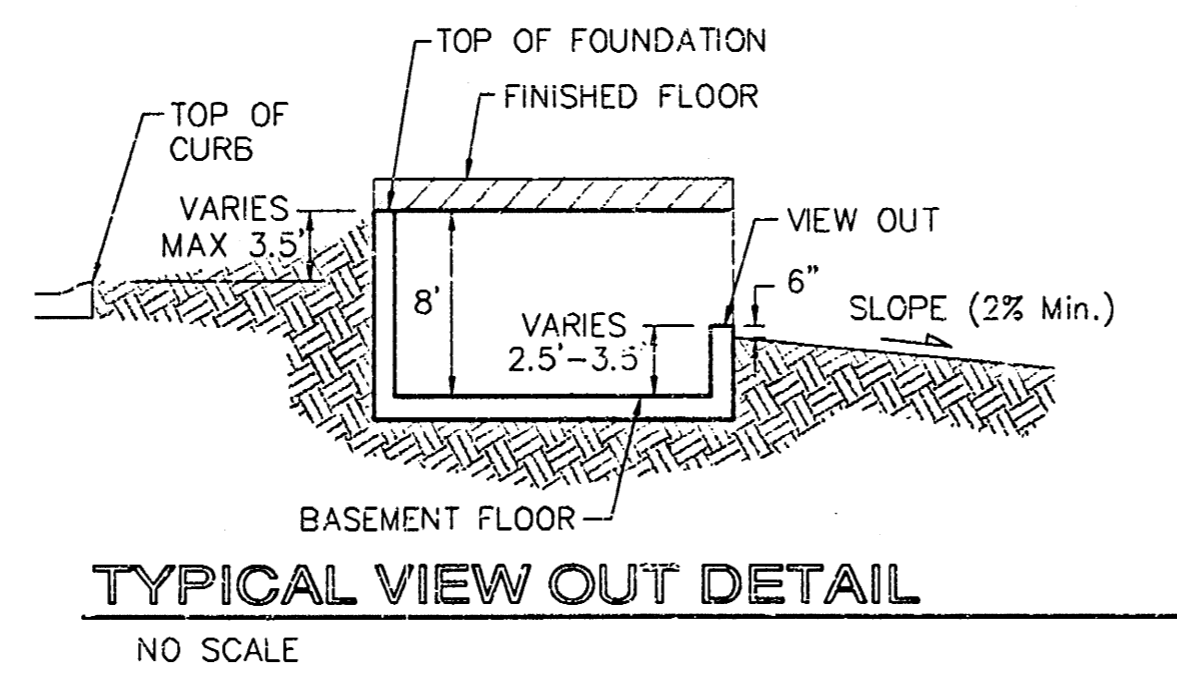
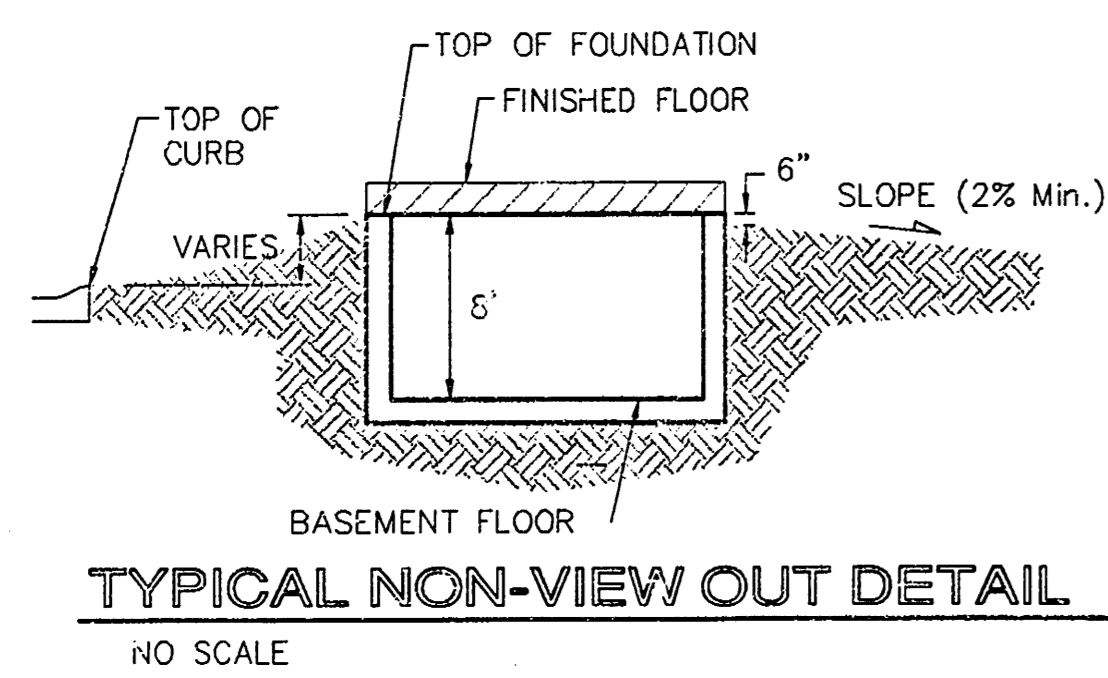
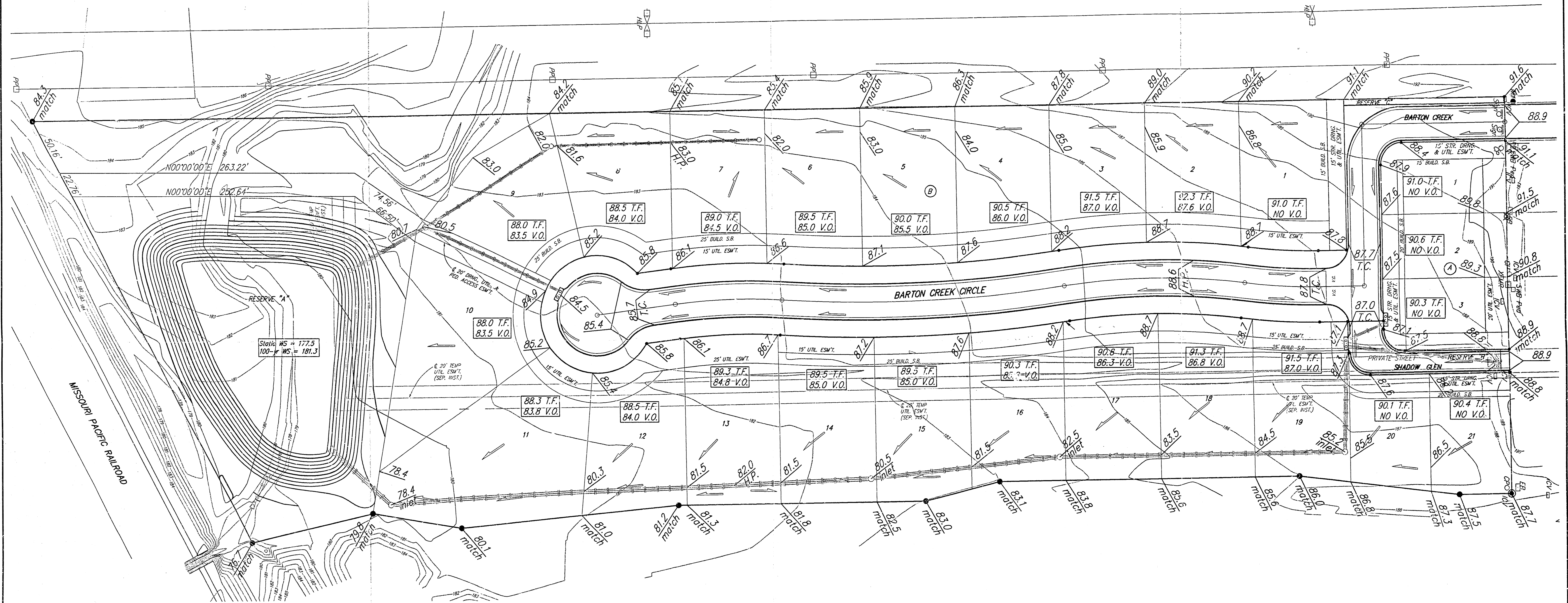
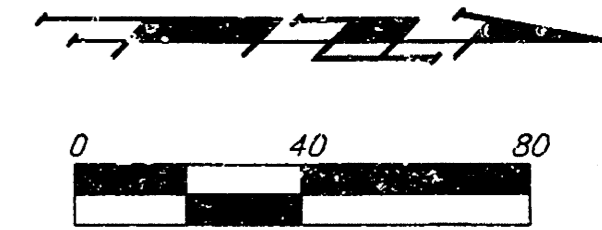


BENCHMARK:
 "□" Top of Curb, ENE Curb return,
 Barton Creek & Castle Pines St.,
 Elev. = 196.79 City Datum
 (1304.19 NSVD29)



NOTES:
 Proposed Top of Foundation Elevations Are Shown On Plans. Contractor to Set Finished Floor Elevations.

All Street Elevations Shown on Plans Are for Top of Curb (Full-Height).

This Grading Plan is Designed with View-Outs. Elevations Shown at Rear of House (XX.X V.O.)

Lot dimensions have been omitted on this plan, refer to the recorded plat for this information.

**APPROVED
 DRAINAGE PLAN**

Revised T.F. Lots 2-3, Block A 9/29/03 by AEG

**WILLOWBEND NORTH ESTATES 2ND ADD.
 GRADING PLAN**
 WICHITA, KANSAS

BAUGHMAN COMPANY P.A.
 ENGINEERING, SURVEYING, & PLANNING
 316-262-7271 • 315 E. LUIS • WICHITA, KANSAS 67211

DESIGN	DRAWN	APPROVED	DATE	SCALE	SHEET
BLC/NBW	BLG/SMD		04-21-03	NOTED	1
					OF 1