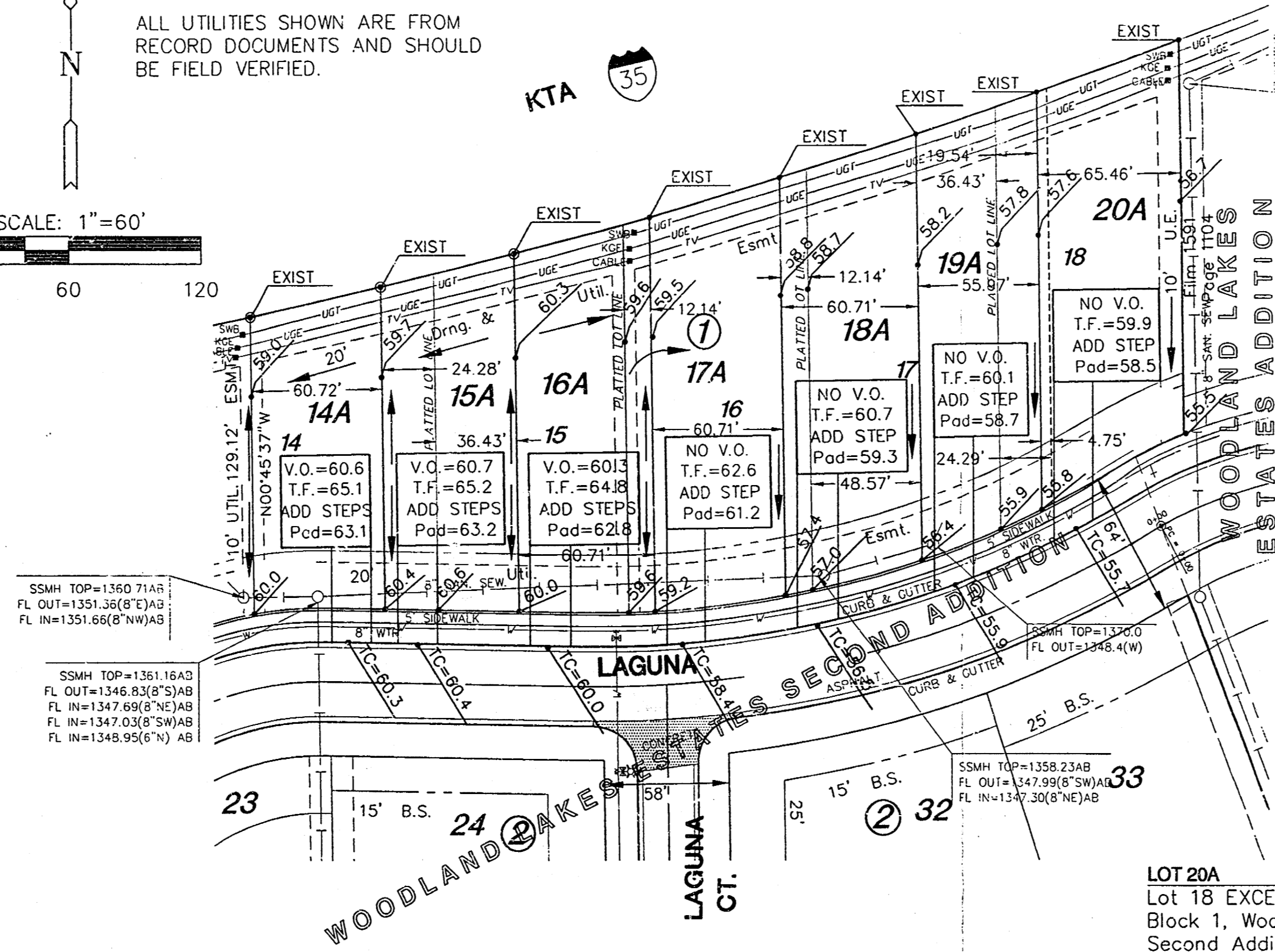
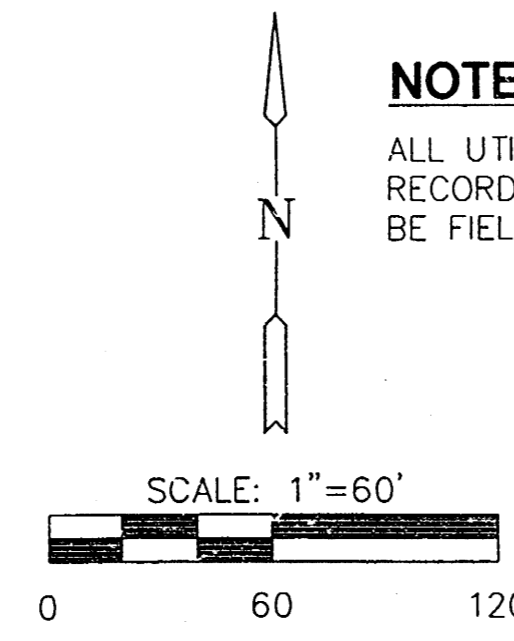


NOTE:
ALL UTILITIES SHOWN ARE FROM
RECORD DOCUMENTS AND SHOULD
BE FIELD VERIFIED.



**APPROVED
DRAINAGE PLAN**

LOT 20A
Lot 18 EXCEPT the West 24.29 feet,
Block 1, Woodland Lakes Estates
Second Addition, an addition to
Wichita, Sedgwick County, Kansas.
AND ALSO,
The East 4.75 feet of the West 24.29
feet of Lot 18, Block 1, said addition.

LEGEND

- SSMH - SANITARY SEWER MANHOLE
- WATER LINE
- SANITARY SEWER LINE
- TELEPHONE LINE
- UNDERGROUND ELECTRIC LINE
- UNDERGROUND CABLE TV LINE

LEGAL DESCRIPTIONS

LOT 14A
The West 52.50 feet of Lot 14, Block
1, Woodland Lakes Estates Second
Addition, an addition to Wichita,
Sedgwick County, Kansas.
AND ALSO,
The West 8.22 feet of the East 32.50
feet of said Lot 14, Block 1.

LOT 15A
All of Lot 14, Block 1, Woodland
Lakes Estates Second Addition, an
addition to Wichita, Sedgwick County,
Kansas; EXCEPT, the West 60.72 feet
AND ALSO,
The West 36.43 feet of Lot 15, Block
1, said Woodland Lakes Estates
Second Addition.

LOT 16A
Lot 15 EXCEPT the West 36.43 feet
and the West 12.14 feet of Lot 16,
Block 1, Woodland Lakes Estates
Second Addition, an addition to
Wichita, Sedgwick County, Kansas.

LOT 17A
Lot 16 EXCEPT the West 12.14 feet
and EXCEPT the East 12.14 feet,
Block 1, Woodland Lakes Estates
Second Addition, an addition to
Wichita, Sedgwick County, Kansas.

LOT 18A
The East 12.14 feet of Lot 16 and
the West 48.57 feet Lot 17, Block 1,
Woodland Lakes Estates Second
Addition, an addition to Wichita,
Sedgwick County, Kansas.

LOT 19A
Lot 17 EXCEPT the West 48.57 feet
and also; the West 19.54' Lot 18, Block
1, Woodland Lakes Estates Second
Addition, an addition to Wichita,
Sedgwick County, Kansas; EXCEPTING
the East 65.46', said Lot 18.

**WOODLAND LAKES ESTATES
SECOND ADDITION**
REVISED GRADING DUE TO LOT SPLIT
LOTS 14, 15, 16, 17 & 18, BLOCK 1

MKEC
ENGINEERING
CONSULTANTS

DATE	BY	CHECKED BY
MARCH 2003	97158	1 / 1