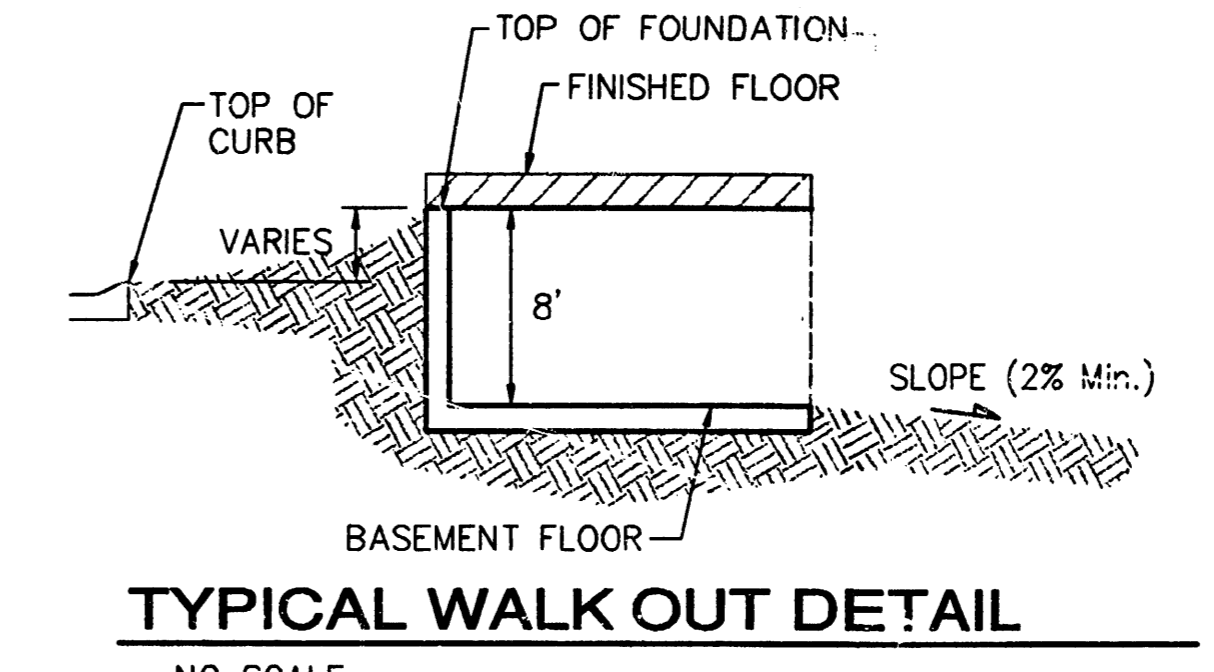
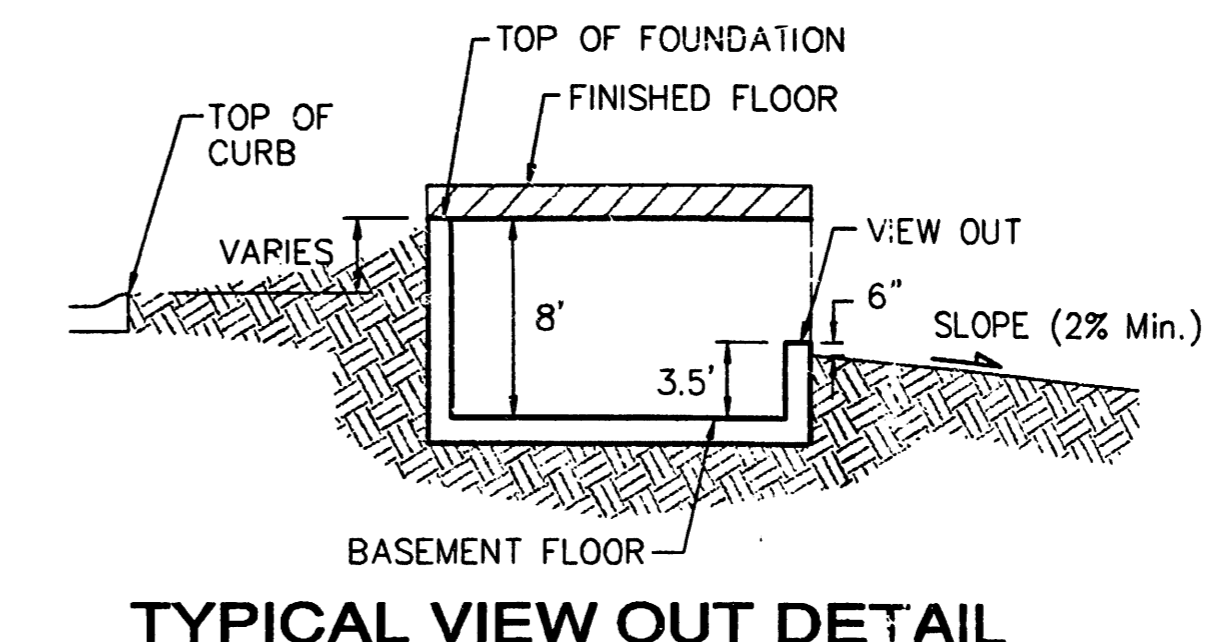
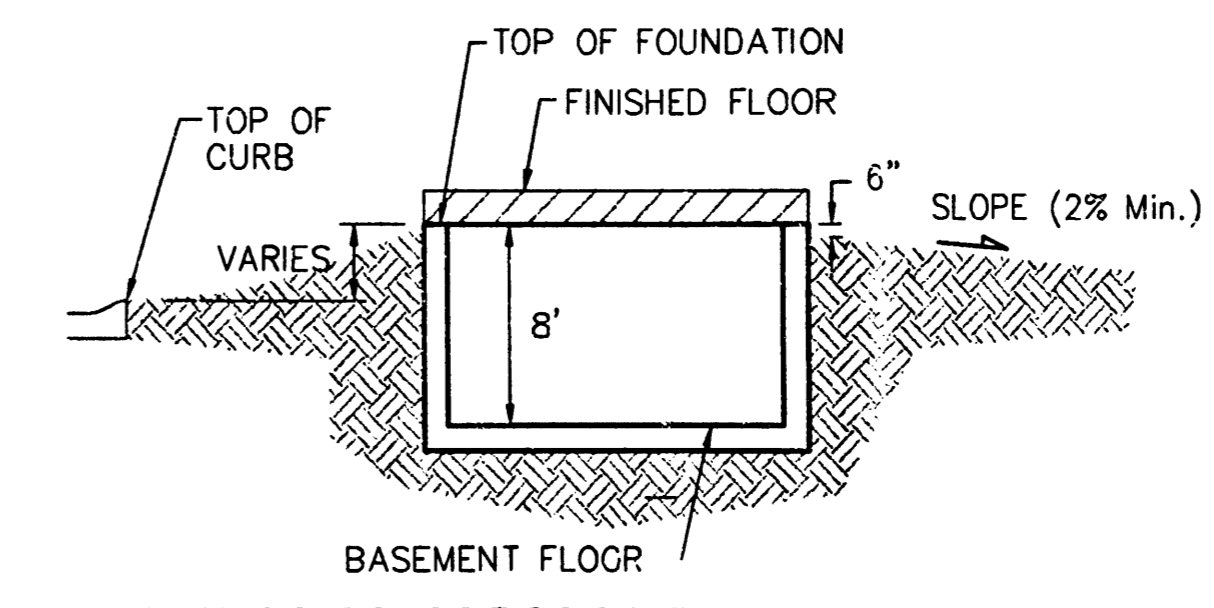
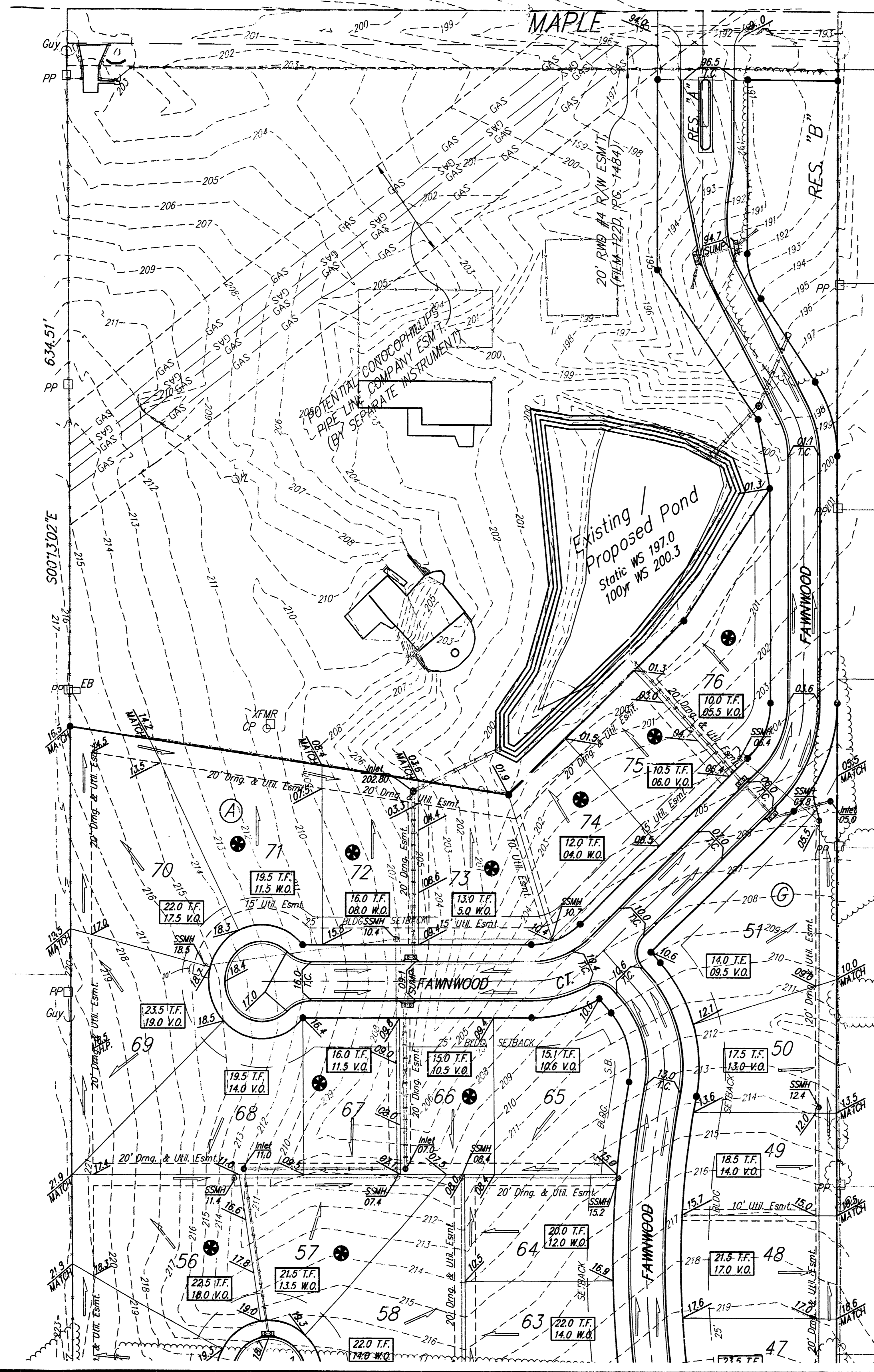
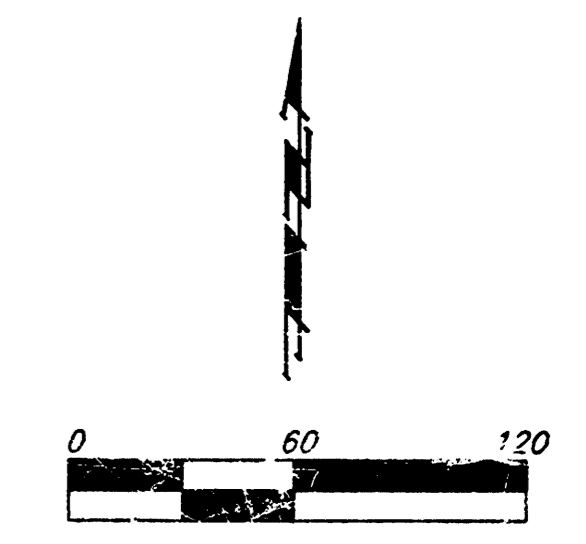


BENCHMARKS:
 BM #1: "C" Cut on Top of Curb at West Line of Lot 7, Block A, Auburn Hills 5th Addition. Elev. = 207.73 (City Datum)
 BM #2: Disc in Back of Curb, North of Front Corner Common to Lots 23 and 24, Block D, Auburn Hills 12th Addition. Elev. = 191.84 (City Datum)
 BM #3: "C" Cut in Middle of Curb Inlet Top Adjacent to the South Corner of Lot 15, Block B. Elev. = 196.44 (City Datum)



**APPROVED
 DRAINAGE PLAN**



- NOTES:**
- PROPOSED TOP OF FOUNDATION ELEVATIONS ARE SHOWN ON PLANS. CONTRACTOR TO SET FINISHED FLOOR AND GARAGE FLOOR ELEVATIONS. ALL STREET ELEVATIONS SHOWN ON PLANS ARE FOR TOP OF CURB (FULL-HEIGHT).
 - THIS GRADING PLAN IS DESIGNED WITH VIEW-OUTS AND WALK-OUTS. ELEVATIONS SHOWN AS XXX V.O. DEPICT VIEW-OUT STRUCTURES. ELEVATIONS SHOWN AS XXX W.O. DEPICT WALK-OUT STRUCTURES.
 - ALL LOTS SHALL MEET MINIMUM PAD REQUIREMENT AS SHOWN ON THE RECORDED PLAT.

LOT	BLOCK	ELEVATION	
		CITY DATUM	NGVD29
1-4	A	206.5	1393.9
15-17	A	206.5	1393.9
24-29	A	206.5	1393.9
70-76	A	202.3	1389.7
13-17	E	196.0	1383.4
24-31	E	196.0	1383.4
1-8	G	195.9	1383.3

- LOT DIMENSIONS HAVE BEEN OMITTED ON THIS PLAN. REFER TO THE RECORDED PLAT FOR FINAL DIMENSION, EASEMENT, & BUILDING SETBACK INFORMATION.
- HOUSE PAD ELEVATIONS DEPICTED WITH BOLD OUT-LINES AND NOTED WITH THIS SYMBOL INDICATE THAT DEEP FOOTINGS OR DEEP FOUNDATIONS MAY BE REQUIRED.
- A DRAINAGE PLAN HAS BEEN DEVELOPED FOR THIS SUBDIVISION AND IS ON FILE WITH THE CITY OF WICHITA, KANSAS. DRAINAGE INTENT SHALL REMAIN AS DEPICTED OR AS MODIFIED WITH THE APPROVAL OF THE CITY ENGINEER OF THE CITY OF WICHITA, KANSAS. NO OBSTRUCTIONS WHICH IMPEDE THE FLOW OF THIS DRAINAGE PLAN SHALL BE ALLOWED.
- ALL ELEVATIONS SHOWN ARE IN CITY OF WICHITA DATUM.

PRELIMINARY GRADING FOR FUTURE PHASES



AUBURN HILLS 16th

Baughman Auburn Hills 16th
Grading Plan
 Wichita, Sedgewick County, Kansas

ENGINEERING | SURVEYING | PLANNING | LANDSCAPE ARCHITECTURE

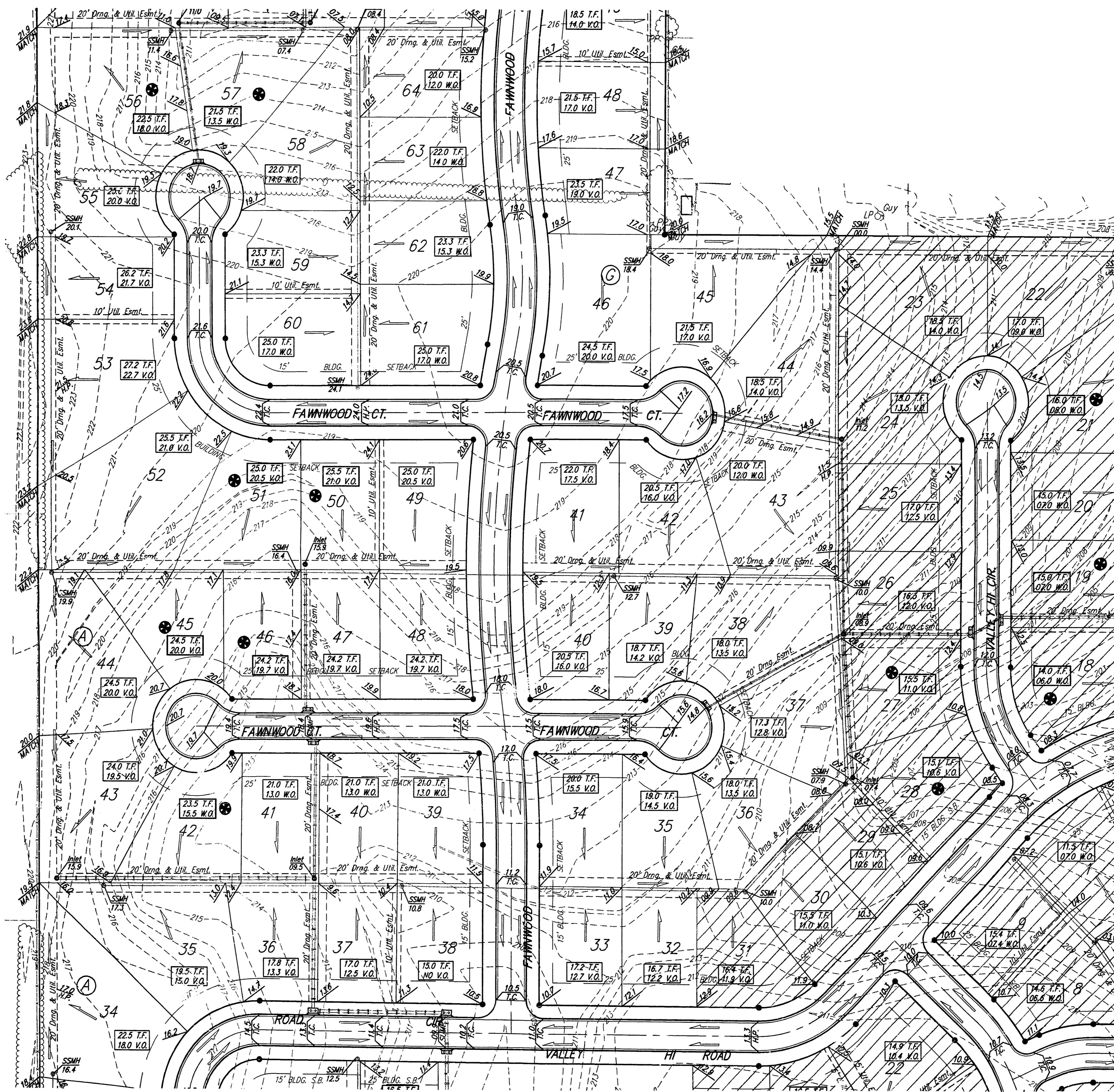
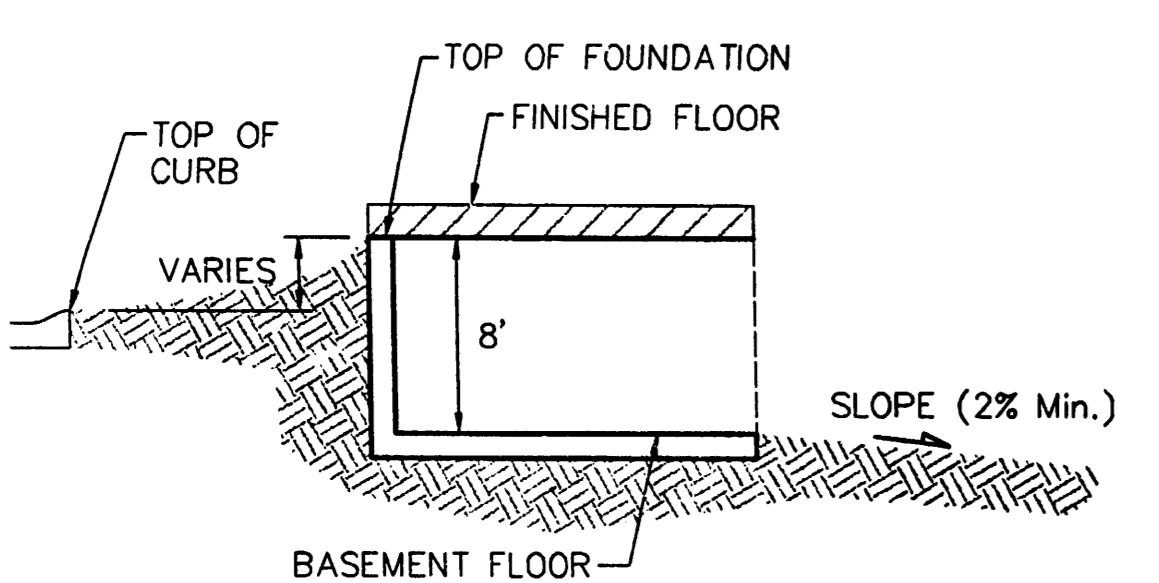
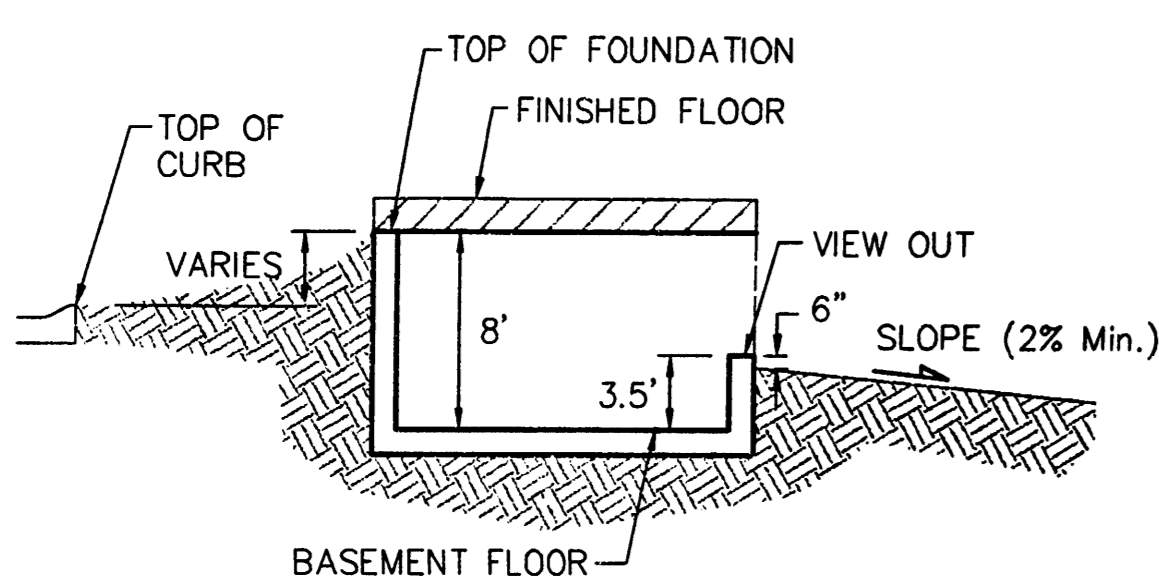
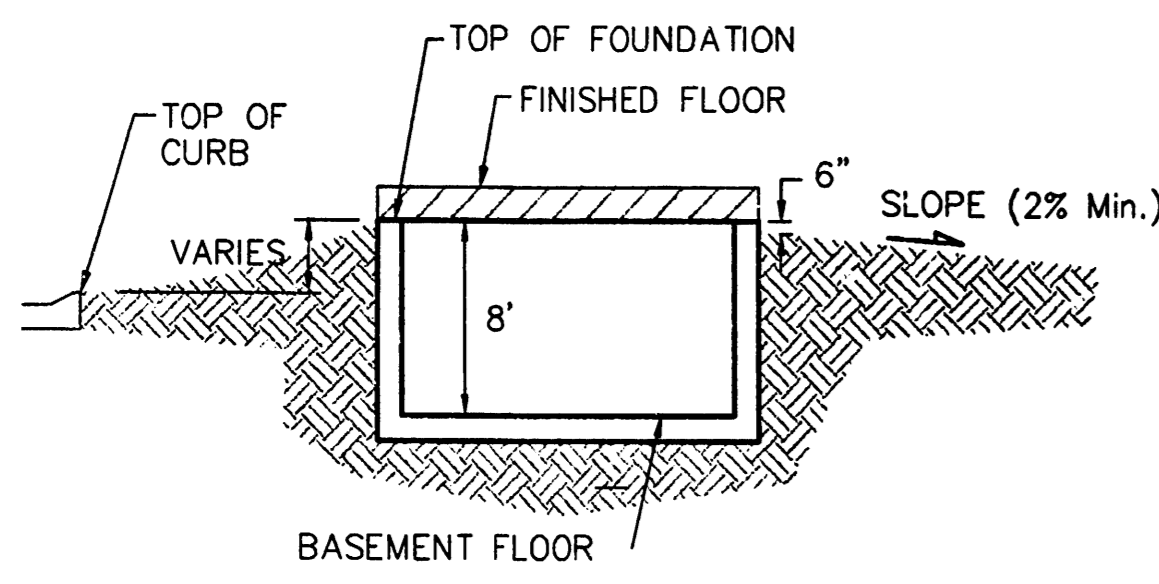
PROJECT NUMBER: _____ DESIGN: _____ DRAWN: _____

REVISIONS: _____ APPROVED: _____ DATE: 11/22/06

SCALE: 1" = 60'
 SHEET: **1 OF 6**

E:\Credat\Auburn Hills 16th\grade.dwg

BENCHMARKS:
 BM #1: "C" Cut on Top of Curb at West Line of Lot 7, Block A, Auburn Hills 5th Addition. Elev. = 207.73 (City Datum)
 BM #2: Disc in Back of Curb, North of Front Corner Common to Lots 23 and 24, Block D, Auburn Hills 12th Addition. Elev. = 191.84 (City Datum)
 BM #3: "C" Cut in Middle of Curb Inlet Top Adjacent to the South Corner of Lot 15, Block B, Auburn Hills 12th Addition. Elev. = 196.44 (City Datum)



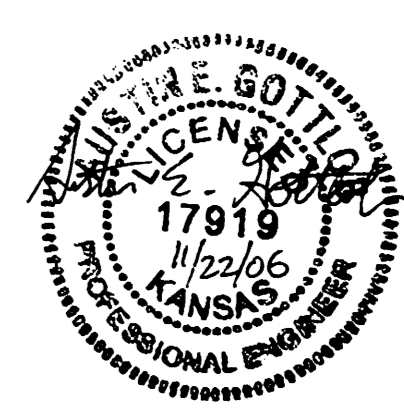
- NOTES:**
1. PROPOSED TOP OF FOUNDATION ELEVATIONS ARE SHOWN ON PLANS. CONTRACTOR TO SET FINISHED FLOOR AND GARAGE FLOOR ELEVATIONS. ALL STREET ELEVATIONS SHOWN ON PLANS ARE FOR TOP OF CURB (FULL-HEIGHT).
 2. THIS GRADING PLAN IS DESIGNED WITH VIEW-OUTS AND WALK-OUTS. ELEVATIONS SHOWN AS XXX.YO DEPICT VIEW-OUT STRUCTURES. ELEVATIONS SHOWN AS XXX.YO DEPICT WALK-OUT STRUCTURES.
 3. ALL LOTS SHALL MEET MINIMUM PAD REQUIREMENT AS SHOWN ON THE RECORDED PLAT.

MINIMUM BUILDING PAD ELEVATIONS FOR LOWEST OPENING TO THE STRUCTURES			
LOT	BLOCK	ELEVATION	
		CITY DATUM	NGVD29
1-4	A	206.5	1383.9
15-17	A	206.5	1383.9
24-29	A	206.5	1383.9
70-76	A	202.3	1389.7
13-17	E	196.0	1383.4
24-31	E	196.0	1383.4
1-8	C	195.9	1383.3

4. LOT DIMENSIONS HAVE BEEN OMITTED ON THIS PLAN. REFER TO THE RECORDED PLAT FOR FINAL DIMENSION, EASEMENT, & BUILDING SETBACK INFORMATION.
5. HOUSE PAD ELEVATIONS DEPICTED WITH BOLD OUTLINES AND NOTED WITH THIS SYMBOL ● INDICATE THAT DEEP FOOTINGS OR DEEP FOUNDATIONS MAY BE REQUIRED.
6. A DRAINAGE PLAN HAS BEEN DEVELOPED FOR THIS SUBDIVISION AND IS ON FILE WITH THE CITY OF WICHITA, KANSAS. DRAINAGE INTENT SHALL REMAIN AS DEPICTED OR AS MODIFIED WITH THE APPROVAL OF THE CITY ENGINEER OF THE CITY OF WICHITA, KANSAS. NO OBSTRUCTIONS WHICH IMPED THE FLOW OF THIS DRAINAGE PLAN SHALL BE ALLOWED.
7. ALL ELEVATIONS SHOWN ARE IN CITY OF WICHITA DATUM

PRELIMINARY GRADING FOR FUTURE PHASES

APPROVED DRAINAGE PLAN



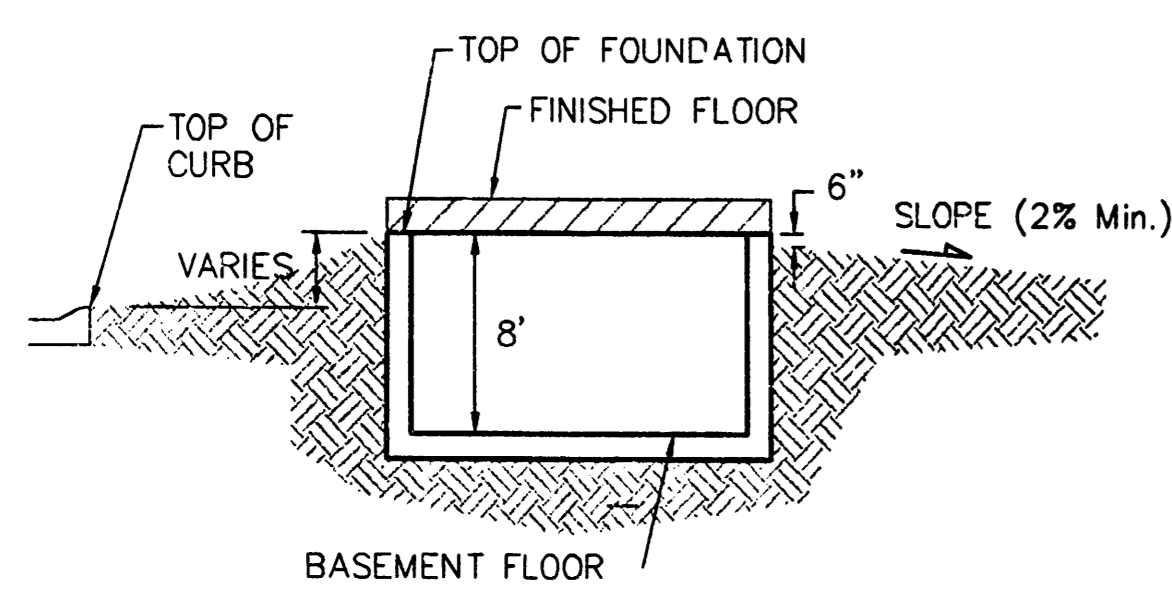
Baughman Auburn Hills 16th
Grading Plan
 Wichita, Sedgwick County, Kansas

Baughman Company, P.A. 315 East St. Wichita, KS 67211 P 316-262-7271 F 316-262-0119
 ENGINEERING | SURVEYING | PLANNING | LANDSCAPE ARCHITECTURE

PROJECT NUMBER	DESIGN	DRAWN
REVISIONS:	APPROVED	DATE
		11/22/06

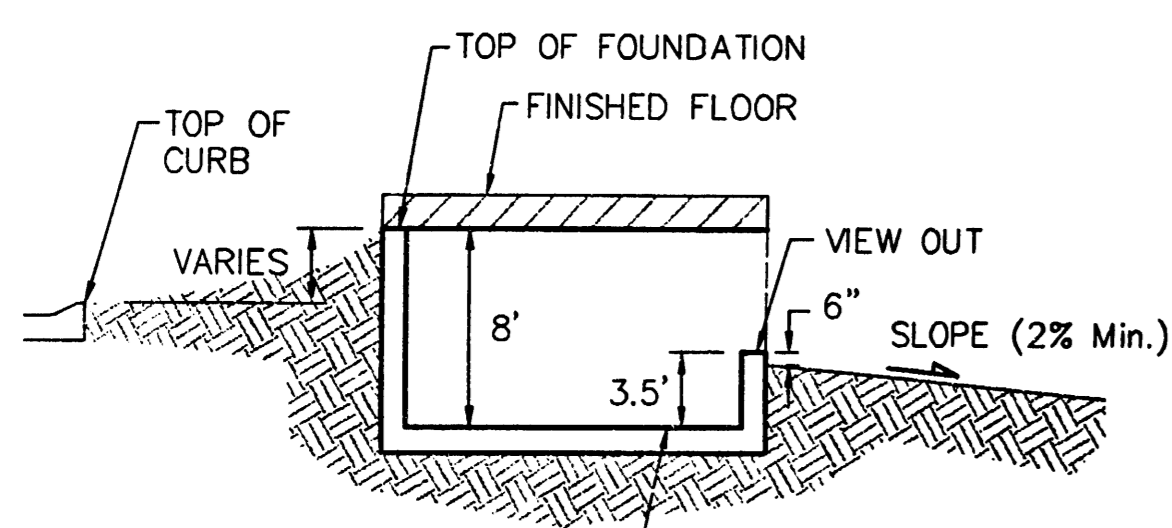
SCALE: 1" = 60'
 SHEET: **2 OF 6**

BENCHMARKS:
 BM #1: "C" Cut on Top of Curb at West Line of Lot 7, Block A, Auburn Hills 5th Addition. Elev. = 207.73 (City Datum)
 BM #2: Disc in Back of Curb, North of Front Corner Common to Lots 23 and 24, Block D, Auburn Hills 12th Addition. Elev. = 191.84 (City Datum)
 BM #3: "C" Cut in Middle of Curb Inlet Top Adjacent to the South Corner of Lot 15, Block B. Elev. = 196.44 (City Datum)



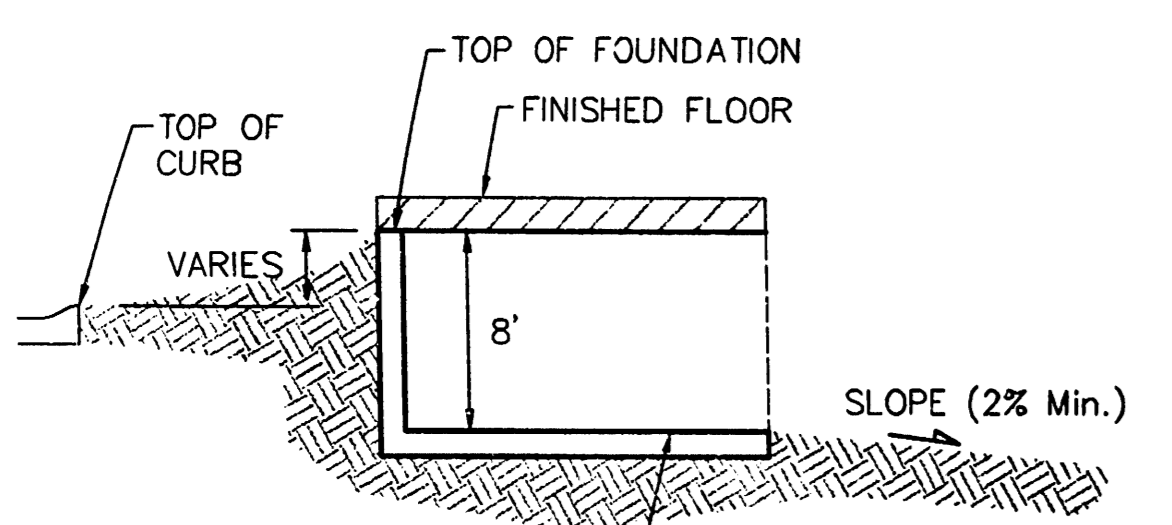
TYPICAL NON-VIEW OUT DETAIL

NO SCALE



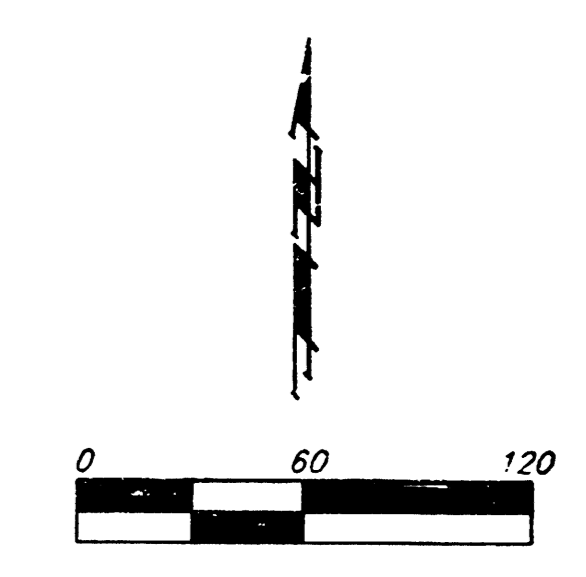
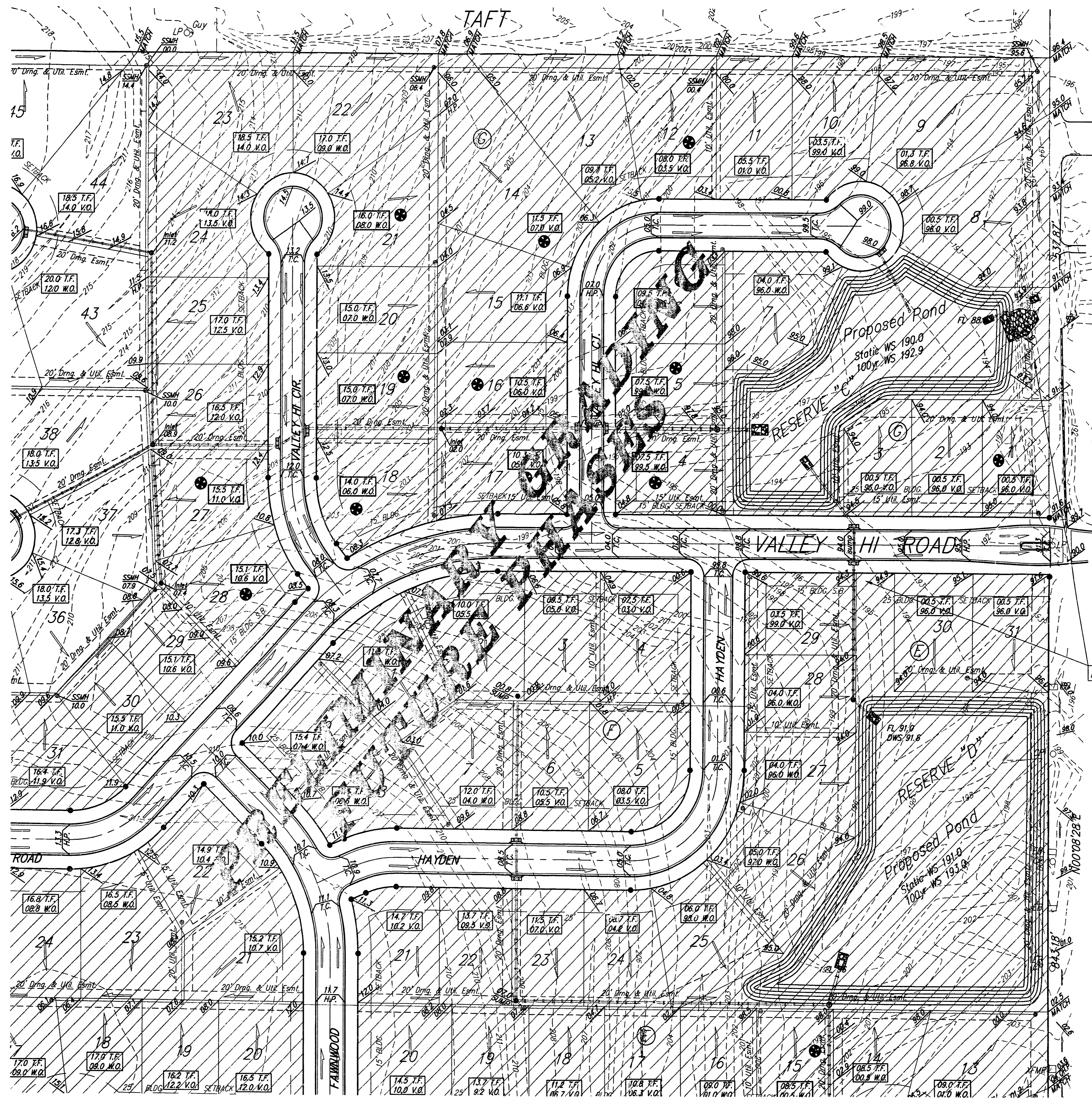
TYPICAL VIEW OUT DETAIL

NO SCALE



TYPICAL WALK OUT DETAIL

NO SCALE



NOTES:

- PROPOSED TOP OF FOUNDATION ELEVATIONS ARE SHOWN ON PLANS. CONTRACTOR TO SET FINISHED FLOOR AND GARAGE FLOOR ELEVATIONS. ALL STREET ELEVATIONS SHOWN ON PLANS ARE FOR TOP OF CURB (FULL-HEIGHT).
- THIS GRADING PLAN IS DESIGNED WITH VIEW-OUTS AND WALK-OUTS. ELEVATIONS SHOWN AS XXX.X V.O. DEPICT VIEW-OUT STRUCTURES. ELEVATIONS SHOWN AS XXX.X V.O. DEPICT WALK-OUT STRUCTURES.
- ALL LOTS SHALL MEET MINIMUM PAD REQUIREMENT AS SHOWN ON THE RECORDED PLAT.

LOT	BLOCK	MINIMUM BUILDING PAD ELEVATIONS FOR LOWEST OPENING TO THE STRUCTURES	
		CITY DATUM	NGVD29
1-4	A	206.5	139.9
15-17	A	206.5	139.9
24-29	A	206.5	139.9
70-76	A	202.3	1389.7
13-17	E	196.0	1383.4
24-31	E	196.0	1383.4
1-8	G	195.9	1383.3

- LOT DIMENSIONS HAVE BEEN OMITTED ON THIS PLAN. REFER TO THE RECORDED PLAT FOR FINAL DIMENSION, EASEMENT, & BUILDING SETBACK INFORMATION.
- HOUSE PAD ELEVATIONS DEPICTED WITH BOLD OUTLINES AND NOTED WITH THIS SYMBOL INDICATE THAT DEEP FOOTINGS OR DEEP FOUNDATIONS MAY BE REQUIRED.
- A DRAINAGE PLAN HAS BEEN DEVELOPED FOR THIS SUBDIVISION AND IS ON FILE WITH THE CITY OF WICHITA, KANSAS. DRAINAGE INTENT SHALL REMAIN AS DEPICTED OR AS MODIFIED WITH THE APPROVAL OF THE CITY ENGINEER OF THE CITY OF WICHITA, KANSAS. NO OBSTRUCTIONS WHICH IMPEDE THE FLOW OF THIS DRAINAGE PLAN SHALL BE ALLOWED.
- ALL ELEVATIONS SHOWN ARE IN CITY OF WICHITA DATUM.

PRELIMINARY GRADING FOR FUTURE PHASES

Submitted
 11/22/06
APPROVED
DRAINAGE PLAN

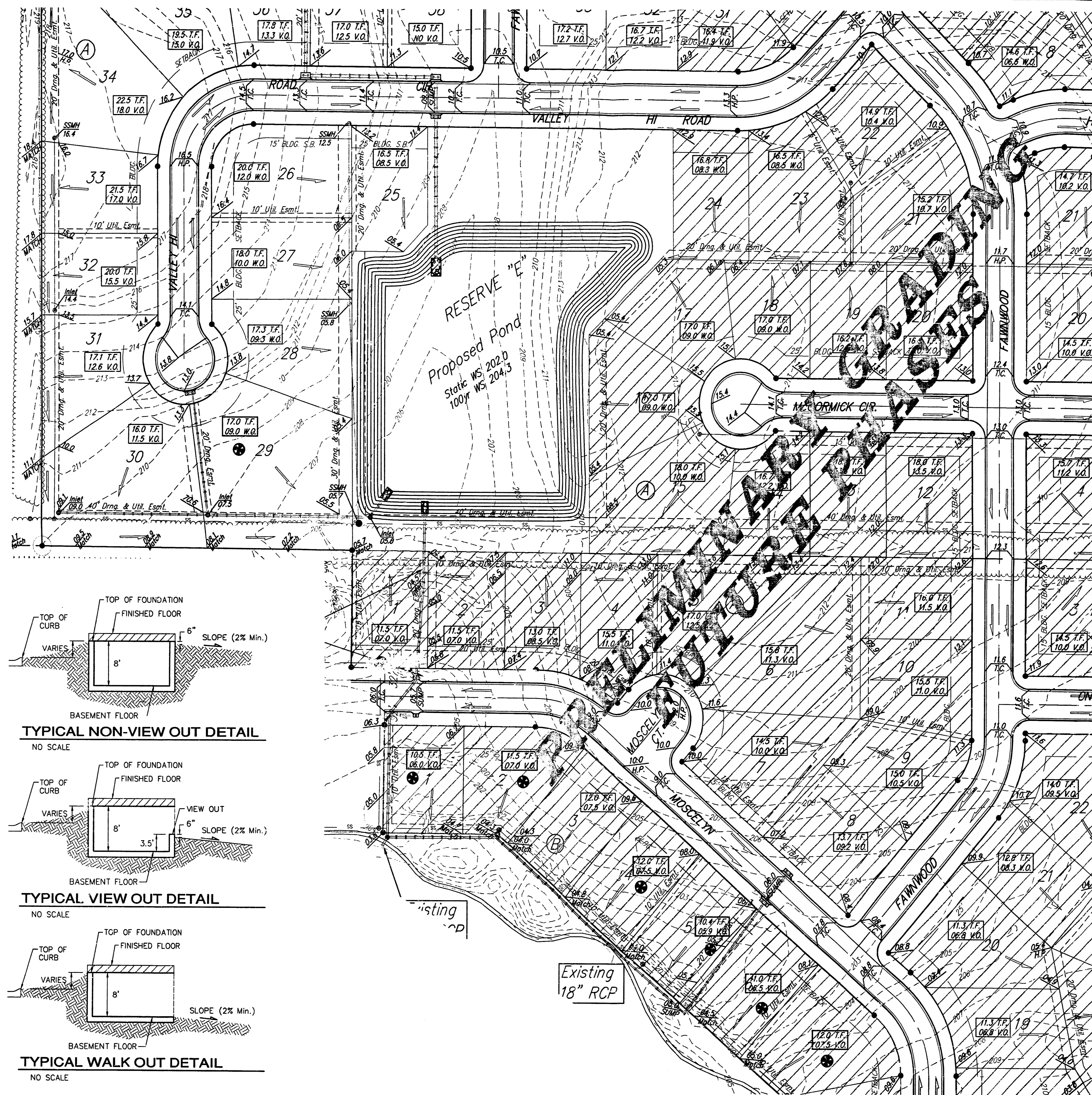
Baughman Grading Plan
 Auburn Hills 16th
 Wichita, Sedgwick County, Kansas

Baughman Company, P.A. 315 Elm St. Wichita, KS 67211 P 316-263-7771 F 316-262-0149
 ENGINEERING | SURVEYING | PLANNING | LANDSCAPE ARCHITECTURE

PROJECT NUMBER	DESIGN	DRAWN
REVISIONS:	APPROVED	DATE
	SCALE	1" = 60'
	SHEET	3 OF 6

E:\Grade\Auburn Hills 16th\grade.dwg

BENCHMARKS:
 BM #1: "C" Cut on Top of Curb at West Line of Lot 7, Block A, Auburn Hills 5th Addition. Elev. = 207.73 (City Datum)
 BM #2: Disc in Back of Curb, North of Front Corner Common to Lots 23 and 24, Block D, Auburn Hills 12th Addition. Elev. = 191.84 (City Datum)
 BM #3: "C" Cut in Middle of Curb Inlet Top Adjacent to the South Corner of Lot 15, Block B. Elev. = 196.44 (City Datum)



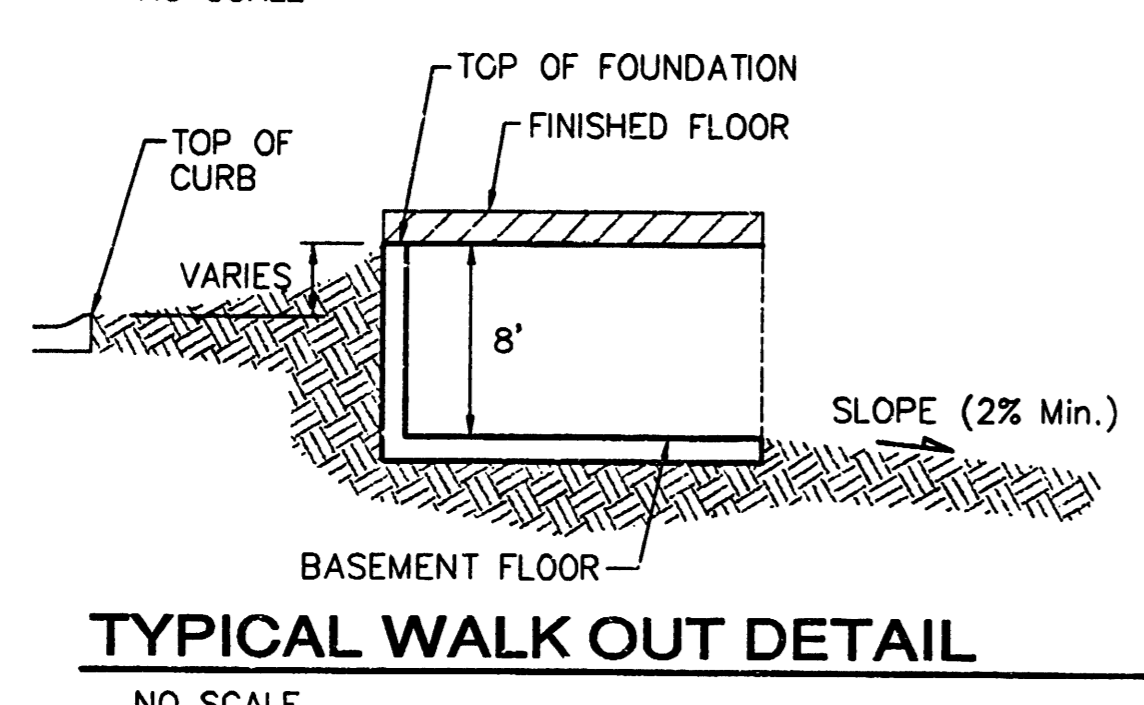
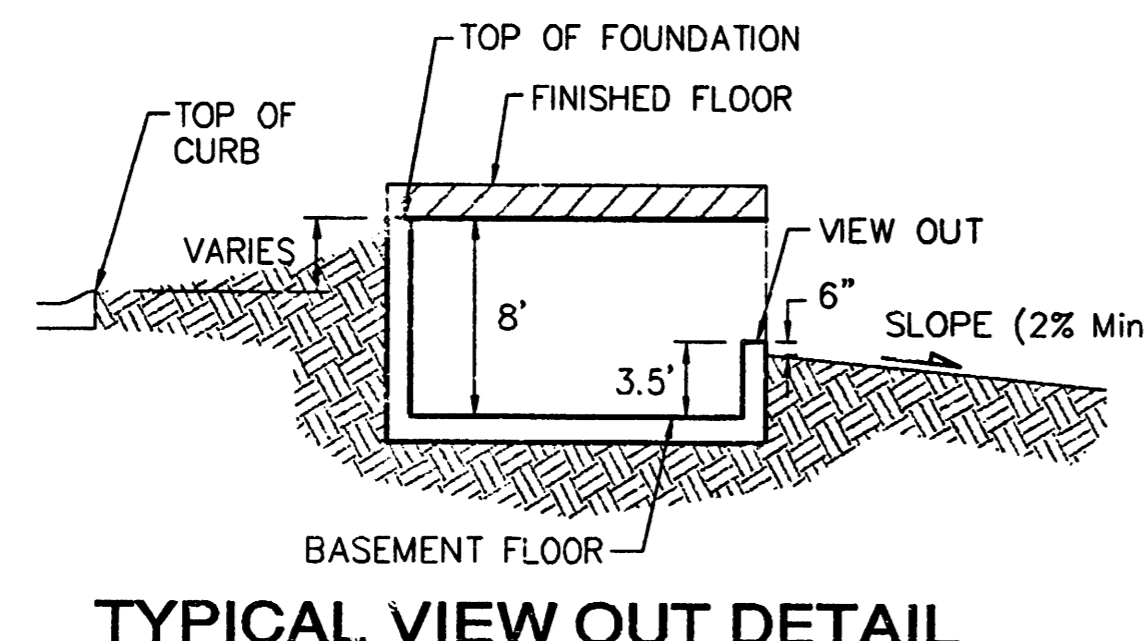
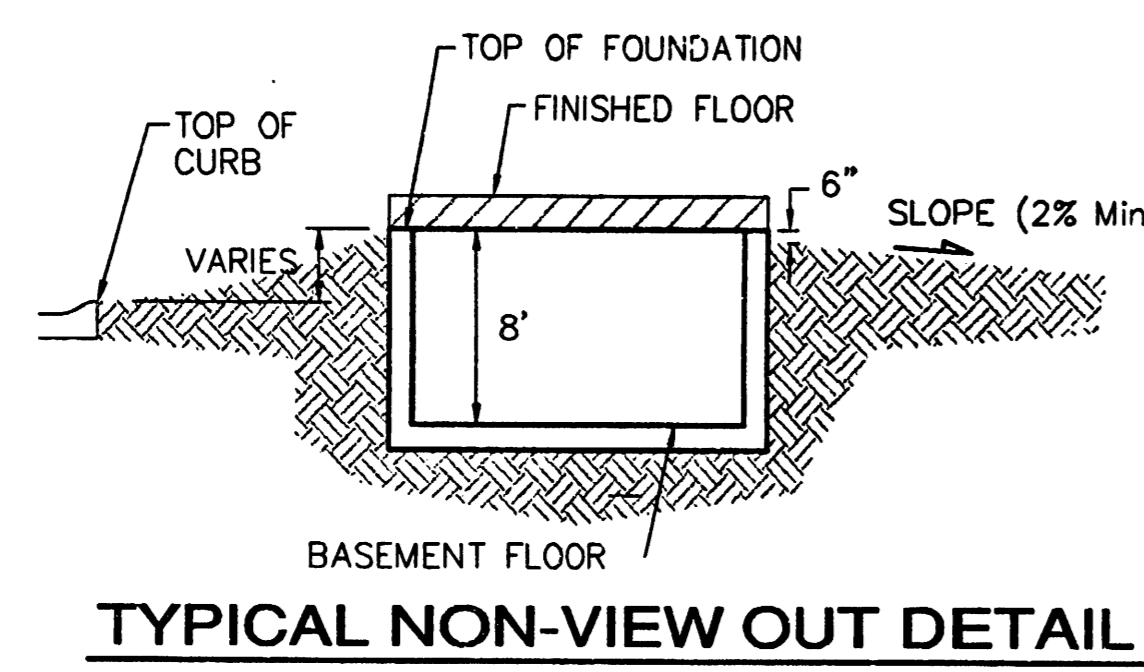
NOTES:

1. PROPOSED TOP OF FOUNDATION ELEVATIONS ARE SHOWN ON PLANS. CONTRACTOR TO SET FINISHED FLOOR AND GARAGE FLOOR ELEVATIONS. ALL STREET ELEVATIONS SHOWN ON PLANS ARE FOR TOP OF CURB (FULL-HEIGHT).
2. THIS GRADING PLAN IS DESIGNED WITH VIEW-OUTS AND WALK-OUTS. ELEVATIONS SHOWN AS XXX.X V.O. DEPICT VIEW-OUT STRUCTURES. ELEVATIONS SHOWN AS XXX.X W.O. DEPICT WALK-OUT STRUCTURES.
3. ALL LOTS SHALL MEET MINIMUM PAD REQUIREMENT AS SHOWN ON THE RECORDED PLAT.

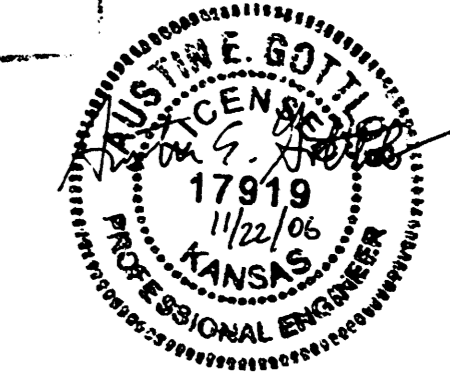
LOT	BLOCK	MINIMUM BUILDING PAD ELEVATIONS FOR LOWEST OPENING TO THE STRUCTURES	
		CITY DATUM	NGVD29
1-4	A	206.5	130.1.9
15-17	A	206.5	130.1.9
24-29	A	206.5	130.1.9
70-76	A	202.3	130.8.7
13-17	E	196.0	130.1.4
24-31	E	196.0	130.1.4
1-8	G	195.9	130.1.3

4. LOT DIMENSIONS HAVE BEEN OMITTED ON THIS PLAN. REFER TO THE RECORDED PLAT FOR FINAL DIMENSION, EASEMENT, & BUILDING SETBACK INFORMATION.
5. HOUSE PAD ELEVATIONS DEPICTED WITH BOLD OUTLINES AND NOTED WITH THIS SYMBOL INDICATE THAT DEEP FOOTINGS OR DEEP FOUNDATIONS MAY BE REQUIRED.
6. A DRAINAGE PLAN HAS BEEN DEVELOPED FOR THIS SUBDIVISION AND IS ON FILE WITH THE CITY OF WICHITA, KANSAS. DRAINAGE INTENT SHALL REMAIN AS DEPICTED OR AS MODIFIED WITH THE APPROVAL OF THE CITY ENGINEER OF THE CITY OF WICHITA, KANSAS. NO OBSTRUCTIONS WHICH IMPEDE THE FLOW OF THIS DRAINAGE PLAN SHALL BE ALLOWED.
7. ALL ELEVATIONS SHOWN ARE IN CITY OF WICHITA DATUM.

PRELIMINARY GRADING FOR FUTURE PHASES



APPROVED
DRAINAGE PLAN

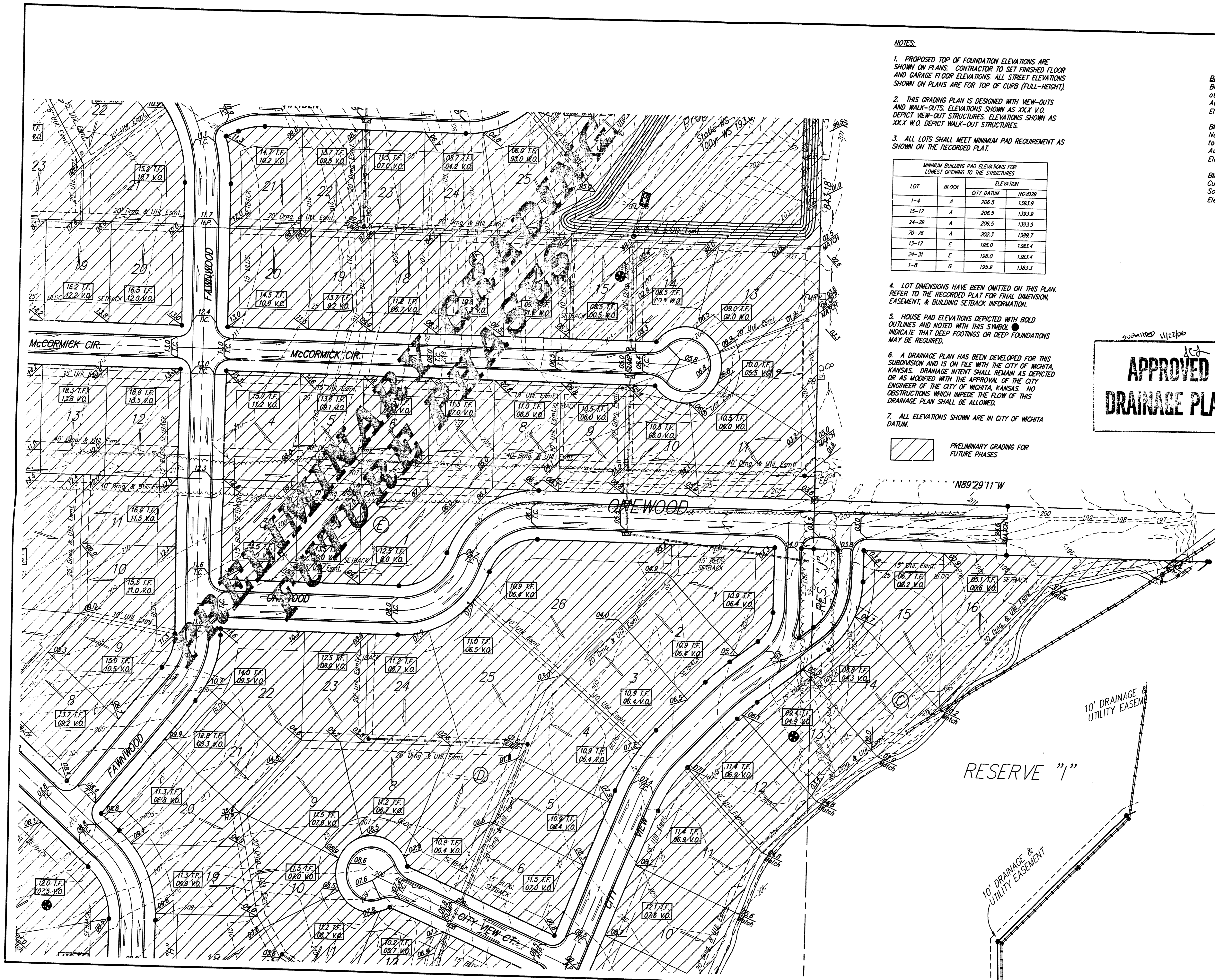


Baughman Auburn Hills 16th
Grading Plan
 Wichita, Sedgwick County, Kansas

Baughman Company, P.A. 315 Elm & Wichita, KS 67211 P 316-263-3721 F 316-263-0199
 ENGINEERING | SURVEYING | PLANNING | LANDSCAPE ARCHITECTURE

PROJECT NUMBER	DESIGN	DRAWN
REVISIONS	APPROVED	DATE
	SCALE	1" = 60'
	SHEET	4 OF 6

E:\Grade\Auburn Hills 16th\grades.dwg



- NOTES:**
1. PROPOSED TOP OF FOUNDATION ELEVATIONS ARE SHOWN ON PLANS. CONTRACTOR TO SET FINISHED FLOOR AND GARAGE FLOOR ELEVATIONS. ALL STREET ELEVATIONS SHOWN ON PLANS ARE FOR TOP OF CURB (FULL-HEIGHT).
 2. THIS GRADING PLAN IS DESIGNED WITH VIEW-OUTS AND WALK-OUTS. ELEVATIONS SHOWN AS XX.X V.O. DEPICT VIEW-OUT STRUCTURES. ELEVATIONS SHOWN AS XX.X W.O. DEPICT WALK-OUT STRUCTURES.
 3. ALL LOTS SHALL MEET MINIMUM PAD REQUIREMENT AS SHOWN ON THE RECORDED PLAT.

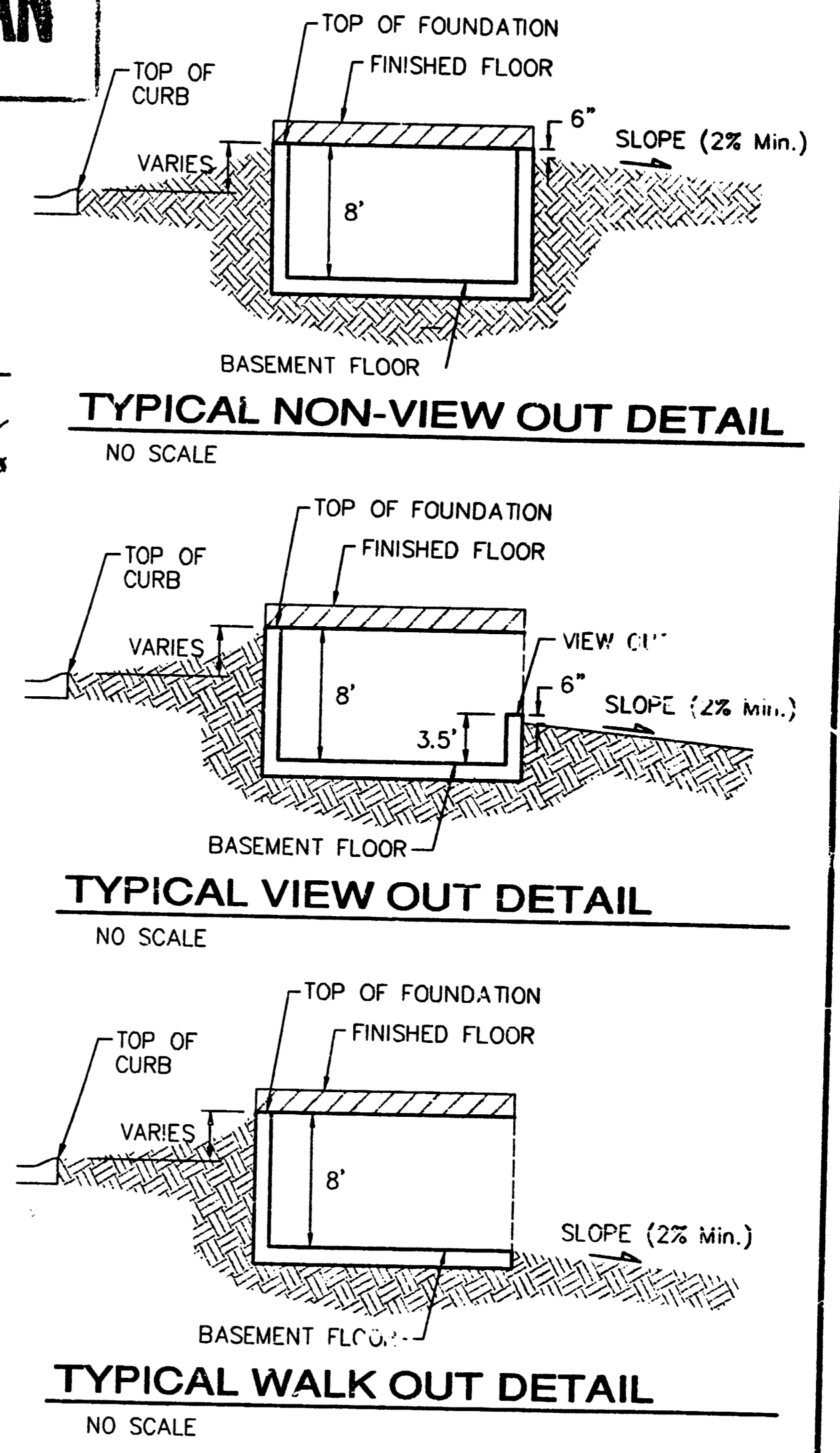
MINIMUM BUILDING PAD ELEVATIONS FOR LOWEST OPENING TO THE STRUCTURES			
LOT	BLOCK	ELEVATION	
		CITY DATUM	NGVD29
1-4	A	206.5	1383.8
15-17	A	206.5	1383.9
24-29	A	206.5	1383.9
70-76	A	202.3	1388.7
13-17	E	196.0	1383.4
24-31	E	196.0	1383.4
1-8	G	195.9	1383.3

4. LOT DIMENSIONS HAVE BEEN OMITTED ON THIS PLAN. REFER TO THE RECORDED PLAT FOR FINAL DIMENSION, EASEMENT, & BUILDING SETBACK INFORMATION.
5. HOUSE PAD ELEVATIONS DEPICTED WITH BOLD OUTLINES AND NOTED WITH THIS SYMBOL INDICATE THAT DEEP FOOTINGS OR DEEP FOUNDATIONS MAY BE REQUIRED.
6. A DRAINAGE PLAN HAS BEEN DEVELOPED FOR THIS SUBDIVISION AND IS ON FILE WITH THE CITY OF WICHITA, KANSAS. DRAINAGE INTENT SHALL REMAIN AS DEPICTED OR AS MODIFIED WITH THE APPROVAL OF THE CITY ENGINEER OF THE CITY OF WICHITA, KANSAS. NO OBSTRUCTIONS WHICH IMPEDE THE FLOW OF THIS DRAINAGE PLAN SHALL BE ALLOWED.
7. ALL ELEVATIONS SHOWN ARE IN CITY OF WICHITA DATUM.

PRELIMINARY GRADING FOR FUTURE PHASES

**APPROVED
DRAINAGE PLAN**

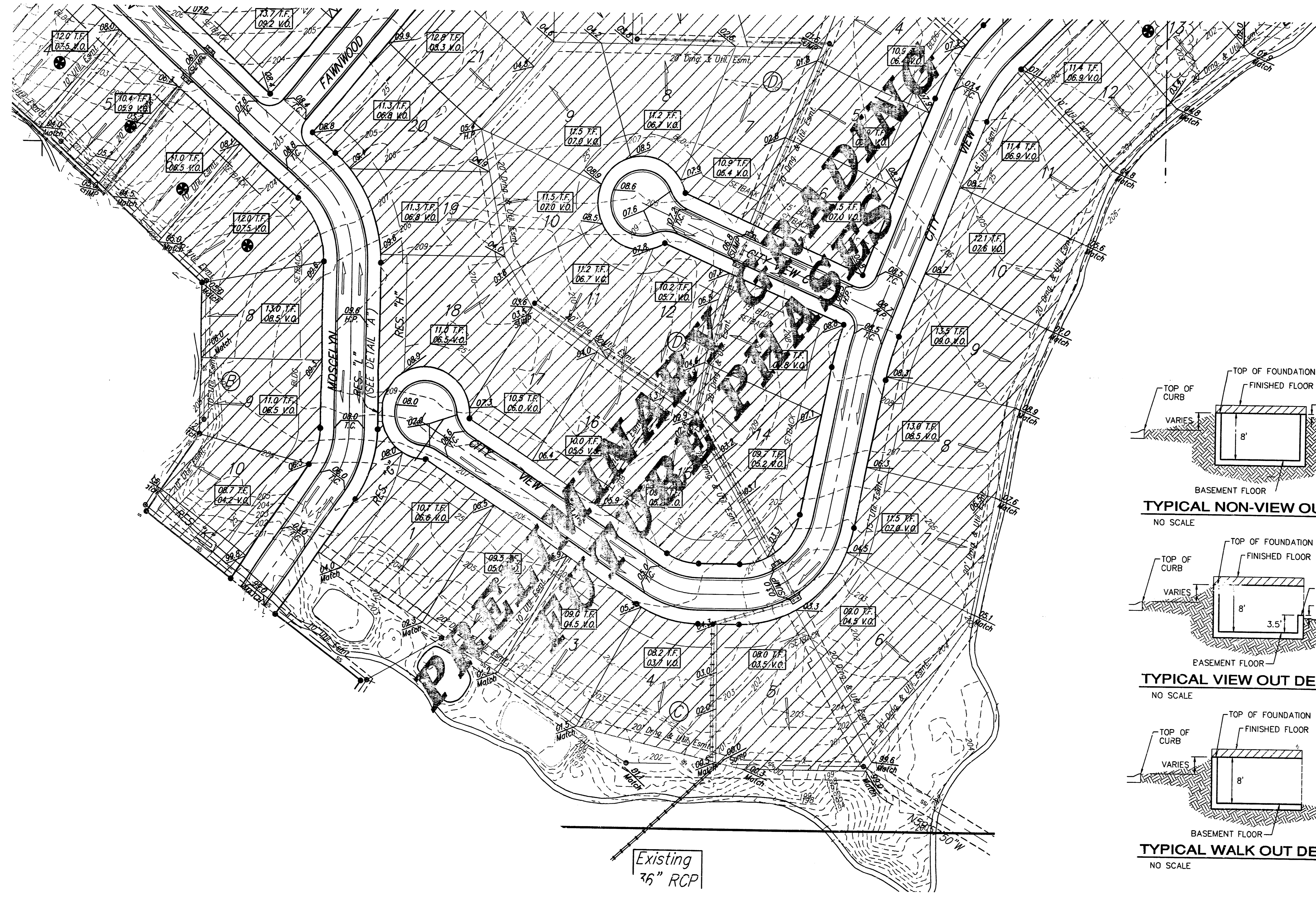
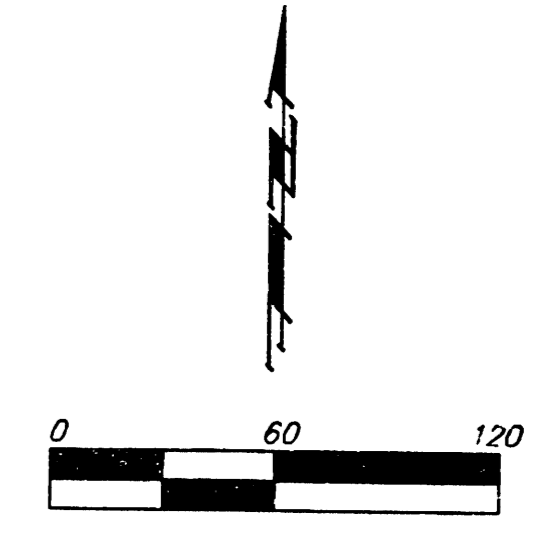
BENCHMARKS:
 BM #1: "C" Cut on Top of Curb at West Line of Lot 7, Block A, Auburn Hills 5th Addition. Elev. = 207.73 (City Datum)
 BM #2: Disc in Back of Curb, North of Front Corner Common to Lots 23 and 24, Block D, Auburn Hills 12th Addition. Elev. = 191.84 (City Datum)
 BM #3: "C" Cut in Middle of Curb Inlet Top Adjacent to the South Corner of L. 5, Block B, Auburn Hills 12th Addition. Elev. = 196.44 (City Datum)



		Auburn Hills 16th Grading Plan Wichita, Sedgewick County, Kansas	
Baughman Company, P.A. 315 Ellis St. Wichita, KS 67211 P.316.263.7771 F.316.262.0149 ENGINEERING SURVEYING PLANNING LANDSCAPE ARCHITECTURE			
PROJECT NUMBER	DESIGN	DRAWN	
REVISIONS:	APPROVED	DATE	11/22/06
	SCALE		1" = 60'
	SHEET		5 OF 6

E:\Grade\Auburn Hills 16th\grade.dwg

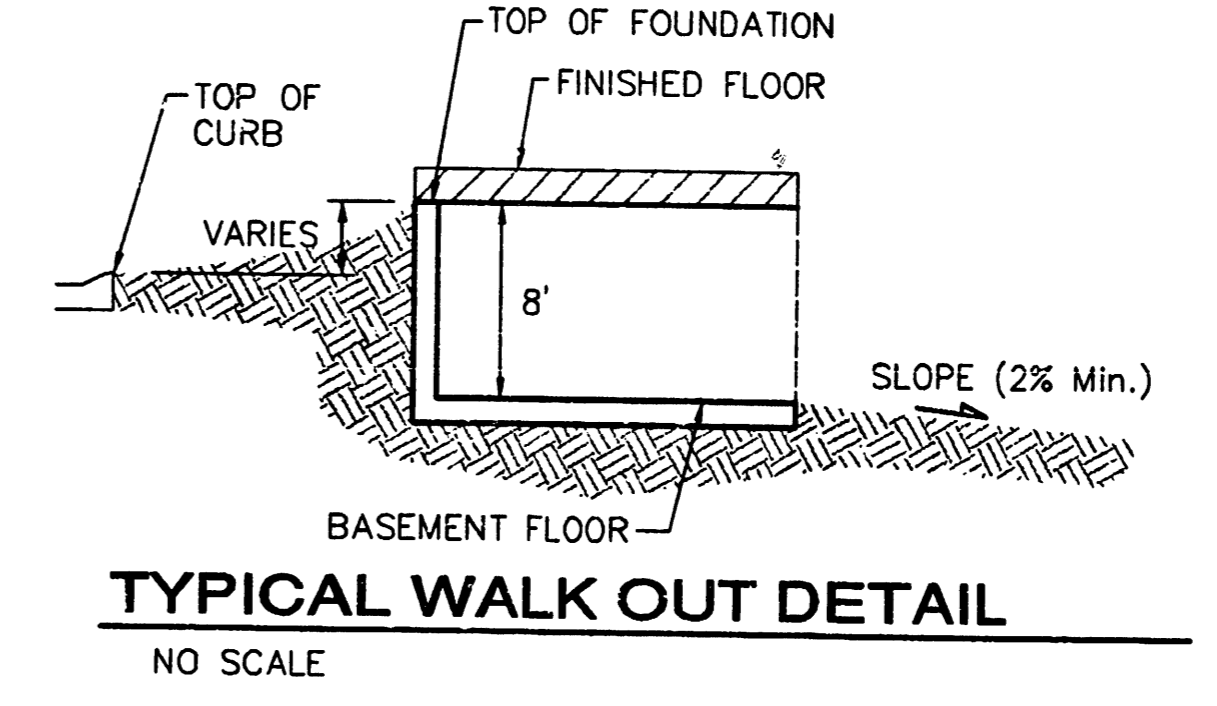
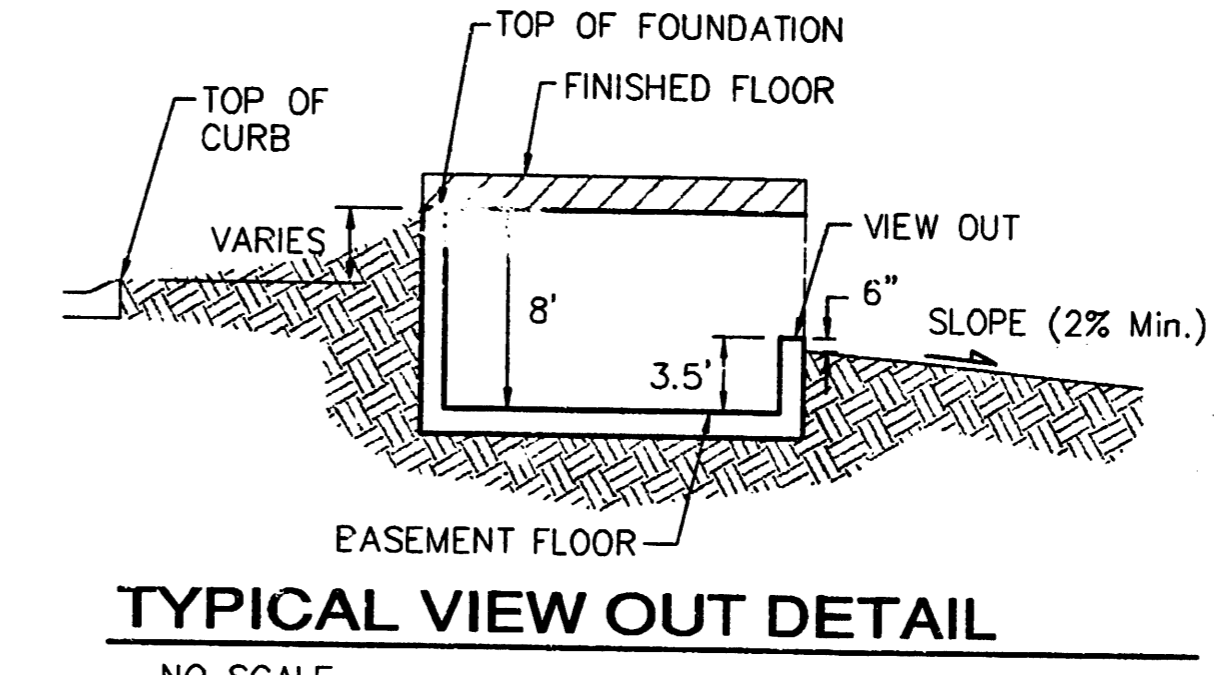
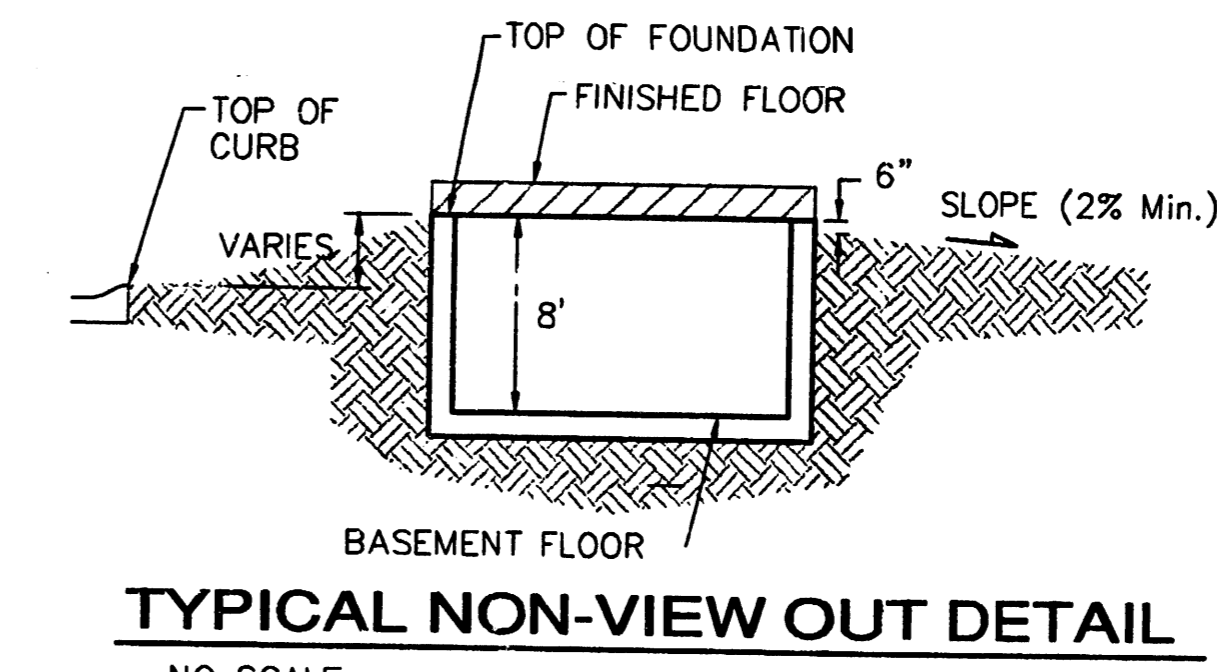
BENCHMARKS:
 BM #1: "x" Cut on Top of Curb at West Line of Lot 7, Block A, Auburn Hills 5th Addition. Elev. = 207.73 (City Datum)
 BM #2: Disc in Back of Curb, North of Front Corner Common to Lots 23 and 24, Block D, Auburn Hills 12th Addition. Elev. = 191.84 (City Datum)
 BM #3: "x" Cut in Middle of Curb Inlet Top Adjacent to the South Corner of Lot 15, Block B. Elev. = 196.44 (City Datum)



- NOTES:**
1. PROPOSED TOP OF FOUNDATION ELEVATIONS ARE SHOWN ON PLANS. CONTRACTOR TO SET FINISHED FLOOR AND GARAGE FLOOR ELEVATIONS. ALL STREET ELEVATIONS SHOWN ON PLANS ARE FOR TOP OF CURB (FULL-HEIGHT).
 2. THIS GRADING PLAN IS DESIGNED WITH VIEW-OUTS AND WALK-OUTS. ELEVATIONS SHOWN AS XX.X V.O. DEPICT VIEW-OUT STRUCTURES. ELEVATIONS SHOWN AS XX.X V.O. DEPICT WALK-OUT STRUCTURES.
 3. ALL LOTS SHALL MEET MINIMUM PAD REQUIREMENT AS SHOWN ON THE RECORDED PLAT.

LOT	BLOCK	ELEVATION	
		CITY DATUM	NGVD29
1-4	A	206.5	1,393.9
15-17	A	206.5	1,393.9
24-29	A	206.5	1,393.9
70-76	A	202.3	1,389.7
15-17	E	196.0	1,383.4
24-31	E	196.0	1,383.4
1-8	G	195.9	1,383.3

4. LOT DIMENSIONS HAVE BEEN OMITTED ON THIS PLAN. REFER TO THE RECORDED PLAT FOR FINAL DIMENSION, EASEMENT, & BUILDING SETBACK INFORMATION.
5. HOUSE PAD ELEVATIONS DEPICTED WITH BOLD OUTLINES AND NOTED WITH THIS SYMBOL INDICATE THAT DEEP FOOTINGS OR DEEP FOUNDATIONS MAY BE REQUIRED.
6. A DRAINAGE PLAN HAS BEEN DEVELOPED FOR THIS SUBDIVISION AND IS ON FILE WITH THE CITY OF WICHITA, KANSAS. DRAINAGE INTENT SHALL REMAIN AS DEPICTED OR AS MODIFIED WITH THE APPROVAL OF THE CITY ENGINEER OF THE CITY OF WICHITA, KANSAS. NO OBSTRUCTIONS WHICH IMPEDE THE FLOW OF THIS DRAINAGE PLAN SHALL BE ALLOWED.
7. ALL ELEVATIONS SHOWN ARE IN CITY OF WICHITA DATUM.



PRELIMINARY GRADING FOR FUTURE PHASES

APPROVED
DRAINAGE PLAN

		Auburn Hills 16th Grading Plan Wichita, Sedgewick County, Kansas	
Baughman Company, P.A. 315 8th St. Wichita, KS 67111 P 316-262-2271 F 316-232-0149 ENGINEERING SURVEYING PLANNING LANDSCAPE ARCHITECTURE			
PROJECT NUMBER:	DESIGN	DATE:	DRAWN
REVISIONS:	APPROVED	DATE:	11/22/06
	SCALE:	1" = 60'	
	SHEET:	6 OF 6	
E:\Grade\Auburn Hills 16th\grade.dwg			