

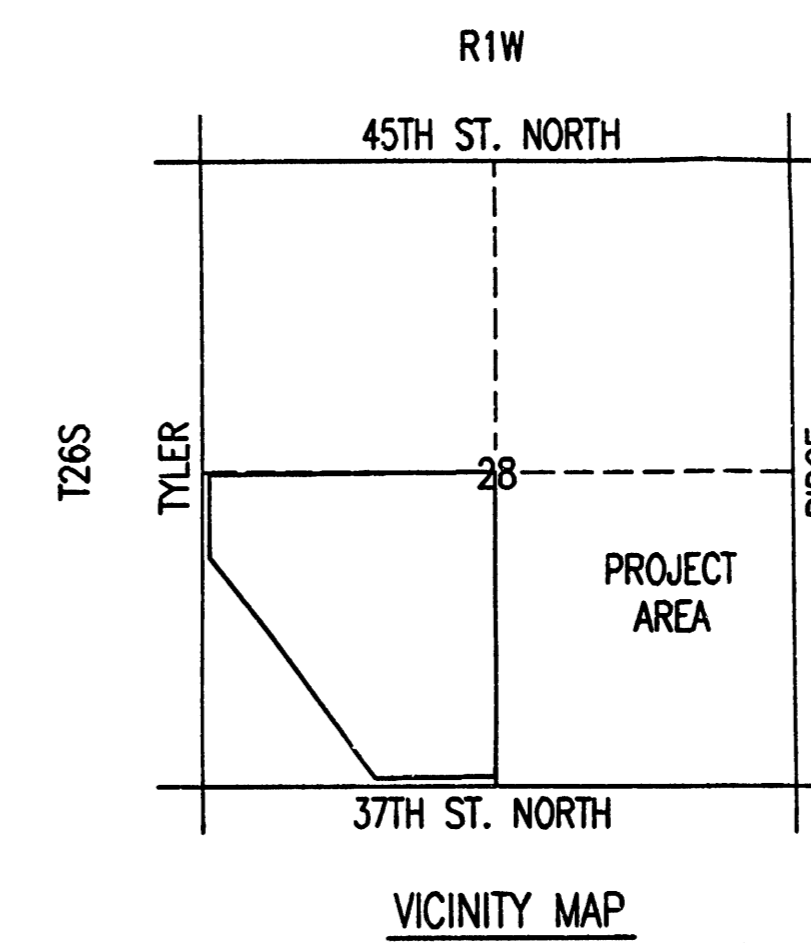
FOUR CORNER PLAN FOR
AVALON PARK
 AN ADDITION TO WICHITA
 SEDGWICK COUNTY, KANSAS

SCALE: 1" = 100'
 • = 3/4" IRON PIPE W/PEC CAP UNLESS OTHERWISE NOTED

LEGEND

- (X) STD. BASEMENT
- (W.O.) WALK-OUT BASEMENT
- (V.O.) VIEW-OUT BASEMENT
- STORM WATER FLOW
- SPOT ELEVATION
- W.O. WALK-OUT
- V.O. VIEW-OUT
- T.F. TOP OF FOUNDATION

VO OR WO WAS CONSIDERED ACCEPTABLE
 IF THE TOP OF FOUNDATION WAS 5' OR
 LESS ABOVE THE PROPERTY LINE.



BENCHMARKS:

- BM #50 - "T" Post, 1/2 mile E. of Tyler Rd.,
14' N. of N. edge 37th St. N.
Elev.=1333.15 N.G.V.D.
Elev.=145.75 CITY DATUM
- BM #51 - "T" Post, 3/8 mile E. of Tyler Rd.,
14' N. of N. edge 37th St. N.,
E. of R.R. tracks 186±
Elev.=1335.55 N.G.V.D.
Elev.=148.15 CITY DATUM
- BM #58 - Chiseled "a" on S. end concrete headwall,
E. end RCB under Tyler Rd. at 1/2 mile
line, S. of K96 Highway.
Elev.=1342.03 N.G.V.D.
Elev.=154.63 CITY DATUM

MINIMUM OPENINGS

BLOCK	LOTS	ELEVATION (N.G.V.D.)	CITY DATUM
BLOCK 1	LOTS 1-6, 18-19	1336.0	148.6
	LOTS 36-37, 46-52	1349.6	149.6
	LOTS 7-17, 20-22, 33-35	1338.2	150.8
	LOTS 38-45	1338.3	150.9
	LOTS 23, 31-32	1339.0	151.6
BLOCK 2	LOTS 1-4, 10-13	1336.0	148.6
	LOTS 5-9	1336.2	148.8
BLOCK 3	LOTS 1-6	1336.0	148.6
	LOTS 7-18	1349.6	149.6
BLOCK 4	LOTS 4-9, 22-25	1336.0	148.6
	LOTS 1-3, 26-28	1336.8	149.4
	LOTS 10-21	1349.6	149.6

REVISED FEBRUARY 6, 2004

APPROVED
DRAINAGE PLAN

AVALON PARK

No.	Revision	By	Date
AVALON PARK-PHASE 1			
4-CORNER LOT GRADING PLAN (FOR INFORMATION ONLY)			
JAMES L. ARMOUR, P.E.-ACTING CITY ENGINEER CITY OF WICHITA PROJECT NO. 472-63835			
Professional Engineering Consultants, P.A. 303 S. TOPEKA • WICHITA, KANSAS 67202 316-262-2691 • FAX 316-262-3003			
Designed by	BDB, SPL	Job No.	35-03345
Drawn by	BJS	Date	JUNE 2002
			Sht. 29 of 43

DSNR: SAW OPER: SHW SCALE: 1"=100.00
 01:13:20 pm
 01:2003\03\345\000\4CRNR-A.dwg 07-23-2004

