

FOUR CORNER PLAN FOR AVALON PARK 2ND

AN ADDITION TO WICHITA
SEDGWICK COUNTY, KANSAS

SCALE: 1" = 100'

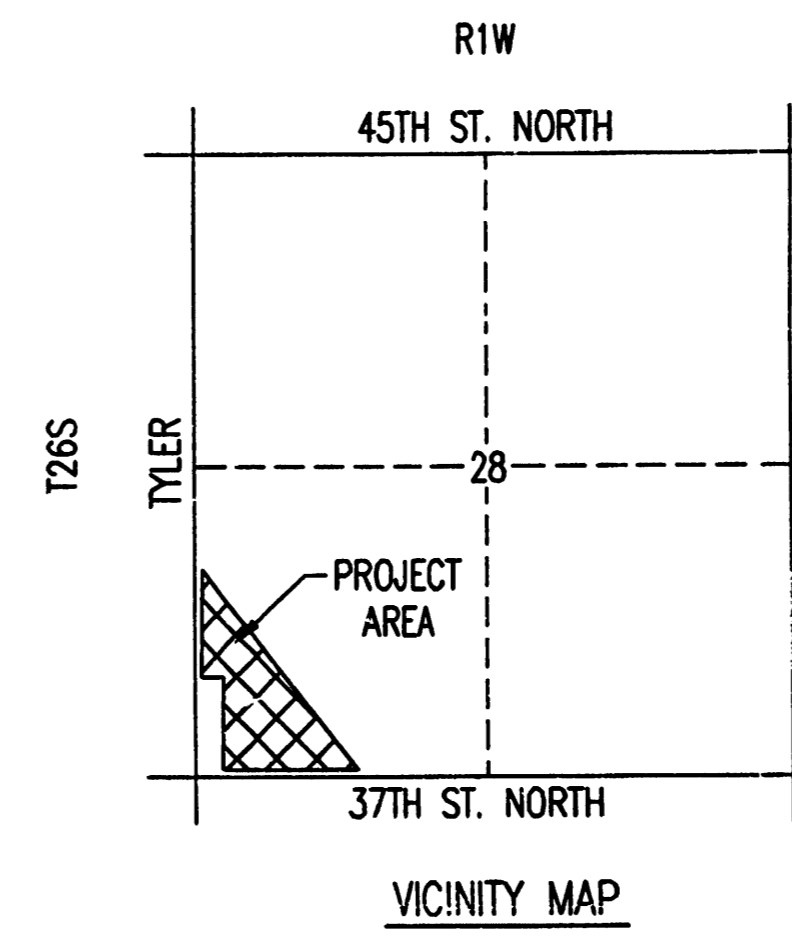
LEGEND

- (X) STD. BASEMENT
- (W.O.) WALK-OUT BASEMENT
- (V.O.) VIEW-OUT BASEMENT
- STORM WATER FLOW
- 158.0 SPOT ELEVATION
- 58.0 MATCH EXISTING ELEVATION
- W.O. WALK-OUT
- V.O. VIEW-OUT
- T.F. TOP OF FOUNDATION

VO OR WO WAS CONSIDERED ACCEPTABLE
IF THE TOP OF FOUNDATION WAS 5' OR
LESS ABOVE THE PROPERTY LINE.

BENCHMARKS:

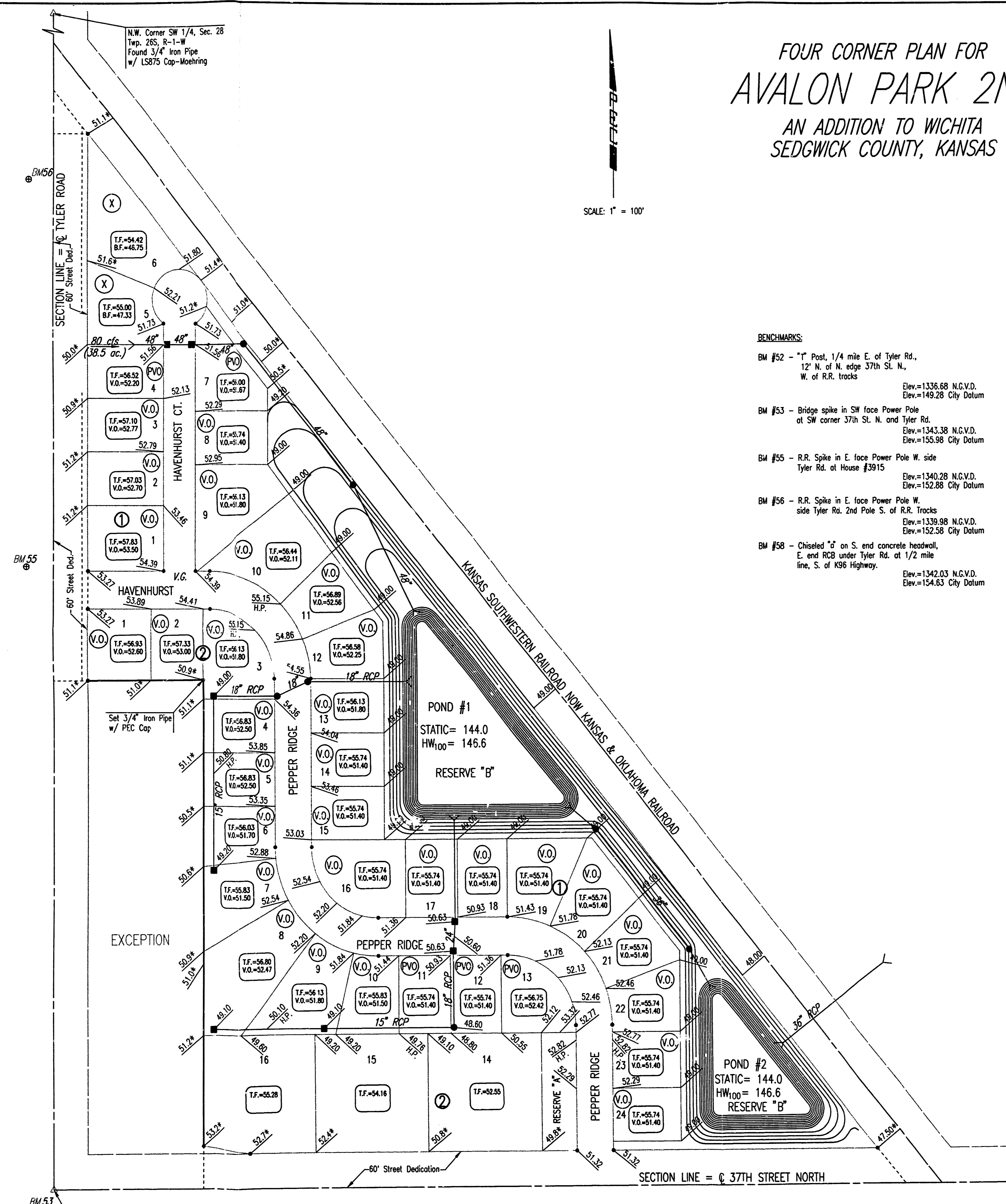
- BM #52 - "T" Post, 1/4 mile E. of Tyler Rd.,
12' N. of N. edge 37th St. N.,
W. of R.R. tracks
Elev.=1336.68 N.G.V.D.
Elev.=149.28 City Datum
- BM #53 - Bridge spike in SW face Power Pole
at SW corner 37th St. N. and Tyler Rd.
Elev.=1343.38 N.G.V.D.
Elev.=155.98 City Datum
- BM #55 - R.R. Spike in E. face Power Pole W. side
Tyler Rd. at House #3915
Elev.=1340.28 N.G.V.D.
Elev.=152.88 City Datum
- BM #56 - R.R. Spike in E. face Power Pole W.
side Tyler Rd. 2nd Pole S. of R.R. Tracks
Elev.=1339.98 N.G.V.D.
Elev.=152.58 City Datum
- BM #58 - Chiseled "J" on S. end concrete headwall,
E. end RCB under Tyler Rd. at 1/2 mile
line, S. of K96 Highway.
Elev.=1342.03 N.G.V.D.
Elev.=154.63 City Datum



MINIMUM OPENINGS

- BLOCK 1
LOTS 1-6
- LOTS 7-24
- BLOCK 2
LOTS 1-16

ELEVATION (N.G.V.D.)	CITY DATUM
1339.0	151.6
1338.8	151.4
1338.8	151.4



Professional Engineering Consultants, P.A.
303 S. TOPEKA • WICHITA, KANSAS 67202
316-262-2691 • FAX 316-262-3003

REVISED OCTOBER 6, 2004

AVALON PARK 2ND

S.E. Corner SW 1/4,
Sec. 28, Twp. 26S, R-1-W
Found 5/8" Rebar

1st REVISION OCT 18 JULY 2005

OSWIC SWK OPER SHW SCALE 1"=100.00'
 CA 2003 163377 ADD 03377 CORNER 07-18-2005 10:02:53 am